

Vibration Monitoring Assessment Report (April 2020)

771 Cudgen Road, Kingscliff NSW

Prepared for: Delta Group

DLT-01-Q1013 / VIB9 / v1.4f
23rd June 2020



ADECONSULTINGGROUP
SOLUTIONS THROUGH INNOVATION



ADE
CONSULTING
GROUP

Prepared for:

Delta Group

Vibration Monitoring Assessment Report

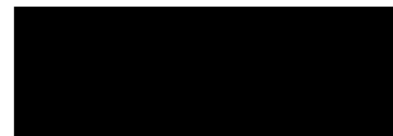
771 Cudgen Road, Kingscliff NSW

Version	Details	Date
v1f	Written by [REDACTED]	8 th May 2020
v1.1f	Revised by [REDACTED]	19 th May 2020
v1.2f	Revised by [REDACTED]	22 nd May 2020
v1.3f	Revised by [REDACTED]	25 th May 2020
V1.4f	Revised by [REDACTED]	23 rd June 2020

Report No: DLT-01-Q1013 / VIB9 / v1.4f

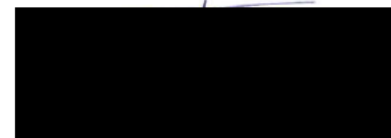
Date: 23rd June 2020

Written By:



BSc. (Ecology & Cons. Bio.)
Occupational Hygienist

Reviewed By:



Principal Occupational Hygienist
B. Industrial Engineering
M. (Ind. Hygiene)

This report is copyright. No part of this publication may be reproduced or transmitted in any form or by any means, electronic or mechanical, including photocopying without permission in writing from ADE

Consulting Group Pty Ltd.



VIBRATION MONITORING ASSESSMENT REPORT
ADE Report No. DLT-01-Q1013 / VIB9 / v1.4f

EXECUTIVE SUMMARY

ADE Consulting Pty Ltd (ADE) has been commissioned by the Delta Group to prepare an assessment of the vibration aspects of the construction phase for Tweed Hospital Valley project located at 771 Cudgen Road, Kingscliff NSW. Kingscliff is located in the Northern Rivers region of New South Wales. The Site is bounded by the Tweed Coast Road to the West, Cudgen Road to the South and Turnock Street to the East.

The Vibration Assessment consisted of the real time data observation and discussion to achieve the following,

- Compliance with regulatory requirements and standards for vibration management;
- Avoid excessive vibration generation through site planning and the adoption of appropriate work methods and practices; and
- Prevent or minimize to the greatest extent, the impact of construction vibration on neighbours and to establish and maintain positive relationships with project stakeholders.

Outcome of the vibration assessment did not identify any health exposures presenting an immediate danger to life, health or environment. The report details the outcome of the real time vibration assessment conducted in April 2020 by ADE Consulting Group Pty Ltd from **1st April to 30th April 2020**.

A value >5mm/s on the 6th April 2020 was recorded at location 001 was due to soil roller-compactator operating approximately 10 metres away from the monitor. Values have exceeded Line 2. As per Table 2 of the NSW Government *Construction Noise and Vibration Guideline (2016)*, a vibratory roller above 18 tonnes has a minimum working distance of 25m for cosmetic damage. The distance between the monitor and the sensitive receiver is 36m. Therefore, the vibration at the receiver would be below lines 1 & 2. All other Results from vibration monitoring undertaken during the monitoring period April 2020 were **below** the threshold used to assess the effects of short-term vibration on structures according to DIN 4150-3.

Works were only conducted between 7am and 6pm, Monday – Friday from the 1st – 30th April and only data within this range should be considered.

TABLE OF CONTENTS

DEFINITIONS	5
1 INTRODUCTION.....	7
1.1 Project Background	7
1.2 Previous Report.....	8
1.3 Monitoring locations	8
1.4 Limits for vibration	9
1.5 Monitoring Frequency.....	10
1.6 Survey Instrumentation and Methodology	10
1.7 Existing Vibration Environment	10
2 RESULTS	11
3 DISCUSSION	15
4 CONCLUSION.....	15
5 REFERENCES	16
APPENDIX I.....	17
AERIAL PHOTOGRAPH OF MONITORING LOCATIONS	17
APPENDIX II.....	19
MONITORING LOCATIONS	19
APPENDIX III.....	23
ADE SITE TIME SUMMARY	23
APPENDIX IV	25
VIBRA TECHNICAL SPECIFICATIONS.....	25

Sydney Office:
ADE Consulting Group Pty Ltd
Unit 6 / 7 Millennium Court
Silverwater, NSW 2128

Melbourne Office:
ADE Consulting Group Pty Ltd
Unit 4 / 95 Salmon Street
Port Melbourne, VIC 3207

Newcastle Office:
ADE Consulting Group Pty Ltd
Unit 9 / 103 Glenwood Drive
Thornton, NSW 2322

Brisbane Office:
ADE Consulting Group Pty Ltd
Unit 3 / 22 Palmer Place
Murarrie QLD 4172

Contact Us:
Site: www.ADE.Group
Email: info@ade.group
Phone: 1300 976 922

DEFINITIONS

Vibration:	The mechanical oscillations occurring about an equilibrium point. The oscillations may be periodic such as the motion of a pendulum or random. Vibration is most commonly expressed in terms of displacement, velocity, acceleration and frequency, all of which are related.
Displacement:	The change in position of an object, is a vector quantity (Stress indicator).
Velocity:	The rate of change of displacement, is a vector quantity (Fatigue indicator).
Acceleration:	The rate of change of velocity, is a vector quantity. (Indicator of force).
Frequency:	The number of times a periodic function or vibration occurs or repeats itself in a specified time, often 1 second – cycles per second. Frequency is measured in Hertz.
Hertz (Hz):	The unit of frequency or pitch of a sound. One hertz equals one cycle per second.
Peak Particle Velocity (PPV):	The greatest instantaneous particle velocity during a given time interval if measurements are made in 3-axis. The resultant Peak Particle Velocity (PPV) is the vector sum i.e. the square root of the summed squares of the maximum velocities, regardless of when in the time history those occur.
Root Mean Square (RMS):	The RMS value of a set of numbers is the square root of the average of their squares. Best used when assessing building damage.
Vibration Dose Value (VDV):	The vibration dose value (VDV) is used for assessing intermittent vibration. A cumulative measurement of the vibration level received over an 8-hour or 16-hour period. Best used when structure is occupied.
Peak:	The peak is the maximum amplitude during a measurement period.
Peak to Peak (P-P):	The peak to peak (P-P) is the difference between the maximum positive and maximum negative amplitudes of a waveform.
Logarithmic Scale:	Comparing frequency with large amplitude differences can be accomplished using a logarithmic scale. Critical vibration components usually occur at low amplitudes compared to the rotational frequency vibration. These components are not revealed on a linear amplitude scale because low amplitudes are compressed at the bottom of the scale. But a logarithmic scale shows prominent vibration components equally well at any amplitude.
Zero Crossing Frequency:	Determining the apparent dominate frequency of a given sample can be achieved by using the Zero Crossing Frequency.

Primary Waves (P Waves):	Alternating compressions ('pushes') and dilations ('pulls') in the same direction as the wave is propagating. P waves are the first arriving energy, smaller and higher frequency than S waves.
Secondary Waves (S Waves):	Alternating transverse motions perpendicular to the direction of propagation. Slower than P waves.
Rayleigh Waves (R Waves):	Motion is both in the direction of propagation and perpendicular (in a vertical plane). R waves are also dispersive, and amplitudes decrease with depth.
Accelerometer:	A vibration sensor whose electrical output is directly proportional to the acceleration component of the vibration. The two most common accelerometer types are the traditional charge type and the IEPE, integrated electronic piezoelectric type with a built-in line-drive amplifier to enable the output signal to be transmitted over 'longer cable runs'.
Filter:	A device for separating components of a signal on the basis of their frequency. It allows components in one or more frequency bands to pass relatively unattenuated, and it attenuates components in other frequency bands. Modifies the frequency spectrum of a signal usually while it is in electrical form.
Short-term vibration	Vibration which does not occur often enough to cause structural fatigue, and which does not produce resonance in the structure being evaluated.
Long-term vibration	All types of vibration not covered by the definition of 'short-term' vibration.

1 INTRODUCTION

1.1 Project Background

Kingscliff is located in the Northern Rivers region of New South Wales. The Site is bounded by the Tweed Coast Road to the West, Cudgen Road to the South and Turnock Street to the East.

Delta Group are undertaking Earthworks for the Tweed Valley Hospital Project located at 771 Cudgen Road, Kingscliff NSW, hereafter referred to as 'the Site'. The Site was previously agricultural land and excavation works were on going during April 2020.

The purpose of the Vibration Monitoring Assessment (VMA) report is to assess the impacts of piling, excavation and general construction works from the Tweed Valley Hospital Project upon the surrounding community.

Table 1. Project Specific Information.

Project Specific Information	
Scope:	This vibration report provides detailed real time vibration monitoring results at three locations within the site.
Objectives:	<ul style="list-style-type: none">• Comply with DIN 4150-3:2016 guidelines and conditions C21 - C24 of the consent.• Avoid or minimise vibration impacts from activities which could affect the nearby buildings (Kingscliff Tafe and residential properties).• To minimise the generation of vibration which could affect the neighbours of the site, workers on the site and associated building and other members of the public.• Establish and maintain good relationships with the neighbours and wider community.
Key Issues and Risks:	<p>While using mobile plant and conducting piling operations, nearby residential and commercial buildings and their occupants may be affected by vibration.</p> <p>A pre-work vibration assessment was carried out and compared to the DIN 4150-3:2016 Vibration Standards for Buildings, this information will determine possible impacts of other sensitive premises identified in the area.</p> <p>Vibration generating activities that has likely contributed to the level of current vibration are listed in Appendix 2 and 3 of the Lendlease Noise and Vibration Management Plan.</p>
Key Legislation/ Standards/ Guidance:	<p><i>Protection of the Environment Operations Act 1997 (NSW) (POEO Act).</i></p> <p>The POEO Act is a key piece of environmental protection legislation and regulates activities via:</p> <ul style="list-style-type: none">• Environmental protection licensing, as per schedule 1;• Regulation of scheduled and non-scheduled activities;• Environmental protection offences and penalties; and• Establishment of a general duty of care to notify environment harm.

Table 1. Continued...

Project Specific Information	
Key Legislation/ Standards/ Guidance:	<p><i>Vibrations in buildings Part 3: Effects on structures DIN4150-3 February 2016.</i></p> <p>This standard specifies a method of measuring and evaluating the effects of vibration on structures designed primarily for static loading. It applies to structures which do not need to be designed to specific standards or codes of practice as regards dynamic loading.</p> <p>This standard also gives guideline values which, when compiled with, will not result in damage that will have an adverse effect on the structure's serviceability. In some cases, guideline values for a simplified evaluation are also given.</p>

1.2 Previous Report

Refer to the previous report (DLT-01-Q1013 / VIB8 / v1f.2) for details from earlier monitoring periods.

1.3 Monitoring Locations

The three (3) vibration monitors are located within the confines of the site adjacent to Cudgen Road and were supplied by the client (refer to **Appendix I – Aerial Photograph**).

Vibrations were recorded at the above-mentioned locations throughout the preparation works of the Tweed Valley Hospital Project.

The vibration monitors are operational from 6.45am to 7pm daily commencing April 2020 for this reporting period.

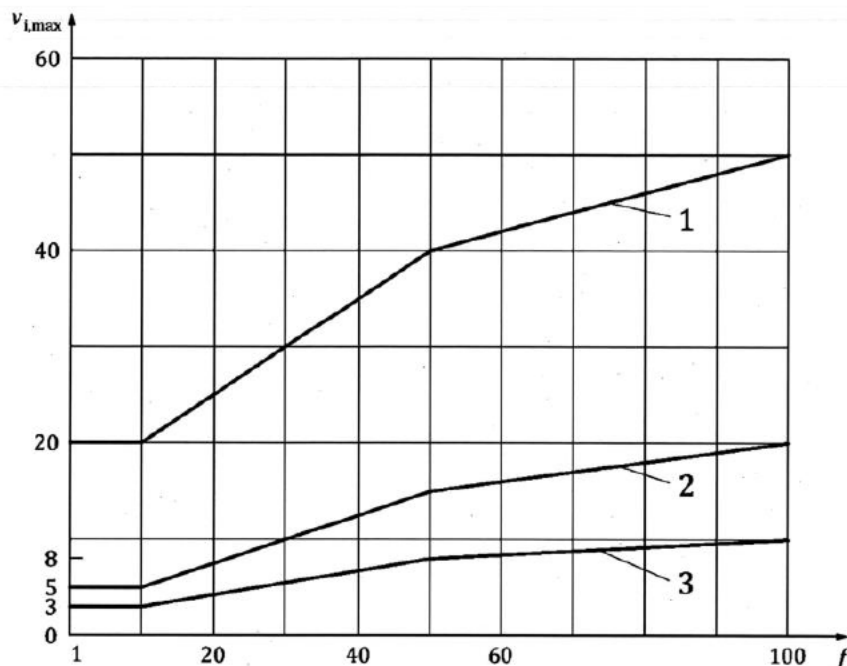
Vibration monitors at locations 001 and 002 were removed whilst tree clearing was undertaken as they were obstructing works. The monitors were reinstalled on the 6th of April at the client's request.

1.4 Limits for Vibration

The Peak Vibration Velocity (PVV) limits for the duration of work have been adopted from *Vibrations in buildings Part 3: Effects on structures DIN4150-3 February 2016*. Lines 1 and 2 in Table 2 below apply to the surrounding structures of the Tweed Valley Hospital project, including the Kingscliff TAFE and nearby residences.

Table 2. Guideline Values for Vibration Velocity to Evaluate the Effects of Short-Term Vibration on Structures.

Line	Type of Structure	Peak Vibration Velocity, mm/s				
		At foundation at a frequency of			Highest floor, horizontal direction	Floor Slabs, vertical direction
		1 to 10 Hz	10 to 50 Hz	50 to 100 Hz	All Frequencies	All Frequencies
1	Buildings used for commercial purposes, industrial buildings and buildings of similar design	20	20 to 40	40 to 50	40	20
2	Dwellings and buildings of similar design and/or occupancy	5	5 to 15	15 to 20	15	20
3	Structures that, because of their particular sensitivity to vibration, cannot be classified under lines 1 and 2 and are of great intrinsic value (e.g. listed buildings under preservation order)	3	3 to 8	8 to 10	8	20



Graph 1. Graph of the lines 1, 2 and 3 according to Table 2.

1.5 Monitoring Frequency

This reporting period, vibration monitoring was carried out for a period from Wednesday 1st April 2020 to Thursday 30th April 2020 to determine the level of ground vibration that is experienced on the boundary of the site before travelling off-site as per the German Vibration Standard DIN4150. Vibration monitoring was completed during the hours 6.45am – 7pm every day from Wednesday 1st April 2020 to Thursday 30th April 2020 for this reporting period.

1.6 Survey Instrumentation and Methodology

The vibration monitors were enclosed in a tough case which was placed on the ground.

The vibration monitors are covered with a tarp to aid in keeping temperatures below 60°C and to ensure continuous monitoring. The accelerometer was placed firmly against the soil surface with sandbags over top to minimize external interference. The monitors were positioned within the site along the boundary adjacent Cudgen Road.

The vibration measurements were recorded using Profound Vibra+ vibration monitors.

1.7 Existing Vibration Environment

The main on-going vibration source in the area prior to site establishment was:

- Car and Trucks passing by on nearby Cudgen Road.

The main cause for vibration throughout this monitoring period (in addition to cars and trucks from nearby Cudgen Road) is:

- Earthworks and excavation works being undertaken by Delta Group (i.e. the use of excavators, bulldozers, piling machines, trucks).

An alarm beacon was set-up with the vibration monitors in order to alert Delta and the Site Supervisor in the case of an exceedance in real-time. If the alarm was triggered, Delta and the Site Supervisor would receive a text SMS and need to note the date and time, document the activity and consider implementing controls and work practices reviewed before re-commencing works.

2 RESULTS

The results of the **total velocity** in mm/s from the monitoring performed for the dates Wednesday 1st April 2020 to Thursday 30th April 2020 are summarised in Figures 1, 2 and 3 below.

Monitors at locations 001 and 002 needed to be relocated on the 31st of March 2020 at the request of Delta Group to allow for tree clearing works. None of the alternative monitoring locations considered prior to the tree clearing works were deemed viable; as such, the monitors were stored inside of the Delta site office until tree clearing works were completed on the 6th of April 2020.

If there is a day in which the velocity is above 5 mm/s, a graph of the velocity and the frequency will be added, and results will be compared against Line 1 and Line 2 from Graph 1. In total, four (4) velocities >5mm/s were detected at Monitoring Location 001 and one (1) at Monitoring Location 003. The graphs for these exceedances are presented in Figures 4-8.

ADE notes that values >5mm/s recorded at Monitoring Location 001 (Figure 1) and Monitoring Location 003 (Figure 3) on the 16th and 23rd can be correlated to ADE site visits (refer to *Appendix B – ADE Site Time Summary*). As such, no comparison against Line 1 and Line 2 from Graph 1 has been completed.

A value >5mm/s on the 6th April 2020 was recorded at location 001 – Adjacent carpark from 0813 to 0830 while ADE was on-site, the cause of the exceedance was a soil roller-compactator operating approximately 10 metres away from the monitor (refer to Figure 4). Values have exceeded Line 2. As per Table 2 of the NSW Government *Construction Noise and Vibration Guideline (2016)*, a vibratory roller above 18 tonnes has a minimum working distance of 25m for cosmetic damage. The distance between the monitor and the sensitive receiver is 36m. Therefore, the vibration at the receiver would be below lines 1 & 2.

Works were only conducted between 7am and 6pm, Monday – Friday from the 1st – 30th and only data within this range should be considered.

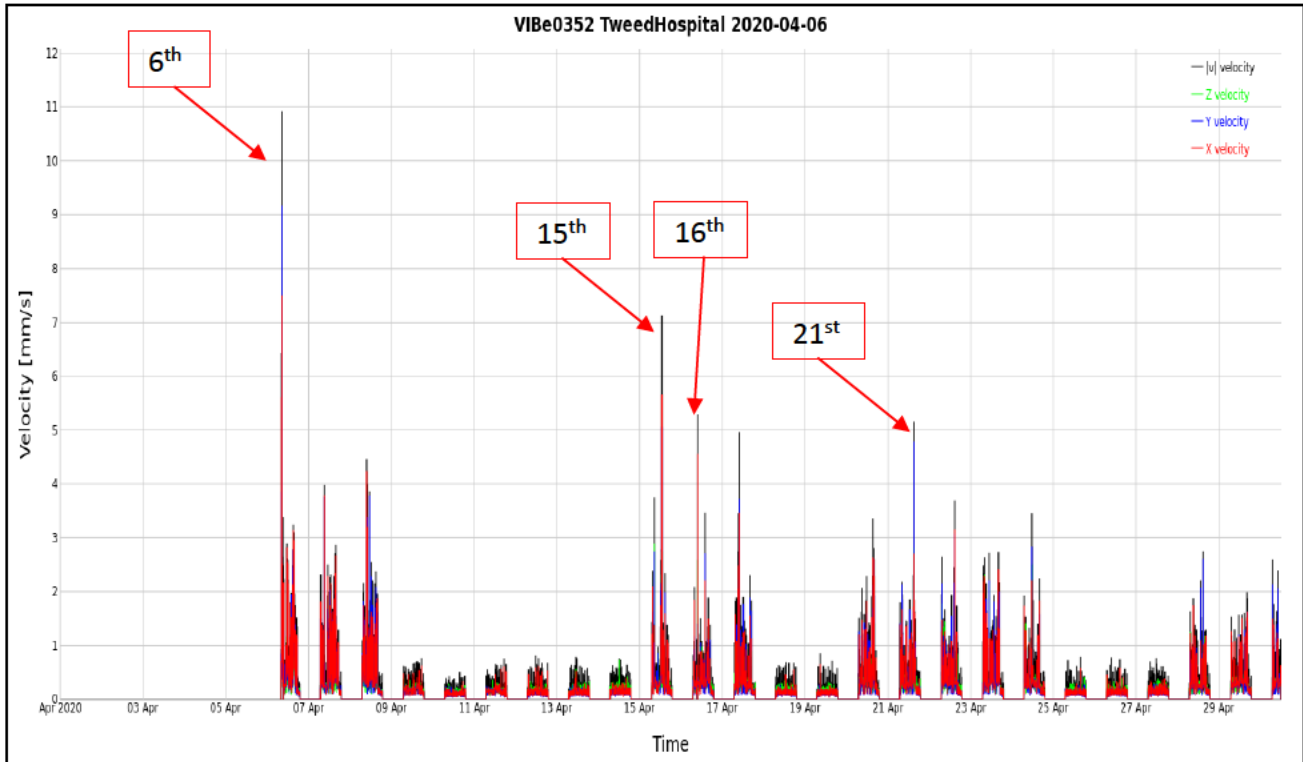


Figure 1. Results of the vibration monitoring from Wednesday 1st April 2020 to Thursday 30th April 2020 at monitoring location 001 – Adjacent carpark.

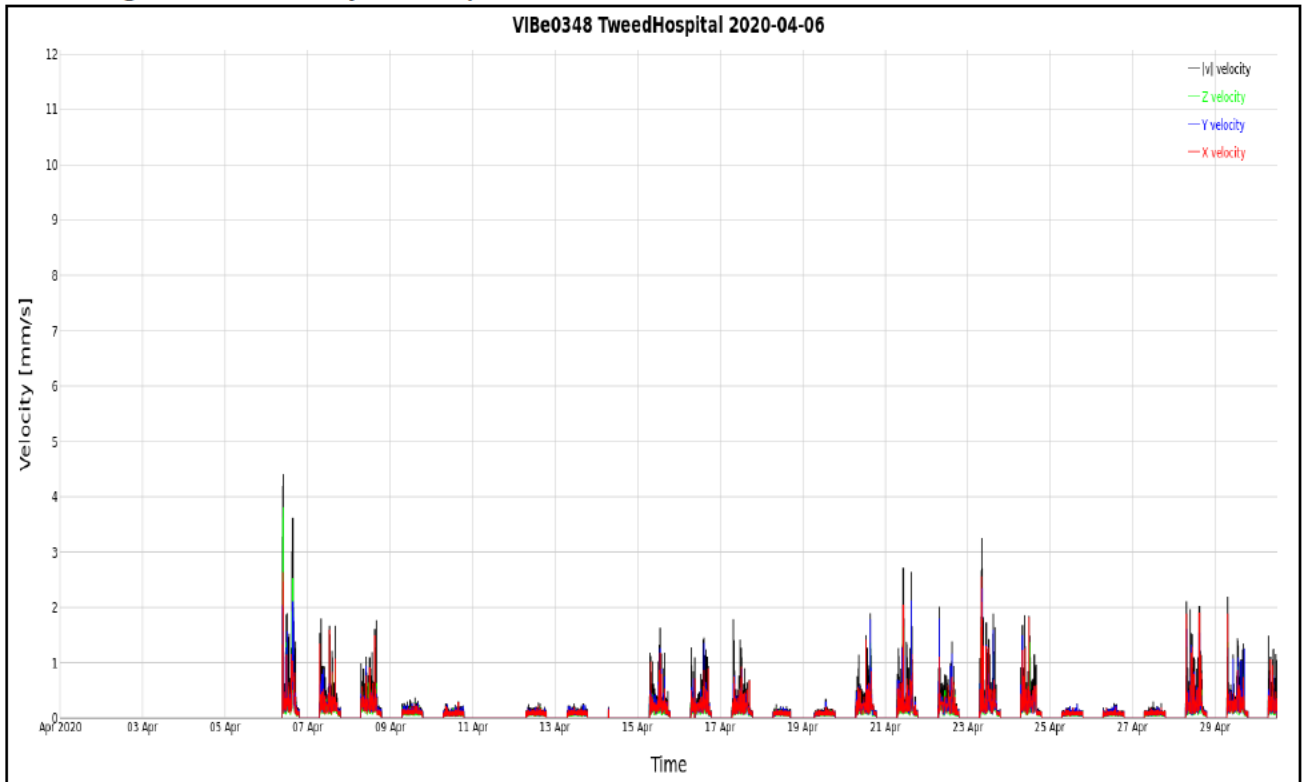


Figure 2. Results of the vibration monitoring from Wednesday 1st April 2020 to Thursday 30th April 2020 at monitoring location 002 – Central monitor.

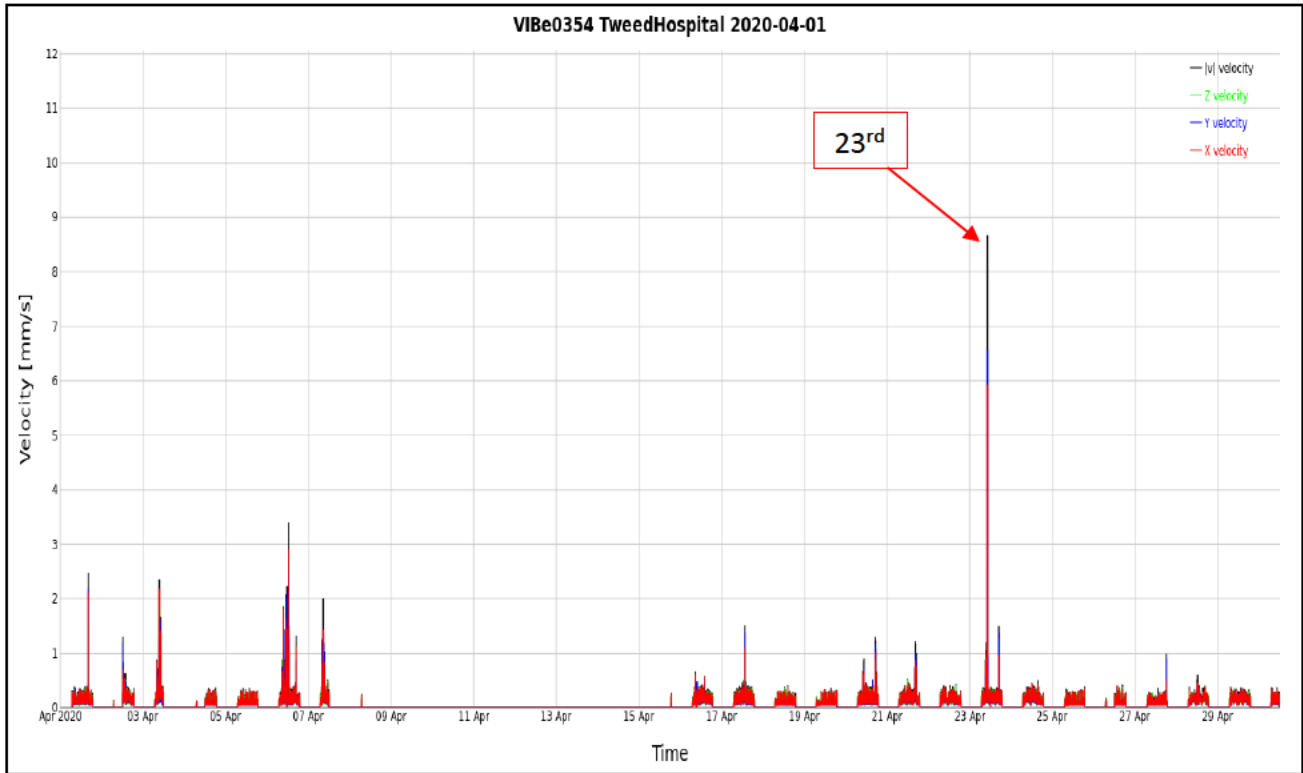


Figure 3. Results of the vibration monitoring from Wednesday 1st April 2020 to Thursday 30th April 2020 at monitoring location 003 – Eastern section of site.

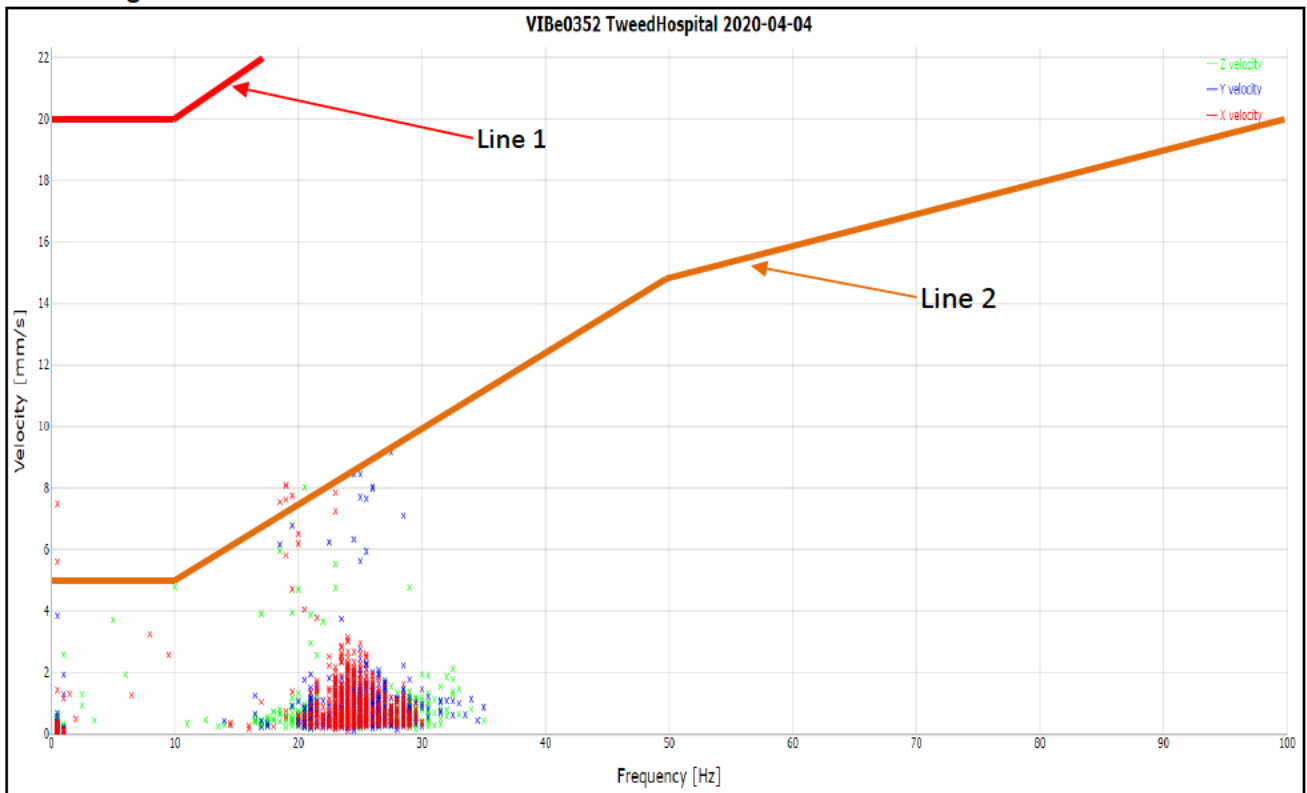


Figure 4. Results of the exceedance on Monday 6th April 2020 at monitoring location 001 – Adjacent carpark.

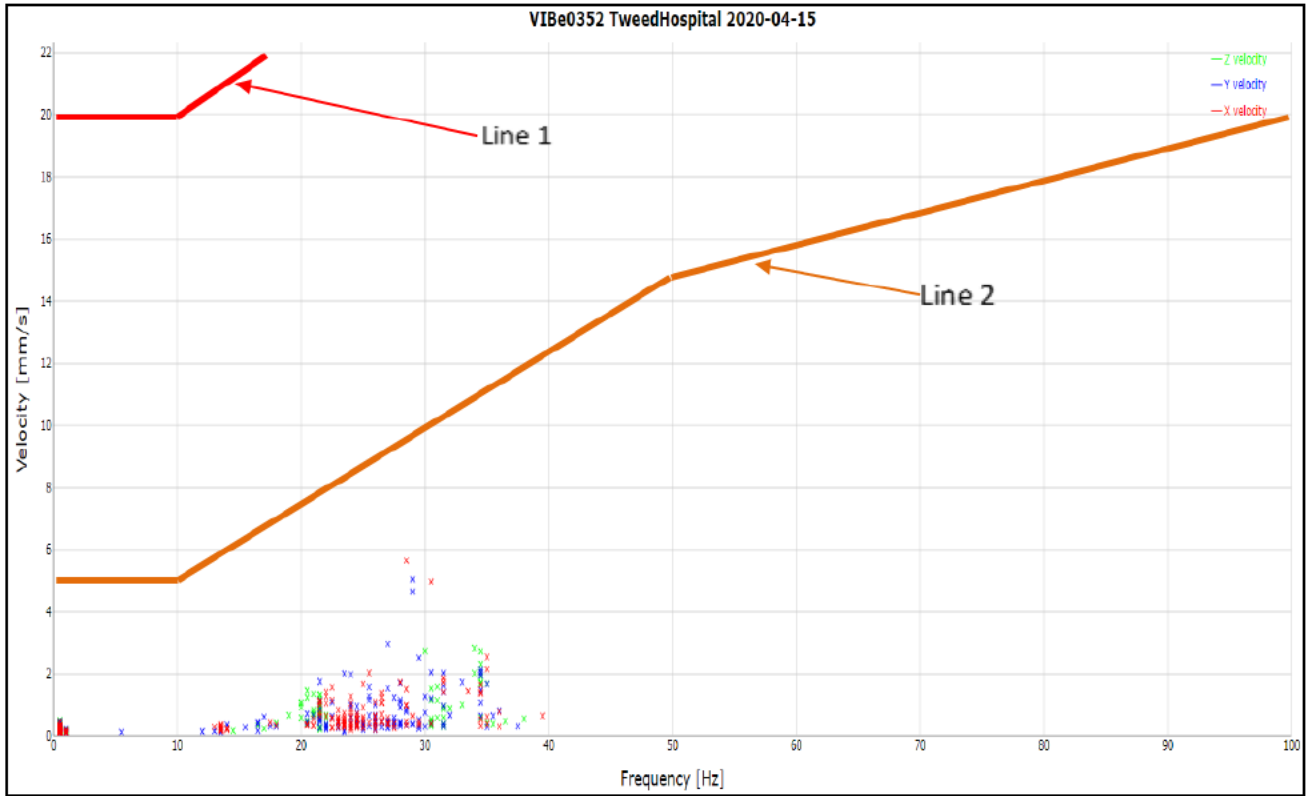


Figure 5. Results of the exceedance on Wednesday 15th April 2020 at monitoring location 001 – Adjacent carpark.

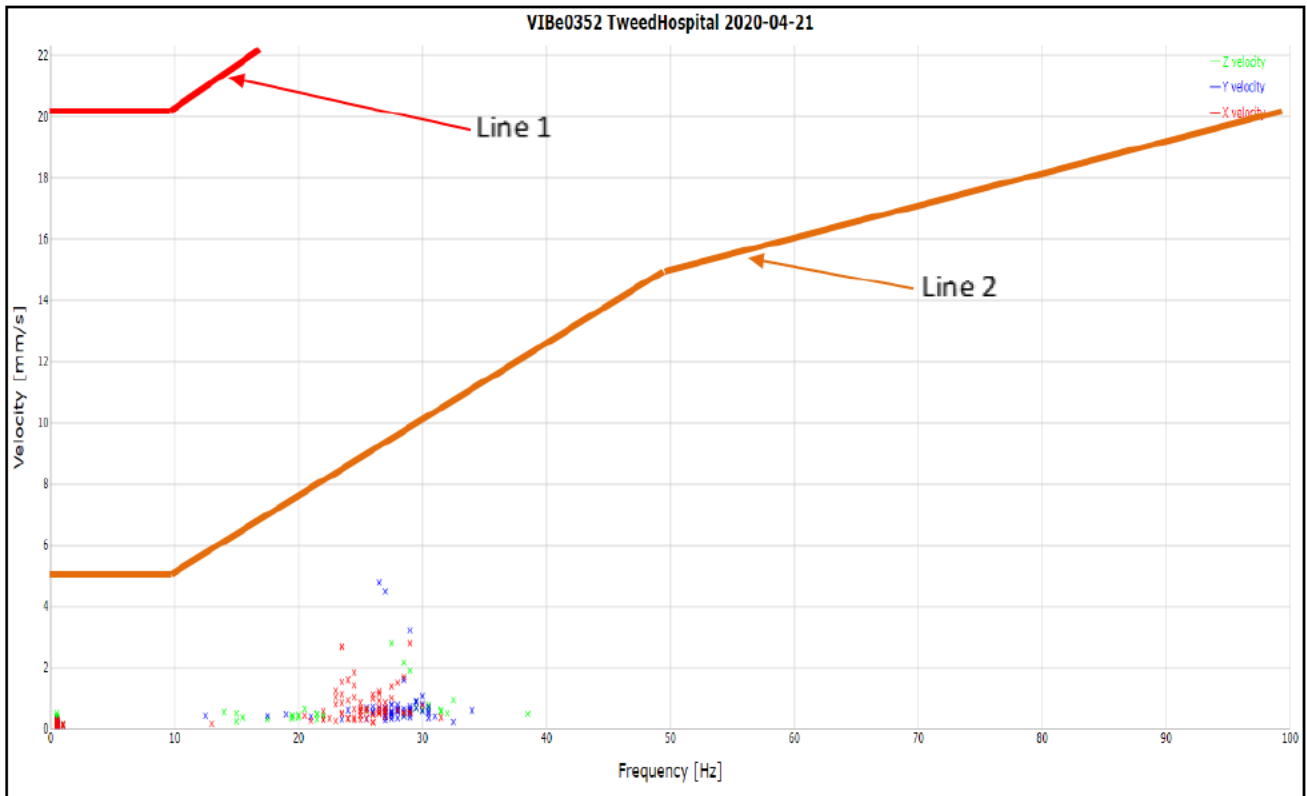


Figure 7. Results of the exceedance on Tuesday 21st April 2020 at monitoring location 001 – Adjacent carpark.

3 DISCUSSION

One exceedance of Line 2 occurred on the 6th of April between 0813 and 0830. The cause of the exceedance was a soil roller-compactor operating approximately 10 metres away from the monitor (refer to Figure 4). Values have exceeded Line 2. As per Table 2 of the NSW Government *Construction Noise and Vibration Guideline (2016)*, a vibratory roller above 18 tonnes has a minimum working distance of 25m for cosmetic damage. The distance between the monitor and the sensitive receiver is 36m. Therefore, the vibration at the receiver would be below lines 1 & 2.

Vibration values >5mm/s on the 16th of April 2020 at monitoring location 001 and the 23rd of April 2020 at monitoring location 003 were caused by ADE performing maintenance on the monitors and are not due to construction works. All other values were below Line 1 and Line 2.

4 CONCLUSION

Results from vibration monitoring undertaken during the monitoring period [April 2020] were **below** the threshold used to assess the effects of short-term vibration on structures according to DIN 4150-3. Therefore, the site works had no impact on any surrounding properties.

5 REFERENCES

- Vibrations in buildings Part 3: Effects on structures DIN4150-3 February 2016.
- Department of Environment and Conservation, Environmental Noise Management, Assessing Vibration: a technical guideline.
- NSW Government, Construction Noise and Vibration Guideline August 2016.

Sydney Office:

ADE Consulting Group Pty Ltd
Unit 6 / 7 Millennium Court
Silverwater, NSW 2128

Melbourne Office:

ADE Consulting Group Pty Ltd
Unit 4 / 95 Salmon Street
Port Melbourne, VIC 3207

Newcastle Office:

ADE Consulting Group Pty Ltd
Unit 9 / 103 Glenwood Drive
Thornton, NSW 2322

Brisbane Office:

ADE Consulting Group Pty Ltd
Unit 3 / 22 Palmer Place
Murarrie QLD 4172

Contact Us:

Site: www.ADE.Group
Email: info@ade.group
Phone: 1300 976 922

APPENDIX I

Aerial Photograph of Monitoring Locations

Sydney Office:
ADE Consulting Group Pty Ltd
Unit 6 / 7 Millennium Court
Silverwater, NSW 2128

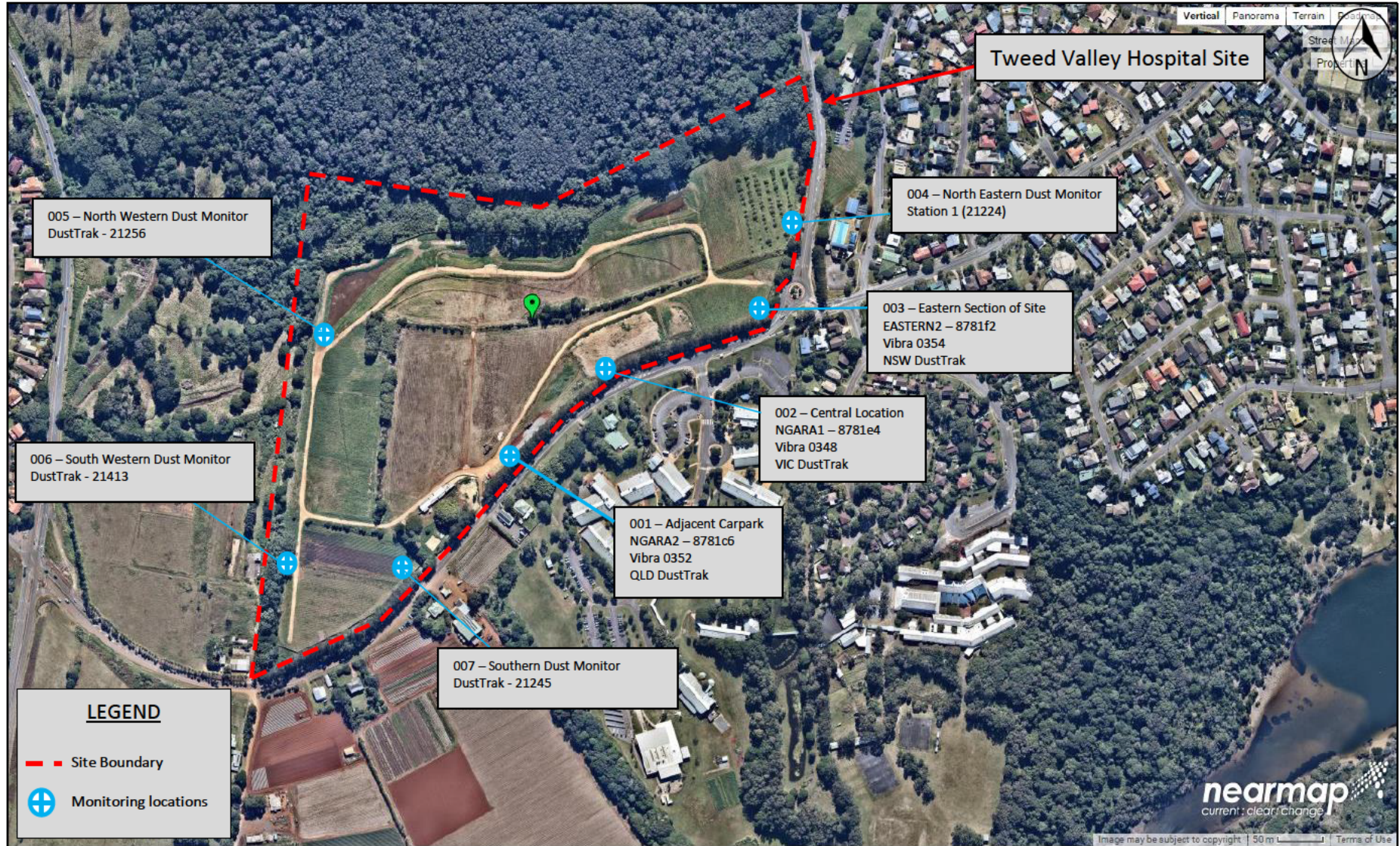
Melbourne Office:
ADE Consulting Group Pty Ltd
Unit 4 / 95 Salmon Street
Port Melbourne, VIC 3207

Newcastle Office:
ADE Consulting Group Pty Ltd
Unit 9 / 103 Glenwood Drive
Thornton, NSW 2322

Brisbane Office:
ADE Consulting Group Pty Ltd
Unit 3 / 22 Palmer Place
Murarrie QLD 4172

Contact Us:
Site: www.ADE.Group
Email: info@ade.group
Phone: 1300 976 922

Aerial photograph of the DLT works area at Kingscliff



Sydney Office:
ADE Consulting Group Pty Ltd
Unit 6 / 7 Millennium Court
Silverwater, NSW 2128

Melbourne Office:
ADE Consulting Group Pty Ltd
Unit 4 / 95 Salmon Street
Port Melbourne, VIC 3207

Newcastle Office:
ADE Consulting Group Pty Ltd
Unit 9 / 103 Glenwood Drive
Thornton, NSW 2322

Brisbane Office:
ADE Consulting Group Pty Ltd
Unit 3 / 22 Palmer Place
Murarrie QLD 4172

Contact Us:
Site: www.ADE.Group
Email: info@ade.group
Phone: 1300 976 922

APPENDIX II

Monitoring Locations

Sydney Office:
ADE Consulting Group Pty Ltd
Unit 6 / 7 Millennium Court
Silverwater, NSW 2128

Melbourne Office:
ADE Consulting Group Pty Ltd
Unit 4 / 95 Salmon Street
Port Melbourne, VIC 3207

Newcastle Office:
ADE Consulting Group Pty Ltd
Unit 9 / 103 Glenwood Drive
Thornton, NSW 2322

Brisbane Office:
ADE Consulting Group Pty Ltd
Unit 3 / 22 Palmer Place
Murarrie QLD 4172

Contact Us:
Site: www.ADE.Group
Email: info@ade.group
Phone: 1300 976 922



Photograph 1. Representative photo of the monitoring location 001 – Adjacent Carpark location, as observed on the 05.05.2020.

Sydney Office:
ADE Consulting Group Pty Ltd
Unit 6 / 7 Millennium Court
Silverwater, NSW 2128

Melbourne Office:
ADE Consulting Group Pty Ltd
Unit 4 / 95 Salmon Street
Port Melbourne, VIC 3207

Newcastle Office:
ADE Consulting Group Pty Ltd
Unit 9 / 103 Glenwood Drive
Thornton, NSW 2322

Brisbane Office:
ADE Consulting Group Pty Ltd
Unit 3 / 22 Palmer Place
Murarrie QLD 4172

Contact Us:
Site: www.ADE.Group
Email: info@ade.group
Phone: 1300 976 922



Photograph 2. Representative photo of the monitoring location 002 – Central location, as observed on the 05.05.2020.

Sydney Office:
ADE Consulting Group Pty Ltd
Unit 6 / 7 Millennium Court
Silverwater, NSW 2128

Melbourne Office:
ADE Consulting Group Pty Ltd
Unit 4 / 95 Salmon Street
Port Melbourne, VIC 3207

Newcastle Office:
ADE Consulting Group Pty Ltd
Unit 9 / 103 Glenwood Drive
Thornton, NSW 2322

Brisbane Office:
ADE Consulting Group Pty Ltd
Unit 3 / 22 Palmer Place
Murarrie QLD 4172

Contact Us:
Site: www.ADE.Group
Email: info@ade.group
Phone: 1300 976 922



Photograph 3. Representative photo of the monitoring location 003 – Eastern Section of Site, as observed on the 01.05.2020.

Sydney Office:
ADE Consulting Group Pty Ltd
Unit 6 / 7 Millennium Court
Silverwater, NSW 2128

Melbourne Office:
ADE Consulting Group Pty Ltd
Unit 4 / 95 Salmon Street
Port Melbourne, VIC 3207

Newcastle Office:
ADE Consulting Group Pty Ltd
Unit 9 / 103 Glenwood Drive
Thornton, NSW 2322

Brisbane Office:
ADE Consulting Group Pty Ltd
Unit 3 / 22 Palmer Place
Murarrie QLD 4172

Contact Us:
Site: www.ADE.Group
Email: info@ade.group
Phone: 1300 976 922

APPENDIX III

ADE Site Time Summary

Sydney Office:
ADE Consulting Group Pty Ltd
Unit 6 / 7 Millennium Court
Silverwater, NSW 2128

Melbourne Office:
ADE Consulting Group Pty Ltd
Unit 4 / 95 Salmon Street
Port Melbourne, VIC 3207

Newcastle Office:
ADE Consulting Group Pty Ltd
Unit 9 / 103 Glenwood Drive
Thornton, NSW 2322

Brisbane Office:
ADE Consulting Group Pty Ltd
Unit 3 / 22 Palmer Place
Murarrie QLD 4172

Contact Us:
Site: www.ADE.Group
Email: info@ade.group
Phone: 1300 976 922

Date of site visit	Time of site visit
06.04.2020	0630 to 1100
16.04.2020	0820 to 1020
23.04.2020	0830 to 1030
01.05.2020	0730 to 1130
05.05.2020	0730 to 1045

Sydney Office:
ADE Consulting Group Pty Ltd
Unit 6 / 7 Millennium Court
Silverwater, NSW 2128

Melbourne Office:
ADE Consulting Group Pty Ltd
Unit 4 / 95 Salmon Street
Port Melbourne, VIC 3207

Newcastle Office:
ADE Consulting Group Pty Ltd
Unit 9 / 103 Glenwood Drive
Thornton, NSW 2322

Brisbane Office:
ADE Consulting Group Pty Ltd
Unit 3 / 22 Palmer Place
Murarrie QLD 4172

Contact Us:
Site: www.ADE.Group
Email: info@ade.group
Phone: 1300 976 922

APPENDIX IV

VIBRA Technical Specifications

Sydney Office:
ADE Consulting Group Pty Ltd
Unit 6 / 7 Millennium Court
Silverwater, NSW 2128

Melbourne Office:
ADE Consulting Group Pty Ltd
Unit 4 / 95 Salmon Street
Port Melbourne, VIC 3207

Newcastle Office:
ADE Consulting Group Pty Ltd
Unit 9 / 103 Glenwood Drive
Thornton, NSW 2322

Brisbane Office:
ADE Consulting Group Pty Ltd
Unit 3 / 22 Palmer Place
Murarrie QLD 4172

Contact Us:
Site: www.ADE.Group
Email: info@ade.group
Phone: 1300 976 922

VIBRA-series: VIBRA, VIBRA⁺



Profound VIBRA-series

Vibrations from pile driving, construction, road or rail traffic, demolition work and blasting can create nuisance or cause damage to buildings and sensitive equipment. These vibrations are accurately quantified with a system of the Profound VIBRA-series.

The VIBRA's robust aluminium housing is IP65 watertight. The system is easily portable, lightweight and battery-operated which allows for up to 4 weeks of continuous and unmanned operation.

Depending on the chosen model VIBRA or VIBRA⁺, the system complies with national and international standards and is according to DIN 45669-1:2010. The specific characteristics of each model are further outlined in the VIBRA features overview.

Setting up the system on site is easy: attach the 3-dimensional sensor to the structure to be monitored, switch on the system and start measuring. While measuring the VIBRA displays date, time, time interval and the current peak vibration values including frequency in all 3 directions. In advance an alarm level can be set.

Peak values including dominant frequencies, are directly stored in memory. For full interpretation measurement signals are transferred via USB to a computer for further analysis. The VIBRA pc software automatically generates tables and graphs of peak values and signals for use in reports. The data can also be easily exported as a csv-file.

The VIBRA⁺ can be set up for wireless automatic data transfer including sms alerts via the integrated 3G modem. Data can also be continuously uploaded to any FTP server for real-time online monitoring. As an alternative Profound offers a turnkey online monitoring service.

Technical specifications VIBRA-series	
Velocity (PPV), frequency and acceleration (PPA)	In x, y, z-direction per time interval
Displacement (VIBRA ⁺ only)	In x, y, z-direction per time interval
Sensor type	3-channel geophone
Geophone correction	Digital IR filter
Velocity range	0 – 100 mm/s
Resolution display	0.01 mm/s
Resolution AD-converter	0.001 mm/s (24 bits ADC)
Frequency range and accuracy	DIN 45669-1:2010-09 or SBR – part A, B 2002
Storage capacity	4 MB. Fixed or ring memory incl. buffer
Storage interval	1, 2, 5, 10, 20, 30, 60 s
Data save level	Adjustable between 0.01-100.00 mm/s (or always)
Alarm level	Adjustable between 0.01-100.00 mm/s (or none)
Data retention	10 years (minimum) at 25 °C
Clock stability	Within 5 minutes/year at 25 °C
Temperature range (operating)	- 20 °C to + 60 °C
Housing	Robust hard anodized aluminium case
Protection rating	IP65 according to DIN 40 050/IEC 529
Dimensions (l x w x h)	216 x 160 x 50 mm
Weight	2 kg
Display	≥ 4 Lines; display backlight; anti-reflex coating; anti-scratch
Batteries	3 x 1.5 V Alkaline D-size batteries
Battery life	≈ 28 days (continuous operation)
I/O functionality	Geophone, mini-USB
PC operating system	WIN10/WIN8/WIN7
Accessories	VIB.00320 Cable reel (50m) VIB.00407 Alarm beacon VIB.00420 USB adapter. External power via USB adapter: V _{main} 100 ↔ 240 V, 47 ↔ 63 Hz

Sydney Office:
ADE Consulting Group Pty Ltd
Unit 6 / 7 Millennium Court
Silverwater, NSW 2128

Melbourne Office:
ADE Consulting Group Pty Ltd
Unit 4 / 95 Salmon Street
Port Melbourne, VIC 3207

Newcastle Office:
ADE Consulting Group Pty Ltd
Unit 9 / 103 Glenwood Drive
Thornton, NSW 2322

Brisbane Office:
ADE Consulting Group Pty Ltd
Unit 3 / 22 Palmer Place
Murarrie QLD 4172

Contact Us:
Site: www.ADE.Group
Email: info@ade.group
Phone: 1300 976 922