

# Environmental Noise Assessment Report (March 2020)

Tweed Valley Hospital Project, Kingscliff NSW

Prepared for: Delta Group





**ADE**  
CONSULTING  
GROUP

Prepared for:

Delta Group

## **Environmental Noise Assessment Report**

Tweed Valley Hospital Project, Kingscliff NSW

Version	Details	Date
V1f	Written by [REDACTED]	7 <sup>th</sup> April 2020
V1.1f	Revised by [REDACTED]	12 <sup>th</sup> May 2020
V1.2f	Revised by [REDACTED]	22 <sup>nd</sup> May 2020
V1.3f	Revised by [REDACTED]	2 <sup>nd</sup> June 2020

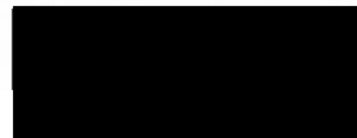
**Report No:**

DLT-01-Q1013 / NMA8 / v1.3f

**Date:**

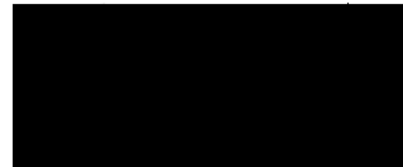
2<sup>nd</sup> June 2020

**Written By:**



B. Env. Sci.  
Occupational Hygienist

**Reviewed By:**



Principal Occupational Hygienist  
B. Industrial Engineering  
M. (Ind. Hygiene)

This report is copyright. No part of this publication may be reproduced or transmitted in any form or by any means, electronic or mechanical, including photocopying without permission in writing from ADE

Consulting Group Pty Ltd.



**ENVIRONMENTAL NOISE ASSESSMENT REPORT**  
**ADE Report No. DLT-01-Q1013 / NMA8 v1.3f**

**EXECUTIVE SUMMARY**

Environmental noise monitoring was conducted at Tweed Valley Hospital Project, Kingscliff NSW commencing on 26<sup>th</sup> July 2019 as per Delta Group requirements. This report will ensure environmental noise produced by the construction works on site comply with:

- Lendlease Building Pty Ltd Tweed Valley Hospital – Management Plan – Noise and Vibration dated 15 April 2019 Revision 7.0;
- *NSW Work health and Safety regulation (2017), clause 56 exposure standard for noise* for the duration of the project;
- Conditions C5 – C8 of Schedule 3 of the consent; and
- EPA's Interim Construction Guidelines.

Background Environmental noise monitoring commenced on 26<sup>th</sup> July 2019 in three (3) separate locations. These locations are along the south eastern boundary of the site, near Cudgen Road (refer to *Appendix I – Aerial Photograph of monitoring locations*). These monitoring locations were chosen to determine if noise being generated from the construction site complies with the levels stated in the above-mentioned guidelines. It has been determined that if the environmental noise levels at the boundary comply with the relevant guideline values, then the noise levels at the neighbouring properties would not be of great concern.

The time construction noise can be generated is regulated by the inclusion of standard construction hours are regulated by Conditions C5 – C8 of Schedule 3 of the consent. According to condition C5, the recommended standard hours for construction work are:

Normal Construction – Monday to Friday 7am to 6pm,  
Saturday 8am to 1pm  
No work on Sundays or public holidays

The background noise level has been assessed for the project and the EPA's Interim Guidelines mention that the Management level of noise LAeq, 15 min should not be greater than 10 decibels above the background noise level during the normal construction times and no greater than 5 decibels outside of the normal construction times.

The background noise levels and results for monitoring conducted from 27<sup>th</sup> July 2019 to 31<sup>st</sup> July 2019 are listed in Table 1 on the following page.

A total of one (1) exceedance occurred throughout the month of March. The exceedance occurred at the central monitoring location at 7.15am on the 31<sup>st</sup> of March 2020 over a period of <3 hours and as such no respite periods were necessary as per the Lendlease Building Pty Ltd Tweed Valley Hospital – Management

Plan – Noise and Vibration dated 15 April 2019 Revision 7.0. The exceedance was due to ADE dismantling and removing the monitor at the request of Delta Group to allow for tree clearing works.

**Table 1. Background Noise Levels**

BACKGROUND NOISE LEVELS dB(A)				
		Monitoring Location		
		001 Adjacent to carpark	002 Central location	003 Eastern section
Day:	7am to 6pm	73	73	69
Evening:	6pm to 10pm	63	62	60
Night:	10pm to 7am	57	56	55

\*ND = No Data

### Summary of Exceedances March 2020

A total of one (1) exceedance occurred throughout the month of March. The exceedance occurred at the central monitoring location at 7.15am on the 31<sup>st</sup> of March 2020 over a period of <3 hours and as such no respite periods were necessary as per the Lendlease Building Pty Ltd Tweed Valley Hospital – Management Plan – Noise and Vibration dated 15 April 2019 Revision 7.0. The exceedance was due to ADE dismantling and removing monitors which needed to be removed to allow tree clearing works to proceed. No alternative locations were deemed viable, the monitors were reinstated when the works were completed.

## **TABLE OF CONTENTS**

<b>EXECUTIVE SUMMARY .....</b>	<b>3</b>
<b>TABLE OF CONTENTS .....</b>	<b>5</b>
<b>DEFINITIONS .....</b>	<b>6</b>
<b>1 INTRODUCTION .....</b>	<b>8</b>
1.1 Project Background .....	8
1.2 Monitoring locations .....	9
1.3 Monitoring Frequency.....	9
1.4 Noise Management Levels .....	9
1.5 Survey Instrumentation and Methodology .....	12
1.6 Existing Noise Environment.....	12
1.7 Meteorological conditions .....	12
<b>2 RESULTS .....</b>	<b>13</b>
<b>3 DISCUSSION .....</b>	<b>15</b>
<b>4 CONCLUSION.....</b>	<b>16</b>
<b>APPENDIX I .....</b>	<b>17</b>
<b>APPENDIX II .....</b>	<b>19</b>
<b>APPENDIX III .....</b>	<b>23</b>
<b>RAIN AND WINDY CONDITIONS .....</b>	<b>23</b>
<b>APPENDIX IV .....</b>	<b>24</b>
<b>ADE SITE TIME SUMMARY .....</b>	<b>24</b>
<b>APPENDIX V .....</b>	<b>26</b>

## DEFINITIONS

<b>Airborne noise management levels</b>	– to be measured and assessed at the residential property boundary that is most exposed to construction noise, and at a height of 1.5 m above ground level. If the residential property boundary is more than 30 m from the residence, the location for measuring or predicting noise levels is at the most affected point within 30 m of the residence.
<b>Assessment location</b>	– an identified residence or other sensitive land use.
<b>A-weighting</b>	– an adjustment made to the sound level measurement to approximate the response of the human ear.
<b>Background noise level</b>	– the underlying level of noise present in the ambient noise when extraneous noise is removed and excluding noise from the construction project under consideration. This is described using the $L_{A90}$ descriptor.
<b>Construction works</b>	– include the erection, installation, alteration, repair, maintenance, cleaning, painting, renewal, removal, excavation, dismantling or demolition of, or addition to, any building or structure, or any work in connection with any of these activities, that is done at or adjacent to the place where the building or structure is located. Construction works occur on a site for a limited period of time only.
<b>Decibel (dB)</b>	– a measure of sound equivalent to 20 times the logarithm (to base 10) of the ratio of a given sound pressure to a reference pressure, and 10 times the logarithm (to base 10) of the ratio of a given sound power to a reference power.
<b>dB(A)</b>	– a measure of A-weighted sound levels.
<b>Emergency works</b>	– unforeseen works immediately needed to prevent the loss of life, damage to property or environmental harm.
<b>Environmental impact assessment</b>	– a broad term that covers the range of assessments required under the <i>Environmental Planning and Assessment Act 1979</i> and any related amendments to the Act.
<b>Extraneous noise</b>	– noise resulting from activities that are not typical of the area. Atypical activities include traffic generated by holiday periods and special events such as concerts or sporting events. Normal daily traffic is not considered to be extraneous.
<b>Ground-borne noise</b>	– noise heard within a building that is generated by vibration transmitted through the ground into the structure from construction works, sometimes referred to as ‘regenerated noise’ or ‘structure-borne noise’. Ground-borne noise can be more noticeable than airborne noise for underground works such as tunnelling. The ground-borne noise levels are only applicable when ground-borne noise levels are higher than airborne noise levels.
<b>Habitable room</b>	– any room other than a garage, storage area, bathroom, laundry, toilet or pantry.
<b>Internal noise level</b>	– applies at the centre of the room in use that is most exposed to the construction noise and can include both airborne and ground-borne noise.
<b><math>L_{A90}</math> (15 min)</b>	– the A-weighted sound pressure level that is exceeded for 90% of the 15-minute measurement period, when measured in the absence of the construction works

under consideration and excluding extraneous noise. This is considered to represent the background noise.

**L<sub>Aeq</sub> (15 min)** –

the A-weighted equivalent continuous (energy average) A-weighted sound pressure level of the construction works under consideration over a 15-minute period and excludes other noise sources such as from industry, road, rail and the community. Other descriptors may be used providing they can be justified as representing the characteristics of the construction noise.

**Most affected location(s)** – location(s) that experience (or will likely experience) the greatest noise impact from the construction works under consideration. In determining these locations, existing background noise levels, noise source location(s), distance and any shielding between the construction works (or proposed works) and the residences and other sensitive land uses need to be considered.

**Rating background level** – the overall single-figure background noise level for each assessment period. Determination of the rating background level is by the method described in the *NSW Industrial Noise Policy* (EPA 2000). This approach aims to result in the noise management level being met for at least 90% of the time periods (15 minutes each) over which reactions of annoyance can occur.

# 1 INTRODUCTION

## 1.1 Project Background

Delta Group are undertaking Earthworks for the Tweed Valley Hospital Project located at 771 Cudgen Road, Kingscliff NSW, hereafter referred to as 'the Site'. The Site was previously agricultural land and excavation works were on going during March 2020.

The purpose of this Noise Monitoring Assessment (NMA) report is to assess the impacts construction activities from the Tweed Valley Hospital Project have had on noise levels on site and ensure compliance with the Tweed Valley Hospital Management Plan – Noise and Vibration and conditions C5 – C8 and C19 from Schedule 3 of the consent below as well as the Criteria listed in Section 1.4.

C5	Construction, including the delivery of materials to and from the site, may only be carried out between the following hours: a) between 7am and 6pm, Mondays to Fridays; and b) between 8am and 1pm, Saturdays. No work may be carried out on Sundays or public holidays
C6	Activities may be undertaken outside of the hours in condition C5 of the Schedule 3, if required: a) by the Police or a public authority for the delivery of vehicles, plant or materials: or b) in an emergency to avoid the loss of life, damage to property or to prevent environmental harm: or c) where the works are inaudible at the nearest sensitive receivers; or d) where a variation is approved in advance in writing by the Planning Secretary or his nominee if appropriate justification is provided for the works.
C7	Notification of such activities must be given to affected residents before undertaking the activities or as soon as is practical afterwards.
C8	The construction hours must include respite periods and specific times for activities during the day ( outside the sensitive times), as required by condition B28(g) of Schedule 3 of this consent, for the high noise generating construction activities (such as activities that would reach or exceed the Highly Affected Level as defined in the ICNG).
C19	Unattended long-term construction noise monitoring must be undertaken during the Stage 1 works. The location of the unattended logger must be in accordance with the approved CNVMP required by condition B28 of Schedule 3. These loggers must be maintained and checked by a suitably qualified acoustician. The logger must automatically send a message to the suitably qualified acoustician once noise levels from construction works on the Site exceed 75dBA LAeq(15min) at the residential and non-residential receivers in Catchments A / B, Kingscliff TAFE and Kingscliff High School, to ensure that the mitigation measures specific to this exceedance are implemented on the Site at that time. The results of this monitoring must be provided to the Department for information on a monthly basis after the commencement of the Stage 1 construction works.



## 1.2 Monitoring Locations

The Site is located 771 Cudgen Road, bounded Tweed Coast Road to the West, Turncock Street to the East and Cudgen Road adjacent to the South at Kingscliff, NSW (refer to *Appendix I – Aerial Photograph of monitoring locations*).

Delta Group requested to ADE to set up three Sound Level Meters (SLM) within the site and to assess the levels of noise from them.

Airborne noise levels are recorded at these locations to determine the noise levels where the nearest receptors are. This reporting period, monitoring to determine the Background Noise Levels commenced on 26<sup>th</sup> July 2019 and continued until 31<sup>st</sup> July 2019 before the works started. These background noise levels were determined for the various time periods during the 24-hour day (refer to Table 2 below).

Table 2. Background Noise Levels

BACKGROUND NOISE LEVELS dB(A)				
		Monitoring Location		
		001 Adjacent to carpark	002 Central location	003 Eastern section
Day:	7am to 6pm	73	73	69
Evening:	6pm to 10pm	63	62	60
Night:	10pm to 7am	57	56	55

Construction and site work noise level recording commenced on 1<sup>st</sup> August 2019 and will continue for the duration of the project.

## 1.3 Monitoring Frequency

Monitoring is to be carried out for the duration of the DLT project in these locations as per the client request according to the Interim Construction Guideline NSW EPA 2009. Real time data from the continuous monitoring of the levels of noise is stored in a cloud data which is accessible to ADE consultants to monitor the levels of noise. Noise levels downloaded from the cloud will be averaged every 15 minutes ( $L_{Aeq(15\text{ min})}$ ) and compared with the Management Levels.

## 1.4 Noise Management Levels

Noise management levels depend on the noise receivers, the time and the day. For residences the levels are established depending on the day, the time and the Rating Background Level (RBL) being:

TIME OF THE DAY	MANAGEMENT LEVEL $L_{Aeq(15\text{ min})}$
<b>RECOMMENDED STANDARD HOURS</b> Monday to Friday 7 am to 6 pm Saturday 8 am to 1 pm No work on Sundays or public holidays	Noise affected RBL + 10 dB  Highly noise affected 75 dB(A)
<b>OUTSIDE RECOMMENDED STANDARD HOURS</b>	Noise affected RBL + 5 dB

For the other closest noise receivers, the management level,  $L_{Aeq(15min)}$ , will depend on the type of receivers other than residents and only apply when centers are on operation being the management levels:

LAND USE	MANAGEMENT LEVEL $L_{Aeq(15 min)}$
Active recreation Areas - Sport Activities	65 dB(A) External noise level
Industrial premises (External)	70 dB(A) External noise level

Being the Sound Level Meters for the project set up within the construction site, results from them cannot be directly compared with the Management Levels identified above because they are not measuring the level of noise received by the receptor.

ADE has calculated for each receptor the Management Levels based on:

- The distance in between the receptor and the location of the Sound Level Meter.
- The distance in between the Sound Level Meter and the location of the works performed.
- Knowing that there is a reduction of approximately 6dB(A) for each doubling of distance.

All calculated Management Levels are identified in Table 3 on the following page.

**Table 3. Calculated Noise Management Levels.**

LOCATION	RECEPTOR	MANAGEMENT LEVELS FOR THE NEAREST RECEPTORS BASED ON THE DISTANCE IN BETWEEN THE LOCATION OF THE WORKS AND THE SOUND LEVEL METER [dB(A)]			
		>86 meters from SLM	86-43 meters from SLM	43-14 meters from SLM	14-6 meters from SLM
001 Adjacent to carpark – NGARA2	Hardy Electrical & Solar (Industrial) 43 meters from the SLM	Day: 75	Day: 81	Day: 87	Day: 93
		>72 meters from SLM	72-36 meters from SLM	36-12 meters from SLM	12-5 meters from SLM
	764 Cudgen Rd, Kingscliff (Residential) 36 meters from the SLM	Day: 73	Day: 79	Day: 85	Day: 91
		Evening: 63	Evening: 69	Evening: 75	Evening: 81
		Night: 57	Night: 63	Night: 69	Night: 75
		Highly Noisy: 75	Highly Noisy: 81	Highly Noisy: 87	Highly Noisy: 93
002 Central location – NGARA1	806 Cudgen Rd, Kingscliff (Residential) 56 meters from the SLM	>112 meters from SLM	112-56 meters from SLM	56-18 meters from SLM	18-8 meters from SLM
		Day: 73	Day: 79	Day: 85	Day: 91
		Evening: 62	Evening: 68	Evening: 74	Evening: 80
		Night: 56	Night: 62	Night: 68	Night: 74
		Highly Noisy: 75	Highly Noisy: 81	Highly Noisy: 87	Highly Noisy: 93
003 Eastern section – NGARA3	64 Cudgen Rd, Kingscliff (Residential)	>94 meters from SLM	94-47 meters from SLM	47-15 meters from SLM	15-7 meters from SLM
		Day: 69	Day: 75	Day: 81	Day: 87
		Evening: 60	Evening: 66	Evening: 72	Evening: 78
		Night: 55	Night: 61	Night: 67	Night: 73
		Highly Noisy: 75	Highly Noisy: 81	Highly Noisy: 87	Highly Noisy: 93
	Tweed Regional Aquatic Centre – Kingscliff (Active recreation area)	>166 meters from SLM	166-83 meters from SLM	83-27 meters from SLM	27-12 meters from SLM
		65 dB(A)	71 dB(A)	77 dB(A)	83 dB(A)

**Note:** Highlighted in yellow are the more restrictive levels.

## 1.5 Survey Instrumentation and Methodology

At all locations, the Sound Level Meter (SLM) was enclosed in a tough case which remained at ground level with an extension pole attached to the case with the microphone mounted on top of the pole. The height of the microphone was approximately 1.5 metres above the ground level.

A wind shield was placed on each microphone to reduce any wind interference during the measurements. The sound meter's microphone is orientated toward the noise sources for all measurements and the area in between the sound level and the noise source was free from any temporary obstacles.

Measurements were carried out since the commencement of the background monitoring on the 26<sup>th</sup> July 2019 and record in all weather conditions.

The primary measurement parameter was the equivalent continuous A-weighted Sound Pressure Level,  $L_{Aeq}$  15. The  $L_{Aeq}$  15 is the average sound level recorded over 15 minutes. The A-weighting is used as it places emphasis on the middle frequencies of the noise spectrum, while putting less emphasis on the higher and lower frequencies. This emulates the way the human ear responds to sound.

An alarm beacon was set-up with the noise monitors in order to alert DLT and the Site Supervisor in the case of an exceedance in real-time. If the alarm was triggered, DLT and the Site Supervisor would receive an email and need to note the date and time, document the activity and consider implementing controls and work practices reviewed before re-commencing works.

Monthly checks of the levels of noise measured by each Sound Level Meters are been carried out to validate the data with a portable sound level calibrator. If the instrumentation system registers a discrepancy equal to or greater than 1 dB between consecutive checks, any measurement in the interval between the two checks will be considered invalid.

## 1.6 Existing Noise Environment

The main noise sources in the area are:

- Construction noise from the site, including trucks moving to and from the site;
- Traffic noise (trucks and cars) from the adjacent roads (Cudgen Road);
- Foot traffic noises from workers/people walking around and past the site; and
- Noises from the workers and mobile plant who use the parking area.

## 1.7 Meteorological Conditions

Measurements under rainy and windy conditions (greater than 18 Km/h) increase the measured levels of noise and when this happens noise levels measured should be reduced 10 dB(A).

Meteorological conditions representative of the site have been provided by the Coolangatta weather station from the Bureau of Meteorology from the Australian Government.

Rain and wind data from the assessed period is attached in the appendix III. Raining and windy periods are highlighted in blue.

### **1.8 Out of Hours Work**

Nil for this period.

### **1.9 Missing Data**

Missing data points were experienced at all locations with varying times and durations throughout the month of March. The reasons range due to weather, errors with equipment or the requirement to dismantle equipment to allow site works to occur. Further explanations are provided below:

- Monitoring location 002 experienced sporadic dropouts due to solar issues over a period between the 5<sup>th</sup> of March to the 13<sup>th</sup> of March 2020. The causation was related to obstruction of the solar panels via overgrown grasses and/or equipment park adjacent to the monitor;
- Monitoring location 003 experienced issues on the 1<sup>st</sup> March. This dropout was as a result of an existing ant infestation within the monitor. A replacement monitor was ordered and was reinstalled at 12.15pm on the 2<sup>nd</sup> of March 2020; and
- Both monitoring locations 001 & 002 did not record data on the 31<sup>st</sup> of March 2020 due to disassembling monitors which needed to be removed to allow tree clearing works to proceed. No alternative locations were deemed viable, the monitors were reinstated when the works were completed.

## **2 RESULTS**

Results from the A-weighted equivalent continuous noise level over a 15-minute period for each monitoring location are shown in the Appendix V. Data from the raining and windy periods is 10 dB(A) lower.

Initially all results are compared through the lowest threshold limit for each location. Then, ADE has requested to our client to provide the distance in between the working location and the position of the sound level meter to determine if a different threshold must be used, considering those periods and the distance provided the following (refer to Tables 4, 5 and 6 on the following pages).

**Table 4. Noise Level Assessment (001 Adjacent to carpark – NGARA2)**

TIME	Distance from the Sound Level Meter					Noise level dB(A) <sub>15 minutes</sub>	Noise Affection Criteria dB(A)	Highly noisy criteria dB(A)	ASSESSMENT
	>72m	72-36m	36-12m	12-5	≥5				
	02/03/2020								
14:15 to 14:30			X			80.1	85	87	Below

**Table 5. Noise Level Assessment (002 Central location – NGARA1)**

TIME	Distance from the Sound Level Meter					Noise level dB(A) <sub>15 minutes</sub>	Noise Affection Criteria dB(A)	Highly noisy criteria dB(A)	ASSESSMENT
	>112m	112-56m	56-18m	18-8	≥8				
	20/03/2020								
12:00 to 12:15				X		78.0	91	93	Below
	31/03/2020								
07:15 to 07:30					X	94.4	91	93	Above Highly Noisy Criteria

**Table 6. Noise Level Assessment (003 Eastern section – NGARA3)**

TIME	Distance from the Sound Level Meter					Noise level dB(A) <sub>15 minutes</sub>	Noise Affection Criteria dB(A)	Highly noisy criteria dB(A)	ASSESSMENT
	>94m	94-47m	47-15m	15-7	≥7				
	02/03/2020								
12:15 to 12:30				X		83.0	87	93	Below
	19/03/2020								
08:45 to 09:00				X		70.5	87	93	Below
09:15 to 09:30				X		70.8	87	93	Below
09:30 to 09:45				X		74.9	87	93	Below
	20/03/2020								
14:00 to 14:15				X		71.5	87	93	Below
14:15 to 14:30				X		74.5	87	93	Below
14:30 to 14:45				X		76.6	87	93	Below
	23/03/2020								
07:45 to 08:00				X		69.4	87	93	Below
	24/03/2020								
09:00 to 09:15				X		74.1	87	93	Below
11:45 to 12:00				X		69.6			
	25/03/2020								
09:45 to 10:00				X		69.4	87	93	Below
	31/03/2020								
12:45 to 13:00				X		89.1	87	93	Below

### 3 DISCUSSION

As mentioned in the Lendlease Building Pty Ltd Tweed Valley Hospital – Management Plan – Noise and Vibration dated 10 December 2019 Revision 7.0, Figure 4 below details the noise management levels of the nearby receivers.

Work Hours					
Comply with approved work hours. Monday to Friday 7:00 am to 6:00 pm; Saturday: 8:00 am to 1:00 pm TO BE CONFIRMED WITH SSD FINAL CONDITIONS	At all times	Identify and communicate approved work hours/days. Plan works and complete within approved hours. Provide notification to the community.	CM/SM	Documented approval received for work outside of approved hours. Monitoring of work outside of approved hours.	Timely approval of work outside of hours. No complaints. No work outside of approved hours without prior impact assessment and approval from the relevant regulatory authority. No fines.
If work needs to be performed due to unforeseen circumstances (e.g. concrete pour) outside the hours nominated, consent from the Department of Planning must be obtained.	At all times	Prior notice and approval from the Department of Planning must be sought.	GF	Continuous as required.	No complaints from public or adjoining residents or authorities.
Provide advanced notification to potentially affected community stakeholders of out of hour's work/deliveries and high noise or vibration activities.	Prior to works commencing	Prepare appropriate information and distribute to the community at least 3 days prior to the works occurring.	CM/SM	Feedback recorded.	No community complaints. Positive relationship established with project neighbours.
Where applicable if work activities involve noisy works, controls measure MUST be detail as part of the Work Method Statement	Prior to works commencing	In accordance with the Noise and Vibration Management Plan.	Contractor	Continuous	Work Method Statement to contain details of schedule of work and equipment being used.
Where applicable, activities that are found to exceed the 75dB (highly affected noise level) at receivers, respite periods (such as three hours on and 1 hour off).	During noisy works.	Regular monitoring to be undertaken and controls addressed during pre-starts and tool box talks if required,	CM/SM	Noise monitoring results. Number of complaints.	No complaints. No exceedances of predicted levels.

MANAGEMENT PLAN - NOISE AND VIBRATION  
ISSUE NO: 2.0 | ISSUE DATE: 30/01/2017 | PROJECT REVISION NO: 00 |  
LENDLEASE BUILDING MANAGEMENT SYSTEM

Page 11 of 18

**Figure 4.** Noise Management Levels of nearby receivers taken from Lendlease Building Pty Ltd Tweed Valley Hospital – Management Plan – Noise and Vibration Revision 7.0 dated 10/12/2019.

A total of one (1) exceedance occurred throughout the month of March. The exceedance occurred at the central monitoring location (002) at 7.15am on the 31<sup>st</sup> of March 2020 over a period of 15 minutes and as such no respite periods were necessary as per the Lendlease Building Pty Ltd Tweed Valley Hospital – Management Plan – Noise and Vibration dated 10 December 2019 Revision 7.0. The exceedance was due to ADE dismantling and removing monitors which needed to be removed to allow tree clearing works to proceed. No alternative locations were deemed viable, the monitors were reinstated when the works were completed.

## 4 CONCLUSION

A total of one (1) exceedance occurred throughout the month of March. The exceedance was due to ADE dismantling and removing monitors which were required to be removed to allow tree clearing works to proceed. Please note, no alternative locations were deemed viable, as such the monitors were reinstated when the works were completed.



## Appendix I

### Aerial Photograph of Monitoring Locations

---

**Sydney Office:**  
ADE Consulting Group Pty Ltd  
Unit 6 / 7 Millennium Court  
Silverwater, NSW 2128

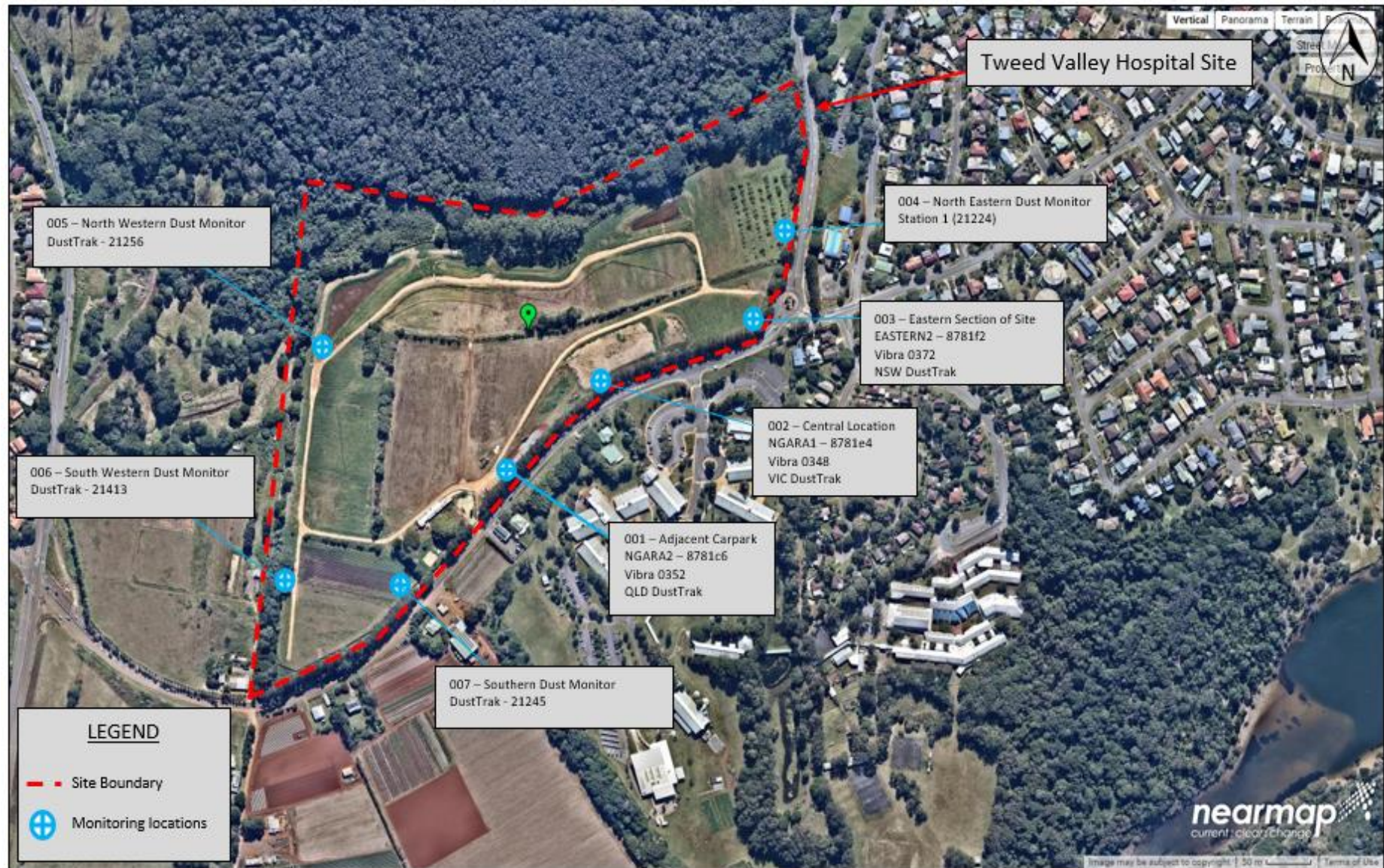
**Melbourne Office:**  
ADE Consulting Group Pty Ltd  
Unit 4 / 95 Salmon Street  
Port Melbourne, VIC 3207

**Newcastle Office:**  
ADE Consulting Group Pty Ltd  
Unit 9 / 103 Glenwood Drive  
Thornton, NSW 2322

**Brisbane Office:**  
ADE Consulting Group Pty Ltd  
Unit 3 / 22 Palmer Place  
Murarrie QLD 4172

**Contact Us:**  
Site: [www.ADE.Group](http://www.ADE.Group)  
Email: [info@ade.group](mailto:info@ade.group)  
Phone: 1300 976 922

Aerial photograph of the DLT works area at Kingscliff



**Sydney Office:**  
ADE Consulting Group Pty Ltd  
Unit 6 / 7 Millennium Court  
Silverwater, NSW 2128

**Melbourne Office:**  
ADE Consulting Group Pty Ltd  
Unit 4 / 95 Salmon Street  
Port Melbourne, VIC 3207

**Newcastle Office:**  
ADE Consulting Group Pty Ltd  
Unit 9 / 103 Glenwood Drive  
Thornton, NSW 2322

**Brisbane Office:**  
ADE Consulting Group Pty Ltd  
Unit 3 / 22 Palmer Place  
Murarrie QLD 4172

**Contact Us:**  
Site: [www.ADE.Group](http://www.ADE.Group)  
Email: [info@ade.group](mailto:info@ade.group)  
Phone: 1300 976 922

## Appendix II

### Monitoring Locations

---

**Sydney Office:**  
ADE Consulting Group Pty Ltd  
Unit 6 / 7 Millennium Court  
Silverwater, NSW 2128

**Melbourne Office:**  
ADE Consulting Group Pty Ltd  
Unit 4 / 95 Salmon Street  
Port Melbourne, VIC 3207

**Newcastle Office:**  
ADE Consulting Group Pty Ltd  
Unit 9 / 103 Glenwood Drive  
Thornton, NSW 2322

**Brisbane Office:**  
ADE Consulting Group Pty Ltd  
Unit 3 / 22 Palmer Place  
Murarrie QLD 4172

**Contact Us:**  
Site: [www.ADE.Group](http://www.ADE.Group)  
Email: [info@ade.group](mailto:info@ade.group)  
Phone: 1300 976 922





**Photograph 1.** Representative photo of the monitoring location 001 – Adjacent Carpark location, as observed on the 13.03.2020.

**Sydney Office:**  
ADE Consulting Group Pty Ltd  
Unit 6 / 7 Millennium Court  
Silverwater, NSW 2128

**Melbourne Office:**  
ADE Consulting Group Pty Ltd  
Unit 4 / 95 Salmon Street  
Port Melbourne, VIC 3207

**Newcastle Office:**  
ADE Consulting Group Pty Ltd  
Unit 9 / 103 Glenwood Drive  
Thornton, NSW 2322

**Brisbane Office:**  
ADE Consulting Group Pty Ltd  
Unit 3 / 22 Palmer Place  
Murarrie QLD 4172

**Contact Us:**  
Site: [www.ADE.Group](http://www.ADE.Group)  
Email: [info@ade-group](mailto:info@ade-group)  
Phone: 1300 976 922





**Photograph 2.** Representative photo of the monitoring location 002 – Central location, as observed on the 13.03.2020.

**Sydney Office:**  
ADE Consulting Group Pty Ltd  
Unit 6 / 7 Millennium Court  
Silverwater, NSW 2128

**Melbourne Office:**  
ADE Consulting Group Pty Ltd  
Unit 4 / 95 Salmon Street  
Port Melbourne, VIC 3207

**Newcastle Office:**  
ADE Consulting Group Pty Ltd  
Unit 9 / 103 Glenwood Drive  
Thornton, NSW 2322

**Brisbane Office:**  
ADE Consulting Group Pty Ltd  
Unit 3 / 22 Palmer Place  
Murarrie QLD 4172

**Contact Us:**  
Site: [www.ADE.Group](http://www.ADE.Group)  
Email: [info@ade\\_group](mailto:info@ade_group)  
Phone: 1300 976 922





**Photograph 3.** Representative photo of the monitoring location 003 – Eastern Section of Site, as observed on the 13.03.2020.

**Sydney Office:**  
ADE Consulting Group Pty Ltd  
Unit 6 / 7 Millennium Court  
Silverwater, NSW 2128

**Melbourne Office:**  
ADE Consulting Group Pty Ltd  
Unit 4 / 95 Salmon Street  
Port Melbourne, VIC 3207

**Newcastle Office:**  
ADE Consulting Group Pty Ltd  
Unit 9 / 103 Glenwood Drive  
Thornton, NSW 2322

**Brisbane Office:**  
ADE Consulting Group Pty Ltd  
Unit 3 / 22 Palmer Place  
Murarrie QLD 4172

**Contact Us:**  
Site: [www.ADE.Group](http://www.ADE.Group)  
Email: [info@ade\\_group](mailto:info@ade_group)  
Phone: 1300 976 922

## Appendix III

Rain and windy conditions

# WIND

	Sun
	1/03/2020
00:00 to 00:15	8.9
00:15 to 00:30	8.9
00:30 to 00:45	10.2
00:45 to 01:00	10.2
01:00 to 01:15	10.7
01:15 to 01:30	10.7
01:30 to 01:45	9.4
01:45 to 02:00	9.4
02:00 to 02:15	8.8
02:15 to 02:30	8.8
02:30 to 02:45	9.9
02:45 to 03:00	9.9
03:00 to 03:15	7.2
03:15 to 03:30	7.2
03:30 to 03:45	10.2
03:45 to 04:00	10.2
04:00 to 04:15	10.4
04:15 to 04:30	10.4
04:30 to 04:45	9.9
04:45 to 05:00	9.9
05:00 to 05:15	9.7
05:15 to 05:30	9.7
05:30 to 05:45	10.6
05:45 to 06:00	10.6
06:00 to 06:15	11.6
06:15 to 06:30	11.6
06:30 to 06:45	10.3
06:45 to 07:00	10.3
07:00 to 07:15	11
07:15 to 07:30	11
07:30 to 07:45	11.9
07:45 to 08:00	11.9
08:00 to 08:15	13.2
08:15 to 08:30	13.2
08:30 to 08:45	16.4
08:45 to 09:00	16.4
09:00 to 09:15	16.6
09:15 to 09:30	16.6
09:30 to 09:45	16.4
09:45 to 10:00	16.4
10:00 to 10:15	16.9
10:15 to 10:30	16.9
10:30 to 10:45	17.4
10:45 to 11:00	17.4
11:00 to 11:15	13.9
11:15 to 11:30	13.9
11:30 to 11:45	14.2
11:45 to 12:00	14.2
12:00 to 12:15	18.4
12:15 to 12:30	18.4
12:30 to 12:45	20.9
12:45 to 13:00	20.9
13:00 to 13:15	22.3
13:15 to 13:30	22.3
13:30 to 13:45	24.2
13:45 to 14:00	24.2
14:00 to 14:15	24.5
14:15 to 14:30	24.5
14:30 to 14:45	23.6
14:45 to 15:00	23.6
15:00 to 15:15	21.7
15:15 to 15:30	21.7
15:30 to 15:45	19.2
15:45 to 16:00	19.2
16:00 to 16:15	15.7
16:15 to 16:30	15.7
16:30 to 16:45	16.3
16:45 to 17:00	16.3
17:00 to 17:15	14.5
17:15 to 17:30	14.5
17:30 to 17:45	13.9
17:45 to 18:00	13.9
18:00 to 18:15	13.4
18:15 to 18:30	13.4
18:30 to 18:45	11.6
18:45 to 19:00	11.6
19:00 to 19:15	12.5
19:15 to 19:30	12.5
19:30 to 19:45	10.9
19:45 to 20:00	10.9
20:00 to 20:15	9.7
20:15 to 20:30	9.7
20:30 to 20:45	7.5
20:45 to 21:00	7.5
21:00 to 21:15	5.6
21:15 to 21:30	5.6
21:30 to 21:45	2.1
21:45 to 22:00	2.1
22:00 to 22:15	6.3
22:15 to 22:30	6.3
22:30 to 22:45	7.5
22:45 to 23:00	7.5
23:00 to 23:15	7.2
23:15 to 23:30	7.2
23:30 to 23:45	7.9
23:45 to 00:00	7.9



# WIND

	Mon	Tue	Wed	Thu	Fri	Sat	Sun
	2/03/2020	3/03/2020	4/03/2020	5/03/2020	6/03/2020	7/03/2020	8/03/2020
00:00 to 00:15	7.5	8.8	21.7	23.2	11.7	3.3	13.6
00:15 to 00:30	7.5	8.8	21.7	23.2	11.7	3.3	13.6
00:30 to 00:45	8.2	9.3	23.6	22.2	13.3	5.6	16.7
00:45 to 01:00	8.2	9.3	23.6	22.2	13.3	5.6	16.7
01:00 to 01:15	7.2	9.4	21.9	21	13.5	6	22.2
01:15 to 01:30	7.2	9.4	21.9	21	13.5	6	22.2
01:30 to 01:45	8.7	9.2	24.8	21.9	15.2	7.1	23.5
01:45 to 02:00	8.7	9.2	24.8	21.9	15.2	7.1	23.5
02:00 to 02:15	8.9	8.2	22.6	23.2	13.8	7.2	23.4
02:15 to 02:30	8.9	8.2	22.6	23.2	13.8	7.2	23.4
02:30 to 02:45	8.6	10.2	21.9	21.1	15.8	7.5	19.1
02:45 to 03:00	8.6	10.2	21.9	21.1	15.8	7.5	19.1
03:00 to 03:15	10.5	10.4	20.1	20.6	14.1	5.6	17
03:15 to 03:30	10.5	10.4	20.1	20.6	14.1	5.6	17
03:30 to 03:45	11.2	10.6	19.6	21.2	12.2	3.7	17.8
03:45 to 04:00	11.2	10.6	19.6	21.2	12.2	3.7	17.8
04:00 to 04:15	10.1	11.4	21.8	20.9	10.6	0	18.4
04:15 to 04:30	10.1	11.4	21.8	20.9	10.6	0	18.4
04:30 to 04:45	8.4	10.5	21.3	20.4	9.6	6.7	18.1
04:45 to 05:00	8.4	10.5	21.3	20.4	9.6	6.7	18.1
05:00 to 05:15	5.6	10	21.9	22.6	7.5	13.6	15.7
05:15 to 05:30	5.6	10	21.9	22.6	7.5	13.6	15.7
05:30 to 05:45	3.6	8.3	22.6	23.3	5.9	12.5	16.7
05:45 to 06:00	3.6	8.3	22.6	23.3	5.9	12.5	16.7
06:00 to 06:15	2.2	6	24.2	21.9	6	10.9	16.8
06:15 to 06:30	2.2	6	24.2	21.9	6	10.9	16.8
06:30 to 06:45	2.7	7.2	23.4	22.6	8.6	12.5	16.6
06:45 to 07:00	2.7	7.2	23.4	22.6	8.6	12.5	16.6
07:00 to 07:15	0	8.3	24.6	20.7	8.3	15.5	17.2
07:15 to 07:30	0	8.3	24.6	20.7	8.3	15.5	17.2
07:30 to 07:45	0.2	7.2	24	22.1	9.1	17.5	18.5
07:45 to 08:00	0.2	7.2	24	22.1	9.1	17.5	18.5
08:00 to 08:15	3.6	6.1	24.9	22.7	10.6	21.9	20.5
08:15 to 08:30	3.6	6.1	24.9	22.7	10.6	21.9	20.5
08:30 to 08:45	9.5	10.6	29	22.6	11.2	22	21.6
08:45 to 09:00	9.5	10.6	29	22.6	11.2	22	21.6
09:00 to 09:15	13.4	6.5	29.2	22.8	9.4	20.5	20.7
09:15 to 09:30	13.4	6.5	29.2	22.8	9.4	20.5	20.7
09:30 to 09:45	14.2	10.2	27.1	22.6	11.4	21.8	23.9
09:45 to 10:00	14.2	10.2	27.1	22.6	11.4	21.8	23.9
10:00 to 10:15	15.3	13.9	29.4	23.5	14.1	25.8	23.9
10:15 to 10:30	15.3	13.9	29.4	23.5	14.1	25.8	23.9
10:30 to 10:45	15.8	14.4	22.4	24.4	17.4	29.5	26.3
10:45 to 11:00	15.8	14.4	22.4	24.4	17.4	29.5	26.3
11:00 to 11:15	16.9	15.2	18.8	25	18.1	27.6	28.6
11:15 to 11:30	16.9	15.2	18.8	25	18.1	27.6	28.6
11:30 to 11:45	18.6	17.4	9	24.7	19.4	29.6	26.9
11:45 to 12:00	18.6	17.4	9	24.7	19.4	29.6	26.9
12:00 to 12:15	19.9	19.2	20	23.3	19.1	28.8	29.6
12:15 to 12:30	19.9	19.2	20	23.3	19.1	28.8	29.6
12:30 to 12:45	21.4	17.6	21.9	24.8	22.7	30.6	27.6
12:45 to 13:00	21.4	17.6	21.9	24.8	22.7	30.6	27.6
13:00 to 13:15	23	19.6	19.8	25.6	20.9	32.7	28.2
13:15 to 13:30	23	19.6	19.8	25.6	20.9	32.7	28.2
13:30 to 13:45	21.8	22	22.8	23.8	21.2	30.3	28.9
13:45 to 14:00	21.8	22	22.8	23.8	21.2	30.3	28.9
14:00 to 14:15	21.8	23.6	18.8	23.4	24.7	30.8	27.9
14:15 to 14:30	21.8	23.6	18.8	23.4	24.7	30.8	27.9
14:30 to 14:45	19.8	22.8	13.5	22.6	26.9	33.8	27.3
14:45 to 15:00	19.8	22.8	13.5	22.6	26.9	33.8	27.3
15:00 to 15:15	19.2	22.2	13.6	23.7	25.5	31.1	27.5
15:15 to 15:30	19.2	22.2	13.6	23.7	25.5	31.1	27.5
15:30 to 15:45	20.4	22.9	12.6	22.9	25.6	32.9	26.8
15:45 to 16:00	20.4	22.9	12.6	22.9	25.6	32.9	26.8
16:00 to 16:15	17.2	23.2	19.2	22.1	26.7	37.4	25.9
16:15 to 16:30	17.2	23.2	19.2	22.1	26.7	37.4	25.9
16:30 to 16:45	18.3	28.5	19	21.1	25.8	32.8	24.5
16:45 to 17:00	18.3	28.5	19	21.1	25.8	32.8	24.5
17:00 to 17:15	16.6	25	12.9	20.1	20.8	32.8	25.8
17:15 to 17:30	16.6	25	12.9	20.1	20.8	32.8	25.8
17:30 to 17:45	15.8	25.1	16.1	19.8	16.7	27.9	23.1
17:45 to 18:00	15.8	25.1	16.1	19.8	16.7	27.9	23.1
18:00 to 18:15	16	20	17.7	19.4	20.2	28.2	21
18:15 to 18:30	16	20	17.7	19.4	20.2	28.2	21
18:30 to 18:45	16.4	21.6	18	19.8	16.9	28	18.6
18:45 to 19:00	16.4	21.6	18	19.8	16.9	28	18.6
19:00 to 19:15	18.8	16.9	16.5	18.8	13.7	25.5	15.7
19:15 to 19:30	18.8	16.9	16.5	18.8	13.7	25.5	15.7
19:30 to 19:45	18.9	16.3	18.7	18.4	11.5	20.2	16.2
19:45 to 20:00	18.9	16.3	18.7	18.4	11.5	20.2	16.2
20:00 to 20:15	19.6	25.7	19.4	19.9	7.4	21.3	17.6
20:15 to 20:30	19.6	25.7	19.4	19.9	7.4	21.3	17.6
20:30 to 20:45	20.5	11.7	17.7	17.8	1	19.9	15.2
20:45 to 21:00	20.5	11.7	17.7	17.8	1	19.9	15.2
21:00 to 21:15	15.1	12.9	16.7	18.8	5.8	19.5	17.4
21:15 to 21:30	15.1	12.9	16.7	18.8	5.8	19.5	17.4
21:30 to 21:45	9.7	19	20	17.2	5.4	18	21.1
21:45 to 22:00	9.7	19	20	17.2	5.4	18	21.1
22:00 to 22:15	8.6	17.9	17.7	8.9	7.3	17.7	18.8
22:15 to 22:30	8.6	17.9	17.7	8.9	7.3	17.7	18.8
22:30 to 22:45	9.1	17.3	17.9	10.2	7.9	17.7	17.1
22:45 to 23:00	9.1	17.3	17.9	10.2	7.9	17.7	17.1
23:00 to 23:15	9.5	13.8	18.1	8.9	7.4	18	18
23:15 to 23:30	9.5	13.8	18.1	8.9	7.4	18	18
23:30 to 23:45	7.4	22.8	20.2	10.5	5.7	16.6	18.1
23:45 to 00:00	7.4	22.8	20.2	10.5	5.7	16.6	18.1

# WIND

	Mon	Tue	Wed	Thu	Fri	Sat	Sun
	9/03/2020	10/03/2020	11/03/2020	12/03/2020	13/03/2020	14/03/2020	15/03/2020
00:00 to 00:15	16.8	20.4	14.8	18.7	12.4	15.1	18
00:15 to 00:30	16.8	20.4	14.8	18.7	12.4	15.1	18
00:30 to 00:45	10.9	22.2	14.9	14.9	10.7	14.1	17.5
00:45 to 01:00	10.9	22.2	14.9	14.9	10.7	14.1	17.5
01:00 to 01:15	13.2	20.5	17.1	14.9	9.3	13.7	16.3
01:15 to 01:30	13.2	20.5	17.1	14.9	9.3	13.7	16.3
01:30 to 01:45	12.8	20	17.7	18.6	15.9	10.5	17.4
01:45 to 02:00	12.8	20	17.7	18.6	15.9	10.5	17.4
02:00 to 02:15	11.9	19.4	16.1	13.6	15.3	10.1	17.7
02:15 to 02:30	11.9	19.4	16.1	13.6	15.3	10.1	17.7
02:30 to 02:45	11.2	18.7	15.4	16.2	15	15.3	18.7
02:45 to 03:00	11.2	18.7	15.4	16.2	15	15.3	18.7
03:00 to 03:15	9.4	17.7	17.6	17	14	14.8	18.2
03:15 to 03:30	9.4	17.7	17.6	17	14	14.8	18.2
03:30 to 03:45	13.5	17.7	15.9	16	13.1	13.5	18.9
03:45 to 04:00	13.5	17.7	15.9	16	13.1	13.5	18.9
04:00 to 04:15	16.5	14.8	17	17	17	14.2	18.7
04:15 to 04:30	16.5	14.8	17	17	17	14.2	18.7
04:30 to 04:45	14.6	14.8	17	15.1	15.2	14.4	21.4
04:45 to 05:00	14.6	14.8	17	15.1	15.2	14.4	21.4
05:00 to 05:15	14.1	12.5	13.1	14.9	16.2	15.5	23.5
05:15 to 05:30	14.1	12.5	13.1	14.9	16.2	15.5	23.5
05:30 to 05:45	12.1	11.8	15.2	16.8	16.1	15.6	24.8
05:45 to 06:00	12.1	11.8	15.2	16.8	16.1	15.6	24.8
06:00 to 06:15	14.6	13.3	11.5	19.3	14	17.3	24.2
06:15 to 06:30	14.6	13.3	11.5	19.3	14	17.3	24.2
06:30 to 06:45	16.3	16	18.3	18.1	14.9	18	25.2
06:45 to 07:00	16.3	16	18.3	18.1	14.9	18	25.2
07:00 to 07:15	16.8	16.5	18.2	18.8	14.9	17.4	24.7
07:15 to 07:30	16.8	16.5	18.2	18.8	14.9	17.4	24.7
07:30 to 07:45	17.6	10.5	16.1	17.7	13.3	18.4	24.2
07:45 to 08:00	17.6	10.5	16.1	17.7	13.3	18.4	24.2
08:00 to 08:15	17.7	4.4	18.5	19.6	16.1	18.6	25.5
08:15 to 08:30	17.7	4.4	18.5	19.6	16.1	18.6	25.5
08:30 to 08:45	15	8.7	20	22.1	17.5	20.7	23.7
08:45 to 09:00	15	8.7	20	22.1	17.5	20.7	23.7
09:00 to 09:15	14.9	13.5	28	21.3	18.7	21.2	22.9
09:15 to 09:30	14.9	13.5	28	21.3	18.7	21.2	22.9
09:30 to 09:45	14.4	12.1	27.2	20.4	19.4	26	24.2
09:45 to 10:00	14.4	12.1	27.2	20.4	19.4	26	24.2
10:00 to 10:15	13.1	17.2	31.2	17.9	20.3	26.3	31.3
10:15 to 10:30	13.1	17.2	31.2	17.9	20.3	26.3	31.3
10:30 to 10:45	12.4	20.5	28.9	15.7	19.6	22.7	29.7
10:45 to 11:00	12.4	20.5	28.9	15.7	19.6	22.7	29.7
11:00 to 11:15	11.8	17.2	30.8	18.6	22.2	23.1	29.5
11:15 to 11:30	11.8	17.2	30.8	18.6	22.2	23.1	29.5
11:30 to 11:45	14.4	13	29.6	23.8	23.5	22.1	30.8
11:45 to 12:00	14.4	13	29.6	23.8	23.5	22.1	30.8
12:00 to 12:15	13.2	22.3	29.5	26.3	26.4	24.9	32.2
12:15 to 12:30	13.2	22.3	29.5	26.3	26.4	24.9	32.2
12:30 to 12:45	11.6	15.5	32	31	27.3	25.6	32.6
12:45 to 13:00	11.6	15.5	32	31	27.3	25.6	32.6
13:00 to 13:15	16.6	17.5	34.6	28.4	30.8	29.5	35.1
13:15 to 13:30	16.6	17.5	34.6	28.4	30.8	29.5	35.1
13:30 to 13:45	22.6	15.6	36.8	22.9	29.7	36.1	34.3
13:45 to 14:00	22.6	15.6	36.8	22.9	29.7	36.1	34.3
14:00 to 14:15	16.8	13.3	34.1	22.7	28.7	33.2	36.4
14:15 to 14:30	16.8	13.3	34.1	22.7	28.7	33.2	36.4
14:30 to 14:45	16.2	12.8	32.5	22.6	28.5	33.4	35.2
14:45 to 15:00	16.2	12.8	32.5	22.6	28.5	33.4	35.2
15:00 to 15:15	17.7	22.8	34.3	27.1	29.7	31.8	33.2
15:15 to 15:30	17.7	22.8	34.3	27.1	29.7	31.8	33.2
15:30 to 15:45	17.9	23.3	32.6	23.1	28.6	31.8	34.6
15:45 to 16:00	17.9	23.3	32.6	23.1	28.6	31.8	34.6
16:00 to 16:15	28.4	16	35	21.5	23.6	30.7	32.8
16:15 to 16:30	28.4	16	35	21.5	23.6	30.7	32.8
16:30 to 16:45	18.8	17.2	33.1	21.6	25.3	32.5	30.3
16:45 to 17:00	18.8	17.2	33.1	21.6	25.3	32.5	30.3
17:00 to 17:15	16.9	17.1	29.1	19.9	25.7	29.2	32.2
17:15 to 17:30	16.9	17.1	29.1	19.9	25.7	29.2	32.2
17:30 to 17:45	16.9	13.6	28.8	20.1	25.3	24.8	29.1
17:45 to 18:00	16.9	13.6	28.8	20.1	25.3	24.8	29.1
18:00 to 18:15	21.9	13.1	26.4	14.4	23.7	21.8	33
18:15 to 18:30	21.9	13.1	26.4	14.4	23.7	21.8	33
18:30 to 18:45	15.6	11.3	20.7	17.9	23	22.2	27.2
18:45 to 19:00	15.6	11.3	20.7	17.9	23	22.2	27.2
19:00 to 19:15	15.6	13.2	18.6	20.7	18	21	23.7
19:15 to 19:30	15.6	13.2	18.6	20.7	18	21	23.7
19:30 to 19:45	20	12.8	19.5	18	14.4	21.5	27.9
19:45 to 20:00	20	12.8	19.5	18	14.4	21.5	27.9
20:00 to 20:15	16.6	11.3	20	16.9	12.6	20.8	31.3
20:15 to 20:30	16.6	11.3	20	16.9	12.6	20.8	31.3
20:30 to 20:45	16.2	12.9	19.6	15.2	12.1	23.1	23.9
20:45 to 21:00	16.2	12.9	19.6	15.2	12.1	23.1	23.9
21:00 to 21:15	15.4	13.6	20.1	17.5	13.2	21.9	28
21:15 to 21:30	15.4	13.6	20.1	17.5	13.2	21.9	28
21:30 to 21:45	15.8	13.5	15.1	16.9	12.9	17.7	26.9
21:45 to 22:00	15.8	13.5	15.1	16.9	12.9	17.7	26.9
22:00 to 22:15	18.4	14.2	18.7	12.3	13.4	18.3	24.7
22:15 to 22:30	18.4	14.2	18.7	12.3	13.4	18.3	24.7
22:30 to 22:45	20.1	13.6	18.1	9.7	13.8	17.2	27.1
22:45 to 23:00	20.1	13.6	18.1	9.7	13.8	17.2	27.1
23:00 to 23:15	19.2	14.2	15.3	11.2	13.4	17.7	26.1
23:15 to 23:30	19.2	14.2	15.3	11.2	13.4	17.7	26.1
23:30 to 23:45	17.1	14.6	16.8	12.1	16.3	18.4	29.5
23:45 to 00:00	17.1	14.6	16.8	12.1	16.3	18.4	29.5

# WIND

	Mon	Tue	Wed	Thu	Fri	Sat	Sun
	16/03/2020	17/03/2020	18/03/2020	19/03/2020	20/03/2020	21/03/2020	22/03/2020
00:00 to 00:15	27.2	16.9	17.6	6.9	1.6	12.5	12.5
00:15 to 00:30	27.2	16.9	17.6	6.9	1.6	12.5	12.5
00:30 to 00:45	29.3	17.1	16.3	7.8	1.7	12.3	12.4
00:45 to 01:00	29.3	17.1	16.3	7.8	1.7	12.3	12.4
01:00 to 01:15	27.7	15.8	16.6	6.1	4.7	12.8	12.3
01:15 to 01:30	27.7	15.8	16.6	6.1	4.7	12.8	12.3
01:30 to 01:45	26.8	16.4	20	6.6	2	14.4	11.1
01:45 to 02:00	26.8	16.4	20	6.6	2	14.4	11.1
02:00 to 02:15	26.8	16.2	17.9	7.5	2.7	12.7	11.1
02:15 to 02:30	26.8	16.2	17.9	7.5	2.7	12.7	11.1
02:30 to 02:45	26.6	16	17.1	4.8	0.7	12.7	9.4
02:45 to 03:00	26.6	16	17.1	4.8	0.7	12.7	9.4
03:00 to 03:15	29.7	15.3	19	0.2	0.2	12.3	9.1
03:15 to 03:30	29.7	15.3	19	0.2	0.2	12.3	9.1
03:30 to 03:45	25.9	15	18	0	0	10.9	10.4
03:45 to 04:00	25.9	15	18	0	0	10.9	10.4
04:00 to 04:15	28.7	15.5	17.9	4.1	3.4	11.8	11.4
04:15 to 04:30	28.7	15.5	17.9	4.1	3.4	11.8	11.4
04:30 to 04:45	31.7	17.1	16.2	1.1	2.1	13	11.8
04:45 to 05:00	31.7	17.1	16.2	1.1	2.1	13	11.8
05:00 to 05:15	25.9	17.8	16.4	3.4	2.8	10.9	11.3
05:15 to 05:30	25.9	17.8	16.4	3.4	2.8	10.9	11.3
05:30 to 05:45	25.4	19.2	17.1	8.8	1.2	10.3	10.1
05:45 to 06:00	25.4	19.2	17.1	8.8	1.2	10.3	10.1
06:00 to 06:15	24.8	21.2	18.3	7.1	4.8	10	7.8
06:15 to 06:30	24.8	21.2	18.3	7.1	4.8	10	7.8
06:30 to 06:45	24	22.7	19.5	7.6	3.5	9.7	9.8
06:45 to 07:00	24	22.7	19.5	7.6	3.5	9.7	9.8
07:00 to 07:15	25.6	20.2	19.3	9.4	6.6	8.2	11.9
07:15 to 07:30	25.6	20.2	19.3	9.4	6.6	8.2	11.9
07:30 to 07:45	26.3	21.9	19.6	7.5	7.1	9	11.8
07:45 to 08:00	26.3	21.9	19.6	7.5	7.1	9	11.8
08:00 to 08:15	25.7	24.4	21.4	13.1	8.9	10.1	12.4
08:15 to 08:30	25.7	24.4	21.4	13.1	8.9	10.1	12.4
08:30 to 08:45	24.9	21.9	23.1	12.8	11.2	9.1	11.2
08:45 to 09:00	24.9	21.9	23.1	12.8	11.2	9.1	11.2
09:00 to 09:15	24.8	21.7	24.2	15.9	12.4	7.5	9.1
09:15 to 09:30	24.8	21.7	24.2	15.9	12.4	7.5	9.1
09:30 to 09:45	25.1	23.2	23.9	14.2	13.9	10.7	12.5
09:45 to 10:00	25.1	23.2	23.9	14.2	13.9	10.7	12.5
10:00 to 10:15	30.1	22	25.8	12.9	17	9.5	11
10:15 to 10:30	30.1	22	25.8	12.9	17	9.5	11
10:30 to 10:45	33.7	30.4	24	10.5	18.9	7.4	5.2
10:45 to 11:00	33.7	30.4	24	10.5	18.9	7.4	5.2
11:00 to 11:15	33.4	27.9	26.1	10.4	20.1	11.8	12.5
11:15 to 11:30	33.4	27.9	26.1	10.4	20.1	11.8	12.5
11:30 to 11:45	32.4	30.6	23	10	21.3	13.7	16.1
11:45 to 12:00	32.4	30.6	23	10	21.3	13.7	16.1
12:00 to 12:15	30.6	31.5	25.5	18.4	23.1	17.2	17
12:15 to 12:30	30.6	31.5	25.5	18.4	23.1	17.2	17
12:30 to 12:45	32.2	33	22.9	18.8	23	25.7	17.7
12:45 to 13:00	32.2	33	22.9	18.8	23	25.7	17.7
13:00 to 13:15	37.1	34.3	27.5	19.6	25.2	27.4	19.1
13:15 to 13:30	37.1	34.3	27.5	19.6	25.2	27.4	19.1
13:30 to 13:45	31.8	30.9	28.6	19.2	24.6	30.2	18.7
13:45 to 14:00	31.8	30.9	28.6	19.2	24.6	30.2	18.7
14:00 to 14:15	31.1	29.1	30.2	19.2	25.7	29.1	18.5
14:15 to 14:30	31.1	29.1	30.2	19.2	25.7	29.1	18.5
14:30 to 14:45	29.5	32.2	30.6	17.8	26.1	31.5	16
14:45 to 15:00	29.5	32.2	30.6	17.8	26.1	31.5	16
15:00 to 15:15	31.1	28.3	30.6	17.4	26.6	32.9	16.8
15:15 to 15:30	31.1	28.3	30.6	17.4	26.6	32.9	16.8
15:30 to 15:45	30.3	33.9	32.1	15.9	26.1	35.5	17.6
15:45 to 16:00	30.3	33.9	32.1	15.9	26.1	35.5	17.6
16:00 to 16:15	29.6	31.3	30.5	15.3	24.8	31.7	16.6
16:15 to 16:30	29.6	31.3	30.5	15.3	24.8	31.7	16.6
16:30 to 16:45	25.4	32.9	25.3	14.9	25.6	31.8	15.3
16:45 to 17:00	25.4	32.9	25.3	14.9	25.6	31.8	15.3
17:00 to 17:15	23.5	24	25.6	15.2	24.4	26.4	17.5
17:15 to 17:30	23.5	24	25.6	15.2	24.4	26.4	17.5
17:30 to 17:45	30.9	19.4	20.3	13.4	23.7	23	17
17:45 to 18:00	30.9	19.4	20.3	13.4	23.7	23	17
18:00 to 18:15	21.5	22.4	17.4	10.1	23.2	18.6	18
18:15 to 18:30	21.5	22.4	17.4	10.1	23.2	18.6	18
18:30 to 18:45	22.3	19.8	14.7	8	22.8	19	20.2
18:45 to 19:00	22.3	19.8	14.7	8	22.8	19	20.2
19:00 to 19:15	22.8	17.9	12.4	6.7	24.7	15.9	19.1
19:15 to 19:30	22.8	17.9	12.4	6.7	24.7	15.9	19.1
19:30 to 19:45	22.8	19	12.8	9.8	22.8	14.5	18
19:45 to 20:00	22.8	19	12.8	9.8	22.8	14.5	18
20:00 to 20:15	14.3	18.2	12.4	10.3	23.1	13.2	18.3
20:15 to 20:30	14.3	18.2	12.4	10.3	23.1	13.2	18.3
20:30 to 20:45	19.7	22.4	11.9	9.9	14.1	12.1	15.9
20:45 to 21:00	19.7	22.4	11.9	9.9	14.1	12.1	15.9
21:00 to 21:15	14.2	22.8	11.3	10	11.9	11.8	12.1
21:15 to 21:30	14.2	22.8	11.3	10	11.9	11.8	12.1
21:30 to 21:45	19.8	20.2	9	8.4	11.9	13.7	12.1
21:45 to 22:00	19.8	20.2	9	8.4	11.9	13.7	12.1
22:00 to 22:15	18.9	19.4	8.4	4.7	11.9	14.2	10.8
22:15 to 22:30	18.9	19.4	8.4	4.7	11.9	14.2	10.8
22:30 to 22:45	18.3	17.7	10.7	2.9	12.2	15.1	11.3
22:45 to 23:00	18.3	17.7	10.7	2.9	12.2	15.1	11.3
23:00 to 23:15	17.7	18.7	8	4.6	13.9	13.7	11.9
23:15 to 23:30	17.7	18.7	8	4.6	13.9	13.7	11.9
23:30 to 23:45	17.3	19.6	8.1	0.8	13.3	13.4	12.8
23:45 to 00:00	17.3	19.6	8.1	0.8	13.3	13.4	12.8

# WIND

	Mon	Tue	Wed	Thu	Fri	Sat	Sun
	23/03/2020	24/03/2020	25/03/2020	26/03/2020	27/03/2020	28/03/2020	29/03/2020
00:00 to 00:15	14.5	9.7	8.8	3.3	17.4	16.8	10
00:15 to 00:30	14.5	9.7	8.8	3.3	17.4	16.8	10
00:30 to 00:45	15.5	10.5	9.5	1.3	15.1	16.7	10.6
00:45 to 01:00	15.5	10.5	9.5	1.3	15.1	16.7	10.6
01:00 to 01:15	14.5	11.5	7.8	4.6	9.4	16.7	6.2
01:15 to 01:30	14.5	11.5	7.8	4.6	9.4	16.7	6.2
01:30 to 01:45	10.8	10.1	7.5	3.4	9.2	17.7	6.7
01:45 to 02:00	10.8	10.1	7.5	3.4	9.2	17.7	6.7
02:00 to 02:15	9.7	12.9	8.3	6.4	9.1	19.7	10.5
02:15 to 02:30	9.7	12.9	8.3	6.4	9.1	19.7	10.5
02:30 to 02:45	3.6	10.3	9.8	5.5	10	20.9	8.2
02:45 to 03:00	3.6	10.3	9.8	5.5	10	20.9	8.2
03:00 to 03:15	1.9	7.6	12.3	1	10.3	20.5	8.8
03:15 to 03:30	1.9	7.6	12.3	1	10.3	20.5	8.8
03:30 to 03:45	2.6	8.2	12.2	4.4	11.5	19.6	7.7
03:45 to 04:00	2.6	8.2	12.2	4.4	11.5	19.6	7.7
04:00 to 04:15	3.4	11.7	13.7	6.1	8.4	19.8	9.5
04:15 to 04:30	3.4	11.7	13.7	6.1	8.4	19.8	9.5
04:30 to 04:45	6.2	12.2	8.8	6.7	11.4	17.7	9.1
04:45 to 05:00	6.2	12.2	8.8	6.7	11.4	17.7	9.1
05:00 to 05:15	0.8	10.7	8.4	2.7	13.8	17.2	8.8
05:15 to 05:30	0.8	10.7	8.4	2.7	13.8	17.2	8.8
05:30 to 05:45	1.6	15	9.6	6.8	12	17.8	8.6
05:45 to 06:00	1.6	15	9.6	6.8	12	17.8	8.6
06:00 to 06:15	8.4	16.7	8.3	0.5	11.5	18.1	10.7
06:15 to 06:30	8.4	16.7	8.3	0.5	11.5	18.1	10.7
06:30 to 06:45	10	10.1	9.3	4	15.4	18.5	9.5
06:45 to 07:00	10	10.1	9.3	4	15.4	18.5	9.5
07:00 to 07:15	12.6	9.9	10.3	8.9	14.3	16.2	9.1
07:15 to 07:30	12.6	9.9	10.3	8.9	14.3	16.2	9.1
07:30 to 07:45	17.1	10.6	10	5.9	16.3	15.1	9.4
07:45 to 08:00	17.1	10.6	10	5.9	16.3	15.1	9.4
08:00 to 08:15	23.1	10.4	9.2	6.2	14	16.5	11.9
08:15 to 08:30	23.1	10.4	9.2	6.2	14	16.5	11.9
08:30 to 08:45	30.3	10	7.2	7.6	14.9	16.5	16.6
08:45 to 09:00	30.3	10	7.2	7.6	14.9	16.5	16.6
09:00 to 09:15	30	8.7	9.4	10.9	15.6	17.9	14.2
09:15 to 09:30	30	8.7	9.4	10.9	15.6	17.9	14.2
09:30 to 09:45	28.8	11.6	9	10	17.1	17.7	11.6
09:45 to 10:00	28.8	11.6	9	10	17.1	17.7	11.6
10:00 to 10:15	27	13.7	8.8	10.8	17.9	16	15.2
10:15 to 10:30	27	13.7	8.8	10.8	17.9	16	15.2
10:30 to 10:45	27	13.9	11.8	11.8	21.1	17.6	14.1
10:45 to 11:00	27	13.9	11.8	11.8	21.1	17.6	14.1
11:00 to 11:15	24.6	13	11.2	10.6	18.6	21.6	14.2
11:15 to 11:30	24.6	13	11.2	10.6	18.6	21.6	14.2
11:30 to 11:45	25.8	13.9	11.3	11.4	17.2	22.3	12.4
11:45 to 12:00	25.8	13.9	11.3	11.4	17.2	22.3	12.4
12:00 to 12:15	25.6	15.1	11	18.3	16.2	19.6	13
12:15 to 12:30	25.6	15.1	11	18.3	16.2	19.6	13
12:30 to 12:45	28	25.9	11	19.7	16.5	18.8	18
12:45 to 13:00	28	25.9	11	19.7	16.5	18.8	18
13:00 to 13:15	33.3	11.2	14.4	20.5	13.8	16.3	20.1
13:15 to 13:30	33.3	11.2	14.4	20.5	13.8	16.3	20.1
13:30 to 13:45	30.9	12.5	14.8	23.2	20	17.9	22.3
13:45 to 14:00	30.9	12.5	14.8	23.2	20	17.9	22.3
14:00 to 14:15	29.3	9.7	13.3	21.3	18.4	15.6	22.5
14:15 to 14:30	29.3	9.7	13.3	21.3	18.4	15.6	22.5
14:30 to 14:45	29.7	12.3	14.3	19.7	17.9	13.2	20.5
14:45 to 15:00	29.7	12.3	14.3	19.7	17.9	13.2	20.5
15:00 to 15:15	26.9	12.8	14	18.2	22.5	17.9	18.3
15:15 to 15:30	26.9	12.8	14	18.2	22.5	17.9	18.3
15:30 to 15:45	22.2	9.2	13.7	18.1	24	22.3	18
15:45 to 16:00	22.2	9.2	13.7	18.1	24	22.3	18
16:00 to 16:15	18.1	11.2	14.6	18.6	23.1	21.5	16.9
16:15 to 16:30	18.1	11.2	14.6	18.6	23.1	21.5	16.9
16:30 to 16:45	19	14.3	13.6	17.7	24.8	22.8	16.6
16:45 to 17:00	19	14.3	13.6	17.7	24.8	22.8	16.6
17:00 to 17:15	19	13.3	12.8	16.6	24	17.1	16.3
17:15 to 17:30	19	13.3	12.8	16.6	24	17.1	16.3
17:30 to 17:45	15.9	8.6	12.1	16.6	17.6	13	14.3
17:45 to 18:00	15.9	8.6	12.1	16.6	17.6	13	14.3
18:00 to 18:15	15	7.9	12.9	15.2	12.8	10.7	14.2
18:15 to 18:30	15	7.9	12.9	15.2	12.8	10.7	14.2
18:30 to 18:45	11.7	12.1	12.2	13.7	15	10.6	8.4
18:45 to 19:00	11.7	12.1	12.2	13.7	15	10.6	8.4
19:00 to 19:15	12.1	11	8.5	10.2	12.1	10.4	6.8
19:15 to 19:30	12.1	11	8.5	10.2	12.1	10.4	6.8
19:30 to 19:45	13.6	9.1	1.6	7.5	13.4	8.9	7.9
19:45 to 20:00	13.6	9.1	1.6	7.5	13.4	8.9	7.9
20:00 to 20:15	14.5	12.3	3.8	15.2	16.7	11.5	7
20:15 to 20:30	14.5	12.3	3.8	15.2	16.7	11.5	7
20:30 to 20:45	15.6	12.8	4.6	14.2	16.3	14.8	8.1
20:45 to 21:00	15.6	12.8	4.6	14.2	16.3	14.8	8.1
21:00 to 21:15	12.7	9.4	8.7	11.6	18.1	15.3	10.3
21:15 to 21:30	12.7	9.4	8.7	11.6	18.1	15.3	10.3
21:30 to 21:45	10.9	10	9.1	11.8	20.6	16	8.2
21:45 to 22:00	10.9	10	9.1	11.8	20.6	16	8.2
22:00 to 22:15	11.5	8.1	8.3	10.3	20.9	16.2	10.1
22:15 to 22:30	11.5	8.1	8.3	10.3	20.9	16.2	10.1
22:30 to 22:45	12.2	13.5	10.9	15.3	18.4	13	8.5
22:45 to 23:00	12.2	13.5	10.9	15.3	18.4	13	8.5
23:00 to 23:15	9.6	18.1	8.3	13.6	16.8	6.1	8.1
23:15 to 23:30	9.6	18.1	8.3	13.6	16.8	6.1	8.1
23:30 to 23:45	12.3	9	0.1	14.3	19.1	2	6.8
23:45 to 00:00	12.3	9	0.1	14.3	19.1	2	6.8

# WIND

	Mon	Tue
	30/03/2020	31/03/2020
00:00 to 00:15	4.7	11.7
00:15 to 00:30	4.7	11.7
00:30 to 00:45	9.4	9.4
00:45 to 01:00	9.4	9.4
01:00 to 01:15	9.6	11.8
01:15 to 01:30	9.6	11.8
01:30 to 01:45	10.5	12.9
01:45 to 02:00	10.5	12.9
02:00 to 02:15	9.7	10.8
02:15 to 02:30	9.7	10.8
02:30 to 02:45	7.7	11.9
02:45 to 03:00	7.7	11.9
03:00 to 03:15	6.9	11.5
03:15 to 03:30	6.9	11.5
03:30 to 03:45	3.3	11.9
03:45 to 04:00	3.3	11.9
04:00 to 04:15	2.9	16.3
04:15 to 04:30	2.9	16.3
04:30 to 04:45	1.6	13.4
04:45 to 05:00	1.6	13.4
05:00 to 05:15	5.7	13.4
05:15 to 05:30	5.7	13.4
05:30 to 05:45	0.8	10.6
05:45 to 06:00	0.8	10.6
06:00 to 06:15	0	12.7
06:15 to 06:30	0	10.9
06:30 to 06:45	3.4	10.9
06:45 to 07:00	3.4	10.6
07:00 to 07:15	0.9	10.6
07:15 to 07:30	0.9	11.4
07:30 to 07:45	6.1	11.4
07:45 to 08:00	6.1	14.9
08:00 to 08:15	5.5	14.9
08:15 to 08:30	5.5	10.1
08:30 to 08:45	3.8	10.1
08:45 to 09:00	3.8	7.6
09:00 to 09:15	8.2	7.6
09:15 to 09:30	8.2	10.6
09:30 to 09:45	10.2	10.6
09:45 to 10:00	10.2	8.4
10:00 to 10:15	12.6	8.4
10:15 to 10:30	12.6	9.4
10:30 to 10:45	15.2	9.4
10:45 to 11:00	15.2	12.8
11:00 to 11:15	15.4	12.8
11:15 to 11:30	15.4	12.1
11:30 to 11:45	17.6	12.1
11:45 to 12:00	17.6	15.6
12:00 to 12:15	17.7	15.6
12:15 to 12:30	17.7	16.6
12:30 to 12:45	18.8	16.6
12:45 to 13:00	18.8	14.2
13:00 to 13:15	19.8	14.2
13:15 to 13:30	19.8	16
13:30 to 13:45	20.6	16
13:45 to 14:00	20.6	20.3
14:00 to 14:15	21.7	20.3
14:15 to 14:30	21.7	19.3
14:30 to 14:45	21.4	19.3
14:45 to 15:00	21.4	22
15:00 to 15:15	21.6	22
15:15 to 15:30	21.6	22.5
15:30 to 15:45	21.3	22.5
15:45 to 16:00	21.3	21.1
16:00 to 16:15	20.7	21.1
16:15 to 16:30	20.7	20.3
16:30 to 16:45	20	20.3
16:45 to 17:00	20	18.7
17:00 to 17:15	18.3	18.7
17:15 to 17:30	18.3	19
17:30 to 17:45	17.9	19
17:45 to 18:00	17.9	14.7
18:00 to 18:15	18.5	14.7
18:15 to 18:30	18.5	15.7
18:30 to 18:45	17.7	15.7
18:45 to 19:00	17.7	14.1
19:00 to 19:15	17.6	14.1
19:15 to 19:30	17.6	11.6
19:30 to 19:45	16	11.6
19:45 to 20:00	16	13.4
20:00 to 20:15	12.2	13.4
20:15 to 20:30	12.2	15.5
20:30 to 20:45	8.5	15.5
20:45 to 21:00	8.5	16.6
21:00 to 21:15	9.2	16.6
21:15 to 21:30	9.2	14
21:30 to 21:45	9.5	14
21:45 to 22:00	9.5	13.1
22:00 to 22:15	9.4	13.1
22:15 to 22:30	9.4	12.7
22:30 to 22:45	9.8	12.7
22:45 to 23:00	9.8	14.5
23:00 to 23:15	9.1	14.5
23:15 to 23:30	9.1	14.2
23:30 to 23:45	9.7	14.2
23:45 to 00:00	9.7	14.2

# RAIN

	Sun
	1/03/2020
00:00 to 00:15	0
00:15 to 00:30	0
00:30 to 00:45	0
00:45 to 01:00	0
01:00 to 01:15	0
01:15 to 01:30	0
01:30 to 01:45	0
01:45 to 02:00	0
02:00 to 02:15	0
02:15 to 02:30	0
02:30 to 02:45	0
02:45 to 03:00	0
03:00 to 03:15	0
03:15 to 03:30	0
03:30 to 03:45	0
03:45 to 04:00	0
04:00 to 04:15	0
04:15 to 04:30	0
04:30 to 04:45	0
04:45 to 05:00	0
05:00 to 05:15	0
05:15 to 05:30	0
05:30 to 05:45	0
05:45 to 06:00	0
06:00 to 06:15	0
06:15 to 06:30	0
06:30 to 06:45	0
06:45 to 07:00	0
07:00 to 07:15	0
07:15 to 07:30	0
07:30 to 07:45	0
07:45 to 08:00	0
08:00 to 08:15	0
08:15 to 08:30	0
08:30 to 08:45	0
08:45 to 09:00	0
09:00 to 09:15	0
09:15 to 09:30	0
09:30 to 09:45	0
09:45 to 10:00	0
10:00 to 10:15	0
10:15 to 10:30	0
10:30 to 10:45	0
10:45 to 11:00	0
11:00 to 11:15	0
11:15 to 11:30	0
11:30 to 11:45	0
11:45 to 12:00	0
12:00 to 12:15	0
12:15 to 12:30	0
12:30 to 12:45	0
12:45 to 13:00	0
13:00 to 13:15	0
13:15 to 13:30	0
13:30 to 13:45	0
13:45 to 14:00	0
14:00 to 14:15	0
14:15 to 14:30	0
14:30 to 14:45	0
14:45 to 15:00	0
15:00 to 15:15	0
15:15 to 15:30	0
15:30 to 15:45	0
15:45 to 16:00	0
16:00 to 16:15	0
16:15 to 16:30	0
16:30 to 16:45	0
16:45 to 17:00	0
17:00 to 17:15	0
17:15 to 17:30	0
17:30 to 17:45	0
17:45 to 18:00	0
18:00 to 18:15	0
18:15 to 18:30	0
18:30 to 18:45	0
18:45 to 19:00	0
19:00 to 19:15	0
19:15 to 19:30	0
19:30 to 19:45	0
19:45 to 20:00	0
20:00 to 20:15	0
20:15 to 20:30	0
20:30 to 20:45	0
20:45 to 21:00	0
21:00 to 21:15	0
21:15 to 21:30	0
21:30 to 21:45	0
21:45 to 22:00	0
22:00 to 22:15	0
22:15 to 22:30	0
22:30 to 22:45	0
22:45 to 23:00	0
23:00 to 23:15	0
23:15 to 23:30	0
23:30 to 23:45	0
23:45 to 00:00	0

# RAIN

	Mon	Tue	Wed	Thu	Fri	Sat	Sun
	2/03/2020	3/03/2020	4/03/2020	5/03/2020	6/03/2020	7/03/2020	8/03/2020
00:00 to 00:15	0	0	0	0	0	0	0
00:15 to 00:30	0	0	0	0	0	0	0
00:30 to 00:45	0	0	0	0	0	0	0
00:45 to 01:00	0	0	0	0	0	0	0
01:00 to 01:15	0	0	0	0.4	0	0	0
01:15 to 01:30	0	0	0	0.4	0	0	0
01:30 to 01:45	0	0	0	0	0	0	0
01:45 to 02:00	0	0	0	0	0	0	0
02:00 to 02:15	0	0	0	0	0	0	0
02:15 to 02:30	0	0	0	0	0	0	0
02:30 to 02:45	0	0	0	0	0	0	0
02:45 to 03:00	0	0	0	0	0	0	0
03:00 to 03:15	0	0	0	0	0	0	0
03:15 to 03:30	0	0	0	0	0	0	0
03:30 to 03:45	0	0	0	0	0	0	0
03:45 to 04:00	0	0	0	0	0	0	0
04:00 to 04:15	0	0	0	0	0.4	0	0
04:15 to 04:30	0	0	0	0	0.4	0	0
04:30 to 04:45	0	0	0	0	0.4	0	0
04:45 to 05:00	0	0	0	0	0.4	0	0
05:00 to 05:15	0	0	0	0	0	0	0
05:15 to 05:30	0	0	0	0	0	0	0
05:30 to 05:45	0	0	0	0	0	0	0
05:45 to 06:00	0	0	0	0	0	0	0
06:00 to 06:15	0	0	0	0	0	0	0
06:15 to 06:30	0	0	0	0	0	0	0
06:30 to 06:45	0	0	0	0	0	0	0
06:45 to 07:00	0	0	0	0	0	0	0
07:00 to 07:15	0	0	0	0	0	0	0
07:15 to 07:30	0	0	0	0	0	0	0
07:30 to 07:45	0	0	0	0	0	0	0
07:45 to 08:00	0	0	0	0	0	0	0
08:00 to 08:15	0	0	0	0	0	0.2	0
08:15 to 08:30	0	0	0	0	0	0.2	0
08:30 to 08:45	0	0	0	0	0	0	0
08:45 to 09:00	0	0	0	0	0	0	0
09:00 to 09:15	0	0	0	0	0	0	0
09:15 to 09:30	0	0	0	0	0	0	0
09:30 to 09:45	0	0	0	0	0	0	0.2
09:45 to 10:00	0	0	0	0	0	0	0.2
10:00 to 10:15	0	0	0	0	0	0	0
10:15 to 10:30	0	0	0	0	0	0	0
10:30 to 10:45	0	0	0.2	0	0	0	0
10:45 to 11:00	0	0	0.2	0	0	0	0
11:00 to 11:15	0	0	1.2	0	0	0	0
11:15 to 11:30	0	0	1.2	0	0	0	0
11:30 to 11:45	0	0	0	0	0	0	0
11:45 to 12:00	0	0	0	0	0	0	0
12:00 to 12:15	0	0	0	0	0	0	0
12:15 to 12:30	0	0	0	0	0	0	0
12:30 to 12:45	0	0	0	0	0	0	0
12:45 to 13:00	0	0	0	0	0	0	0
13:00 to 13:15	0	0	0	0	0	0	0
13:15 to 13:30	0	0	0	0	0	0	0
13:30 to 13:45	0	0	0	0	0	0	0
13:45 to 14:00	0	0	0	0	0	0	0
14:00 to 14:15	0	0	0	0	0	0	0
14:15 to 14:30	0	0	0	0	0	0	0
14:30 to 14:45	0	0	0	0	0	0	0
14:45 to 15:00	0	0	0	0	0	0	0
15:00 to 15:15	0	0	0	0	0	0	0
15:15 to 15:30	0	0	0	0	0	0	0
15:30 to 15:45	0	0	0	0	0	0	0
15:45 to 16:00	0	0	0	0	0	0	0
16:00 to 16:15	0	0	0	0	0	0	0
16:15 to 16:30	0	0	0	0	0	0	0
16:30 to 16:45	0	0	0	0	0	0	0
16:45 to 17:00	0	0	0	0	0	0	0
17:00 to 17:15	0	0	0	0	0	0	0
17:15 to 17:30	0	0	0	0	0	0	0
17:30 to 17:45	0	0	0	0	0	0	0
17:45 to 18:00	0	0	0	0	0	0	0
18:00 to 18:15	0	0	0	0	0	0	0
18:15 to 18:30	0	0	0	0	0	0	0
18:30 to 18:45	0	0	0	0	0	0	0
18:45 to 19:00	0	0	0	0	0	0	0
19:00 to 19:15	0	0	0	0	0	0	0
19:15 to 19:30	0	0	0	0	0	0	0
19:30 to 19:45	0	0	0	0	5.6	0	0
19:45 to 20:00	0	0	0	0	5.6	0	0
20:00 to 20:15	0	5	0	0	0.2	0	0
20:15 to 20:30	0	5	0	0	0.2	0	0
20:30 to 20:45	0	6.6	0	0	0	0	0
20:45 to 21:00	0	6.6	0	0	0	0	0
21:00 to 21:15	0	0	0	0	0	0	0
21:15 to 21:30	0	0	0	0	0	0	0
21:30 to 21:45	0	0	0	0	0	0	0
21:45 to 22:00	0	0	0	0	0	0	0
22:00 to 22:15	0	0	0	0	0	0	0
22:15 to 22:30	0	0	0	0	0	0	0
22:30 to 22:45	0	0	0	0	0	0	0
22:45 to 23:00	0	0	0	0	0	0	0
23:00 to 23:15	0	0	0.6	0	0	0	0
23:15 to 23:30	0	0	0.6	0	0	0	0
23:30 to 23:45	0	0	0	0	0	0	0
23:45 to 00:00	0	0	0	0	0	0	0

# RAIN

	Mon	Tue	Wed	Thu	Fri	Sat	Sun
	9/03/2020	10/03/2020	11/03/2020	12/03/2020	13/03/2020	14/03/2020	15/03/2020
00:00 to 00:15	0	0.2	0	0	0	0	0
00:15 to 00:30	0	0.2	0	0	0	0	0
00:30 to 00:45	0	0.4	0	1.6	0	0	0
00:45 to 01:00	0	0.4	0	1.6	0	0	0
01:00 to 01:15	0	0.4	0	0	0	0	0
01:15 to 01:30	0	0.4	0	0	0	0	0
01:30 to 01:45	0	0.6	0	0	0	0	0
01:45 to 02:00	0	0.6	0	0	0	0	0
02:00 to 02:15	0.2	1.4	0	1.2	0	0	0
02:15 to 02:30	0.2	1.4	0	1.2	0	0	0
02:30 to 02:45	0	0	0	0	0.2	0	0
02:45 to 03:00	0	0	0	0	0.2	0	0
03:00 to 03:15	0	0.2	0	0	0	0	0
03:15 to 03:30	0	0.2	0	0	0	0	0
03:30 to 03:45	0	0	0	0	0	0	0
03:45 to 04:00	0	0	0	0	0	0	0
04:00 to 04:15	0	0	0	0	0	0	0
04:15 to 04:30	0	0	0	0	0	0	0
04:30 to 04:45	0	0.4	0	0	0	0	0
04:45 to 05:00	0	0.4	0	0	0	0	0
05:00 to 05:15	0	0	0	0	0	0	0
05:15 to 05:30	0	0	0	0	0	0	0
05:30 to 05:45	0.8	2.6	1.4	0	0	0	0
05:45 to 06:00	0.8	2.6	1.4	0	0	0	0
06:00 to 06:15	0.2	6.4	0	0	0	0	0
06:15 to 06:30	0.2	6.4	0	0	0	0	0
06:30 to 06:45	0	2	0	0	0.2	0	0
06:45 to 07:00	0	2	0	0	0.2	0	0
07:00 to 07:15	0.4	0.4	0	0	0	0	0
07:15 to 07:30	0.4	0.4	0	0	0	0	0
07:30 to 07:45	0.2	0	0	0	0	0	0
07:45 to 08:00	0.2	0	0	0	0	0	0
08:00 to 08:15	0.2	1.8	0	0	0	0	0
08:15 to 08:30	0.2	1.8	0	0	0	0	0
08:30 to 08:45	0	0.2	0	0	0	0	0
08:45 to 09:00	0	0.2	0	0	0	0	0
09:00 to 09:15	0.6	0	0	0	0	0	0
09:15 to 09:30	0.6	0	0	0	0	0	0
09:30 to 09:45	2.2	0.2	0	2.8	0	0	0
09:45 to 10:00	2.2	0.2	0	2.8	0	0	0
10:00 to 10:15	0	0.2	0	13.4	0	0	0
10:15 to 10:30	0	0.2	0	13.4	0	0	0
10:30 to 10:45	0.4	3.2	0	3.4	0	0	0
10:45 to 11:00	0.4	3.2	0	3.4	0	0	0
11:00 to 11:15	1.8	1.2	0	1.6	0	0	0
11:15 to 11:30	1.8	1.2	0	1.6	0	0	0
11:30 to 11:45	8.2	0	0	4.8	0	0	0
11:45 to 12:00	8.2	0	0	4.8	0	0	0
12:00 to 12:15	6.4	4	0	0	0	0	0
12:15 to 12:30	6.4	4	0	0	0	0	0
12:30 to 12:45	4.4	0	0	0	0	0	0
12:45 to 13:00	4.4	0	0	0	0	0	0
13:00 to 13:15	1.8	0.6	0	0.2	0	0	0
13:15 to 13:30	1.8	0.6	0	0.2	0	0	0
13:30 to 13:45	0.8	0.4	0	0	0	0	0
13:45 to 14:00	0.8	0.4	0	0	0	0	0
14:00 to 14:15	0.2	0	0	0	0	0	0
14:15 to 14:30	0.2	0	0	0	0	0	0
14:30 to 14:45	0	0	0	0	0	0	0
14:45 to 15:00	0	0	0	0	0	0	0
15:00 to 15:15	0.2	0	0	6.2	0	0	0
15:15 to 15:30	0.2	0	0	6.2	0	0	0
15:30 to 15:45	1.6	0	0	1	0	0	1.4
15:45 to 16:00	1.6	0	0	1	0	0	1.4
16:00 to 16:15	1.8	2.8	0	1	0	0	0
16:15 to 16:30	1.8	2.8	0	1	0	0	0
16:30 to 16:45	1.8	6.2	0	1.6	0	0	0
16:45 to 17:00	1.8	6.2	0	1.6	0	0	0
17:00 to 17:15	1	0	0	1.4	0	0	0.4
17:15 to 17:30	1	0	0	1.4	0	0	0.4
17:30 to 17:45	0.8	0.6	0	2.8	0	0	0.6
17:45 to 18:00	0.8	0.6	0	2.8	0	0	0.6
18:00 to 18:15	1	0.2	0	0.2	0	0	6.6
18:15 to 18:30	1	0.2	0	0.2	0	0	6.6
18:30 to 18:45	1.4	0	0	0	0	0	7.2
18:45 to 19:00	1.4	0	0	0	0	0	7.2
19:00 to 19:15	0.8	0	0	0	0	0	1.2
19:15 to 19:30	0.8	0	0	0	0	0	1.2
19:30 to 19:45	0.6	0	0	0.2	0	0	0
19:45 to 20:00	0.6	0	0	0.2	0	0	0
20:00 to 20:15	0.4	0	0	0.8	0	0	0
20:15 to 20:30	0.4	0	0	0.8	0	0	0
20:30 to 20:45	0	0	0	0.2	0	0	0.2
20:45 to 21:00	0	0	0	0.2	0	0	0.2
21:00 to 21:15	0.8	0	0	0	0	0	0
21:15 to 21:30	0.8	0	0	0	0	0	0
21:30 to 21:45	0.8	0	0	0	0	0	0
21:45 to 22:00	0.8	0	0	0	0	0	0
22:00 to 22:15	0.2	0	0.8	0	0	0	0
22:15 to 22:30	0.2	0	0.8	0	0	0	0
22:30 to 22:45	0	0	0	0.2	0	0	0
22:45 to 23:00	0	0	0	0.2	0	0	0
23:00 to 23:15	0.2	0	0	0	0	0	0
23:15 to 23:30	0.2	0	0	0	0	0	0
23:30 to 23:45	0	0	0.4	0	0	0	0
23:45 to 00:00	0	0	0.4	0	0	0	0



# RAIN

	Mon	Tue	Wed	Thu	Fri	Sat	Sun
	16/03/2020	17/03/2020	18/03/2020	19/03/2020	20/03/2020	21/03/2020	22/03/2020
00:00 to 00:15	0	0	0	0	0	0	0
00:15 to 00:30	0	0	0	0	0	0	0
00:30 to 00:45	0	0	0	0	0	0	0
00:45 to 01:00	0	0	0	0	0	0	0
01:00 to 01:15	0	0	0	0	0	0	0
01:15 to 01:30	0	0	0	0	0	0	0
01:30 to 01:45	0	0	0	0	0	0	0
01:45 to 02:00	0	0	0	0	0	0	0
02:00 to 02:15	0	0	0	0	0	0	0
02:15 to 02:30	0	0	0	0	0	0	0
02:30 to 02:45	0	0	0	0	0	0	0
02:45 to 03:00	0	0	0	0	0	0	0
03:00 to 03:15	0	0	0	0	0	0	0
03:15 to 03:30	0	0	0	0	0	0	0
03:30 to 03:45	0	0	0	0	0	0	0
03:45 to 04:00	0	0	0	0	0	0	0
04:00 to 04:15	0	0	0	0	0	0	0
04:15 to 04:30	0	0	0	0	0	0	0
04:30 to 04:45	0	0	0	0	0	0	0
04:45 to 05:00	0	0	0	0	0	0	0
05:00 to 05:15	0	0	0	0	0	0	0
05:15 to 05:30	0	0	0	0	0	0	0
05:30 to 05:45	0	0	0	0	0	0	0
05:45 to 06:00	0	0	0	0	0	0	0
06:00 to 06:15	0	0	0	0	0	0	0
06:15 to 06:30	0	0	0	0	0	0	0
06:30 to 06:45	0	0	0	0	0	0	0
06:45 to 07:00	0	0	0	0	0	0	0
07:00 to 07:15	0	0	0	0	0	0	0
07:15 to 07:30	0	0	0	0	0	0	0
07:30 to 07:45	0	0	0	0	0	0	0
07:45 to 08:00	0	0	0	0	0	0	0
08:00 to 08:15	0	0	0	0	0	0	0
08:15 to 08:30	0	0	0	0	0	0	0
08:30 to 08:45	0	0	0	0	0	0	0
08:45 to 09:00	0	0	0	0	0	0	0
09:00 to 09:15	0	0	0	0	0	0	0
09:15 to 09:30	0	0	0	0	0	0	0
09:30 to 09:45	0.2	0	0	0	0	0	0
09:45 to 10:00	0.2	0	0	0	0	0	0
10:00 to 10:15	0	0	0	0	0	0	0
10:15 to 10:30	0	0	0	0	0	0	0
10:30 to 10:45	0	0	0	0	0	0	0
10:45 to 11:00	0	0	0	0	0	0	0
11:00 to 11:15	0	0	0	0	0	0	0
11:15 to 11:30	0	0	0	0	0	0	0
11:30 to 11:45	0	0	0	0	0	0	0
11:45 to 12:00	0	0	0	0	0	0	0
12:00 to 12:15	0	0	0	0	0	0	0
12:15 to 12:30	0	0	0	0	0	0	0
12:30 to 12:45	0	0	0	0	0	0	0
12:45 to 13:00	0	0	0	0	0	0	0
13:00 to 13:15	0	0	0	0	0	0	0
13:15 to 13:30	0	0	0	0	0	0	0
13:30 to 13:45	0	0	0	0	0	0	0
13:45 to 14:00	0	0	0	0	0	0	0
14:00 to 14:15	0	0	0	0	0	0	0
14:15 to 14:30	0	0	0	0	0	0	0
14:30 to 14:45	0	0	0	0	0	0	0
14:45 to 15:00	0	0	0	0	0	0	0
15:00 to 15:15	0	0	0	0	0	0	0
15:15 to 15:30	0	0	0	0	0	0	0
15:30 to 15:45	0	0	0	0	0	0	0
15:45 to 16:00	0	0	0	0	0	0	0
16:00 to 16:15	0	0	0	0	0	0	0
16:15 to 16:30	0	0	0	0	0	0	0
16:30 to 16:45	0	0	0	0	0	0	0
16:45 to 17:00	0	0	0	0	0	0	0
17:00 to 17:15	0.2	0	0	0	0	0	0
17:15 to 17:30	0.2	0	0	0	0	0	0
17:30 to 17:45	0	0	0	0	0	0	0
17:45 to 18:00	0	0	0	0	0	0	0
18:00 to 18:15	0.2	0	0	0	0	0	0
18:15 to 18:30	0.2	0	0	0	0	0	0
18:30 to 18:45	0.8	0	0	0	0	0	0
18:45 to 19:00	0.8	0	0	0	0	0	0
19:00 to 19:15	0	0	0	0	0	0	0
19:15 to 19:30	0	0	0	0	0	0	0
19:30 to 19:45	0	0	0	0	0	0	0
19:45 to 20:00	0	0	0	0	0	0	0
20:00 to 20:15	0.2	0	0	0	0	0	0
20:15 to 20:30	0.2	0	0	0	0	0	0
20:30 to 20:45	0	0	0	0	0	0	0
20:45 to 21:00	0	0	0	0	0	0	0
21:00 to 21:15	0	0	0	0	0	0	0
21:15 to 21:30	0	0	0	0	0	0	0
21:30 to 21:45	0	0	0	0	0	0	0
21:45 to 22:00	0	0	0	0	0	0	0
22:00 to 22:15	0.2	0	0	0	0	0	0
22:15 to 22:30	0.2	0	0	0	0	0	0
22:30 to 22:45	0	0	0	0	0	0	0
22:45 to 23:00	0	0	0	0	0	0	0
23:00 to 23:15	0	0	0	0	0	0	0
23:15 to 23:30	0	0	0	0	0	0	0
23:30 to 23:45	0	0	0	0	0	0	0
23:45 to 00:00	0	0	0	0	0	0	0

# RAIN

	Mon	Tue	Wed	Thu	Fri	Sat	Sun
	23/03/2020	24/03/2020	25/03/2020	26/03/2020	27/03/2020	28/03/2020	29/03/2020
00:00 to 00:15	0	0	0	0	0.6	0	0
00:15 to 00:30	0	0	0	0	0.6	0	0
00:30 to 00:45	0	0	0	0	1.4	0	0
00:45 to 01:00	0	0	0	0	1.4	0	0
01:00 to 01:15	0	0	0	0	0.2	0	0.2
01:15 to 01:30	0	0	0	0	0.2	0	0.2
01:30 to 01:45	0	0	0	0	0	0	0
01:45 to 02:00	0	0	0	0	0	0	0
02:00 to 02:15	0	0.6	0	0	0	0	0
02:15 to 02:30	0	0.6	0	0	0	0	0
02:30 to 02:45	0	0.2	0	0	0	0	0
02:45 to 03:00	0	0.2	0	0	0	0	0
03:00 to 03:15	0	0.6	0.2	0	0	0	0
03:15 to 03:30	0	0.6	0.2	0	0	0	0
03:30 to 03:45	0	0	0	0	0	0	0
03:45 to 04:00	0	0	0	0	0	0	0
04:00 to 04:15	0	0	0	0	0	0	0
04:15 to 04:30	0	0	0	0	0	0	0
04:30 to 04:45	0	0.2	0	0	0.2	0	0
04:45 to 05:00	0	0.2	0	0	0.2	0	0
05:00 to 05:15	0	0	0	0	0	0	0
05:15 to 05:30	0	0	0	0	0	0	0
05:30 to 05:45	0	0	0	0	0	0	0
05:45 to 06:00	0	0	0	0	0	0	0
06:00 to 06:15	0	0.6	0	0	0	0	0
06:15 to 06:30	0	0.6	0	0	0	0	0
06:30 to 06:45	0	0	1	0	0	0	0
06:45 to 07:00	0	0	1	0	0	0	0
07:00 to 07:15	0	0	0.2	0	0	0	0
07:15 to 07:30	0	0	0.2	0	0	0	0
07:30 to 07:45	0	0	0	0	0	0	0
07:45 to 08:00	0	0	0	0	0	0	0
08:00 to 08:15	0	0	0	0	0	0	0
08:15 to 08:30	0	0	0	0	0	0	0
08:30 to 08:45	0	0	0	0	0	0	0
08:45 to 09:00	0	0	0	0	0	0	0
09:00 to 09:15	0	0	0	0	0.2	0	0
09:15 to 09:30	0	0	0	0	0.2	0	0
09:30 to 09:45	0	0	0	0	0	0	0
09:45 to 10:00	0	0	0	0	0	0	0
10:00 to 10:15	0	0	0.2	0	0.2	0	0
10:15 to 10:30	0	0	0.2	0	0.2	0	0
10:30 to 10:45	0	0	0	0	0.2	0	0
10:45 to 11:00	0	0	0	0	0.2	0	0
11:00 to 11:15	0	0	0	0	0.2	0	0.2
11:15 to 11:30	0	0	0	0	0.2	0	0.2
11:30 to 11:45	0	0	0	0	0	0	0
11:45 to 12:00	0	0	0	0	0	0	0
12:00 to 12:15	0	0	0	0	0.2	0	0
12:15 to 12:30	0	0	0	0	0.2	0	0
12:30 to 12:45	0	0	0	0	0.6	0	0
12:45 to 13:00	0	0	0	0	0.6	0	0
13:00 to 13:15	0	0	0	0	0.4	0	0
13:15 to 13:30	0	0	0	0	0.4	0	0
13:30 to 13:45	0	0	0	0	0.6	0	0
13:45 to 14:00	0	0	0	0	0.6	0	0
14:00 to 14:15	0	0	0	0	0.8	0	0
14:15 to 14:30	0	0	0	0	0.8	0	0
14:30 to 14:45	0	0	0	0	0	0	0
14:45 to 15:00	0	0	0	0	0	0	0
15:00 to 15:15	0	0.6	0	0	0	0	0
15:15 to 15:30	0	0.6	0	0	0	0	0
15:30 to 15:45	1.8	0.6	0	0	0	0	0
15:45 to 16:00	1.8	0.6	0	0	0	0	0
16:00 to 16:15	2.4	0	0	0	0.2	0	0
16:15 to 16:30	2.4	0	0	0	0.2	0	0
16:30 to 16:45	0.4	0	0	0	0	0	0
16:45 to 17:00	0.4	0	0	0	0	0	0
17:00 to 17:15	0	0	0	0	0	0	0
17:15 to 17:30	0	0	0	0	0	0	0
17:30 to 17:45	0.4	0	0	0	0	0	0
17:45 to 18:00	0.4	0	0	0	0	0	0
18:00 to 18:15	2.6	0	0	0	0	0	0
18:15 to 18:30	2.6	0	0	0	0	0	0
18:30 to 18:45	1.4	0	0	0	0	0	0
18:45 to 19:00	1.4	0	0	0	0	0	0
19:00 to 19:15	0.4	0	0	0	0	0	0
19:15 to 19:30	0.4	0	0	0	0	0	0
19:30 to 19:45	0	0	0	0	0	0	0
19:45 to 20:00	0	0	0	0	0	0	0
20:00 to 20:15	0	0	0	0.2	0	0.4	0
20:15 to 20:30	0	0	0	0.2	0	0.4	0
20:30 to 20:45	0	0	0	5	0	0	0
20:45 to 21:00	0	0	0	5	0	0	0
21:00 to 21:15	0	0	0	0.2	0	0	0
21:15 to 21:30	0	0	0	0.2	0	0	0
21:30 to 21:45	0	0	0	0.6	0	0	0
21:45 to 22:00	0	0	0	0.6	0	0	0
22:00 to 22:15	0	0	0	0	0	0	0
22:15 to 22:30	0	0	0	0	0	0	0
22:30 to 22:45	0	0	0	2	0	0	0
22:45 to 23:00	0	0	0	2	0	0	0
23:00 to 23:15	0	0	0	0.4	0.2	0	0
23:15 to 23:30	0	0	0	0.4	0.2	0	0
23:30 to 23:45	0	0	0	0.6	0	0	0
23:45 to 00:00	0	0	0	0.6	0	0	0

# RAIN

	Mon	Tue
	30/03/2020	31/03/2020
00:00 to 00:15	0	0
00:15 to 00:30	0	0
00:30 to 00:45	0	0
00:45 to 01:00	0	0
01:00 to 01:15	0	0
01:15 to 01:30	0	0
01:30 to 01:45	0	0
01:45 to 02:00	0	0
02:00 to 02:15	0	0
02:15 to 02:30	0	0
02:30 to 02:45	0	0
02:45 to 03:00	0	0
03:00 to 03:15	0	0
03:15 to 03:30	0	0
03:30 to 03:45	0	0
03:45 to 04:00	0	0
04:00 to 04:15	0	0
04:15 to 04:30	0	0
04:30 to 04:45	0	0
04:45 to 05:00	0	0
05:00 to 05:15	0	0
05:15 to 05:30	0	0
05:30 to 05:45	0	0
05:45 to 06:00	0	0
06:00 to 06:15	0	0
06:15 to 06:30	0	0
06:30 to 06:45	0	0
06:45 to 07:00	0	0
07:00 to 07:15	0	0
07:15 to 07:30	0	0
07:30 to 07:45	0	0
07:45 to 08:00	0	0
08:00 to 08:15	0	0
08:15 to 08:30	0	0
08:30 to 08:45	0	0
08:45 to 09:00	0	0
09:00 to 09:15	0	0
09:15 to 09:30	0	0
09:30 to 09:45	0	0
09:45 to 10:00	0	0
10:00 to 10:15	0	0
10:15 to 10:30	0	0
10:30 to 10:45	0	0
10:45 to 11:00	0	0
11:00 to 11:15	0	0
11:15 to 11:30	0	0
11:30 to 11:45	0	0
11:45 to 12:00	0	0
12:00 to 12:15	0	0
12:15 to 12:30	0	0
12:30 to 12:45	0	0
12:45 to 13:00	0	0
13:00 to 13:15	0	0
13:15 to 13:30	0	0
13:30 to 13:45	0	0
13:45 to 14:00	0	0
14:00 to 14:15	0	0
14:15 to 14:30	0	0
14:30 to 14:45	0	0
14:45 to 15:00	0	0
15:00 to 15:15	0	0
15:15 to 15:30	0	0
15:30 to 15:45	0	0
15:45 to 16:00	0	0
16:00 to 16:15	0	0
16:15 to 16:30	0	0
16:30 to 16:45	0	0
16:45 to 17:00	0	0
17:00 to 17:15	0	0
17:15 to 17:30	0	0
17:30 to 17:45	0	0
17:45 to 18:00	0	0
18:00 to 18:15	0	0
18:15 to 18:30	0	0
18:30 to 18:45	0	0
18:45 to 19:00	0	0
19:00 to 19:15	0	0
19:15 to 19:30	0	0
19:30 to 19:45	0	0
19:45 to 20:00	0	0
20:00 to 20:15	0	0
20:15 to 20:30	0	0
20:30 to 20:45	0	0
20:45 to 21:00	0	0
21:00 to 21:15	0	0
21:15 to 21:30	0	0
21:30 to 21:45	0	0
21:45 to 22:00	0	0
22:00 to 22:15	0	0
22:15 to 22:30	0	0
22:30 to 22:45	0	0
22:45 to 23:00	0	0
23:00 to 23:15	0	0
23:15 to 23:30	0	0
23:30 to 23:45	0	0
23:45 to 00:00	0	0

## **Appendix IV**

### **ADE Site Time Summary**

---

**Sydney Office:**  
ADE Consulting Group Pty Ltd  
Unit 6 / 7 Millennium Court  
Silverwater, NSW 2128

**Melbourne Office:**  
ADE Consulting Group Pty Ltd  
Unit 4 / 95 Salmon Street  
Port Melbourne, VIC 3207

**Newcastle Office:**  
ADE Consulting Group Pty Ltd  
Unit 9 / 103 Glenwood Drive  
Thornton, NSW 2322

**Brisbane Office:**  
ADE Consulting Group Pty Ltd  
Unit 3 / 22 Palmer Place  
Murarrie QLD 4172

**Contact Us:**  
Site: [www.ADE.Group](http://www.ADE.Group)  
Email: [info@ade.group](mailto:info@ade.group)  
Phone: 1300 976 922

Date of site visit
02.03.2020
13.03.2020
19.03.2020
31.03.2020
06.04.2020

## Appendix V

A-weighted equivalent continuous noise level over a 15-minute period for each monitoring location

---

**Sydney Office:**  
ADE Consulting Group Pty Ltd  
Unit 6 / 7 Millennium Court  
Silverwater, NSW 2128

**Melbourne Office:**  
ADE Consulting Group Pty Ltd  
Unit 4 / 95 Salmon Street  
Port Melbourne, VIC 3207

**Newcastle Office:**  
ADE Consulting Group Pty Ltd  
Unit 9 / 103 Glenwood Drive  
Thornton, NSW 2322

**Brisbane Office:**  
ADE Consulting Group Pty Ltd  
Unit 3 / 22 Palmer Place  
Murarrie QLD 4172

**Contact Us:**  
Site: [www.ADE.Group](http://www.ADE.Group)  
Email: [info@ade.group](mailto:info@ade.group)  
Phone: 1300 976 922

# 001 Adjacent to carpark – NGARA2

## Ngara 2

Limit 168m	
High Noise 168m	
Sun	
1/03/2020	
00:00 to 00:15	52.8
00:15 to 00:30	55.1
00:30 to 00:45	50.7
00:45 to 01:00	51.9
01:00 to 01:15	50.2
01:15 to 01:30	48.7
01:30 to 01:45	49
01:45 to 02:00	48.8
02:00 to 02:15	51
02:15 to 02:30	48.2
02:30 to 02:45	44.9
02:45 to 03:00	48
03:00 to 03:15	46.2
03:15 to 03:30	48.2
03:30 to 03:45	48.7
03:45 to 04:00	52.5
04:00 to 04:15	49.4
04:15 to 04:30	49.2
04:30 to 04:45	51.9
04:45 to 05:00	52.3
05:00 to 05:15	52.3
05:15 to 05:30	63.8
05:30 to 05:45	61.5
05:45 to 06:00	56.9
06:00 to 06:15	59.4
06:15 to 06:30	59.2
06:30 to 06:45	58.8
06:45 to 07:00	59.6
07:00 to 07:15	59.4
07:15 to 07:30	61.9
07:30 to 07:45	64.4
07:45 to 08:00	64.4
08:00 to 08:15	64.1
08:15 to 08:30	64.9
08:30 to 08:45	64.7
08:45 to 09:00	64.1
09:00 to 09:15	64.3
09:15 to 09:30	65.6
09:30 to 09:45	64.4
09:45 to 10:00	66
10:00 to 10:15	65.4
10:15 to 10:30	65.6
10:30 to 10:45	65.5
10:45 to 11:00	65.2
11:00 to 11:15	65.1
11:15 to 11:30	64
11:30 to 11:45	66.1
11:45 to 12:00	65.3
12:00 to 12:15	55.1
12:15 to 12:30	54.8
12:30 to 12:45	54.8
12:45 to 13:00	55.1
13:00 to 13:15	55.8
13:15 to 13:30	55.2
13:30 to 13:45	55.3
13:45 to 14:00	56.1
14:00 to 14:15	55.8
14:15 to 14:30	55
14:30 to 14:45	55.3
14:45 to 15:00	55.4
15:00 to 15:15	54.2
15:15 to 15:30	55.4
15:30 to 15:45	54.9
15:45 to 16:00	53.1
16:00 to 16:15	65.9
16:15 to 16:30	64.6
16:30 to 16:45	64.1
16:45 to 17:00	65.3
17:00 to 17:15	65.5
17:15 to 17:30	65.1
17:30 to 17:45	67.2
17:45 to 18:00	66.3
18:00 to 18:15	67.9
18:15 to 18:30	68.1
18:30 to 18:45	58.9
18:45 to 19:00	57.5
19:00 to 19:15	57.7
19:15 to 19:30	56.2
19:30 to 19:45	55.5
19:45 to 20:00	54.7
20:00 to 20:15	55.1
20:15 to 20:30	54.1
20:30 to 20:45	54.3
20:45 to 21:00	53.4
21:00 to 21:15	54.2
21:15 to 21:30	54.9
21:30 to 21:45	52.3
21:45 to 22:00	52.5
22:00 to 22:15	51.2
22:15 to 22:30	50.9
22:30 to 22:45	49.1
22:45 to 23:00	49.7
23:00 to 23:15	45.1
23:15 to 23:30	49.1
23:30 to 23:45	45.5
23:45 to 00:00	46.5

# 001 Adjacent to carpark – NGARA2

## Ngara 2

	73 75	Limit 56m High noise 56	79 81	Limit 18m High Noise 18m	85 87	Limit 5m High Noise 5m	91 93
	Mon	Tue	Wed	Thu	Fri	Sat	Sun
	2/03/2020	3/03/2020	4/03/2020	5/03/2020	6/03/2020	7/03/2020	8/03/2020
00:00 to 00:15	39.7	48	34.6	35.9	49.6	48.9	53.9
00:15 to 00:30	43.2	43.7	35.2	32.5	48.8	50.1	52.7
00:30 to 00:45	44.9	42.7	35.1	31.5	47.5	46.1	53.6
00:45 to 01:00	46.1	44.4	35.2	34	48	44.9	53.1
01:00 to 01:15	41.2	43.2	33.7	31.4	49.2	48	41.7
01:15 to 01:30	37.9	42.1	33.8	34.3	48.2	44.7	40.1
01:30 to 01:45	42.5	44.4	35.1	32.6	49.6	46.6	41.4
01:45 to 02:00	38.6	39.3	33.7	34.2	48.3	48.3	42.8
02:00 to 02:15	40.7	39.8	31.5	32.8	42.7	49.8	41.7
02:15 to 02:30	42	47.6	34.9	37.2	44	48	41.7
02:30 to 02:45	46.3	44.7	32.9	38.8	46.9	42.2	40.5
02:45 to 03:00	49	46.6	38.4	32.7	47.6	48.9	41.2
03:00 to 03:15	44.8	46.3	36.6	32.4	48	47	51.1
03:15 to 03:30	50.8	50.3	39.8	37	47.2	43.6	49.3
03:30 to 03:45	50.1	51.1	40.6	42.3	49.9	48.9	52.1
03:45 to 04:00	50.6	52.1	41.4	41.9	51.4	50.4	50.1
04:00 to 04:15	52.1	52.2	43	42.4	42.3	52.1	36.9
04:15 to 04:30	56	54	45.5	43.5	45.3	52.4	41.5
04:30 to 04:45	56.5	55.8	46.5	44.8	45.4	53.4	44.6
04:45 to 05:00	56.2	57.4	47.4	46.5	46.2	54.7	43
05:00 to 05:15	56.8	57	47.3	46.5	56.8	54.2	52.5
05:15 to 05:30	61.7	60.9	52.4	55.2	61.9	62.3	56.5
05:30 to 05:45	62.3	59.8	53.5	53.5	64.6	62.7	60.4
05:45 to 06:00	60.4	60.4	52.4	51.3	61.2	57.8	57.4
06:00 to 06:15	59.9	60.6	49.5	49.7	58.4	58.1	55.9
06:15 to 06:30	62.9	61.8	54.6	53.4	61	61	58.1
06:30 to 06:45	64.4	64.7	61.3	57.6	66.6	61.6	59
06:45 to 07:00	64.6	67.9	61.6	56	68.1	60.4	58.4
07:00 to 07:15	64.7	64.8	59.6	56.7	70	61.3	59.4
07:15 to 07:30	65.5	66.4	56.3	56.6	69	66.1	60
07:30 to 07:45	65.4	66.6	58.1	60	69.8	62.6	49.9
07:45 to 08:00	66.1	67.4	59.2	61.4	66	61.9	50.7
08:00 to 08:15	63.6	66	58.8	60.5	67.5	51	51.1
08:15 to 08:30	66	66.5	55	60.9	69.5	51.9	52.9
08:30 to 08:45	65.2	66.6	56.2	60.8	71	52.8	53.1
08:45 to 09:00	63.7	65	58.5	59.4	66.2	53.1	53.1
09:00 to 09:15	64.7	61.8	57	56.2	67.3	53.1	53.3
09:15 to 09:30	63.1	62.7	55.5	58.8	64	52.6	51.6
09:30 to 09:45	64.6	68.1	56.7	58.9	64.1	53.5	53.4
09:45 to 10:00	65.1	66.3	56.6	57.9	64.6	53.5	52.4
10:00 to 10:15	65.5	69.7	58.2	58.3	64.4	53.2	52.9
10:15 to 10:30	66.2	68.6	57.1	57.6	64.5	53.3	51.2
10:30 to 10:45	64	67.5	59.3	55.4	64	53.7	52.9
10:45 to 11:00	64.8	65.4	58.4	57.3	63.9	53.1	53.6
11:00 to 11:15	65.2	65.1	59.2	56	53.6	54	52
11:15 to 11:30	67.7	66.4	56.7	57.1	57.1	53.1	53.1
11:30 to 11:45	56.1	65.8	64.1	56.3	59.4	53	53.3
11:45 to 12:00	55.2	64.9	67	59.6	57.4	52.5	52.8
12:00 to 12:15	55.3	59.5	58.3	58.9	56.5	52.4	52.3
12:15 to 12:30	55.5	55.5	59.1	58	56.2	52.3	52.3
12:30 to 12:45	55.5	63.4	59.2	54	55.8	52.8	51.3
12:45 to 13:00	54.6	65.8	56.2	53.6	56.6	53	51
13:00 to 13:15	55.6	58	57.2	54.7	57.3	52.7	51.4
13:15 to 13:30	54.3	59.7	59.6	60	57.7	52.1	51.3
13:30 to 13:45	54.5	58.3	62.1	59	55.6	51.9	51.9
13:45 to 14:00	57.1	58.4	59.9	59.5	55.5	53	51.6
14:00 to 14:15	57.4	58.3	58.6	62	57	52.5	52.6
14:15 to 14:30	80.1	59.5	58.9	60.6	57.4	53.6	50.9
14:30 to 14:45	56.6	57.3	67.9	57.5	55.9	52.8	50.8
14:45 to 15:00	55.3	57	68.7	56.4	53.8	52.8	51.4
15:00 to 15:15	55.3	57.5	68.5	58.9	54.4	53	51.7
15:15 to 15:30	55.7	57.7	68.8	56.2	54.9	54	52.3
15:30 to 15:45	53.6	55.6	70.3	55.7	54.1	53.7	51.9
15:45 to 16:00	54	55	67.9	55	56.9	52	51.4
16:00 to 16:15	64.1	54.8	55	56.2	56.1	53	52
16:15 to 16:30	63.5	55.4	52	56.6	54	54	51.8
16:30 to 16:45	52	55.9	55.3	54	54.6	52.4	51.9
16:45 to 17:00	52.8	56.1	51.8	54.9	53.4	53.4	52.8
17:00 to 17:15	62.5	56.4	64.7	55.5	53.4	54.1	52.5
17:15 to 17:30	62.9	55.6	66.2	55.1	53.7	52.2	51.4
17:30 to 17:45	61.7	54.8	67.3	56.5	65.2	50.6	51.7
17:45 to 18:00	61.7	54.7	66.3	56.2	64.5	50.1	52.3
18:00 to 18:15	62.6	56.2	66.7	56.6	54.6	52.2	53.4
18:15 to 18:30	62.5	56.3	67.4	53.7	51.5	52.3	50.1
18:30 to 18:45	58.7	48.9	57.9	48.5	58.9	48.2	47.9
18:45 to 19:00	56.9	49	57.8	46.3	59.6	47.9	47.1
19:00 to 19:15	46.3	59.8	57.1	45.5	58.6	47.2	57.5
19:15 to 19:30	46.7	63.1	56.5	45.4	59	47.7	56.2
19:30 to 19:45	44.9	58.7	47.2	47	48.8	47	56.1
19:45 to 20:00	45.1	56.1	46.1	45.4	47.7	44.7	55.1
20:00 to 20:15	43.9	46.5	47	46.9	46.8	46.7	54.9
20:15 to 20:30	45.1	46.1	46.6	45.2	48.4	46.1	54.2
20:30 to 20:45	45.1	46.5	55.1	55.3	57.2	46.3	54.3
20:45 to 21:00	42.7	43.5	54	52.5	54.2	46.5	54.3
21:00 to 21:15	52	53.4	54.9	45.6	57.1	45.2	53.5
21:15 to 21:30	51	54.2	51.4	43.5	55.4	44.6	54.6
21:30 to 21:45	52.5	42.2	40.2	53.4	55.3	55.3	43.6
21:45 to 22:00	52.7	44.6	39.7	55.5	56.8	56.7	38.9
22:00 to 22:15	50.3	50.7	51.8	51.8	54.4	56.7	39.3
22:15 to 22:30	51.7	49.1	47.8	49.6	50.7	56.4	36.9
22:30 to 22:45	46.9	47.3	49.8	50.3	53	55.7	48.5
22:45 to 23:00	45.1	50.7	49.1	50.8	51.1	54.2	52
23:00 to 23:15	46.2	47.3	34.3	52.4	53	54.5	47.3
23:15 to 23:30	49.3	45.1	38.1	49.6	52.6	54.6	49.2
23:30 to 23:45	43.3	36.9	35.6	47.4	51.6	53.2	33.7
23:45 to 00:00	46.3	39.1	38.6	47.6	49.4	53.2	38.2



# 001 Adjacent to carpark – NGARA2

## Ngara 2

	H						
	Mon	Tue	Wed	Thu	Fri	Sat	Sun
	9/03/2020	10/03/2020	11/03/2020	12/03/2020	13/03/2020	14/03/2020	15/03/2020
00:00 to 00:15	47.3	51.3	49.1	37.9	39.3	52.2	51.7
00:15 to 00:30	45.7	34.7	48.9	30.5	47.9	49.6	48.8
00:30 to 00:45	38.4	36.9	50.9	37.3	47.6	47.5	47.9
00:45 to 01:00	43.6	34.9	45.8	38.8	44.8	49.6	48.8
01:00 to 01:15	40.7	34.1	45.3	48.7	43	49.4	50.9
01:15 to 01:30	44.8	41.4	41.5	44.7	43.2	47	49.7
01:30 to 01:45	45.4	41.9	46.2	37.2	48.1	51.4	50.9
01:45 to 02:00	44.9	42	48.6	34.7	44.1	49	48.6
02:00 to 02:15	26.1	37.7	40.7	33.6	47.6	48.7	45.3
02:15 to 02:30	40	35.3	44.1	37.8	43.9	49	44.6
02:30 to 02:45	46.1	37.3	44.2	45.5	39.8	49.8	33.7
02:45 to 03:00	47.4	41.1	52.1	49.3	39.8	45	35.5
03:00 to 03:15	46.1	39.5	48.8	47.1	49	44.5	38.2
03:15 to 03:30	52.4	37.6	49.2	47.7	51.7	45.9	34.9
03:30 to 03:45	51	53	50	51.5	52.9	50.4	43.7
03:45 to 04:00	52.9	54.7	52.8	51.2	54.4	50.8	38.7
04:00 to 04:15	52.2	54	52.7	52.6	53.7	51.5	40.1
04:15 to 04:30	56.4	55.4	57.2	55.5	56.5	53.2	40
04:30 to 04:45	56.1	45.9	56	57.5	57.1	54.4	42.5
04:45 to 05:00	57.2	47.3	57.3	58	57.7	56.3	44.2
05:00 to 05:15	56.8	62.1	57.4	57.7	59.9	55.3	42.8
05:15 to 05:30	58	63.7	57.6	58.6	60.6	54.8	44.1
05:30 to 05:45	51.5	51	49.3	60.7	61	58	45.9
05:45 to 06:00	51.6	50.9	51.1	61.4	60.9	58.2	47.2
06:00 to 06:15	50.4	50.4	61.3	51.5	60.7	58.5	46.7
06:15 to 06:30	53.5	51.9	62.2	54	62.1	58.4	46.7
06:30 to 06:45	64.7	52.7	52.9	58.7	52.9	59.5	48.8
06:45 to 07:00	65.2	53.6	54.7	60.7	54.2	60.2	48.7
07:00 to 07:15	54.5	54.1	55.3	61.9	69.9	59.9	48.9
07:15 to 07:30	54.8	54.9	57.4	65.8	65.3	59.6	49.1
07:30 to 07:45	55.2	65	68.6	71.1	65.2	51.5	51.5
07:45 to 08:00	54.5	64.5	64.5	67.6	64.4	51.3	51.3
08:00 to 08:15	52.8	53.8	54.2	55.8	63.5	50.6	50.6
08:15 to 08:30	52.9	53.3	52.6	58.2	68.4	51.3	51.2
08:30 to 08:45	61.7	52	52.3	61.4	71.2	51.8	51
08:45 to 09:00	62	52.5	52.3	59	63.9	52.4	52.8
09:00 to 09:15	53.6	64.3	52.2	56	52.1	51.9	52.8
09:15 to 09:30	53.5	66.4	53.5	58.1	51.7	52	52.2
09:30 to 09:45	53	55.2	51.8	55.6	55.8	52.6	53
09:45 to 10:00	52.9	54.9	51.7	55.7	61.4	52.1	52
10:00 to 10:15	62.2	52.3	51.9	54.2	63.6	52.5	52.5
10:15 to 10:30	63	56	51.4	54.1	61.2	52	52.3
10:30 to 10:45	52.8	53.5	51.8	53.4	59.3	52.2	51.5
10:45 to 11:00	52.8	52.8	52.6	55.1	53.2	52.9	51.9
11:00 to 11:15	53	55	51.4	54.8	57.6	52.1	52.8
11:15 to 11:30	52.8	55.5	53.1	54.5	52.9	52.6	55.6
11:30 to 11:45	54.3	65.2	54	52.7	52.9	52.3	52.4
11:45 to 12:00	53.8	64.6	52.2	52.2	52.3	52.5	51.7
12:00 to 12:15	53.7	55.2	51.5	51.9	52.1	51.7	52.1
12:15 to 12:30	53.9	54.2	51.9	53.4	51.7	51.8	52.1
12:30 to 12:45	53.5	64.3	52.4	52.8	51.6	51.6	51.9
12:45 to 13:00	52.2	61.5	52.6	52.7	52.7	52.3	52.2
13:00 to 13:15	53.2	50.3	53.2	54.5	53	51.5	51.7
13:15 to 13:30	54	53.2	51.9	53.4	52.9	51.7	51.7
13:30 to 13:45	54.1	53.2	53.9	54.2	53.5	51.4	51.7
13:45 to 14:00	53.9	53.1	53.2	54.3	55.1	52.1	52.1
14:00 to 14:15	53.9	64.1	54.3	54.7	55.3	52	52
14:15 to 14:30	53.9	64.1	53.8	55.1	54.9	50.5	51.5
14:30 to 14:45	64	64	53.5	56.1	56.4	51.3	51.6
14:45 to 15:00	64.6	63.8	53.3	56.4	53.5	53.2	52
15:00 to 15:15	55.2	56.4	53.2	56	54.4	51.4	52.9
15:15 to 15:30	53.9	53.9	53.7	54.5	53.9	51.9	53.8
15:30 to 15:45	54.6	54.1	53.9	54	53.7	51.5	52.7
15:45 to 16:00	54.8	54.2	53	54.1	52.1	51.8	51.3
16:00 to 16:15	54.3	53.9	53.1	54.9	52.5	52.4	52.1
16:15 to 16:30	54.5	53	53.5	53.3	52.2	51.9	51.4
16:30 to 16:45	54.3	52	53.3	53.3	52.1	51.7	51.6
16:45 to 17:00	52.9	54.6	51.9	53	52.1	50.6	50.8
17:00 to 17:15	55.1	63.3	53	51.8	52.2	50.9	51
17:15 to 17:30	53.7	61.5	52.4	52.6	51.2	50.4	57.1
17:30 to 17:45	51.2	50.9	51.6	53.4	51.1	49.5	53.4
17:45 to 18:00	51.6	52.5	50.7	52.1	51.6	51.7	54.1
18:00 to 18:15	50.1	51.5	51.5	50.5	50.7	51	50.6
18:15 to 18:30	49.7	49.4	50.5	50.1	49.6	48.3	48.5
18:30 to 18:45	48.9	59.4	49.3	59.8	48.9	49	47.6
18:45 to 19:00	48.8	59.1	48.7	60.6	48.7	49.7	46.4
19:00 to 19:15	48.2	57.8	48.5	48.6	58.5	47.5	47.6
19:15 to 19:30	48.8	58.2	48.1	47.9	58.4	46.9	46.9
19:30 to 19:45	49.4	58.5	47.6	49	57.5	47.5	49
19:45 to 20:00	46.8	58.2	47.8	48.4	55.6	47.4	49.4
20:00 to 20:15	46.4	56.8	46.9	47.3	57.5	46.3	46.1
20:15 to 20:30	45	55.1	48.2	46.7	55.9	46.2	47.2
20:30 to 20:45	56.8	57.2	47.1	46.5	55.3	46.1	48.9
20:45 to 21:00	55.8	56.2	46.6	45.3	56.8	46.2	48.9
21:00 to 21:15	45	56.3	45	54	55.6	45.9	48.3
21:15 to 21:30	44.8	54.6	44.2	54.4	55.3	46.9	47.1
21:30 to 21:45	40.6	53	52.1	53.4	54.7	54.7	45
21:45 to 22:00	43.2	54.2	53.2	54.1	53.9	54.1	43.2
22:00 to 22:15	43	52.4	41.3	54.3	54.5	44.9	41.4
22:15 to 22:30	43.7	50.3	40.9	53.5	53.5	45.2	43.5
22:30 to 22:45	40.9	50.5	43.3	41.9	52.8	54	40.2
22:45 to 23:00	42.2	50.4	37.8	43.3	52.7	52.1	41.1
23:00 to 23:15	41.1	47.5	53.6	50.4	52.8	53.2	42.6
23:15 to 23:30	36.7	47.6	51.2	50	52.4	51.6	39.5
23:30 to 23:45	49.1	48.4	40.3	47.6	53.1	42.6	41
23:45 to 00:00	51.3	48	36.1	46.9	50.9	39.5	41.4

# 001 Adjacent to carpark – NGARA2

Ngara 2

H	Mon	Tue	Wed	Thu	Fri	Sat	Sun
	16/03/2020	17/03/2020	18/03/2020	19/03/2020	20/03/2020	21/03/2020	22/03/2020
00:00 to 00:15	40.4	44.7	48.7	47.8	45.4	48.6	49.4
00:15 to 00:30	37.6	45.7	47.3	48.7	43.7	51.9	49.1
00:30 to 00:45	39.1	45.3	47.2	45.6	46.1	48.5	53.3
00:45 to 01:00	40.1	45	47.1	50.6	47.8	49.1	49.5
01:00 to 01:15	37.2	47.8	45.5	48	45.3	48.7	45.7
01:15 to 01:30	34.3	46.5	45.8	45.8	45.7	49.4	43.5
01:30 to 01:45	39.7	48.9	35.1	46.1	48.7	49.5	47.2
01:45 to 02:00	37.6	48.1	39.3	51	45.7	50.6	47.1
02:00 to 02:15	38.2	46.3	45.9	47	48.6	49.4	47.5
02:15 to 02:30	40.6	45.4	46.8	45.8	47.5	50.3	43.9
02:30 to 02:45	40.8	50.4	49.6	47.9	48.5	46.6	45.8
02:45 to 03:00	41.7	50.3	47.3	50.6	47.3	48.4	48.1
03:00 to 03:15	39.5	50	41.6	46.4	51.3	49.5	48
03:15 to 03:30	41.7	48	41.5	48.5	48.5	49.1	46.8
03:30 to 03:45	44.4	50.3	50.7	52.5	49.5	49.5	49.2
03:45 to 04:00	43.9	52.3	52.9	49.8	51.7	48.7	47.2
04:00 to 04:15	46.2	52.1	52	53.5	51.1	47.6	47.9
04:15 to 04:30	46.4	54.5	55.3	54.7	54	51.4	53.1
04:30 to 04:45	47.1	56.6	56.2	55.2	55	53.6	54.2
04:45 to 05:00	48.3	57.1	58.4	56.2	56.9	54.1	53.7
05:00 to 05:15	47.7	57.7	58.2	57.4	57.5	54.5	49.4
05:15 to 05:30	48.7	57.5	57.5	58.8	58	55.9	52.5
05:30 to 05:45	49.7	49.4	59.6	59.3	58.6	57.2	54.6
05:45 to 06:00	51.1	49.9	60.3	59.8	59.5	57.8	55.2
06:00 to 06:15	50.9	49.9	51	60.4	59.5	58.5	56.6
06:15 to 06:30	54.2	53.3	54.7	64.8	62.3	58.5	57
06:30 to 06:45	57.5	56.8	58.1	65.4	65.4	60.1	57.8
06:45 to 07:00	57.8	58.1	54.9	64.9	63.4	58.6	58.4
07:00 to 07:15	58.9	56.8	54.3	66.3	64.7	58.8	57.8
07:15 to 07:30	59	56.4	54.6	67.6	66	59.2	58.8
07:30 to 07:45	57.8	58	54.2	65.1	67.5	60.5	58.8
07:45 to 08:00	57.8	54.1	56.6	71.5	65.8	60	61.6
08:00 to 08:15	54.6	53.6	59.9	63.2	65.2	60.2	60.2
08:15 to 08:30	52.6	56.9	58.1	64.8	63.6	60.7	60.2
08:30 to 08:45	53	56.2	56	62.2	68.3	60.7	60.6
08:45 to 09:00	56.7	51.6	56.9	60.3	66.2	60.5	60.9
09:00 to 09:15	53.4	51.6	55.3	59.5	70.7	61.3	60.2
09:15 to 09:30	54.9	53.1	50.1	60	66	61	60.3
09:30 to 09:45	55.3	53.2	55.9	64.6	66	60.5	60.5
09:45 to 10:00	54.6	56.8	55.4	64.6	65.4	61.2	61
10:00 to 10:15	55.2	55.3	55	59.1	65.3	61.3	60.6
10:15 to 10:30	58.1	55.1	53.6	60.6	64.3	60.5	60
10:30 to 10:45	57.4	54.6	57.5	59.9	52	60.9	60.7
10:45 to 11:00	57.6	55.8	57.4	61.3	53.8	60.4	60.3
11:00 to 11:15	57.3	55.7	56.8	62	52.8	61	60.3
11:15 to 11:30	56.9	54.4	55.1	64	55.2	62.2	60.5
11:30 to 11:45	58.4	55.2	53.4	63.9	55.8	62.2	59.6
11:45 to 12:00	57.2	56.4	51	65.2	55.5	61.1	60.4
12:00 to 12:15	55	57.8	55.4	54.1	51.8	61	60.8
12:15 to 12:30	56.3	57.1	55.4	51.5	52.4	60.7	60.1
12:30 to 12:45	55	52.6	50.4	53.6	53.6	50.7	60.6
12:45 to 13:00	53	54.6	60.1	50.1	53.3	50.8	61.4
13:00 to 13:15	57.3	53.6	54.4	51.6	54.5	51.9	51.2
13:15 to 13:30	56.1	57	52.6	53.8	54.5	51.2	50.9
13:30 to 13:45	58.3	55.5	56.2	51.9	52.1	50.9	50.6
13:45 to 14:00	56.8	54.7	56	53.7	58.3	50.7	51.8
14:00 to 14:15	56.6	54.3	54.3	54.1	60.3	51.1	51.3
14:15 to 14:30	57.7	57.4	55.6	53.5	60.7	51.4	50.5
14:30 to 14:45	59.2	56.5	56.8	64.6	54.7	51.3	60.2
14:45 to 15:00	56.8	57.3	57	65.3	52.8	51.5	58.7
15:00 to 15:15	55.8	56.9	53.4	67.2	52.1	52.8	61.9
15:15 to 15:30	56.9	55.1	54.9	65.9	52.8	51.3	59.2
15:30 to 15:45	54.5	53.6	52.9	63.2	53.8	50.3	63.6
15:45 to 16:00	55.4	53.4	52.5	62.5	51.8	50.3	59.2
16:00 to 16:15	54.4	54.3	52.8	61.5	51.6	50.5	58.9
16:15 to 16:30	54.3	53	52.5	61.3	51.9	49.8	59.4
16:30 to 16:45	54.1	52	51.4	61.7	51.6	49.5	58.5
16:45 to 17:00	53.4	53.4	51	63.3	51.6	49	58.9
17:00 to 17:15	54.4	52.6	51.2	61.2	49	49.9	58.9
17:15 to 17:30	51.3	51.7	50.8	60.3	49.9	50.4	59.4
17:30 to 17:45	52.7	51.3	49.9	59.7	50.9	50.4	58.5
17:45 to 18:00	51.6	50.9	51.4	63.3	51.3	50.6	62.2
18:00 to 18:15	49.7	50	60.7	61.7	54.3	49.7	64.3
18:15 to 18:30	48.8	49.2	59.2	57.9	47	49	55.5
18:30 to 18:45	49.2	49.6	57.7	57.8	49.3	48.3	46.7
18:45 to 19:00	49.3	48.6	57.8	57.7	47.1	47.5	45.9
19:00 to 19:15	47.1	57.8	56.9	56.4	47.2	56.9	44.9
19:15 to 19:30	48.6	56.5	55.8	55.1	47.6	56.5	45.1
19:30 to 19:45	48.5	46.9	56.9	57.6	45.8	56.9	54
19:45 to 20:00	45.9	46.8	55.7	55.7	45.6	56	53.5
20:00 to 20:15	46.2	46.7	56	55.1	45.2	55.4	43.4
20:15 to 20:30	45.2	45.2	55.3	54.8	47.4	55.5	45.7
20:30 to 20:45	44.8	45	53.6	54.5	56	55.2	53.2
20:45 to 21:00	45.5	42.5	53	54	53.5	55.6	53.3
21:00 to 21:15	54.6	44.2	53	54	55.3	54.9	50
21:15 to 21:30	51.8	42.9	53.9	54	53.3	54.6	50.5
21:30 to 21:45	42.8	43.8	52.9	49.2	51.6	51.4	53
21:45 to 22:00	40.6	41.6	52.3	50.8	52.8	54.8	51.6
22:00 to 22:15	43.8	39.9	52.6	48.6	53.8	54.8	48.2
22:15 to 22:30	40.7	42.4	52.1	51.4	60.3	53	49.3
22:30 to 22:45	39.3	52.5	52.3	50.8	52.5	52.3	46.4
22:45 to 23:00	39	50.4	50.4	49.5	49.2	48.4	48.3
23:00 to 23:15	49.3	40	50.2	48.7	51	52.8	47.8
23:15 to 23:30	44.8	36.8	48.2	50.5	53.2	50	46.8
23:30 to 23:45	50.1	40	49.1	43.2	50.9	52.2	48.4
23:45 to 00:00	48.9	35.8	49.7	47	49.8	48.7	46.7

# 001 Adjacent to carpark – NGARA2

Ngara 2

	H						
	Mon	Tue	Wed	Thu	Fri	Sat	Sun
	23/03/2020	24/03/2020	25/03/2020	26/03/2020	27/03/2020	28/03/2020	29/03/2020
00:00 to 00:15	45.3	43.5	44	48.1	39.7	47.6	47.4
00:15 to 00:30	44.5	46.5	45	49.3	36.5	48.7	42.9
00:30 to 00:45	47.8	44.2	38.8	42.9	37.9	50.4	40.4
00:45 to 01:00	43.6	40.5	46.6	41.7	33.8	47.3	41.5
01:00 to 01:15	43.8	45.5	37.9	46.5	31.4	44.8	32.6
01:15 to 01:30	42	40.9	39	46.4	35.9	43.2	36
01:30 to 01:45	45	42.1	45.2	47.1	41.9	44.8	47.4
01:45 to 02:00	38.3	46.8	45.8	48	46	42	42.3
02:00 to 02:15	34.9	27.4	51.9	41.1	44.9	40.3	44.4
02:15 to 02:30	44.8	34.8	53.9	42	38.3	33.1	42
02:30 to 02:45	48.7	35.4	56.5	45.3	48.2	37.5	45.5
02:45 to 03:00	47.3	39.5	56	48.5	48.9	37.4	47.9
03:00 to 03:15	45.2	37.7	42.4	48.1	43.2	37.6	44.8
03:15 to 03:30	44.8	40.6	39.1	45.8	48	35.3	45.6
03:30 to 03:45	51.2	52.6	49.4	50	46.2	40	51.3
03:45 to 04:00	50.7	52.3	52.6	46.6	51	39	49.8
04:00 to 04:15	51.1	52.4	51.2	51.4	51.6	38.8	48.5
04:15 to 04:30	53.9	54.6	55.2	54.1	53.3	42.8	50.9
04:30 to 04:45	54.2	46.1	54.9	53.8	45.5	51.9	52.8
04:45 to 05:00	56.6	45.6	55.6	55.5	46.6	53.4	51.6
05:00 to 05:15	56.9	57.2	56.9	57.4	55.3	52.1	49.2
05:15 to 05:30	57	59.6	57.5	56.8	56.9	53.7	53.3
05:30 to 05:45	59.6	58.9	58.9	57.7	58.4	56.1	53.4
05:45 to 06:00	60.4	59.7	60	60.5	59.8	56.6	56.2
06:00 to 06:15	59	49.6	59.4	61	59	46.7	55.3
06:15 to 06:30	60.3	50.7	61.3	62.5	60.9	47.4	55.9
06:30 to 06:45	64.4	62.6	52.5	64.5	63.5	48.5	56.3
06:45 to 07:00	65.3	64.2	56.4	64.8	64.3	48.9	56.4
07:00 to 07:15	64.9	66.6	56.8	64.7	65	58.1	57.3
07:15 to 07:30	64.8	66.2	58.2	67	63.7	58.1	57.3
07:30 to 07:45	64.4	65.9	68.2	66.9	62.5	58.7	58.1
07:45 to 08:00	64.1	66.9	67.3	65.7	65	59.3	59.4
08:00 to 08:15	54.5	65.9	67.7	64.1	63.4	59.1	58.1
08:15 to 08:30	53.8	60.8	67.9	63	65.1	59.8	57.6
08:30 to 08:45	55.8	59.9	68.2	62.2	64.6	62	60.1
08:45 to 09:00	55.5	60.9	68.1	62.3	63.8	61.2	60.2
09:00 to 09:15	53.6	62	63.7	66.3	53.3	60.3	59.9
09:15 to 09:30	52	63.7	65.2	60.8	52.9	60.6	60.5
09:30 to 09:45	53.4	64.8	67.5	63.4	65.2	60.5	59.9
09:45 to 10:00	53	65.5	65.9	63	65.1	59.3	59.9
10:00 to 10:15	53.9	61	55.6	63.6	54.9	59.6	59.8
10:15 to 10:30	54.6	63.9	56.8	66.1	55.4	60.3	59.8
10:30 to 10:45	55.5	65	65.9	63.5	52.9	60.7	59.8
10:45 to 11:00	54.1	65.6	65.1	63.4	54	60.8	60.1
11:00 to 11:15	52.4	66.7	67	64.3	52.7	50.8	50.1
11:15 to 11:30	52.5	71.2	69	64.1	52.7	50.6	50.6
11:30 to 11:45	54.3	65.9	66.4	65.4	63.8	50.2	60.4
11:45 to 12:00	55.7	66.2	67.9	65.2	66.1	50.4	60.8
12:00 to 12:15	55	67.4	64.7	54.3	56.4	53.1	59.9
12:15 to 12:30	55.8	64.7	64.6	52.1	53.1	50.4	60.6
12:30 to 12:45	52.7	54.7	63.2	52.8	52.3	49.9	59.9
12:45 to 13:00	51.4	55.7	62.5	51.5	53.6	50	58.6
13:00 to 13:15	52.9	64.5	65	53.1	53.4	59.6	50.7
13:15 to 13:30	53.4	64.3	64.4	53.2	54.4	60	51.9
13:30 to 13:45	53.8	67.4	65	54.1	53	60.3	53.9
13:45 to 14:00	52.4	67.6	66	54.5	52.4	60.2	51.1
14:00 to 14:15	53.7	67.3	65.9	59.6	52.7	60.5	51
14:15 to 14:30	54	67.9	66	59.9	53.7	60.6	50.5
14:30 to 14:45	54.8	65.4	65	50	62.3	60.9	50.1
14:45 to 15:00	53.3	65.7	66.4	52.5	62.3	61.1	50.4
15:00 to 15:15	54.8	55.8	64.6	55.4	52.6	60.1	50
15:15 to 15:30	54.9	53.6	61.7	53.2	52.9	60.4	48
15:30 to 15:45	54.4	51.7	61.7	51.9	51.9	48.5	59.3
15:45 to 16:00	53.4	51.5	62.3	50.4	51.8	49.7	60.6
16:00 to 16:15	51.7	62.4	61.6	50.3	51.8	49	59.2
16:15 to 16:30	52.1	62.2	60.6	50	51.4	48.7	58.9
16:30 to 16:45	52.3	60.7	60.2	60.5	50.7	47.4	57.3
16:45 to 17:00	50.8	60.2	60	59.9	51.2	47.4	56.4
17:00 to 17:15	51.8	60.2	59.2	58.9	51.1	58.5	57.5
17:15 to 17:30	51.2	60	61.4	60.4	60	58.7	62.4
17:30 to 17:45	51.1	58.8	60.2	60	59.9	58.3	60.3
17:45 to 18:00	49.6	60.6	59.8	59.4	60.4	59.9	59.1
18:00 to 18:15	47.3	57.8	58.2	59	58.5	56.5	54.9
18:15 to 18:30	48.4	56.9	57.2	57.5	57.4	56.9	55.9
18:30 to 18:45	46.8	57.3	56.5	55.5	55.5	55.7	54.1
18:45 to 19:00	45.1	57	57.5	56	55	55.7	52.1
19:00 to 19:15	44.5	55.6	54.9	54.1	55.9	54.9	52.1
19:15 to 19:30	44.5	54.3	55.1	55.3	55.6	53.9	53.2
19:30 to 19:45	54	54.5	55.7	54.6	55.5	52.6	51.6
19:45 to 20:00	54	53.2	53.3	49.7	53.2	50.9	49.7
20:00 to 20:15	55.4	52.2	54.3	40.7	55.1	43.8	52.2
20:15 to 20:30	51.6	53.6	54.8	40.7	53.9	42.7	51.4
20:30 to 20:45	46.6	51.3	54.6	46.7	53.6	53	48.1
20:45 to 21:00	50.9	51.1	51.4	43	54.1	51.2	50.4
21:00 to 21:15	51.5	53.3	51.9	39.6	43.1	52.6	49.1
21:15 to 21:30	48.5	51.1	49	45	40.3	51	51.5
21:30 to 21:45	50	49.5	49.4	54.6	40.6	51.8	49.4
21:45 to 22:00	49	47.7	50.8	55.5	40.9	48.1	47.9
22:00 to 22:15	51.2	53.4	50.4	63.9	40.4	48.2	45.7
22:15 to 22:30	49.6	57	50.9	62.5	41.2	50.4	44.1
22:30 to 22:45	45.7	54.2	46.3	45.2	39.4	49	46.9
22:45 to 23:00	49.2	46.7	50.4	49.1	40.5	44.7	45.9
23:00 to 23:15	48.8	38.6	47.3	48.7	39.9	49.5	45
23:15 to 23:30	44.2	39.7	50.2	49	37.3	40	44.2
23:30 to 23:45	45	44.5	46.9	46.5	36.1	45.7	43.1
23:45 to 00:00	41.1	47.1	45.7	44.1	33.8	46.1	40.3

# 001 Adjacent to carpark – NGARA2

Ngara 2

H	Mon	Tue
	30/03/2020	31/03/2020
00:00 to 00:15	46.4	46.5
00:15 to 00:30	46.3	41.5
00:30 to 00:45	45	46.3
00:45 to 01:00	33.2	46.5
01:00 to 01:15	44.6	39.6
01:15 to 01:30	42.6	42.4
01:30 to 01:45	43.5	43.9
01:45 to 02:00	40.6	41.1
02:00 to 02:15	35.1	42.6
02:15 to 02:30	44.8	40.7
02:30 to 02:45	46.5	45.1
02:45 to 03:00	46.5	48.3
03:00 to 03:15	50	43.6
03:15 to 03:30	40.3	47.7
03:30 to 03:45	48.6	51.6
03:45 to 04:00	49.9	50.5
04:00 to 04:15	52.4	52.2
04:15 to 04:30	54.9	54.2
04:30 to 04:45	55.6	54.5
04:45 to 05:00	54.8	53.5
05:00 to 05:15	55.4	55.4
05:15 to 05:30	57.3	58.3
05:30 to 05:45	58.6	59
05:45 to 06:00	59	59.9
06:00 to 06:15	59.6	59.1
06:15 to 06:30	63.9	92.8
06:30 to 06:45	63.7	0
06:45 to 07:00	64.3	0
07:00 to 07:15	65.3	0
07:15 to 07:30	65.4	0
07:30 to 07:45	62.4	0
07:45 to 08:00	62.7	0
08:00 to 08:15	63.5	0
08:15 to 08:30	62.1	0
08:30 to 08:45	62.6	0
08:45 to 09:00	65.3	0
09:00 to 09:15	62.8	0
09:15 to 09:30	61.5	0
09:30 to 09:45	62.2	0
09:45 to 10:00	62.9	0
10:00 to 10:15	65	0
10:15 to 10:30	66.5	0
10:30 to 10:45	65.9	0
10:45 to 11:00	64.5	0
11:00 to 11:15	63.9	0
11:15 to 11:30	64.2	0
11:30 to 11:45	64.4	0
11:45 to 12:00	65.9	0
12:00 to 12:15	65	0
12:15 to 12:30	64.1	0
12:30 to 12:45	64.1	0
12:45 to 13:00	63	0
13:00 to 13:15	62.1	0
13:15 to 13:30	64.9	0
13:30 to 13:45	63.2	0
13:45 to 14:00	63.3	0
14:00 to 14:15	65.5	0
14:15 to 14:30	64.1	0
14:30 to 14:45	65	0
14:45 to 15:00	65.3	0
15:00 to 15:15	65.9	0
15:15 to 15:30	64	0
15:30 to 15:45	63.9	0
15:45 to 16:00	61.7	0
16:00 to 16:15	60.3	0
16:15 to 16:30	59.7	0
16:30 to 16:45	58.8	0
16:45 to 17:00	58.4	0
17:00 to 17:15	58	0
17:15 to 17:30	59.2	0
17:30 to 17:45	61	0
17:45 to 18:00	58.8	0
18:00 to 18:15	55.3	0
18:15 to 18:30	55.8	0
18:30 to 18:45	55.3	0
18:45 to 19:00	52.4	0
19:00 to 19:15	53.1	0
19:15 to 19:30	52.6	0
19:30 to 19:45	51.6	0
19:45 to 20:00	52.5	0
20:00 to 20:15	48.4	0
20:15 to 20:30	48.8	0
20:30 to 20:45	49.7	0
20:45 to 21:00	50.4	0
21:00 to 21:15	46.1	0
21:15 to 21:30	45.9	0
21:30 to 21:45	50	0
21:45 to 22:00	47.2	0
22:00 to 22:15	47.4	0
22:15 to 22:30	43.4	0
22:30 to 22:45	45.2	0
22:45 to 23:00	46.2	0
23:00 to 23:15	44.8	0
23:15 to 23:30	43.4	0
23:30 to 23:45	45.2	0
23:45 to 00:00	44.7	0

# 002 Central location –NGARA1

## Ngara1

Limit Standard	Limit 168m
Limit outside Standard	High Noise 168m
Sun	
	1/03/2020
00:00 to 00:15	53.3
00:15 to 00:30	53.5
00:30 to 00:45	52
00:45 to 01:00	51.4
01:00 to 01:15	49.7
01:15 to 01:30	47.7
01:30 to 01:45	49.1
01:45 to 02:00	47.8
02:00 to 02:15	49.7
02:15 to 02:30	48.8
02:30 to 02:45	45.8
02:45 to 03:00	47.5
03:00 to 03:15	44.4
03:15 to 03:30	48
03:30 to 03:45	48.2
03:45 to 04:00	50.7
04:00 to 04:15	49
04:15 to 04:30	48.4
04:30 to 04:45	48.7
04:45 to 05:00	52.6
05:00 to 05:15	50.9
05:15 to 05:30	57.6
05:30 to 05:45	56.3
05:45 to 06:00	56.3
06:00 to 06:15	57.5
06:15 to 06:30	58.3
06:30 to 06:45	57.4
06:45 to 07:00	58.9
07:00 to 07:15	58.2
07:15 to 07:30	58.9
07:30 to 07:45	59
07:45 to 08:00	60.3
08:00 to 08:15	61.2
08:15 to 08:30	60.6
08:30 to 08:45	60.8
08:45 to 09:00	61
09:00 to 09:15	61.2
09:15 to 09:30	60.7
09:30 to 09:45	60.8
09:45 to 10:00	62.5
10:00 to 10:15	60.8
10:15 to 10:30	61.1
10:30 to 10:45	61.5
10:45 to 11:00	61.4
11:00 to 11:15	61.3
11:15 to 11:30	61.8
11:30 to 11:45	61.7
11:45 to 12:00	62.5
12:00 to 12:15	50.9
12:15 to 12:30	50.9
12:30 to 12:45	51.4
12:45 to 13:00	51.7
13:00 to 13:15	52.2
13:15 to 13:30	51.9
13:30 to 13:45	51.7
13:45 to 14:00	52
14:00 to 14:15	52.3
14:15 to 14:30	51.4
14:30 to 14:45	51.1
14:45 to 15:00	51.9
15:00 to 15:15	51.9
15:15 to 15:30	51.9
15:30 to 15:45	52.1
15:45 to 16:00	51.7
16:00 to 16:15	61.8
16:15 to 16:30	61.6
16:30 to 16:45	61.9
16:45 to 17:00	59.8
17:00 to 17:15	62.4
17:15 to 17:30	62.1
17:30 to 17:45	64.9
17:45 to 18:00	61.1
18:00 to 18:15	60.7
18:15 to 18:30	63
18:30 to 18:45	60.3
18:45 to 19:00	59.4
19:00 to 19:15	62.4
19:15 to 19:30	60.4
19:30 to 19:45	58.2
19:45 to 20:00	55.8
20:00 to 20:15	54.8
20:15 to 20:30	53.5
20:30 to 20:45	52.9
20:45 to 21:00	52.5
21:00 to 21:15	53.6
21:15 to 21:30	52.4
21:30 to 21:45	53.4
21:45 to 22:00	52.2
22:00 to 22:15	51.5
22:15 to 22:30	49.3
22:30 to 22:45	49.3
22:45 to 23:00	48.7
23:00 to 23:15	46.3
23:15 to 23:30	48.3
23:30 to 23:45	47.3
23:45 to 00:00	47.1

# 002 Central location –NGARA1

## Ngara1

Limit Standard Limit outside Standard	73 75	Limit 56m High noise 56	79 81	Limit 18m High Noise 18m	85 87	Limit 8m High Noise 8m	91 93
	Mon	Tue	Wed	Thu	Fri	Sat	Sun
	2/03/2020	3/03/2020	4/03/2020	5/03/2020	6/03/2020	7/03/2020	8/03/2020
00:00 to 00:15	42.4	47.7	38.5	37.3	50.2	0	0
00:15 to 00:30	44.7	45.2	37.6	37.1	49.9	0	0
00:30 to 00:45	45.1	43.2	37.9	34.7	49.3	0	0
00:45 to 01:00	40.6	44.7	39.9	35.6	48.8	0	0
01:00 to 01:15	46.8	43.9	38.6	36	50	0	-10
01:15 to 01:30	40.7	43.2	38	36.5	51.4	0	-10
01:30 to 01:45	43.5	45.1	38	35.5	51	0	-10
01:45 to 02:00	41.4	41.1	38.4	37.1	0	0	-10
02:00 to 02:15	41.7	42	36.9	33.6	0	0	-10
02:15 to 02:30	44.4	47.3	38.3	38.2	0	0	-10
02:30 to 02:45	45.5	43.5	39.4	39.6	0	0	-10
02:45 to 03:00	46.4	48	40.1	36.9	0	0	-10
03:00 to 03:15	47	47	39.4	34.1	0	0	0
03:15 to 03:30	48	49.5	41.3	37.6	0	0	0
03:30 to 03:45	49.1	51	40.6	41.8	0	0	0
03:45 to 04:00	50.6	52.5	43	42.6	0	0	0
04:00 to 04:15	51.3	51.5	42.4	-10	-10	0	-10
04:15 to 04:30	54.8	52.6	45.6	-10	-10	0	-10
04:30 to 04:45	55.6	56.4	45.5	-10	-10	0	-10
04:45 to 05:00	55.6	56.9	47.2	-10	-10	0	-10
05:00 to 05:15	55.7	55.9	46.6	-10	0	0	0
05:15 to 05:30	59.4	65.1	49.8	-10	0	0	0
05:30 to 05:45	61	62.9	53.9	-10	0	0	0
05:45 to 06:00	59.6	60.4	52.5	-10	0	0	0
06:00 to 06:15	62.2	60.1	49.8	-10	0	0	0
06:15 to 06:30	62.1	61.6	53	-10	0	0	0
06:30 to 06:45	61.9	63.1	52.7	-10	0	0	0
06:45 to 07:00	67.8	67.1	59.7	-10	0	0	0
07:00 to 07:15	67.8	65.3	58.3	57.5	69.1	61.4	58.6
07:15 to 07:30	68.2	71.8	55.9	59	68.9	59.8	59.1
07:30 to 07:45	68.9	67.7	55.9	60.8	70.7	59.9	48.9
07:45 to 08:00	64.4	64.9	56.8	60.4	67.1	61.1	49.8
08:00 to 08:15	65.8	65	60.7	57.8	69.4	-10	49.5
08:15 to 08:30	65.3	63.8	56.1	65.2	67.4	-10	50.3
08:30 to 08:45	65	66.9	55.6	60.9	67.2	-10	50.6
08:45 to 09:00	64.7	68.1	56.2	59.1	67.9	-10	50.6
09:00 to 09:15	64.8	60.4	54.5	54.9	69.6	-10	51.3
09:15 to 09:30	62.9	62.8	53	57.7	68.6	-10	51.2
09:30 to 09:45	66.1	63.6	55.3	59.4	69.1	-10	51.1
09:45 to 10:00	70.2	65.4	59.7	59.1	68.8	-10	51
10:00 to 10:15	67.3	63.6	56.9	58.4	68.6	-10	50.6
10:15 to 10:30	63.3	64.4	56.4	60.7	69.3	-10	50.6
10:30 to 10:45	66.6	63.6	58.6	59.6	69.7	-10	51.6
10:45 to 11:00	66.5	63.7	55.7	59.1	67.8	-10	51
11:00 to 11:15	66.8	63.7	59.2	61	58.7	-10	50.8
11:15 to 11:30	65.8	63	57.3	61.6	57.8	-10	51.6
11:30 to 11:45	55.2	63.4	68.3	61.3	61.4	-10	52.3
11:45 to 12:00	53.5	65.6	67.3	61.5	60	-10	51.2
12:00 to 12:15	55.4	58.1	54.2	60.8	57.8	-10	51.4
12:15 to 12:30	55.4	58.1	52.1	59.7	58.5	-10	51
12:30 to 12:45	53.6	62.4	52.2	54.4	59.5	-10	51.2
12:45 to 13:00	52.1	63.8	55.2	53	59.8	-10	50.9
13:00 to 13:15	53.7	53.9	58.5	56.2	61.1	-10	50.4
13:15 to 13:30	56.2	53.6	57.7	61	60.1	-10	50.1
13:30 to 13:45	56.4	56	57.6	62.1	58.2	-10	50.9
13:45 to 14:00	57.4	55.2	54.7	60.8	57.5	-10	50.7
14:00 to 14:15	56.4	56.5	54.1	64.1	61.5	-10	51
14:15 to 14:30	54.9	55.5	54.9	60.5	60.1	-10	50.7
14:30 to 14:45	58.7	57.1	63.5	62.1	60.6	-10	51.4
14:45 to 15:00	57.8	57	64.1	59.7	56.5	-10	52.4
15:00 to 15:15	57.2	55	64.3	61	54.2	-10	52.7
15:15 to 15:30	58	59	63.5	60	53.5	-10	53.2
15:30 to 15:45	51.6	53.4	63.4	53.9	52	-10	53
15:45 to 16:00	52.5	53.7	63.8	52.9	53.9	-10	52.3
16:00 to 16:15	63.7	54	54.9	52.8	52.7	-10	52.2
16:15 to 16:30	63.7	53.7	53.5	53	52.7	-10	53.8
16:30 to 16:45	52.8	54.4	53.3	54.4	52.2	-10	52.3
16:45 to 17:00	52.8	54.2	55.4	52.1	52.4	-10	52.7
17:00 to 17:15	61.3	54.5	62.4	53.5	53.3	-10	53.1
17:15 to 17:30	63.4	53.5	62.2	52.4	52.2	-10	49.7
17:30 to 17:45	62.5	53	62.8	53.3	61	-10	49.8
17:45 to 18:00	61.7	53.9	64.8	53.1	63.3	-10	51.7
18:00 to 18:15	61.9	54.5	64.6	54	54.3	-10	52.6
18:15 to 18:30	64.8	55	66.7	52	51.7	-10	52.6
18:30 to 18:45	60.7	48.3	58.5	48.7	59.5	-10	46.6
18:45 to 19:00	57.2	48.5	57.9	48	59.9	-10	46.9
19:00 to 19:15	46.7	59.4	57.5	46.4	58.6	-10	56.9
19:15 to 19:30	47.3	66	56.7	45.3	58.7	-10	55.6
19:30 to 19:45	45.2	60.3	47.1	47.9	48.8	-10	55.7
19:45 to 20:00	45	56	47	45.7	48.4	-10	54.9
20:00 to 20:15	44	46.7	47.3	46.3	46.6	-10	54.6
20:15 to 20:30	44.9	45.4	47.1	46.3	47.9	-10	54.2
20:30 to 20:45	45.6	45.8	55.6	55.4	58.2	-10	54.3
20:45 to 21:00	43.2	44.8	56	54.4	54.4	-10	53.7
21:00 to 21:15	52.2	52.9	55	45.9	57.5	-10	53.3
21:15 to 21:30	49.9	53.9	52.6	46.5	56.6	-10	53.9
21:30 to 21:45	52.2	41.7	41.1	55.3	0	0	42.8
21:45 to 22:00	54.6	44.5	39.5	57	0	0	39.7
22:00 to 22:15	45.9	50.9	52.2	52.3	0	0	39.5
22:15 to 22:30	54.8	51.1	49	51.1	0	0	39.8
22:30 to 22:45	47.8	50.3	50.2	50.8	0	0	49.8
22:45 to 23:00	46.3	49.9	49.8	51.9	0	0	51.5
23:00 to 23:15	47	51.2	38.4	54.3	0	0	49
23:15 to 23:30	48.3	48.3	36.6	51.2	0	0	47.5
23:30 to 23:45	45.5	40.7	38.6	48	0	0	36.9
23:45 to 00:00	46.5	40.3	38.2	47.6	0	0	37.6

# 002 Central location –NGARA1

## Ngara1

Limit Standard  
Limit outside Standard

	Mon	Tue	Wed	Thu	Fri	Sat	Sun
	9/03/2020	10/03/2020	11/03/2020	12/03/2020	13/03/2020	14/03/2020	15/03/2020
00:00 to 00:15	49.6	-10	0	-10	44.5	51.5	50.8
00:15 to 00:30	48.1	-10	0	-10	47.5	50.1	48.1
00:30 to 00:45	44.8	-10	0	-10	48.1	48.4	47.5
00:45 to 01:00	44.2	-10	0	-10	48.4	50.4	47.7
01:00 to 01:15	45.8	-10	0	0	43.2	49.5	48.6
01:15 to 01:30	46	-10	0	0	44.2	47.6	49.2
01:30 to 01:45	47.5	-10	0	-10	51.2	50.6	49.6
01:45 to 02:00	47.8	-10	0	-10	48.5	50	46.8
02:00 to 02:15	29.9	-10	0	-10	47.5	48.4	46.6
02:15 to 02:30	37.7	-10	0	-10	47.2	49.4	42.3
02:30 to 02:45	48.1	-10	0	0	38.5	50.2	34.1
02:45 to 03:00	46.1	-10	0	0	41.3	49.1	34.7
03:00 to 03:15	53	-10	0	0	50.7	45.8	36.8
03:15 to 03:30	54.9	-10	0	0	48.8	46.4	34.1
03:30 to 03:45	50.9	0	0	0	53.5	49.6	41.2
03:45 to 04:00	53	0	0	0	54.5	50.4	38.3
04:00 to 04:15	52.5	0	0	0	52.2	51.1	39.3
04:15 to 04:30	53.2	0	0	0	55.8	52	37.5
04:30 to 04:45	56.1	-10	0	0	57.1	54.2	41
04:45 to 05:00	56.2	-10	0	0	57.6	56	43.5
05:00 to 05:15	56	0	0	0	63.1	54.4	42
05:15 to 05:30	57.3	0	0	0	61.1	54.5	42.1
05:30 to 05:45	49.8	-10	-10	0	61.8	56.6	44.8
05:45 to 06:00	52.3	-10	-10	0	59.9	57.3	45.7
06:00 to 06:15	50.9	-10	0	-10	60.6	58.2	46.3
06:15 to 06:30	53.2	-10	0	-10	61.8	57.9	46.1
06:30 to 06:45	64.8	-10	-10	-10	52.7	59.7	47.1
06:45 to 07:00	65.3	-10	-10	-10	54.4	59.7	47.3
07:00 to 07:15	54.8	53.9	-10	61.1	64.4	58.6	47.4
07:15 to 07:30	54.4	-10	-10	61.9	65	59.1	47.2
07:30 to 07:45	54.9	0	0	70.7	67	50.5	49.7
07:45 to 08:00	53.8	0	0	70	67.4	50.5	50.3
08:00 to 08:15	52.7	-10	-10	60.7	63.3	49.9	49.2
08:15 to 08:30	51.1	-10	-10	60.8	62.2	50.1	49.8
08:30 to 08:45	62	-10	-10	61.3	61.5	50.2	49.8
08:45 to 09:00	61.6	-10	-10	58.8	61.4	51.5	51.2
09:00 to 09:15	53.9	0	-10	53.6	-10	51	51.5
09:15 to 09:30	54.7	0	-10	54.4	-10	51	51.1
09:30 to 09:45	54	-10	-10	56.3	-10	51.1	51.3
09:45 to 10:00	53.2	-10	-10	55.3	-10	51.8	50.7
10:00 to 10:15	62.9	-10	-10	55.8	-10	51.3	50.8
10:15 to 10:30	63.6	-10	-10	55.5	-10	51.2	51
10:30 to 10:45	53.5	-10	-10	53.2	-10	51.1	50
10:45 to 11:00	54	-10	-10	56.1	56.3	51.5	50.4
11:00 to 11:15	53	-10	-10	55	55.6	51.5	51.2
11:15 to 11:30	52.5	-10	-10	54.6	52.4	51.7	57.9
11:30 to 11:45	53.7	0	-10	53.2	51.6	51.6	50.6
11:45 to 12:00	53.9	0	-10	54.4	51.9	51.7	50.6
12:00 to 12:15	53.7	-10	-10	52	51.2	51	50.6
12:15 to 12:30	54.7	-10	-10	53.4	51.4	50.9	50.7
12:30 to 12:45	54.5	0	-10	53.2	50.7	51.3	50.5
12:45 to 13:00	52.7	0	-10	52.3	51.9	51.6	50.8
13:00 to 13:15	53.5	-10	-10	54.1	51.1	51.4	50.2
13:15 to 13:30	53.3	-10	-10	52.5	52.3	51	49.9
13:30 to 13:45	53.8	-10	-10	53.3	52.5	50.6	50
13:45 to 14:00	53.5	-10	-10	54.1	53.1	50.8	50.6
14:00 to 14:15	53.7	0	-10	54.4	52.9	51.2	50.6
14:15 to 14:30	53.5	0	-10	54.4	52.9	50.1	50.3
14:30 to 14:45	63.6	0	-10	55	53.6	50.6	49.6
14:45 to 15:00	64.8	0	-10	56.4	52.4	50.8	50.8
15:00 to 15:15	55.7	-10	-10	55.7	52.8	51	51.8
15:15 to 15:30	53.7	-10	-10	53.8	52.2	51.2	53.1
15:30 to 15:45	-10	-10	-10	53.6	51.8	50.2	52
15:45 to 16:00	-10	-10	-10	54.2	51	50.5	51.7
16:00 to 16:15	-10	-10	-10	54.4	51.7	51.6	51.4
16:15 to 16:30	-10	-10	-10	54.3	51.9	50.1	49.8
16:30 to 16:45	-10	-10	-10	53	51.3	50.3	51.5
16:45 to 17:00	-10	-10	-10	52.8	51.1	49.5	50.2
17:00 to 17:15	-10	0	-10	51	51.4	49.9	52.8
17:15 to 17:30	-10	0	-10	53.6	50.2	49	58.7
17:30 to 17:45	-10	-10	-10	53	50.5	48.8	54.4
17:45 to 18:00	-10	-10	-10	52	49.9	49.4	56.1
18:00 to 18:15	-10	-10	-10	50.2	50.3	50.1	52.7
18:15 to 18:30	-10	-10	-10	49.7	49.1	47.2	51.3
18:30 to 18:45	-10	0	-10	58.9	48.3	47.3	47.3
18:45 to 19:00	-10	0	-10	59.6	48.3	47.9	45.4
19:00 to 19:15	-10	0	-10	48.4	57.3	46.1	47.7
19:15 to 19:30	-10	0	-10	46.5	57.9	45.3	46.4
19:30 to 19:45	-10	0	-10	47.8	56.1	46.4	47.5
19:45 to 20:00	-10	0	-10	47.6	55.3	46.1	50.4
20:00 to 20:15	-10	0	-10	46.7	56.1	45.1	45.1
20:15 to 20:30	-10	0	-10	46.6	54.8	45.2	46.1
20:30 to 20:45	0	0	-10	45.6	54.5	44.9	48.1
20:45 to 21:00	0	0	-10	45	55.8	44.3	47.7
21:00 to 21:15	-10	0	-10	53.9	55.3	45.4	47.5
21:15 to 21:30	-10	0	-10	53.7	55.2	45.5	47.3
21:30 to 21:45	-10	0	0	52.9	53.8	53.9	43.6
21:45 to 22:00	-10	0	0	52.5	53.3	53.5	42.6
22:00 to 22:15	-10	0	-10	53.7	54.1	43.9	40
22:15 to 22:30	-10	0	-10	53.5	53.1	43.6	41.5
22:30 to 22:45	-10	0	-10	43.8	52.8	52.5	40.1
22:45 to 23:00	-10	0	-10	42.9	52.2	51.6	39.8
23:00 to 23:15	-10	0	0	52.3	52	50.3	41.3
23:15 to 23:30	-10	0	0	51	52.4	50.8	39.8
23:30 to 23:45	0	0	-10	48.4	53.1	41.9	39.7
23:45 to 00:00	0	0	-10	47.7	50.3	38.2	39.5

# 002 Central location –NGARA1

## Ngara1

Limit Standard  
Limit outside Standard

	Mon	Tue	Wed	Thu	Fri	Sat	Sun
	16/03/2020	17/03/2020	18/03/2020	19/03/2020	20/03/2020	21/03/2020	22/03/2020
00:00 to 00:15	38.6	46.6	49.2	46.2	52.8	55.6	53.1
00:15 to 00:30	36.9	45.9	46.2	48.5	46.1	53.8	52.9
00:30 to 00:45	39.1	45.8	46.9	44.9	47.1	53.7	54.2
00:45 to 01:00	37.2	46	44.2	49.3	48.7	53.2	51.9
01:00 to 01:15	37.1	47.1	46.6	49.6	47.5	52.3	49.8
01:15 to 01:30	34.7	47.8	45	46.3	47.5	50.8	52
01:30 to 01:45	38.7	48.5	36.4	46.8	50.5	48.7	53.3
01:45 to 02:00	36.6	47.3	37.5	51	47.9	51.5	53.3
02:00 to 02:15	36.3	45.8	47.7	48.2	49.9	51.2	53.3
02:15 to 02:30	39.4	45.9	47.5	46.3	54.2	52.1	52.6
02:30 to 02:45	38.8	50.1	48.2	46.1	53.4	51.4	52.8
02:45 to 03:00	40.2	49.8	48.2	50.6	53.9	53.5	50.9
03:00 to 03:15	38.3	49.6	40.6	47.8	53.6	52.4	53.3
03:15 to 03:30	39.6	47	39.4	48.7	53.7	49.7	52.1
03:30 to 03:45	41.7	50	50.5	51.5	54.2	49.3	51.7
03:45 to 04:00	41.8	51.4	51.7	50.2	54.9	48	51.3
04:00 to 04:15	44.4	51.5	50.7	52.7	55.3	47.4	50.7
04:15 to 04:30	44.1	53.7	54	53.9	56.3	49.7	53.5
04:30 to 04:45	46	55.7	54.6	54.5	56.5	52.8	54.5
04:45 to 05:00	47.5	56.7	57.2	55.7	56.5	53.8	54.4
05:00 to 05:15	46.3	55.9	57.6	56.2	57.4	55.7	51.9
05:15 to 05:30	47.4	57.9	58.6	58.7	58.1	54.7	53.4
05:30 to 05:45	48.4	48.2	58.6	58.6	58.4	56.7	54.5
05:45 to 06:00	52.1	49.7	59.8	59.6	61.1	57.9	55
06:00 to 06:15	53.3	48.7	50.2	62.4	62.6	58.8	55.6
06:15 to 06:30	53.6	53.1	54.2	63.1	63.8	58.3	56.1
06:30 to 06:45	59.4	54.6	53.8	68.1	67.7	59.6	57.3
06:45 to 07:00	59.8	55.4	54.2	69.9	68	58.4	57.9
07:00 to 07:15	57.5	54	54.9	65.6	68.4	58.3	56.9
07:15 to 07:30	56.2	58.1	54.9	67.6	72.2	59.2	58.2
07:30 to 07:45	55.4	55.8	56.9	67.9	71.7	59.4	59.2
07:45 to 08:00	55.8	54.2	54	68.1	69.7	59.8	59.6
08:00 to 08:15	60.5	52.1	55.6	66.6	67.7	60.1	59.3
08:15 to 08:30	57	49.4	57.4	63	67.5	59.8	60.2
08:30 to 08:45	56.8	56.4	60.2	61.4	71.4	60.2	59.6
08:45 to 09:00	59	55	59.7	66.2	68.5	60	60.6
09:00 to 09:15	51.4	51.8	57.1	60.6	78	61.1	59.1
09:15 to 09:30	54.4	57.6	56.7	63.5	66.6	60.1	59.6
09:30 to 09:45	60.8	55.9	56	67.7	66.4	60.3	59.5
09:45 to 10:00	55.7	56.2	58.4	69.7	68.7	60.1	60.2
10:00 to 10:15	55.3	56.4	57.7	67.7	67.8	61.4	60.1
10:15 to 10:30	58.3	56.9	57.2	67.5	70.5	59.4	59.3
10:30 to 10:45	54.4	54.6	57.6	67.6	53	60.1	59.8
10:45 to 11:00	55.2	54	57.4	67.2	55	59.9	59.8
11:00 to 11:15	61.7	54.6	57.9	68.7	55.4	60	59.9
11:15 to 11:30	56.4	60.6	59.6	69.1	58.5	60.6	60.1
11:30 to 11:45	58.8	61.5	59.4	68.3	58.8	60.4	59.3
11:45 to 12:00	61.6	59.1	58.9	69.9	59.2	60	59.9
12:00 to 12:15	56.3	61.3	60.6	59.9	59	60.2	61
12:15 to 12:30	57	66.8	60.6	59.7	54.1	59.6	59.5
12:30 to 12:45	52.2	54.4	58.4	57.1	58.8	50	59.3
12:45 to 13:00	49.9	52.7	59.3	58.1	56.7	50	60.6
13:00 to 13:15	55.5	63	58.8	59.9	56.7	50.6	49.5
13:15 to 13:30	57.7	59.8	58.4	57.4	53.2	50.5	51
13:30 to 13:45	57.4	55.4	58.5	59.1	54.4	50.3	48.3
13:45 to 14:00	58.1	57.1	58.2	58.7	56.2	49.8	48.7
14:00 to 14:15	55.6	54.2	59.4	59.2	56.7	50.3	49.5
14:15 to 14:30	56.5	58.8	59.2	59	59.9	50.5	49.3
14:30 to 14:45	56	56.8	60	69.2	51.8	50.5	58.8
14:45 to 15:00	57.4	55.9	59	69.3	52.3	51	58.6
15:00 to 15:15	56.2	56.9	56	69.2	52.2	50.1	60.4
15:15 to 15:30	62	60.2	61.6	70.5	52.6	49.7	58.1
15:30 to 15:45	55.5	52.5	53.1	65.9	50.5	50	62.9
15:45 to 16:00	54.8	53	51.9	62.6	51.1	49.5	59.1
16:00 to 16:15	53	53.7	51.7	61.1	51	49.7	59.5
16:15 to 16:30	53.3	51.8	52.2	60.9	50.5	48.8	57.9
16:30 to 16:45	53.5	51.3	50.6	60.5	52	49.2	57.1
16:45 to 17:00	52.4	52.1	50.4	60.4	50.5	48.4	57.6
17:00 to 17:15	53.6	50.9	52.5	59.9	49.9	49	60.1
17:15 to 17:30	50.3	50.8	49.6	59.6	50	50.9	58.5
17:30 to 17:45	54	49.9	49.9	59.3	51.1	49.1	59.5
17:45 to 18:00	52.1	49.8	49.3	60.3	49.6	47.9	59.1
18:00 to 18:15	48.8	49.9	58.5	58.8	48.7	48	61.5
18:15 to 18:30	47.3	48	58.3	57.9	46.3	47.5	56.4
18:30 to 18:45	48.8	48	56.7	57	48.9	47.6	47
18:45 to 19:00	48.4	47.7	56.8	61.4	46.9	48.5	46.6
19:00 to 19:15	46	57.1	56.1	60.9	47.5	58.1	47.2
19:15 to 19:30	51.6	55.1	55.1	60.3	47.6	58.1	47.9
19:30 to 19:45	47.9	45.2	55.6	61.1	45.6	57.8	56.5
19:45 to 20:00	45.3	45	54.8	60.7	46.6	58	56.4
20:00 to 20:15	45.1	45.8	55.4	60.2	44.2	55.3	46.3
20:15 to 20:30	45.6	44.7	54.4	60.2	48.4	54.2	46.9
20:30 to 20:45	43.8	45.5	53.7	60.2	54.9	54.1	54.6
20:45 to 21:00	44.7	43.2	53.8	59.8	55	54.4	55.3
21:00 to 21:15	54.3	42.6	52	59.4	55.8	53.5	52.7
21:15 to 21:30	51.1	42.5	53.1	58.9	53.5	54	55.8
21:30 to 21:45	42.9	41.6	52.3	58.6	51.8	50.3	56.6
21:45 to 22:00	39.7	41.6	52.8	58.6	52.2	53.6	52.4
22:00 to 22:15	42.8	38.8	52.2	56	52.8	53.6	47.3
22:15 to 22:30	39.5	40.7	52.2	56.4	56.4	52.9	52.7
22:30 to 22:45	39.5	51.9	52	57.3	51.8	51.5	56.6
22:45 to 23:00	38.9	50.9	50.7	59.2	50	50.1	56.1
23:00 to 23:15	48.4	38.2	51.2	58.2	50.2	53.8	55.2
23:15 to 23:30	46.2	36.6	48.6	57.2	53	53.6	54.5
23:30 to 23:45	49.9	37.3	51.1	56	54.6	54.1	54.2
23:45 to 00:00	47.6	37.7	49.8	56.2	56.4	53	53.8



# 002 Central location –NGARA1

## Ngara1

Limit Standard  
Limit outside Standard

	Mon	Tue	Wed	Thu	Fri	Sat	Sun
	23/03/2020	24/03/2020	25/03/2020	26/03/2020	27/03/2020	28/03/2020	29/03/2020
00:00 to 00:15	54.6	48.8	48.3	54.1	46.7	44.6	49.7
00:15 to 00:30	52.4	50.5	45.4	54.3	46.2	48.7	49.5
00:30 to 00:45	48.3	49.4	38.8	52.1	44.6	48.1	48.9
00:45 to 01:00	48.3	49.4	44.6	53.2	44.5	48.1	48.7
01:00 to 01:15	49.2	49.6	43.6	51.4	45	46.2	39.1
01:15 to 01:30	54.6	49.8	44.6	50.9	45.1	44.6	39.2
01:30 to 01:45	54.9	48.8	46.7	52.5	54.5	45.6	50.8
01:45 to 02:00	55.5	50.2	47.5	52.4	54	42.5	47.8
02:00 to 02:15	55.1	37.4	52	51.5	54.3	37.7	49.3
02:15 to 02:30	54.1	38.5	52.8	52.4	55.1	36	47.9
02:30 to 02:45	52.6	37.8	55.3	53.1	55.5	35.6	48.9
02:45 to 03:00	50.2	40.3	54.3	51.7	54.5	35.2	49.8
03:00 to 03:15	57.4	40.5	42.5	52.5	54.1	38.3	47.4
03:15 to 03:30	56.9	45.1	38.1	48.3	52.8	34.6	46.8
03:30 to 03:45	57.6	54.9	49.5	50.3	54.6	38.4	51.9
03:45 to 04:00	57.7	53.2	51.6	46	54.6	38.3	51.4
04:00 to 04:15	56.5	52.4	50.6	50.1	54.7	39.2	52.5
04:15 to 04:30	52.5	54.1	52.8	53.2	55.1	39.7	52
04:30 to 04:45	55.9	46.2	53.8	51.5	44.1	52.4	53.8
04:45 to 05:00	56.3	45.7	55.2	55	45.5	51.5	52.2
05:00 to 05:15	55.8	56.3	55.5	55.9	55.5	52.1	53.1
05:15 to 05:30	56.2	59.6	57	57.1	55.5	53.1	54.1
05:30 to 05:45	57.5	59.3	58.4	56.2	56.4	56	52.9
05:45 to 06:00	58.6	63	59.1	59.1	58.6	55.5	54.7
06:00 to 06:15	58.2	52.2	58.6	60	58.9	45.9	54.9
06:15 to 06:30	59.9	53.5	60.5	60.6	59.3	47.4	55
06:30 to 06:45	68	63.9	51.1	67.5	65.8	49.3	55.9
06:45 to 07:00	68.2	63.4	54.1	67.4	69.3	48.3	55.9
07:00 to 07:15	66.5	67.2	55	65.1	70.3	58.4	56.1
07:15 to 07:30	69.5	65.7	56.9	62.9	68.6	58.5	56
07:30 to 07:45	64.6	66.3	69.3	66.5	67.4	58.2	57.4
07:45 to 08:00	64.3	67.1	68.6	66.7	68.2	58.6	56.8
08:00 to 08:15	56.2	68.1	70.3	66.1	68.1	58.5	57.6
08:15 to 08:30	52.5	65.9	70.7	65.1	68.2	58.5	56.2
08:30 to 08:45	52.8	64.6	69.6	65.5	67.9	58.8	59.6
08:45 to 09:00	52.9	64.5	70.4	65.1	67.2	59.9	58.7
09:00 to 09:15	59.6	65.5	67	68.6	51.6	59.7	59
09:15 to 09:30	56	66.3	66.2	65.2	51.9	60.2	58.9
09:30 to 09:45	52.8	65.5	67.9	64.8	65	59.8	59.5
09:45 to 10:00	57.4	61.7	62.4	65.7	65.7	58.8	59.3
10:00 to 10:15	57.9	62.1	55.9	65.2	56.7	58.8	58.9
10:15 to 10:30	57.9	65.2	58.3	66.1	55.4	59.3	58.3
10:30 to 10:45	58	66.6	69.1	66.5	52.5	60.7	58.4
10:45 to 11:00	55.1	67.4	67.3	65.7	53.7	59.3	59.3
11:00 to 11:15	57.9	67	69.6	66	53.5	49.5	48.5
11:15 to 11:30	57.3	68.2	67.2	66.2	51.1	50.1	48.5
11:30 to 11:45	60.6	66.9	67.5	65.9	62.7	50.3	58.6
11:45 to 12:00	57.5	69.2	67.7	69.2	67.2	49.8	58.7
12:00 to 12:15	57.7	67.5	67.5	58.6	59.5	53	58.7
12:15 to 12:30	58.5	68.1	67.4	57.9	53.7	49.1	58.4
12:30 to 12:45	55.6	54.7	68.4	57.8	52.9	49.4	58.7
12:45 to 13:00	53.2	54.7	67.1	57	53.4	49.9	58.7
13:00 to 13:15	59.7	66.8	60.8	56.3	54.3	58.6	48.7
13:15 to 13:30	55.3	69.1	60.7	57.9	55.5	59.1	50
13:30 to 13:45	55.6	69	62.4	58.4	53.3	59.2	49.3
13:45 to 14:00	57.3	66.4	63.5	56.2	51.6	59.6	54.6
14:00 to 14:15	58.6	68	63.4	57	51.3	58.6	48.3
14:15 to 14:30	57.2	69.9	63.8	57.1	52.4	59.1	47.1
14:30 to 14:45	57.9	68.4	64.2	55	61.9	59.2	48.6
14:45 to 15:00	58.5	69	64.9	55.2	60.8	59.6	48.4
15:00 to 15:15	57.9	58.5	69.4	59.5	52.1	60.4	48.8
15:15 to 15:30	58.4	51.9	61.1	58.5	51.4	59.4	47.4
15:30 to 15:45	61.3	50.5	60.8	56.1	50.9	50.4	58.4
15:45 to 16:00	54.5	50.7	61.4	50	50.7	49.2	57.9
16:00 to 16:15	50.4	61.2	61	49.8	50.7	49.1	57.4
16:15 to 16:30	50.7	60.4	60.7	49.1	50.9	47.8	59.1
16:30 to 16:45	51.6	59.8	60	59.3	50.8	47	57.3
16:45 to 17:00	50.9	59.3	60.1	59.5	50.6	47.6	56.7
17:00 to 17:15	52.5	59.7	59.8	58.9	49.6	59.9	56.7
17:15 to 17:30	52	58.8	61.2	58.9	56.3	61.1	56.4
17:30 to 17:45	50.8	58.3	60	58.8	57.8	60.2	61.2
17:45 to 18:00	49.6	59.2	59.7	59.1	58.6	60.6	57.7
18:00 to 18:15	46.2	57.6	59	58.5	57.3	55.3	54.8
18:15 to 18:30	48.1	56.2	56.7	57	58	56.8	54.3
18:30 to 18:45	47.2	56.7	56.8	56	54.9	58.2	55.1
18:45 to 19:00	45.9	56.8	57.2	56.9	55.6	58	53.2
19:00 to 19:15	45	56.3	56.1	56.5	53.8	57.7	52.7
19:15 to 19:30	45.4	53.2	55.2	57.1	55.7	55.2	52.7
19:30 to 19:45	55.1	55	56.7	54.8	54	54.2	53.7
19:45 to 20:00	54.9	53.3	53.2	52.1	54.6	52.5	52.4
20:00 to 20:15	54.7	52.5	54.7	41.9	54.1	42.6	50.6
20:15 to 20:30	51.4	54.2	54.9	42.2	53.1	43.8	51.6
20:30 to 20:45	55	52.4	54.5	50	53.7	52.5	48.5
20:45 to 21:00	56	51.3	53.6	47.5	53.2	53.8	49.8
21:00 to 21:15	52.9	53.2	52.1	43.2	42.4	54.5	50.2
21:15 to 21:30	53.7	51.9	50.8	46.2	38.3	55.8	50.7
21:30 to 21:45	52.4	50	49.8	57.2	40.2	55.5	49.8
21:45 to 22:00	49.9	49.5	51.3	61.2	39.8	55.8	50.5
22:00 to 22:15	49.5	55.1	49.9	63.6	39.6	51.3	49.2
22:15 to 22:30	50.7	56.5	51.9	67.5	42.4	51	50
22:30 to 22:45	52	51.8	50.5	43.4	38.2	50.6	49.2
22:45 to 23:00	52	46.8	51.1	51	41.5	50.2	47.3
23:00 to 23:15	51.9	38.7	50.3	51.9	40.6	48.5	47.9
23:15 to 23:30	51	40.8	54.8	52	37.6	47.9	47.7
23:30 to 23:45	50.4	49.3	54.5	49.6	36	47.9	47.3
23:45 to 00:00	49.6	49.2	55.5	47.8	35.1	50.4	44.8

# 002 Central location –NGARA1

## Ngara1

Limit Standard  
Limit outside Standard

	Mon	Tue
	30/03/2020	31/03/2020
00:00 to 00:15	48.1	56.6
00:15 to 00:30	49.5	56.7
00:30 to 00:45	49.9	54.5
00:45 to 01:00	54.4	54.3
01:00 to 01:15	50.4	55.6
01:15 to 01:30	47.7	55.9
01:30 to 01:45	48.1	56.7
01:45 to 02:00	49.1	55.1
02:00 to 02:15	45.6	52.4
02:15 to 02:30	46.9	55.9
02:30 to 02:45	48.5	55.2
02:45 to 03:00	48.2	56.6
03:00 to 03:15	51	55.2
03:15 to 03:30	44.8	56.4
03:30 to 03:45	49.7	56.6
03:45 to 04:00	51.8	56.8
04:00 to 04:15	52	56.3
04:15 to 04:30	54.5	57.4
04:30 to 04:45	54.6	57.5
04:45 to 05:00	54.7	57.5
05:00 to 05:15	54.8	58.1
05:15 to 05:30	58.5	58.7
05:30 to 05:45	58.6	58.3
05:45 to 06:00	59.6	59.3
06:00 to 06:15	60.1	59.4
06:15 to 06:30	64.9	69.3
06:30 to 06:45	67.9	67.5
06:45 to 07:00	67.2	67.8
07:00 to 07:15	67	67.6
07:15 to 07:30	66.6	94.4
07:30 to 07:45	62.7	0
07:45 to 08:00	65.7	0
08:00 to 08:15	65.2	0
08:15 to 08:30	65.9	0
08:30 to 08:45	65.8	0
08:45 to 09:00	66.3	0
09:00 to 09:15	66	0
09:15 to 09:30	65.2	0
09:30 to 09:45	65.1	0
09:45 to 10:00	61.5	0
10:00 to 10:15	63.5	0
10:15 to 10:30	66.9	0
10:30 to 10:45	66.7	0
10:45 to 11:00	67.3	0
11:00 to 11:15	67.6	0
11:15 to 11:30	67.3	0
11:30 to 11:45	66.3	0
11:45 to 12:00	67.2	0
12:00 to 12:15	69	0
12:15 to 12:30	66.4	0
12:30 to 12:45	66.3	0
12:45 to 13:00	66.5	0
13:00 to 13:15	62.2	0
13:15 to 13:30	60.6	0
13:30 to 13:45	63.8	0
13:45 to 14:00	67.3	0
14:00 to 14:15	67.9	0
14:15 to 14:30	69.7	0
14:30 to 14:45	67.6	0
14:45 to 15:00	69.9	0
15:00 to 15:15	66.7	0
15:15 to 15:30	68.6	0
15:30 to 15:45	64.5	0
15:45 to 16:00	60	0
16:00 to 16:15	59.5	0
16:15 to 16:30	61	0
16:30 to 16:45	58.8	0
16:45 to 17:00	58.2	0
17:00 to 17:15	58.3	0
17:15 to 17:30	58.7	0
17:30 to 17:45	58.9	0
17:45 to 18:00	59.3	0
18:00 to 18:15	55.4	0
18:15 to 18:30	57.1	0
18:30 to 18:45	59.3	0
18:45 to 19:00	54.4	0
19:00 to 19:15	56.2	0
19:15 to 19:30	56.3	0
19:30 to 19:45	57.5	0
19:45 to 20:00	58	0
20:00 to 20:15	58.4	0
20:15 to 20:30	58.7	0
20:30 to 20:45	59	0
20:45 to 21:00	59.3	0
21:00 to 21:15	58.9	0
21:15 to 21:30	58.6	0
21:30 to 21:45	58.5	0
21:45 to 22:00	58.8	0
22:00 to 22:15	58.5	0
22:15 to 22:30	59.2	0
22:30 to 22:45	58.4	0
22:45 to 23:00	58.3	0
23:00 to 23:15	57.5	0
23:15 to 23:30	57.5	0
23:30 to 23:45	51.9	0
23:45 to 00:00	56.4	0

# 003 Eastern section – NGARA3

	Sun
	1/03/2020
00:00 to 00:15	0
00:15 to 00:30	0
00:30 to 00:45	0
00:45 to 01:00	0
01:00 to 01:15	0
01:15 to 01:30	0
01:30 to 01:45	0
01:45 to 02:00	0
02:00 to 02:15	0
02:15 to 02:30	0
02:30 to 02:45	0
02:45 to 03:00	0
03:00 to 03:15	0
03:15 to 03:30	0
03:30 to 03:45	0
03:45 to 04:00	0
04:00 to 04:15	0
04:15 to 04:30	0
04:30 to 04:45	0
04:45 to 05:00	0
05:00 to 05:15	0
05:15 to 05:30	0
05:30 to 05:45	0
05:45 to 06:00	0
06:00 to 06:15	0
06:15 to 06:30	0
06:30 to 06:45	0
06:45 to 07:00	0
07:00 to 07:15	0
07:15 to 07:30	0
07:30 to 07:45	0
07:45 to 08:00	0
08:00 to 08:15	0
08:15 to 08:30	0
08:30 to 08:45	0
08:45 to 09:00	0
09:00 to 09:15	0
09:15 to 09:30	0
09:30 to 09:45	0
09:45 to 10:00	0
10:00 to 10:15	0
10:15 to 10:30	0
10:30 to 10:45	0
10:45 to 11:00	0
11:00 to 11:15	0
11:15 to 11:30	0
11:30 to 11:45	0
11:45 to 12:00	0
12:00 to 12:15	0
12:15 to 12:30	0
12:30 to 12:45	0
12:45 to 13:00	0
13:00 to 13:15	0
13:15 to 13:30	0
13:30 to 13:45	0
13:45 to 14:00	0
14:00 to 14:15	0
14:15 to 14:30	0
14:30 to 14:45	0
14:45 to 15:00	0
15:00 to 15:15	0
15:15 to 15:30	0
15:30 to 15:45	0
15:45 to 16:00	0
16:00 to 16:15	0
16:15 to 16:30	0
16:30 to 16:45	0
16:45 to 17:00	0
17:00 to 17:15	0
17:15 to 17:30	0
17:30 to 17:45	0
17:45 to 18:00	0
18:00 to 18:15	0
18:15 to 18:30	0
18:30 to 18:45	0
18:45 to 19:00	0
19:00 to 19:15	0
19:15 to 19:30	0
19:30 to 19:45	0
19:45 to 20:00	0
20:00 to 20:15	0
20:15 to 20:30	0
20:30 to 20:45	0
20:45 to 21:00	0
21:00 to 21:15	0
21:15 to 21:30	0
21:30 to 21:45	0
21:45 to 22:00	0
22:00 to 22:15	0
22:15 to 22:30	0
22:30 to 22:45	0
22:45 to 23:00	0
23:00 to 23:15	0
23:15 to 23:30	0
23:30 to 23:45	0
23:45 to 00:00	0

# 003 Eastern section – NGARA3

	Mon	Tue	Wed	Thu	Fri	Sat	Sun
	2/03/2020	3/03/2020	4/03/2020	5/03/2020	6/03/2020	7/03/2020	8/03/2020
00:00 to 00:15	0	45.3	37.9	36	53.1	54.4	52.8
00:15 to 00:30	0	49.5	35.2	33	49.7	52.5	55
00:30 to 00:45	0	41.7	37.3	36	45.4	49.2	52.5
00:45 to 01:00	0	45	37.9	38.7	43.1	50.1	52.4
01:00 to 01:15	0	45.9	35.7	36.1	46.1	48.6	44
01:15 to 01:30	0	44.6	35.9	31.7	49	47.7	44.9
01:30 to 01:45	0	42.7	35.6	30.7	46.2	49.8	42.7
01:45 to 02:00	0	42.8	35.3	31.3	44.6	51	42.5
02:00 to 02:15	0	41.4	36.1	33.1	46.6	48.3	42.2
02:15 to 02:30	0	41.1	36	33	45.7	43.7	41.6
02:30 to 02:45	0	45.1	35	31.3	48.4	48.7	40.2
02:45 to 03:00	0	40	36.9	35.8	46.8	47.6	42
03:00 to 03:15	0	40.4	32.9	29.4	44.5	49.1	51.5
03:15 to 03:30	0	45.5	35.7	36.2	43	48.4	51.9
03:30 to 03:45	0	40.8	33.7	37.5	43.6	46.9	49.5
03:45 to 04:00	0	44.9	38.3	40.7	46.7	47	50.3
04:00 to 04:15	0	43.1	36.7	44.3	37.4	48.5	40.9
04:15 to 04:30	0	48.6	41.3	44.3	36.1	44.4	38.8
04:30 to 04:45	0	49.7	38.9	46.1	38.7	49.1	41.4
04:45 to 05:00	0	49.7	40.4	45.4	39.9	51.9	38.9
05:00 to 05:15	0	52.1	40.9	45.5	52.6	52.5	43.8
05:15 to 05:30	0	53.2	44.8	45.2	55.4	52.1	48.3
05:30 to 05:45	0	56.8	43.8	45.8	54.8	51.6	52.8
05:45 to 06:00	0	61.7	46.9	44.8	56	52.9	52.4
06:00 to 06:15	0	56.6	46.8	45	56.1	56.8	50.4
06:15 to 06:30	0	63.5	49.1	49.1	59.2	55.4	53
06:30 to 06:45	0	59.5	52.3	49.3	59.5	57	57.1
06:45 to 07:00	0	60	49.1	49.3	59.2	55.7	54.5
07:00 to 07:15	0	58	49	49.9	58.4	57	53.8
07:15 to 07:30	0	60.4	51.9	52.2	59.8	56.7	56
07:30 to 07:45	0	63	51.6	51.2	62.1	59.2	47.9
07:45 to 08:00	0	61.5	53.3	52.2	61.8	59.6	47.2
08:00 to 08:15	0	62.4	54.3	52.2	64	48.7	47.3
08:15 to 08:30	0	62.3	53.1	53.5	63.7	49.1	49.8
08:30 to 08:45	0	63.4	53.7	53.8	64.3	49.9	47.9
08:45 to 09:00	0	60.9	53.2	53.4	62.6	49.5	48.3
09:00 to 09:15	0	61.3	54.3	50.4	62.2	49.3	48.7
09:15 to 09:30	0	61.1	51.2	52.2	63	49.3	49.1
09:30 to 09:45	0	60.9	51.8	52.2	66	52	52.3
09:45 to 10:00	0	60.6	52.8	53.8	64.9	49.9	50.2
10:00 to 10:15	0	58.2	56.9	49.6	63.5	49.9	49.7
10:15 to 10:30	0	63.4	50.7	51.3	61.3	49.1	49.4
10:30 to 10:45	0	59	51.1	51.3	62.4	51.6	50
10:45 to 11:00	0	61.2	51.8	50.3	61.6	51.7	50.2
11:00 to 11:15	0	60.7	51	51.6	50.8	50.3	49.6
11:15 to 11:30	0	61.8	53.1	54.4	51.4	50.1	49.8
11:30 to 11:45	0	62.1	65.1	54.5	51.1	50.4	50.9
11:45 to 12:00	0	62.4	62.4	54	51.1	50.9	49.8
12:00 to 12:15	0	51.9	52.8	52.8	52.1	50.5	58.3
12:15 to 12:30	83	55	53.6	52.1	50.8	54.3	49.9
12:30 to 12:45	67.1	61.4	52.3	53.3	51.8	50.6	51.2
12:45 to 13:00	51.5	61.4	52.5	51.3	51.2	50.8	50
13:00 to 13:15	49.4	51.4	53.3	52	52.3	50.7	49.5
13:15 to 13:30	53.6	51.4	52.3	51.1	51.6	50	50.5
13:30 to 13:45	50.4	50.5	51.3	50	52.2	51.5	52.6
13:45 to 14:00	50.3	51.6	53.4	49.4	50.6	50.9	50.6
14:00 to 14:15	51.5	51.9	54.1	49.2	51.7	50.9	49.9
14:15 to 14:30	52.9	51.1	53.6	54.1	52.8	50.6	49.7
14:30 to 14:45	52.3	51.5	64.7	55.5	51.6	50.8	49.4
14:45 to 15:00	52.5	52.7	62	54.1	53.8	51.5	50.2
15:00 to 15:15	51.9	53.8	62.7	57.3	53.8	49.8	50
15:15 to 15:30	51.5	52.6	63.6	54.1	53	50.7	52.3
15:30 to 15:45	53.1	52.6	62.1	54.9	52.4	58	49.6
15:45 to 16:00	53.7	52.3	62.1	52.4	51.1	51.8	50.1
16:00 to 16:15	64.1	53	52.3	54	51.7	51.7	49.7
16:15 to 16:30	62.7	54.4	51.5	54	51.2	52	49.1
16:30 to 16:45	50.3	52.4	51.8	51.1	50.8	51.3	50.6
16:45 to 17:00	50.8	51.9	51.3	51.5	53.2	51.4	48.4
17:00 to 17:15	61.2	52.5	62.3	51.4	52	53.2	48.6
17:15 to 17:30	61.5	51.8	61.5	51.1	50	50.6	48.5
17:30 to 17:45	60.6	51.6	60.8	50.2	60.6	49.4	51.4
17:45 to 18:00	60.3	50.9	60.3	50.2	66.1	49.6	48.7
18:00 to 18:15	59.3	52.7	59.8	51	54.3	48.8	48.4
18:15 to 18:30	59.6	51.7	59.5	49.2	49.3	48.4	51.8
18:30 to 18:45	61	50.5	59.4	50.4	59.3	49	49.3
18:45 to 19:00	58.5	50	60.5	50.3	60.9	49	48.6
19:00 to 19:15	48.1	62.3	61.2	50.1	61.7	48.5	61
19:15 to 19:30	53.5	63.1	68.8	48.3	59.4	49	60.5
19:30 to 19:45	50.3	67.4	46.5	50.1	48.9	46.5	55.4
19:45 to 20:00	46.2	56.9	47.3	49.2	49.2	48.8	55
20:00 to 20:15	45.2	47.5	45	44.6	48.5	45.6	55.7
20:15 to 20:30	46.3	56.2	44.9	44	48.8	45.1	53.9
20:30 to 20:45	43.2	48.6	55	56.1	57.9	45.1	53.7
20:45 to 21:00	42.7	45.8	55.2	54.6	58.6	43.2	53.4
21:00 to 21:15	51.2	55.1	56.2	44.8	56.5	43.5	53.6
21:15 to 21:30	53.3	54.3	56.5	44.3	57.2	43.4	54.9
21:30 to 21:45	53.9	43.9	42.6	53.1	57.8	54	42.8
21:45 to 22:00	51.7	43.8	42.1	53.1	54.5	54.7	41.2
22:00 to 22:15	50.8	51.2	53.8	57.8	57.5	53.1	43
22:15 to 22:30	47.7	51.8	49.9	55.8	56.2	52.3	44.1
22:30 to 22:45	51.9	49.4	49.8	53.8	55.3	53.8	53.9
22:45 to 23:00	53.5	56.7	47.2	56.2	58.5	57.5	46.6
23:00 to 23:15	45	50.4	40.5	50.4	54.4	55.7	47.7
23:15 to 23:30	54.2	48.3	37.1	49.7	53.3	55.5	48.4
23:30 to 23:45	45.1	38.4	38.4	48.3	54.3	54.9	39
23:45 to 00:00	45.1	41	38.7	48.7	52.6	53.9	40.1

# 003 Eastern section – NGARA3

	Mon	Tue	Wed	Thu	Fri	Sat	Sun
	9/03/2020	10/03/2020	11/03/2020	12/03/2020	13/03/2020	14/03/2020	15/03/2020
00:00 to 00:15	47.3	39.5	48.4	47.6	50.1	51.6	51.6
00:15 to 00:30	46.5	36.2	47.4	39.6	48	52.1	51.2
00:30 to 00:45	49	37.4	49	38.5	47.4	52.4	51.4
00:45 to 01:00	46.4	42	48.5	40.4	46.1	50.4	48.9
01:00 to 01:15	48.5	41.9	47.6	45.6	43.5	52	53.9
01:15 to 01:30	47	36.8	46.3	42.2	45.5	49.7	49.5
01:30 to 01:45	41	35.9	49	39.3	45.7	49	49.6
01:45 to 02:00	43.1	36.1	47.3	39.7	47.4	49.5	48.9
02:00 to 02:15	34.8	36.4	45.8	39.2	43.1	49.3	52.4
02:15 to 02:30	34.2	40.3	40.9	37.5	44.8	47.3	47.9
02:30 to 02:45	46.6	40.4	45.4	47.4	38.1	49.2	38.8
02:45 to 03:00	46.3	40.5	48.5	46.9	36.6	47.9	35.6
03:00 to 03:15	39.3	36.5	42.6	43.8	50.3	48.1	34.4
03:15 to 03:30	45.2	33.5	45.5	42.3	45.8	49	32.3
03:30 to 03:45	46.5	46.1	43.3	46.9	48.3	47.4	33.5
03:45 to 04:00	43.1	48.7	49.4	47	51	48.2	33.7
04:00 to 04:15	48.8	50.3	48.3	46.8	49.9	46.3	37.7
04:15 to 04:30	50.4	48	50	47	48	46.9	35.8
04:30 to 04:45	51	42	50.2	50.1	53.3	49.5	39.7
04:45 to 05:00	52.1	44.6	51.5	49	54.8	49.1	37.9
05:00 to 05:15	52.2	53.7	51	55.4	51.4	51.1	37.7
05:15 to 05:30	52.1	53.1	53.4	55	54.8	50	35.9
05:30 to 05:45	46.2	44.8	43.7	55.7	55.6	52	39.9
05:45 to 06:00	45.8	46	46.5	55.8	56.1	55.3	41.8
06:00 to 06:15	45	51.7	55.4	47	60	53	39.6
06:15 to 06:30	47.7	52.2	56.7	47.1	60.5	53.6	41.2
06:30 to 06:45	59.4	49.8	48.6	51.3	50.9	56.1	43.7
06:45 to 07:00	59.9	49.3	50	51.9	49.3	57.6	46.8
07:00 to 07:15	49.7	48.4	49.6	50.7	59.5	56.7	45.8
07:15 to 07:30	53.3	51.1	49.8	51.8	60.7	57.1	45.6
07:30 to 07:45	54.7	60.3	61.7	62.9	61.2	48	45.1
07:45 to 08:00	54.5	61.4	61.9	63.8	62.5	48	45.5
08:00 to 08:15	54	51.8	52.2	55.8	62.4	47.6	45.3
08:15 to 08:30	52.9	52.4	52.5	56.9	63.4	48.1	45.9
08:30 to 08:45	63.6	52.7	52.8	55	63.2	51.6	48.6
08:45 to 09:00	62.8	51.6	52.8	53.6	62.4	49.5	49.1
09:00 to 09:15	51	61.8	53.7	54.2	51.8	48.3	47.9
09:15 to 09:30	49.7	62.8	52	53.1	50.5	49.2	49.4
09:30 to 09:45	51.2	54.2	51.2	52.2	50.4	48.6	48.6
09:45 to 10:00	50.7	52	51.6	53.7	50.6	50.1	50.4
10:00 to 10:15	63.7	53.8	51.7	53.5	50.2	50.3	50.6
10:15 to 10:30	63.8	55.6	51.5	53.3	51.6	50.3	51
10:30 to 10:45	52.9	53.5	53.9	57.2	52.6	50.2	49.8
10:45 to 11:00	52	53.4	50.2	53.7	50.6	50.7	49.7
11:00 to 11:15	51.5	51.2	51.2	52	50.9	50.7	49.3
11:15 to 11:30	52.2	53.5	49.8	52.8	51.1	50.4	49.9
11:30 to 11:45	51	61.7	50.9	53.6	50.4	50.2	49.3
11:45 to 12:00	51.2	60.3	51.3	55.8	51.5	50.2	49.5
12:00 to 12:15	51.5	51.1	51.4	54.5	50.9	51.4	51.3
12:15 to 12:30	51.7	52.6	51.3	53.5	47.1	50.8	63.8
12:30 to 12:45	53.8	64.8	52.8	51.6	50.5	49.7	53.2
12:45 to 13:00	52.8	62.4	51.7	52	56.5	50.7	50.3
13:00 to 13:15	52.9	52.1	51.6	50.8	50.5	49.7	50.7
13:15 to 13:30	54.4	51.4	51.8	52.9	50.9	49.8	49.6
13:30 to 13:45	54.1	53.5	55.9	52.2	49.8	50.3	50.9
13:45 to 14:00	52.2	50.4	51.5	51	51.3	50.6	52.8
14:00 to 14:15	51.5	58.1	51.2	53.4	50.4	50	50.8
14:15 to 14:30	52.7	61.9	52.3	52.1	51.9	50	49.6
14:30 to 14:45	62.5	60.9	52.7	51.9	52.6	51	49.8
14:45 to 15:00	62.5	61.4	52.2	52.7	52.3	50.1	49.6
15:00 to 15:15	52.4	52.1	52.8	52.6	52.3	50.3	51
15:15 to 15:30	52.4	53.5	53.1	52.9	53.2	49.4	49.7
15:30 to 15:45	52.8	52.4	52.6	53.9	53.3	49	49.1
15:45 to 16:00	53.3	51.6	52.7	55.2	52.2	50	50.7
16:00 to 16:15	54.4	55.1	51.9	54.6	51.3	49.6	51.6
16:15 to 16:30	52.7	52.8	53.9	52.7	51.7	49.3	54.1
16:30 to 16:45	53.4	51.3	52	52.8	50.1	49	51.5
16:45 to 17:00	53.2	51.8	52	53.3	50.2	49.5	51.1
17:00 to 17:15	52.3	61.5	51.3	53.4	49.9	52.2	51.1
17:15 to 17:30	52.4	61.4	51.1	52	50.4	49.1	49.5
17:30 to 17:45	53.8	50.2	54	52	50.5	49.2	51.7
17:45 to 18:00	51.6	51.8	50.2	51.5	49.9	48.5	49.1
18:00 to 18:15	53.9	50.4	50.4	51	49.9	48.8	51.1
18:15 to 18:30	53.8	49.6	50.2	52.8	49.2	47.3	59.2
18:30 to 18:45	51.3	59.9	50.5	61.2	48.9	49.4	54.1
18:45 to 19:00	52	58.9	49.6	61	49.7	49.2	56.8
19:00 to 19:15	49.9	60.1	49.4	48.6	60.1	48.7	51.4
19:15 to 19:30	51	57.3	49.3	48.3	58.7	48.4	48.2
19:30 to 19:45	49.8	57.8	48.3	48.9	57.5	46.5	47.6
19:45 to 20:00	48.8	57.8	48.5	51.2	57.5	48.6	45.9
20:00 to 20:15	47.5	55.2	49.6	50.4	57.2	48.7	46.3
20:15 to 20:30	48.4	57	54	50.3	56.8	47.2	45.9
20:30 to 20:45	60.2	56.6	49.5	51	56.4	47.5	47.4
20:45 to 21:00	57.7	55.8	51.4	50.4	55.7	47.5	49.9
21:00 to 21:15	45.3	54.8	52	59.8	56.3	45.4	46
21:15 to 21:30	43.6	52.5	51.5	59.3	54.7	45.4	47.2
21:30 to 21:45	45.8	56	60.4	59.2	56.2	53.5	49.5
21:45 to 22:00	47.3	53.1	60.3	59.1	56.2	53.1	49.8
22:00 to 22:15	44.9	53.2	48	58.6	55.3	44.9	49.5
22:15 to 22:30	43.8	52.4	47.1	59	55	44.3	48.1
22:30 to 22:45	41.2	52.7	49.1	47.9	53.9	53.6	44.4
22:45 to 23:00	41.2	52.9	47.7	47.4	52.8	53.1	45
23:00 to 23:15	42.2	50.1	56.9	52.9	53.9	53.3	42.9
23:15 to 23:30	43.3	52.4	56.8	52.8	53.2	54.3	44.2
23:30 to 23:45	50.2	48.5	41.4	53.5	51.6	42.4	43.6
23:45 to 00:00	50	49.5	37.1	53.7	51.3	41.8	43.2

# 003 Eastern section – NGARA3

	Mon	Tue	Wed	Thu	Fri	Sat	Sun
	16/03/2020	17/03/2020	18/03/2020	19/03/2020	20/03/2020	21/03/2020	22/03/2020
00:00 to 00:15	44.4	48.5	48.8	51	48.3	51	53
00:15 to 00:30	42.3	47.2	47.4	49.5	48.3	54.2	52
00:30 to 00:45	41.6	50.4	47.7	50.4	46	52.3	52.8
00:45 to 01:00	39.9	47.2	48	50.2	47.1	52.3	50.1
01:00 to 01:15	39.5	47.1	49.5	48.5	45.6	52.7	51
01:15 to 01:30	38.5	45.8	47.2	47.4	45.9	53.8	50.2
01:30 to 01:45	38.7	45.2	37.7	46.8	46.5	51.7	54.2
01:45 to 02:00	37	45.6	37.1	51	47.7	52.7	51
02:00 to 02:15	38.8	47.2	47.3	49.7	45.3	52.3	49.2
02:15 to 02:30	37.9	46.1	46.9	48.3	44.7	48.9	48
02:30 to 02:45	38.7	48	48	46.9	46.4	50.8	52.6
02:45 to 03:00	38.4	46.2	48.4	51.6	44.9	52.5	51.7
03:00 to 03:15	37.4	46.8	38.5	49.2	45.4	51	53.6
03:15 to 03:30	39.5	44.4	38.1	47.5	47.7	51.1	51.3
03:30 to 03:45	38.6	48.8	47.7	47.5	46.2	51.4	49.4
03:45 to 04:00	40.6	50.8	48.8	50.7	47.5	50.6	50.2
04:00 to 04:15	38	51.1	50.4	48.7	49.8	48.3	54.5
04:15 to 04:30	40.2	45	50.8	46.3	45.9	49.2	54.3
04:30 to 04:45	42.4	50.2	50.5	51.5	48.7	50.6	54.8
04:45 to 05:00	43	53	52	49.7	50.4	51.1	55.3
05:00 to 05:15	45.1	51	50.2	53.4	51.4	50.8	54.7
05:15 to 05:30	43.9	60.9	53.8	53.7	52.4	49	55.7
05:30 to 05:45	46.2	45	54.3	55.3	53.6	52.2	54.4
05:45 to 06:00	45.7	46.3	58.5	55.3	55.6	54.1	51
06:00 to 06:15	46.2	45.3	48	55.4	56.5	55.2	48.4
06:15 to 06:30	47.4	47.9	47.1	58.2	57.3	53.7	51.2
06:30 to 06:45	47.8	47.5	49.3	59	58.2	57.8	52.7
06:45 to 07:00	49.3	49.4	49.7	60.6	59.1	57.7	53.9
07:00 to 07:15	48.8	48	52.1	59.6	58	57.9	54.8
07:15 to 07:30	50.9	50.8	50.8	60.6	59.7	57.9	55
07:30 to 07:45	51.4	51.4	51.4	61.4	60.8	58.9	57.7
07:45 to 08:00	52	51.7	51.9	61.7	61.6	57.6	56.6
08:00 to 08:15	54.7	53.1	52.6	62.9	61.7	57.7	57.3
08:15 to 08:30	52.4	52.9	52.5	64	61.9	58.2	57.2
08:30 to 08:45	53.7	55	52.8	66.8	66.1	58.7	56.8
08:45 to 09:00	52.9	52.1	51.8	70.5	61.4	58.4	58.3
09:00 to 09:15	53.1	49.7	51.2	61.6	61.2	59	59.2
09:15 to 09:30	51.6	48.8	52.8	70.8	60.2	59.7	59.7
09:30 to 09:45	50	50.8	50.4	74.9	62.8	58.9	60.2
09:45 to 10:00	53.2	51.7	50.7	60.9	62.6	58.7	60.4
10:00 to 10:15	50.4	51	52.9	59.6	60.7	60.3	58
10:15 to 10:30	52.8	50.6	55.8	60.1	61.9	60.1	58.5
10:30 to 10:45	50.6	50.9	50.2	61.6	50.6	60.1	59
10:45 to 11:00	50.9	51.1	49.7	60.8	52.8	60.3	60.1
11:00 to 11:15	48.9	52.9	50.4	67.7	50.4	60.3	58.9
11:15 to 11:30	50.3	53.7	52.4	60.5	52.7	59.1	58.1
11:30 to 11:45	53.9	51.2	50	60.5	51	59.5	59.2
11:45 to 12:00	50.3	51.2	50.6	58.9	54.5	58.9	59.3
12:00 to 12:15	51.1	52.3	51.1	51.5	52.2	58.7	58.7
12:15 to 12:30	63.8	52.6	50.3	50.3	53	59.8	58.7
12:30 to 12:45	61.6	52.3	51.4	49.9	55.6	51.1	58.8
12:45 to 13:00	55.3	58.4	50.7	49.2	57.6	49.4	60
13:00 to 13:15	51.9	59.4	50.3	51.1	51.5	49.2	50.2
13:15 to 13:30	51.6	56.8	50.4	48.9	58	49.8	49.5
13:30 to 13:45	52.1	54.1	50	49	60.3	50.3	48.5
13:45 to 14:00	49.7	67.7	51.3	48.9	64.8	50.2	53.1
14:00 to 14:15	52	51.5	60.3	49.7	71.5	50.3	49.2
14:15 to 14:30	53	53.1	51	51	74.5	49.9	49.6
14:30 to 14:45	53.5	53	51.7	61.7	76.6	51	57.6
14:45 to 15:00	53.4	52.9	52.1	60.5	68.8	48.6	57.9
15:00 to 15:15	52.7	53.1	52.4	61.6	53.9	49.5	58.5
15:15 to 15:30	52.9	54.4	53.1	61.8	58.5	49.6	59.4
15:30 to 15:45	54.4	59.6	52.4	62	53.9	49.6	58.2
15:45 to 16:00	53.2	53.6	53.8	62.1	53.4	50.3	57.3
16:00 to 16:15	54.1	53.1	51.1	62.9	59.4	49.7	59.5
16:15 to 16:30	50.8	52.6	52.3	60.7	59.3	51.2	56.7
16:30 to 16:45	53.1	50.9	51.2	60.8	49.9	48.7	66
16:45 to 17:00	54.5	53	51.4	60.5	50.8	49.6	58.1
17:00 to 17:15	51.8	54.1	51.3	60.2	49.9	49.2	58.1
17:15 to 17:30	51.7	51.5	50.8	60.7	49.8	48.2	57.4
17:30 to 17:45	52.6	49.9	49.4	59.2	51.3	48.1	55.8
17:45 to 18:00	52.2	52.5	49.7	59.1	50	48.3	56.2
18:00 to 18:15	54.1	49.9	61.2	59	47.7	48.3	58.7
18:15 to 18:30	50.5	50.9	58.7	58.8	48.8	55.9	57.7
18:30 to 18:45	53.2	49	59.4	58.1	49.7	48.3	48.5
18:45 to 19:00	50.1	49.3	59.7	74.5	50.3	46.8	48.3
19:00 to 19:15	48.6	58.5	60.4	60.8	48.2	57	60
19:15 to 19:30	47.3	60.5	59	57.2	44.8	57.3	45.5
19:30 to 19:45	48.4	53.5	61.6	58.4	50.1	56.9	55.5
19:45 to 20:00	49.6	49.9	59.6	57	46.3	56.5	55
20:00 to 20:15	45.7	47.7	59.9	56.9	45.8	56.4	44.4
20:15 to 20:30	49.8	46.1	60.2	55.2	47.6	56.8	46.4
20:30 to 20:45	47.5	44.9	60.2	57.3	55.9	56.9	52.8
20:45 to 21:00	44	45.3	59.4	58.1	56.3	56.5	56.9
21:00 to 21:15	55.9	45.1	59.6	54.7	53.9	56.3	53.5
21:15 to 21:30	55	44.8	56.8	54.2	59.2	55.7	56.5
21:30 to 21:45	43.3	43.9	58.3	54	56.5	54.8	54.2
21:45 to 22:00	45.3	42.3	57.3	53.8	51.9	55	54.1
22:00 to 22:15	43.9	42.3	56.5	52.5	55.7	53.4	53.2
22:15 to 22:30	40.9	41.9	55.1	53.9	54	54.9	51.9
22:30 to 22:45	43	52.4	55	51.9	53.1	50.7	53.7
22:45 to 23:00	41.3	54.3	54.8	52.2	54	52.6	52.3
23:00 to 23:15	53.9	43.1	52.7	51.4	52.6	52.9	50.6
23:15 to 23:30	48.6	41.6	51.1	54.8	61.8	51.7	50.8
23:30 to 23:45	49.4	41.2	51.1	51.4	54.6	49.9	49.2
23:45 to 00:00	48.8	41.2	51.8	51.6	51.4	48.6	49.7

# 003 Eastern section – NGARA3

	Mon	Tue	Wed	Thu	Fri	Sat	Sun
	23/03/2020	24/03/2020	25/03/2020	26/03/2020	27/03/2020	28/03/2020	29/03/2020
00:00 to 00:15	51.4	53.7	45.8	48.9	48.8	53.1	46.7
00:15 to 00:30	48.5	53.3	46.8	49.6	46.9	45.9	42.3
00:30 to 00:45	49.3	50.5	48.2	47.3	44.9	46.6	41.6
00:45 to 01:00	46.6	51.5	49.1	44.9	39.7	44.8	44.3
01:00 to 01:15	45.1	52.9	48.9	48.5	39	45.1	36.6
01:15 to 01:30	43.1	51.5	49.2	47.7	36	49.7	34.1
01:30 to 01:45	46.2	50.3	46.3	42.4	46.6	50.1	42.3
01:45 to 02:00	43.5	50.1	46.4	43.7	47	48.4	41.7
02:00 to 02:15	46.9	41.3	48.2	45.9	44.9	37	42.7
02:15 to 02:30	47.1	46.5	40.8	45.4	46	35.5	46.6
02:30 to 02:45	50.1	47.8	43.3	46.9	43.9	36.6	49
02:45 to 03:00	50.8	43.2	43.4	47.3	43.8	33.7	43.5
03:00 to 03:15	54.6	40.2	37	43.8	44.3	37.8	44.8
03:15 to 03:30	49.2	40	39.4	43.7	41.7	37.8	44.2
03:30 to 03:45	47.9	50.5	50.6	45.6	45.6	36	45.7
03:45 to 04:00	46.8	51.4	49.6	48.1	45.4	36.2	47.7
04:00 to 04:15	47	52.5	49.3	45.9	44.5	37.8	47.1
04:15 to 04:30	51.1	52.5	48.5	45.2	44.1	35.5	44.2
04:30 to 04:45	51.1	44.5	51	49.4	35.8	49	51.4
04:45 to 05:00	51.5	42.2	52.3	44.3	39.7	48.3	48.9
05:00 to 05:15	53.1	53.4	51.2	50.8	49.9	48.5	49.7
05:15 to 05:30	53.9	55.3	51.4	52.8	52	48.6	47.3
05:30 to 05:45	53.4	56.4	53.9	51.7	54.3	52.1	50.8
05:45 to 06:00	56.7	55.9	54.8	54.6	55.1	51.4	52.4
06:00 to 06:15	56.4	47.4	54.8	56.4	56.2	40.6	48.3
06:15 to 06:30	56	50.1	56.9	57.1	55.6	42.9	52
06:30 to 06:45	58	59.5	47.4	56.6	57.5	45.6	54.1
06:45 to 07:00	58.9	60.1	48.5	59.4	58.5	45.5	53.3
07:00 to 07:15	58.3	59.7	48.5	60.8	58.3	55.3	53.2
07:15 to 07:30	59	60.8	49.3	58.5	59.1	57	53.7
07:30 to 07:45	60.4	61	62.8	61.2	60.1	57	56.9
07:45 to 08:00	69.4	61.3	62.1	62.1	62.8	58.8	54
08:00 to 08:15	55.3	61.7	62.9	62.7	63.7	61.1	56.1
08:15 to 08:30	57.1	61.6	61.3	65.7	63.7	60.3	55.1
08:30 to 08:45	57.5	61.5	62.3	62.8	63.2	59.3	57
08:45 to 09:00	57.6	60.6	63.1	68.5	61.7	58.3	57.4
09:00 to 09:15	59.3	74.1	64.3	61.5	51.5	59.6	58
09:15 to 09:30	63	68	63.7	59.8	53.9	57.7	56.1
09:30 to 09:45	58.5	60.6	64.4	62.7	62.6	58.1	64.1
09:45 to 10:00	57.1	59.8	69.4	60.5	64.8	59.6	58.3
10:00 to 10:15	65	60.6	51.4	62.1	50.7	60	59.1
10:15 to 10:30	62.7	59.7	49.8	60.3	50.5	58.5	57.8
10:30 to 10:45	50.1	61.7	61.3	63.6	53.5	60.1	59.8
10:45 to 11:00	50.6	61.1	60	61.9	52.9	59.1	58.1
11:00 to 11:15	56.4	62.2	59.9	59.9	57.2	48.4	49
11:15 to 11:30	59.1	59.9	62	62.1	53.1	48.8	47.9
11:30 to 11:45	54.5	59.5	59.7	59.8	61.1	49.6	57.5
11:45 to 12:00	52.5	69.6	61.3	65.8	62.6	48.9	59
12:00 to 12:15	51.2	60.7	62.6	49.8	52.4	49.3	60.2
12:15 to 12:30	50.2	60.2	59.2	51.6	50.5	48.8	57.8
12:30 to 12:45	51.5	50.6	62.3	51.4	52.4	50.7	57.3
12:45 to 13:00	60.4	51.4	59.8	54.4	54	51.6	57.9
13:00 to 13:15	57.6	59.6	60.3	52.6	55	61.8	47.3
13:15 to 13:30	54	60	59.8	50	52.2	59.2	47.8
13:30 to 13:45	51.5	59.7	60.8	50.8	51.2	69.2	48.5
13:45 to 14:00	49.9	59.5	62.4	50.3	53.3	62.6	47.6
14:00 to 14:15	51.3	61.6	59.7	53.8	53	58	46.2
14:15 to 14:30	51.6	61.6	60.5	50.8	53.5	57.9	49.6
14:30 to 14:45	51.8	60.9	63.1	54.1	62.2	58.9	48.5
14:45 to 15:00	51.3	60.3	61	51.5	61.3	58.8	56.9
15:00 to 15:15	51.8	51.3	61.1	52.9	51.5	58.2	47.2
15:15 to 15:30	52.4	52.3	62.1	52.9	52.9	58.8	46.9
15:30 to 15:45	52.9	51.6	63.6	52.8	52.1	48.3	63.7
15:45 to 16:00	51	51.2	61.2	52.9	50.6	48.6	58.5
16:00 to 16:15	51.8	61	60	57.1	52	48.5	58.7
16:15 to 16:30	50.6	60.2	60.3	50.9	50.8	47.5	56.9
16:30 to 16:45	53.9	59.2	60	61.5	50	50.3	58.9
16:45 to 17:00	52.1	59.7	60.1	59.9	50.3	46.7	56.9
17:00 to 17:15	49.7	59.9	61.9	59.2	49.5	57.6	55.4
17:15 to 17:30	50.3	59.5	59.6	57.8	50.3	56.4	56.4
17:30 to 17:45	49.8	58.7	58.5	59	58.9	56.3	59
17:45 to 18:00	50	59	58.6	59.8	59.8	56.5	55.5
18:00 to 18:15	49.6	58.5	59.9	56.6	58.9	58	55.9
18:15 to 18:30	49.3	59.1	60	57.4	76.1	56.5	57.7
18:30 to 18:45	48.5	62.4	57	59.9	57.2	54.9	64.7
18:45 to 19:00	48.6	59.6	59.4	59.8	59.7	56.7	54.4
19:00 to 19:15	44.6	57.1	59.4	59.6	56.5	54.4	53.7
19:15 to 19:30	47	55.4	55.3	56.8	57.5	57.3	55.1
19:30 to 19:45	56	55.1	55.5	55.6	53.9	55.3	55.7
19:45 to 20:00	54.3	56.5	61.2	56.3	54.6	55.1	54.6
20:00 to 20:15	52.3	54.2	56.1	44.7	53.4	44.7	58.6
20:15 to 20:30	53.5	51	53.7	47.3	54.7	46.4	54.8
20:30 to 20:45	60.1	58	54.3	43.3	52.3	53.9	53.6
20:45 to 21:00	62.8	55.8	54.6	40.9	53.2	51	51.6
21:00 to 21:15	53.1	50.2	55.2	41	43.3	52.9	51.6
21:15 to 21:30	52.2	52.2	56.7	39.3	42.2	55.8	51.8
21:30 to 21:45	47.1	49.4	54	44.3	43.6	52.2	49.2
21:45 to 22:00	57.6	53.7	52.4	46	46.2	53	49.5
22:00 to 22:15	47.3	50.5	51.3	48.9	43.9	52	48.3
22:15 to 22:30	48.9	51.7	53	53	37.3	50.9	47.9
22:30 to 22:45	47.3	51.1	50	53	39.2	51	48.3
22:45 to 23:00	53.3	47.4	50.9	56.8	39.9	48.2	48.3
23:00 to 23:15	53.2	43	49.3	49.9	39.5	47.8	44.9
23:15 to 23:30	51.3	41.7	50.4	52.3	41.7	48	44.5
23:30 to 23:45	51.5	46.2	45.7	42	36.4	48	49.6
23:45 to 00:00	53.4	41.9	47.7	44.9	41.3	48	42.1

# 003 Eastern section – NGARA3

	Mon	Tue
	30/03/2020	31/03/2020
00:00 to 00:15	44.8	46.1
00:15 to 00:30	43.2	43.3
00:30 to 00:45	44.4	44.4
00:45 to 01:00	39.5	45.1
01:00 to 01:15	43.8	44.5
01:15 to 01:30	45.1	43.1
01:30 to 01:45	52.5	46.8
01:45 to 02:00	45.2	48.6
02:00 to 02:15	43.9	40.4
02:15 to 02:30	42.6	41.2
02:30 to 02:45	44.2	44.7
02:45 to 03:00	40.2	40.5
03:00 to 03:15	39.3	41.6
03:15 to 03:30	41.5	41
03:30 to 03:45	45.9	44
03:45 to 04:00	45.5	45.6
04:00 to 04:15	50.7	45
04:15 to 04:30	42.7	50
04:30 to 04:45	48.2	49.2
04:45 to 05:00	48.6	49.2
05:00 to 05:15	50.7	51.3
05:15 to 05:30	55.1	60.4
05:30 to 05:45	54.3	54.2
05:45 to 06:00	54.6	52.8
06:00 to 06:15	55.2	53.9
06:15 to 06:30	57	57.6
06:30 to 06:45	59	58.5
06:45 to 07:00	58.4	58.3
07:00 to 07:15	57.2	58.7
07:15 to 07:30	58.6	62.3
07:30 to 07:45	62.5	63.5
07:45 to 08:00	61.3	61.6
08:00 to 08:15	60.8	61.2
08:15 to 08:30	60.6	61.7
08:30 to 08:45	60.4	61.5
08:45 to 09:00	60.9	62.3
09:00 to 09:15	59.8	58.9
09:15 to 09:30	60.7	60.6
09:30 to 09:45	60.4	63
09:45 to 10:00	60.3	60.5
10:00 to 10:15	59	63.4
10:15 to 10:30	59.3	61.2
10:30 to 10:45	59.6	57.8
10:45 to 11:00	58	58
11:00 to 11:15	60.1	60.3
11:15 to 11:30	60.1	61.6
11:30 to 11:45	61.7	59.7
11:45 to 12:00	65.5	59.4
12:00 to 12:15	59.5	57.7
12:15 to 12:30	61	60.4
12:30 to 12:45	59.6	58.1
12:45 to 13:00	60.8	89.1
13:00 to 13:15	61.4	62.3
13:15 to 13:30	59.8	59.6
13:30 to 13:45	60	58.7
13:45 to 14:00	59.2	58.8
14:00 to 14:15	60	63.3
14:15 to 14:30	60	58.2
14:30 to 14:45	59.8	58.7
14:45 to 15:00	60.1	60.5
15:00 to 15:15	59.7	61.9
15:15 to 15:30	61.7	59.9
15:30 to 15:45	60.2	59.6
15:45 to 16:00	63.5	58.7
16:00 to 16:15	63.1	61.1
16:15 to 16:30	59.8	56.4
16:30 to 16:45	64.1	57.4
16:45 to 17:00	59.7	57.9
17:00 to 17:15	59.3	58.6
17:15 to 17:30	62.9	59.2
17:30 to 17:45	57.4	59.7
17:45 to 18:00	58.1	59
18:00 to 18:15	57.3	57.3
18:15 to 18:30	58.9	58.1
18:30 to 18:45	56.7	58.6
18:45 to 19:00	57.5	55.5
19:00 to 19:15	54	56.3
19:15 to 19:30	54	53.8
19:30 to 19:45	56.6	56
19:45 to 20:00	57.4	53.8
20:00 to 20:15	55.1	55.2
20:15 to 20:30	53.4	50.9
20:30 to 20:45	52.4	52.4
20:45 to 21:00	53.1	56.9
21:00 to 21:15	52.3	49.6
21:15 to 21:30	51	54.6
21:30 to 21:45	50	52
21:45 to 22:00	54.8	49.1
22:00 to 22:15	46.4	48.5
22:15 to 22:30	48.4	48.7
22:30 to 22:45	50.2	47
22:45 to 23:00	51.6	48.4
23:00 to 23:15	50.5	48.1
23:15 to 23:30	49.9	52.7
23:30 to 23:45	45.8	0
23:45 to 00:00	46	0