

Environmental Noise Assessment Report (June 2020)

Tweed Valley Hospital Project, Kingscliff NSW

Prepared for: Delta Group





ADE
CONSULTING
GROUP

Prepared for:

Delta Group

Environmental Noise Assessment Report

Tweed Valley Hospital Project, Kingscliff NSW

Version	Details	Date
v1f	Written by [REDACTED]	10 th July 2020

Report No: DLT-01-Q1013 / NMA11 / v1f

Date: 10th July 2020

Written By:

[REDACTED]
B. Env. Sci.
Occupational Hygienist

Reviewed By:

[REDACTED]
Principal Occupational Hygienist
B. Industrial Engineering
M. (Ind. Hygiene)

This report is copyright. No part of this publication may be reproduced or transmitted in any form or by any means, electronic or mechanical, including photocopying without permission in writing from ADE

Consulting Group Pty Ltd.



ENVIRONMENTAL NOISE ASSESSMENT REPORT
ADE Report No. DLT-01-Q1013 / NMA11 / v1f

EXECUTIVE SUMMARY

Environmental noise monitoring was conducted at Tweed Valley Hospital Project, Kingscliff NSW commencing on 26th July 2019 as per Delta Group requirements. This report will ensure environmental noise produced by the construction works on site comply with:

- Lendlease Building Pty Ltd Tweed Valley Hospital – Management Plan – Noise and Vibration dated 10 December 2019 Revision 7.0;
- *NSW Work health and Safety regulation (2017), clause 56 exposure standard for noise* for the duration of the project;
- Conditions C5 – C8 of Schedule 3 of the consent; and
- EPA's Interim Construction Guidelines.

Summary of Exceedances for June 2020

No exceedances occurred throughout the month of June 2020.

Background Environmental Noise Level

Background Environmental noise monitoring commenced on 26th July 2019 in three (3) separate locations. These locations are along the south eastern boundary of the site, near Cudgen Road (refer to *Appendix I – Aerial Photograph of monitoring locations*). These monitoring locations were chosen to determine if noise being generated from the construction site complies with the levels stated in the above-mentioned guidelines. It has been determined that if the environmental noise levels at the boundary comply with the relevant guideline values, then the noise levels at the neighbouring properties would not be of great concern.

The time construction noise can be generated is regulated by the inclusion of standard construction hours that are regulated by Conditions C5 – C8 of Schedule 3 of the consent. According to condition C5, the recommended standard hours for construction work are:

Normal Construction – Monday to Friday 7am to 6pm,
Saturday 8am to 1pm
No work on Sundays or public holidays

The background noise level has been assessed for the project and the EPA's Interim Guidelines mention that the Management level of noise LAeq, 15 min should not be greater than 10 decibels above the background noise level during the normal construction times and no greater than 5 decibels outside of the normal construction times.

The background noise levels and results for monitoring conducted from 27th July 2019 to 31st July 2019 are listed in Table 1 on the following page.

Sydney Office:

ADE Consulting Group Pty Ltd
Unit 6 / 7 Millennium Court
Silverwater, NSW 2128

Melbourne Office:

ADE Consulting Group Pty Ltd
Unit 4 / 95 Salmon Street
Port Melbourne, VIC 3207

Newcastle Office:

ADE Consulting Group Pty Ltd
Unit 9 / 103 Glenwood Drive
Thornton, NSW 2322

Brisbane Office:

ADE Consulting Group Pty Ltd
Unit 3 / 22 Palmer Place
Murarrie QLD 4172

Contact Us:

Site: www.ADE.Group
Email: info@ade.group
Phone: 1300 976 922

Table 1. Background Noise Levels.

BACKGROUND NOISE LEVELS dB(A)				
		Monitoring Location		
		001 Adjacent to carpark	002 Central location	003 Eastern section
Day:	7am to 6pm	73	73	69
Evening:	6pm to 10pm	63	62	60
Night:	10pm to 7am	57	56	55

*ND = No Data

TABLE OF CONTENTS

EXECUTIVE SUMMARY	3
TABLE OF CONTENTS	5
DEFINITIONS	6
1 INTRODUCTION	8
1.1 Project Background.....	8
1.2 Monitoring Locations.....	9
1.3 Monitoring Frequency	9
1.4 Noise Management Levels.....	9
1.5 Survey Instrumentation and Methodology	12
1.6 Existing Noise Environment	12
1.7 Meteorological Conditions	13
1.8 Out of Hours Work.....	13
2 RESULTS	13
3 DISCUSSION.....	15
4 CONCLUSION	16
APPENDIX I.....	17
AERIAL PHOTOGRAPH OF MONITORING LOCATIONS	17
APPENDIX II.....	19
MONITORING LOCATIONS.....	19
APPENDIX III.....	23
RAIN AND WINDY CONDITIONS.....	23
APPENDIX IV	24
ADE SITE TIME SUMMARY.....	24
APPENDIX V	26
A-WEIGHTED EQUIVALENT CONTINUOUS NOISE LEVEL OVER A 15-MINUTE PERIOD FOR EACH MONITORING LOCATION.....	26

DEFINITIONS

- Airborne noise management levels** – to be measured and assessed at the residential property boundary that is most exposed to construction noise, and at a height of 1.5 m above ground level. If the residential property boundary is more than 30 m from the residence, the location for measuring or predicting noise levels is at the most affected point within 30 m of the residence.
- Assessment location** – an identified residence or other sensitive land use.
- A-weighting** – an adjustment made to the sound level measurement to approximate the response of the human ear.
- Background noise level** – the underlying level of noise present in the ambient noise when extraneous noise is removed and excluding noise from the construction project under consideration. This is described using the L_{A90} descriptor.
- Construction works** – include the erection, installation, alteration, repair, maintenance, cleaning, painting, renewal, removal, excavation, dismantling or demolition of, or addition to, any building or structure, or any work in connection with any of these activities, that is done at or adjacent to the place where the building or structure is located. Construction works occur on a site for a limited period of time only.
- Decibel (dB)** – a measure of sound equivalent to 20 times the logarithm (to base 10) of the ratio of a given sound pressure to a reference pressure, and 10 times the logarithm (to base 10) of the ratio of a given sound power to a reference power.
- dB(A)** – a measure of A-weighted sound levels.
- Emergency works** – unforeseen works immediately needed to prevent the loss of life, damage to property or environmental harm.
- Environmental impact assessment** – a broad term that covers the range of assessments required under the *Environmental Planning and Assessment Act 1979* and any related amendments to the Act.
- Extraneous noise** – noise resulting from activities that are not typical of the area. Atypical activities include traffic generated by holiday periods and special events such as concerts or sporting events. Normal daily traffic is not considered to be extraneous.
- Ground-borne noise** – noise heard within a building that is generated by vibration transmitted through the ground into the structure from construction works, sometimes referred to as ‘regenerated noise’ or ‘structure-borne noise’. Ground-borne noise can be more noticeable than airborne noise for underground works such as tunnelling. The ground-borne noise levels are only applicable when ground-borne noise levels are higher than airborne noise levels.
- Habitable room** – any room other than a garage, storage area, bathroom, laundry, toilet or pantry.
- Internal noise level** – applies at the centre of the room in use that is most exposed to the construction noise and can include both airborne and ground-borne noise.
- L_{A90} (15 min)** – the A-weighted sound pressure level that is exceeded for 90% of the 15-minute measurement period, when measured in the absence of the construction works

under consideration and excluding extraneous noise. This is considered to represent the background noise.

L_{Aeq} (15 min) –

the A-weighted equivalent continuous (energy average) A-weighted sound pressure level of the construction works under consideration over a 15-minute period and excludes other noise sources such as from industry, road, rail and the community. Other descriptors may be used providing they can be justified as representing the characteristics of the construction noise.

Most affected location(s) – location(s) that experience (or will likely experience) the greatest noise impact from the construction works under consideration. In determining these locations, existing background noise levels, noise source location(s), distance and any shielding between the construction works (or proposed works) and the residences and other sensitive land uses need to be considered.

Rating background level – the overall single-figure background noise level for each assessment period. Determination of the rating background level is by the method described in the *NSW Industrial Noise Policy* (EPA 2000). This approach aims to result in the noise management level being met for at least 90% of the time periods (15 minutes each) over which reactions of annoyance can occur.

1 INTRODUCTION

1.1 Project Background

Delta Group are undertaking Earthworks for the Tweed Valley Hospital Project located at 771 Cudgen Road, Kingscliff NSW, hereafter referred to as 'The Site'. Excavation works were ongoing during June 2020.

The purpose of this Noise Monitoring Assessment (NMA) report is to assess the impacts construction activities from the Tweed Valley Hospital Project have had on noise levels on site and ensure compliance with the Tweed Valley Hospital Management Plan – Noise and Vibration and conditions C5 – C8 and C19 from Schedule 3 of the consent below as well as the Criteria listed in Section 1.4.

C5	Construction, including the delivery of materials to and from the site, may only be carried out between the following hours: a) between 7am and 6pm, Mondays to Fridays; and b) between 8am and 1pm, Saturdays. No work may be carried out on Sundays or public holidays
C6	Activities may be undertaken outside of the hours in condition C5 of the Schedule 3, if required: a) by the Police or a public authority for the delivery of vehicles, plant or materials: or b) in an emergency to avoid the loss of life, damage to property or to prevent environmental harm: or c) where the works are inaudible at the nearest sensitive receivers; or d) where a variation is approved in advance in writing by the Planning Secretary or his nominee if appropriate justification is provided for the works.
C7	Notification of such activities must be given to affected residents before undertaking the activities or as soon as is practical afterwards.
C8	The construction hours must include respite periods and specific times for activities during the day (outside the sensitive times), as required by condition B28(g) of Schedule 3 of this consent, for the high noise generating construction activities (such as activities that would reach or exceed the Highly Affected Level as defined in the ICNG).
C19	Unattended long-term construction noise monitoring must be undertaken during the Stage 1 works. The location of the unattended logger must be in accordance with the approved CNVMP required by condition B28 of Schedule 3. These loggers must be maintained and checked by a suitably qualified acoustician. The logger must automatically send a message to the suitably qualified acoustician once noise levels from construction works on the Site exceed 75dBA LAeq(15min) at the residential and non-residential receivers in Catchments A / B, Kingscliff TAFE and Kingscliff High School, to ensure that the mitigation measures specific to this exceedance are implemented on the Site at that time. The results of this monitoring must be provided to the Department for information on a monthly basis after the commencement of the Stage 1 construction works.

1.2 Monitoring Locations

The Site is located 771 Cudgen Road, bounded Tweed Coast Road to the West, Turncock Street to the East and Cudgen Road adjacent to the South at Kingscliff, NSW (refer to **Appendix 1 – Aerial Photograph of monitoring locations**).

Delta Group requested to ADE to set up three Sound Level Meters (SLM) within the site to assess the levels of noise prior to the sound leaving the site.

Airborne noise levels are recorded at these locations to determine the noise levels where the nearest receptors are. This reporting period, monitoring to determine the Background Noise Levels commenced on 26th July 2019 and continued until 31st July 2019 before the works started. These background noise levels were determined for the various time periods during the 24-hour day (refer to **Table 2** below).

Table 2. Background Noise Levels.

BACKGROUND NOISE LEVELS dB(A)				
		Monitoring Location		
		001 Adjacent to carpark	002 Central location	003 Eastern section
Day:	7am to 6pm	73	73	69
Evening:	6pm to 10pm	63	62	60
Night:	10pm to 7am	57	56	55

Construction and site work noise level recording commenced on 1st August 2019 and will continue for the duration of the project.

1.3 Monitoring Frequency

Monitoring is to be carried out for the duration of the DLT project in these locations as per the client request according to the Interim Construction Guideline NSW EPA 2009. Realtime data from the continuous monitoring of the levels of noise is uploaded to cloud storage which is accessed by ADE consultants to monitor the levels of noise. Noise levels downloaded from the cloud will be averaged every 15 minutes ($L_{Aeq(15\ min)}$) and compared with the Management Levels.

1.4 Noise Management Levels

Noise management levels depend on the noise receivers, the time and the day. For residences the levels are established depending on the day, the time and the Rating Background Level (RBL) being:

TIME OF THE DAY	MANAGEMENT LEVEL $L_{Aeq(15\ min)}$
RECOMMENDED STANDARD HOURS Monday to Friday 7 am to 6 pm Saturday 8 am to 1 pm No work on Sundays or public holidays	Noise affected RBL + 10 dB Highly noise affected 75 dB(A)
OUTSIDE RECOMMENDED STANDARD HOURS	Noise affected RBL + 5 dB

For the other closest noise receivers, the management level, $L_{Aeq(15min)}$, will depend on the type of receivers other than residents and only apply when centers are in operation, these management levels are:

LAND USE	MANAGEMENT LEVEL $L_{Aeq(15 min)}$
Active recreation Areas - Sport Activities	65 dB(A) External noise level
Industrial premises (External)	70 dB(A) External noise level

The Sound Level Meters for the project are set up within the construction site, so results from them cannot be directly compared with the Management Levels identified above because they are not measuring the level of noise received by the receptor.

ADE has calculated for each receptor the Management Levels based on:

- The distance in between the receptor and the location of the Sound Level Meter.
- The distance in between the Sound Level Meter and the location of the works performed.
- Knowing that there is a reduction of approximately 6dB(A) for each doubling of distance.

All calculated Management Levels are identified in Table 3 on the following page.

Sydney Office:

ADE Consulting Group Pty Ltd
Unit 6 / 7 Millennium Court
Silverwater, NSW 2128

Melbourne Office:

ADE Consulting Group Pty Ltd
Unit 4 / 95 Salmon Street
Port Melbourne, VIC 3207

Newcastle Office:

ADE Consulting Group Pty Ltd
Unit 9 / 103 Glenwood Drive
Thornton, NSW 2322

Brisbane Office:

ADE Consulting Group Pty Ltd
Unit 3 / 22 Palmer Place
Murarrie QLD 4172

Contact Us:

Site: www.ADE.Group
Email: info@ade.group
Phone: 1300 976 922

Table 3. Calculated Noise Management Levels.

LOCATION	RECEPTOR	MANAGEMENT LEVELS FOR THE NEAREST RECEPTORS BASED ON THE DISTANCE IN BETWEEN THE LOCATION OF THE WORKS AND THE SOUND LEVEL METER [dB(A)]			
		>86 meters from SLM	86-43 meters from SLM	43-14 meters from SLM	14-6 meters from SLM
001 Adjacent to carpark – NGARA2	Hardy Electrical& Solar (Industrial) 43 meters from the SLM	Day: 75	Day: 81	Day: 87	Day: 93
		>72 meters from SLM	72-36 meters from SLM	36-12 meters from SLM	12-5 meters from SLM
	Day: 73	Day: 79	Day: 85	Day: 91	
	Evening: 63	Evening: 69	Evening: 75	Evening: 81	
	Night: 57	Night: 63	Night: 69	Night: 75	
002 Central location – NGARA1	806 Cudgen Rd, Kingscliff (Residential) 56 meters from the SLM	Highly Noisy: 75	Highly Noisy: 81	Highly Noisy: 87	Highly Noisy: 93
		>112 meters from SLM	112-56 meters from SLM	56-18 meters from SLM	18-8 meters from SLM
		Day: 73	Day: 79	Day: 85	Day: 91
		Evening: 62	Evening: 68	Evening: 74	Evening: 80
		Night: 56	Night: 62	Night: 68	Night: 74
003 Eastern section – NGARA3	64 Cudgen Rd, Kingscliff (Residential) 50 meters from SLM	Highly Noisy: 75	Highly Noisy: 81	Highly Noisy: 87	Highly Noisy: 93
		>94 meters from SLM	94-47 meters from SLM	47-15 meters from SLM	15-7 meters from SLM
		Day: 69	Day: 75	Day: 81	Day: 87
		Evening: 60	Evening: 66	Evening: 72	Evening: 78
		Night: 55	Night: 61	Night: 67	Night: 73
	Tweed Regional Aquatic Centre – Kingscliff (Active recreation area) 105 meters from SLM	>166 meters from SLM	166-83 meters from SLM	83-27 meters from SLM	27-12 meters from SLM
		65 dB(A)	71 dB(A)	77 dB(A)	83 dB(A)

Note: Highlighted in yellow are the more restrictive levels.

Sydney Office:

ADE Consulting Group Pty Ltd
Unit 6 / 7 Millennium Court
Silverwater, NSW 2128

Melbourne Office:

ADE Consulting Group Pty Ltd
Unit 4 / 95 Salmon Street
Port Melbourne, VIC 3207

Newcastle Office:

ADE Consulting Group Pty Ltd
Unit 9 / 103 Glenwood Drive
Thornton, NSW 2322

Brisbane Office:

ADE Consulting Group Pty Ltd
Unit 3 / 22 Palmer Place
Murarrie QLD 4172

Contact Us:

Site: www.ADE.Group
Email:
info@ade.group
Phone: 1300 976 922

1.5 Survey Instrumentation and Methodology

At all locations, the Sound Level Meter (SLM) was enclosed in a tough case which remained at ground level with an extension pole attached to the case with the microphone mounted on top of the pole. The height of the microphone was approximately 1.5 metres above the ground level.

A wind shield was placed on each microphone to reduce any wind interference during the measurements. The sound meter's microphone is orientated toward the noise sources for all measurements and the area in between the sound level and the noise source was free from any temporary obstacles.

Measurements were carried out since the commencement of the background monitoring on the 26th July 2019 and record in all weather conditions.

The primary measurement parameter was the equivalent continuous A-weighted Sound Pressure Level, L_{Aeq} 15. The L_{Aeq} 15 is the average sound level recorded over 15 minutes. The A-weighting is used as it places emphasis on the middle frequencies of the noise spectrum, while putting less emphasis on the higher and lower frequencies. This emulates the way the human ear responds to sound.

An alarm beacon was set-up with the noise monitors in order to alert DLT and the Site Supervisor in the case of an exceedance in real-time. If the alarm was triggered, DLT and the Site Supervisor would receive an email and need to note the date and time, document the activity and consider implementing controls and work practices reviewed before re-commencing works.

Monthly checks of the levels of noise measured by each Sound Level Meters are been carried out to validate the data with a portable sound level calibrator. If the instrumentation system registers a discrepancy equal to or greater than 1 dB between consecutive checks, any measurement in the interval between the two checks will be considered invalid.

Delta and Lendlease have established a daily check list on site to ensure all monitors are operating in the field correctly, have adequate sunlight to power the units and that they are reporting consistently. Delta will report any issues immediately to ADE. Furthermore, ADE are checking monitors remotely everyday to ensure the monitors are operating and recording correctly, and ADE will immediately advise Delta of any issues. Monitors will not be removed unless consultation with Delta/Lendlease, TSA and HI has occurred and alternative locations agreed.

1.6 Existing Noise Environment

The main noise sources in the area are:

- Construction noise from the site, including trucks moving to and from the site;
- Traffic noise (trucks and cars) from the adjacent roads (Cudgen Road);
- Foot traffic noises from workers/people walking around and past the site; and
- Noises from the workers and mobile plant who use the parking area.

Sydney Office:

ADE Consulting Group Pty Ltd
Unit 6 / 7 Millennium Court
Silverwater, NSW 2128

Melbourne Office:

ADE Consulting Group Pty Ltd
Unit 4 / 95 Salmon Street
Port Melbourne, VIC 3207

Newcastle Office:

ADE Consulting Group Pty Ltd
Unit 9 / 103 Glenwood Drive
Thornton, NSW 2322

Brisbane Office:

ADE Consulting Group Pty Ltd
Unit 3 / 22 Palmer Place
Murarrie QLD 4172

Contact Us:

Site: www.ADE.Group
Email: info@ade.group
Phone: 1300 976 922

1.7 Meteorological Conditions

Measurements under raining and windy conditions (greater than 18 Km/h) increase the measured levels of noise and when this happens noise levels measured can become highly variable. If noise levels during raining and/or windy conditions need to be analysed the measured level of noise should be reduced by 10dB (A).

Meteorological conditions representative of the site have been provided by the Coolangatta weather station from the Bureau of Meteorology from the Australian Government.

Rain and wind data from the assessed period is attached in the Appendix III. Raining and windy periods are highlighted in blue.

1.8 Out of Hours Work

Nil for this period.

2 RESULTS

Results from the A-weighted equivalent continuous noise level over a 15-minute period for each monitoring location are shown in Appendix V. Data from the raining and windy periods has been omitted from the report as these values are unreliable.

Initially all results are compared through the lowest threshold limit for each location. Then, ADE has requested to our client to provide the distance in between the working location and the position of the sound level meter to determine if a different threshold must be used, considering those periods and the distance provided (refer to Tables 4,5 and 6 below).

Table 4. Noise Level Assessment (001 Adjacent to carpark – NGARA2).

TIME	Distance from the Sound Level Meter					Noise level dB(A) _{15 minutes}	Noise Affection Criteria dB(A)	Highly noisy criteria dB(A)	ASSESSMENT
	>72m	72-36m	36-12m	12-5	≥5				
05/06/2020									
14:45 to 15:00				X		74.2	91	93	Below
11/06/2020									
09:00 to 09:15			X			73.6	85	87	Below
16/06/2020									
08:45 to 09:00				X		77	91	93	Below
09:00 to 09:15				X		74.3	91	93	Below
09:15 to 09:30				X		74.1	91	93	Below
26/06/2020									
14:30 to 14:45					X	75.8	91	93	Below
30/06/2020									
08:15 to 08:30				X		73.3	91	93	Below
08:30 to 08:45				X		74.0	91	93	Below
15:00 to 15:15				X		77.2	91	93	Below

Table 5. Noise Level Assessment (002 Central location – NGARA1).

TIME	Distance from the Sound Level Meter					Noise level dB(A) _{15 minutes}	Noise Affection Criteria dB(A)	Highly noisy criteria dB(A)	ASSESSMENT
	>112m	112-56m	56-18m	18-8	≥8				
10/06/2020									
11:45 to 12:00						78.4	N/A	N/A	ADE performing maintenance

Sydney Office:
ADE Consulting Group Pty Ltd
Unit 6 / 7 Millennium Court
Silverwater, NSW 2128

Melbourne Office:
ADE Consulting Group Pty Ltd
Unit 4 / 95 Salmon Street
Port Melbourne, VIC 3207

Newcastle Office:
ADE Consulting Group Pty Ltd
Unit 9 / 103 Glenwood Drive
Thornton, NSW 2322

Brisbane Office:
ADE Consulting Group Pty Ltd
Unit 3 / 22 Palmer Place
Murarrie QLD 4172

Contact Us:
Site: www.ADE.Group
Email: info@ade.group
Phone: 1300 976 922

Table 6. Noise Level Assessment (003 Eastern section – NGARA3).

TIME	Distance from the Sound Level Meter				Noise level dB(A) _{15 minutes}	Noise Affection Criteria dB(A)	Highly noisy criteria dB(A)	ASSESSMENT
	>94m	94-47m	47-15m	15-7				
01/06/2020								
11:00 to 11:15				X	69.1	87	93	Below
11:15 to 11:30				X	69.3	87	93	Below
13:00 to 13:15				X	69.6	87	93	Below
02/06/2020								
08:15 to 08:30				X	69.1	87	93	Below
08:30 to 08:45				X	77.7	87	93	Below
08:45 to 09:00				X	70.1	87	93	Below
10:00 to 10:15				X	71.1	87	93	Below
12:30 to 12:45				X	73.9	87	93	Below
12:45 to 13:00				X	72.2	87	93	Below
14:45 to 15:00				X	70.2	87	93	Below
15:00 to 15:15				X	71.3	87	93	Below
15:15 to 15:30				X	70.6	87	93	Below
15:30 to 15:45				X	69.8	87	93	Below
15:45 to 16:00				X	71.3	87	93	Below
16:00 to 16:15				X	70.8	87	93	Below
03/06/2020								
07:15 to 07:30				X	71.6	87	93	Below
07:30 to 07:45				X	69.6	87	93	Below
07:45 to 08:00				X	71.6	87	93	Below
08:00 to 08:15				X	70.6	87	93	Below
08:15 to 08:30				X	71.8	87	93	Below
08:45 to 09:00				X	71.7	87	93	Below
09:00 to 09:15				X	70.8	87	93	Below
09:30 to 09:45				X	71.4	87	93	Below
09:45 to 10:00				X	71.5	87	93	Below
10:15 to 10:30				X	70.3	87	93	Below
10:30 to 10:45				X	69.3	87	93	Below
12:30 to 12:45				X	69.8	87	93	Below
12:45 to 13:00				X	70.1	87	93	Below
13:00 to 13:15				X	69.5	87	93	Below
14:45 to 15:00				X	69.1	87	93	Below
05/06/2020								
08:15 to 08:30				X	72.1	87	93	Below
08:30 to 08:45				X	71.4	87	93	Below
09:15 to 09:30				X	69.8	87	93	Below
10:30 to 10:45				X	70.2	87	93	Below
11/06/2020								
12:30 to 12:45				X	72.9	81	87	Below
12/06/2020								
07:30 to 07:45				X	70.6	81	87	Below
07:45 to 08:00				X	70.7	81	87	Below
29/06/2020								
08:45 to 09:00				X	71.9	81	87	Below
09:00 to 09:15				X	72.5	81	87	Below
09:15 to 09:30				X	69.4	81	87	Below
11:45 to 12:00				X	70.5	81	87	Below

Sydney Office:
 ADE Consulting Group Pty Ltd
 Unit 6 / 7 Millennium Court
 Silverwater, NSW 2128

Melbourne Office:
 ADE Consulting Group Pty Ltd
 Unit 4 / 95 Salmon Street
 Port Melbourne, VIC 3207

Newcastle Office:
 ADE Consulting Group Pty Ltd
 Unit 9 / 103 Glenwood Drive
 Thornton, NSW 2322

Brisbane Office:
 ADE Consulting Group Pty Ltd
 Unit 3 / 22 Palmer Place
 Murarrie QLD 4172

Contact Us:
 Site: www.ADE.Group
 Email: info@ade.group
 Phone: 1300 976 922

3 DISCUSSION

As mentioned in the Lendlease Building Pty Ltd Tweed Valley Hospital – Management Plan – Noise and Vibration dated 10 December 2019 Revision 7.0, Figure 4 below details the noise management levels of the nearby receivers.

Work Hours					
Comply with approved work hours. Monday to Friday 7:00 am to 6:00 pm; Saturday: 8:00 am to 1:00 pm TO BE CONFIRMED WITH SSD FINAL CONDITIONS	At all times	Identify and communicate approved work hours/days. Plan works and complete within approved hours. Provide notification to the community.	CM/SM	Documented approval received for work outside of approved hours. Monitoring of work outside of approved hours.	Timely approval of work outside of hours. No complaints. No work outside of approved hours without prior impact assessment and approval from the relevant regulatory authority. No fines.
If work needs to be performed due to unforeseen circumstances (e.g. concrete pour) outside the hours nominated, consent from the Department of Planning must be obtained.	At all times	Prior notice and approval from the Department of Planning must be sought.	GF	Continuous as required.	No complaints from public or adjoining residents or authorities.
Provide advanced notification to potentially affected community stakeholders of out of hour's work/deliveries and high noise or vibration activities.	Prior to works commencing	Prepare appropriate information and distribute to the community at least 3 days prior to the works occurring.	CM/SM	Feedback recorded.	No community complaints. Positive relationship established with project neighbours.
Where applicable if work activities involve noisy works, controls measure MUST be detail as part of the Work Method Statement	Prior to works commencing	In accordance with the Noise and Vibration Management Plan.	Contractor	Continuous	Work Method Statement to contain details of schedule of work and equipment being used.
Where applicable, activities that are found to exceed the 75dB (highly affected noise level) at receivers, respite periods (such as three hours on and 1 hour off).	During noisy works.	Regular monitoring to be undertaken and controls addressed during pre-starts and tool box talks if required,	CM/SM	Noise monitoring results. Number of complaints.	No complaints. No exceedances of predicted levels.
<small>MANAGEMENT PLAN - NOISE AND VIBRATION ISSUE NO: 2.0 ISSUE DATE: 30/01/2017 PROJECT REVISION NO: 00 LENDLEASE BUILDING MANAGEMENT SYSTEM</small>					<small>Page 11 of 18</small>

Figure 4. Noise Management Levels of nearby receivers taken from Lendlease Building Pty Ltd Tweed Valley Hospital – Management Plan – Noise and Vibration dated 10/12/2019.

No exceedances occurred throughout the month of June 2020.

4 CONCLUSION

No exceedances occurred throughout the month of June 2020, thereby indicating adherence to the Lendlease Building Pty Ltd Tweed Valley Hospital – Management Plan – Noise and Vibration dated 10 December 2019 Revision 7.0.

Sydney Office:
ADE Consulting Group Pty Ltd
Unit 6 / 7 Millennium Court
Silverwater, NSW 2128

Melbourne Office:
ADE Consulting Group Pty Ltd
Unit 4 / 95 Salmon Street
Port Melbourne, VIC 3207

Newcastle Office:
ADE Consulting Group Pty Ltd
Unit 9 / 103 Glenwood Drive
Thornton, NSW 2322

Brisbane Office:
ADE Consulting Group Pty Ltd
Unit 3 / 22 Palmer Place
Murarrie QLD 4172

Contact Us:
Site: www.ADE.Group
Email: info@ade.group
Phone: 1300 976 922

Appendix I

Aerial Photograph of Monitoring Locations

Sydney Office:
ADE Consulting Group Pty Ltd
Unit 6 / 7 Millennium Court
Silverwater, NSW 2128

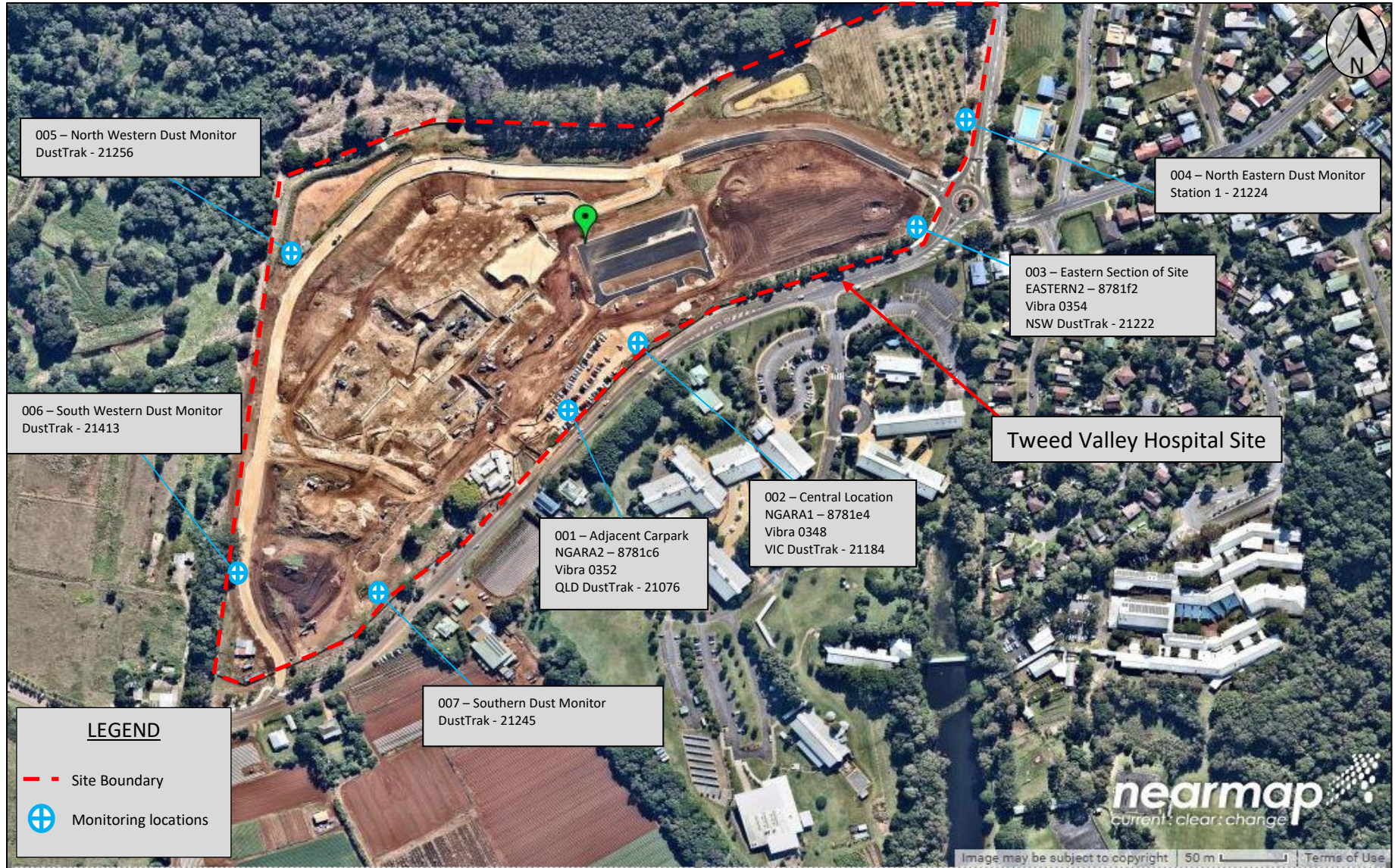
Melbourne Office:
ADE Consulting Group Pty Ltd
Unit 4 / 95 Salmon Street
Port Melbourne, VIC 3207

Newcastle Office:
ADE Consulting Group Pty Ltd
Unit 9 / 103 Glenwood Drive
Thornton, NSW 2322

Brisbane Office:
ADE Consulting Group Pty Ltd
Unit 3 / 22 Palmer Place
Murarrie QLD 4172

Contact Us:
Site: www.ADE.Group
Email: info@ade.group
Phone: 1300 976 922

Aerial photograph of the DLT works area at Kingscliff



Sydney Office:
 ADE Consulting Group Pty Ltd
 Unit 6 / 7 Millennium Court
 Silverwater, NSW 2128

Melbourne Office:
 ADE Consulting Group Pty Ltd
 Unit 4 / 95 Salmon Street
 Port Melbourne, VIC 3207

Newcastle Office:
 ADE Consulting Group Pty Ltd
 Unit 9 / 103 Glenwood Drive
 Thornton, NSW 2322

Brisbane Office:
 ADE Consulting Group Pty Ltd
 Unit 3 / 22 Palmer Place
 Murarrie QLD 4172

Contact Us:
 Site: www.ADE.Group
 Email: info@ade.group
 Phone: 1300 976 922

Appendix II

Monitoring Locations

Sydney Office:
ADE Consulting Group Pty Ltd
Unit 6 / 7 Millennium Court
Silverwater, NSW 2128

Melbourne Office:
ADE Consulting Group Pty Ltd
Unit 4 / 95 Salmon Street
Port Melbourne, VIC 3207

Newcastle Office:
ADE Consulting Group Pty Ltd
Unit 9 / 103 Glenwood Drive
Thornton, NSW 2322

Brisbane Office:
ADE Consulting Group Pty Ltd
Unit 3 / 22 Palmer Place
Murarrie QLD 4172

Contact Us:
Site: www.ADE.Group
Email: info@ade.group
Phone: 1300 976 922



Photograph 1. Representative photo of monitoring location 001 – Adjacent Carpark location, as observed on 18.06.2020.

Sydney Office:
ADE Consulting Group Pty Ltd
Unit 6 / 7 Millennium Court
Silverwater, NSW 2128

Melbourne Office:
ADE Consulting Group Pty Ltd
Unit 4 / 95 Salmon Street
Port Melbourne, VIC 3207

Newcastle Office:
ADE Consulting Group Pty Ltd
Unit 9 / 103 Glenwood Drive
Thornton, NSW 2322

Brisbane Office:
ADE Consulting Group Pty Ltd
Unit 3 / 22 Palmer Place
Murarrie QLD 4172

Contact Us:
Site: www.ADE.Group
Email: info@ade.group
Phone: 1300 976 922



Photograph 2. Representative photo of monitoring location 002 – Central location, as observed on 18.06.2020.

Sydney Office:
ADE Consulting Group Pty Ltd
Unit 6 / 7 Millennium Court
Silverwater, NSW 2128

Melbourne Office:
ADE Consulting Group Pty Ltd
Unit 4 / 95 Salmon Street
Port Melbourne, VIC 3207

Newcastle Office:
ADE Consulting Group Pty Ltd
Unit 9 / 103 Glenwood Drive
Thornton, NSW 2322

Brisbane Office:
ADE Consulting Group Pty Ltd
Unit 3 / 22 Palmer Place
Murarrie QLD 4172

Contact Us:
Site: www.ADE.Group
Email: info@ade.group
Phone: 1300 976 922



Photograph 3. Representative photo of monitoring location 003 – Eastern Section of Site, as observed on 18.06.2020.

Sydney Office:
ADE Consulting Group Pty Ltd
Unit 6 / 7 Millennium Court
Silverwater, NSW 2128

Melbourne Office:
ADE Consulting Group Pty Ltd
Unit 4 / 95 Salmon Street
Port Melbourne, VIC 3207

Newcastle Office:
ADE Consulting Group Pty Ltd
Unit 9 / 103 Glenwood Drive
Thornton, NSW 2322

Brisbane Office:
ADE Consulting Group Pty Ltd
Unit 3 / 22 Palmer Place
Murarrie QLD 4172

Contact Us:
Site: www.ADE.Group
Email: info@ade.group
Phone: 1300 976 922

Appendix III

Rain and Windy Conditions

Sydney Office:
ADE Consulting Group Pty Ltd
Unit 6 / 7 Millennium Court
Silverwater, NSW 2128

Melbourne Office:
ADE Consulting Group Pty Ltd
Unit 4 / 95 Salmon Street
Port Melbourne, VIC 3207

Newcastle Office:
ADE Consulting Group Pty Ltd
Unit 9 / 103 Glenwood Drive
Thornton, NSW 2322

Brisbane Office:
ADE Consulting Group Pty Ltd
Unit 3 / 22 Palmer Place
Murarrie QLD 4172

Contact Us:
Site: www.ADE.Group
Email: info@ade.group
Phone: 1300 976 922

WIND

	Mon	Tue	Wed	Thu	Fri	Sat	Sun
	1/06/2020	2/06/2020	3/06/2020	4/06/2020	5/06/2020	6/06/2020	7/06/2020
00:00 to 00:15	0	12.5	7.3	14.4	14.5	6.4	2.9
00:15 to 00:30	10.2	14.2	7.8	13.6	15.4	9.7	6.1
00:30 to 00:45	8.2	13.6	13.8	12.5	17.9	9.6	7.3
00:45 to 01:00	8.5	12.8	5.4	13.3	16.2	10.6	7.1
01:00 to 01:15	9.1	11.3	4.6	13.1	16.8	7.4	6.6
01:15 to 01:30	7.3	7.8	3.6	13.9	16.4	6	7.4
01:30 to 01:45	1.1	8.6	6.3	14.3	15.1	5.8	7
01:45 to 02:00	0	9.2	6.2	13.6	12.6	7	9
02:00 to 02:15	6.5	7.8	2.4	13.8	14.4	0.2	7.7
02:15 to 02:30	5.7	13.3	5	13.9	14.3	2.7	5.3
02:30 to 02:45	6.6	12.5	7.1	15.3	15.6	7.6	7.6
02:45 to 03:00	8.9	8.5	7.6	15.5	16.5	6.8	5.6
03:00 to 03:15	10.4	4.6	9.7	12.7	17.1	5.7	6.3
03:15 to 03:30	10.3	2.4	8.5	13.4	17.4	9.4	6.3
03:30 to 03:45	10.7	0	1.2	14.2	17	6.3	7.8
03:45 to 04:00	6.6	0	4.4	14.2	17.2	8.4	6.7
04:00 to 04:15	9.4	2.4	5.1	13.2	16.2	4.3	7.3
04:15 to 04:30	10.7	9.5	6	17.2	15.6	0	6.1
04:30 to 04:45	11.2	13.4	5.6	16	15.5	0	5.5
04:45 to 05:00	11.8	10.8	7.7	14.8	14.2	2.5	6.7
05:00 to 05:15	10.8	9	7.7	16.3	13.3	5.4	6.1
05:15 to 05:30	10	8.8	6.1	17	13.7	5.2	6.9
05:30 to 05:45	10.2	7.9	5.6	15.5	11.4	0.6	6.4
05:45 to 06:00	10.3	5.6	2.9	14.3	13.6	3.9	6.7
06:00 to 06:15	10.4	5.7	0	17.3	16.4	7.1	5.5
06:15 to 06:30	11.5	9.5	5.4	20.2	13.7	4.4	6.1
06:30 to 06:45	10.8	8.1	7.6	22	15.5	7.1	5.9
06:45 to 07:00	9.2	8.4	3.9	21.3	15.3	5.4	4.4
07:00 to 07:15	8.5	7.8	4.2	21.9	13.8	7.2	7.5
07:15 to 07:30	7.5	2.9	0.8	21.6	14.5	6.3	4.6
07:30 to 07:45	7.7	6.9	1.2	18.9	16.2	2.4	6.6
07:45 to 08:00	7.6	6.4	5.5	18.6	13.9	2.8	1.2
08:00 to 08:15	10.6	13.6	6.3	22.3	13.6	0.7	5.6
08:15 to 08:30	12.5	5	2.6	22.7	13.3	7.1	1.1
08:30 to 08:45	13.1	6.2	0	22.4	14.1	10.6	5.9
08:45 to 09:00	14.8	11.3	0	25.5	18.6	11.5	8.4
09:00 to 09:15	15.6	9.9	0.9	22.7	19.2	8.8	8.6
09:15 to 09:30	13.8	18.1	10.6	26.2	15.6	8.1	9.1
09:30 to 09:45	15.1	18.5	8.5	19.8	15.1	10	8.2
09:45 to 10:00	17	16.9	7	22.5	16.3	9.9	8.4
10:00 to 10:15	20.1	17.3	4.4	22	16.5	11.2	10
10:15 to 10:30	21	15.3	1.1	24.7	18.5	11	9.4
10:30 to 10:45	18.1	13.4	1.9	21.6	15.6	12.4	9.4
10:45 to 11:00	16.6	16.2	6.7	18.8	19.2	12.1	9
11:00 to 11:15	15.7	19.4	8.7	17.5	16.7	10.6	8.7
11:15 to 11:30	16.2	17.6	8.9	22.2	14.2	10.5	9
11:30 to 11:45	21.1	14.5	6.9	22.4	15	10.4	11.8
11:45 to 12:00	22.9	12.5	11.8	21.2	18.5	11	12.7
12:00 to 12:15	22.9	18.5	13.3	19.8	20.1	15.7	11.3
12:15 to 12:30	22.2	12.7	14	19.6	23.3	18.2	12.2
12:30 to 12:45	20	15	14.5	20.5	19.9	19.9	11.4
12:45 to 13:00	14.9	16.2	13.7	21.3	17.3	21.4	11.8
13:00 to 13:15	11.5	19	12.5	21.2	19.2	21.2	17
13:15 to 13:30	18.6	18	13	24.4	21.6	20.3	17.8
13:30 to 13:45	21.6	13.6	13.3	20.4	22.1	20	17
13:45 to 14:00	21.3	11	17.2	22	19.4	18.8	16.8
14:00 to 14:15	22.2	13	17.1	25.3	18.2	20.2	16.7
14:15 to 14:30	23	15.9	13.9	24.1	20.6	19.1	18.2
14:30 to 14:45	23.5	15	12.8	22.7	20	18.7	18.1
14:45 to 15:00	25	14.4	13.4	18.8	18	19.8	18.1
15:00 to 15:15	26.2	12.1	13	22.4	19.4	17.6	17
15:15 to 15:30	29.1	14.5	12.6	20	19.9	16.7	20
15:30 to 15:45	29.5	9.6	13.7	17.6	20.3	17.3	18
15:45 to 16:00	28.6	11.3	14.9	18.7	20.3	16.3	15.1
16:00 to 16:15	27.9	9.6	14.8	18.6	19.6	15.7	13.7
16:15 to 16:30	29.2	7.3	21.4	20	22.2	16.3	15.6
16:30 to 16:45	30.3	5.3	16.8	16.8	18.8	13.8	13.4
16:45 to 17:00	27	5	15.8	16.4	20.4	12.2	12.8
17:00 to 17:15	27.7	9.6	16.1	14.4	18.4	9.1	14.4
17:15 to 17:30	25.5	7.2	16.7	16	17.2	6.7	19.9
17:30 to 17:45	21.2	7.7	14.2	16.1	16.6	7.4	18.2
17:45 to 18:00	20.8	6.3	11.6	18.2	18.1	8.9	16.7
18:00 to 18:15	16.2	12.5	11.6	16.5	11.8	7.2	15
18:15 to 18:30	14.6	13	12.6	16.1	12.8	5.7	16.1
18:30 to 18:45	11.8	16.8	10.2	12.5	12.6	8.9	11.3
18:45 to 19:00	9.1	17.7	10.1	15.1	12.4	7.8	11.3
19:00 to 19:15	10.6	15.4	11.6	14.2	11.5	7.2	13.2
19:15 to 19:30	14	12.7	12	10.8	11.2	9.8	11.3
19:30 to 19:45	15.8	9.6	10.8	7.6	11	8.6	6.5
19:45 to 20:00	16.5	2.8	9.8	9.4	12.7	6.5	11
20:00 to 20:15	16	2.4	8.5	10.8	12.4	2.5	11.8
20:15 to 20:30	20	6.3	8.4	12.2	12.7	0.6	8
20:30 to 20:45	17	9.4	7	13.7	13.3	5.4	6.1
20:45 to 21:00	13.4	2.4	8.2	12	12.5	8.2	8
21:00 to 21:15	12	4.8	7.2	14.2	13	8.8	10.8
21:15 to 21:30	11.9	5.4	7.1	12.4	12.2	10.8	1.7
21:30 to 21:45	10.9	6.7	9.4	13.3	13	7.5	4.1
21:45 to 22:00	12.7	4.8	10.6	14.9	13.7	6.4	9.4
22:00 to 22:15	11.6	3.2	10.1	15.8	11.4	2.4	10
22:15 to 22:30	13	0.7	10.1	15.5	7.9	5.7	12.7
22:30 to 22:45	13.2	8.6	10.3	15.4	5.7	6.6	11.8
22:45 to 23:00	15	9.7	10.6	16	6.6	4.9	15.3
23:00 to 23:15	12.1	9.2	11.5	16.3	7.6	5.8	13.3
23:15 to 23:30	14.3	8.5	12.7	16	2.9	5.4	12.2
23:30 to 23:45	16.5	9.3	13.2	14.6	7.1	5.9	8.9
23:45 to 00:00	12.8	6.6	12.7	16	6.4	5	2.7

WIND

	Mon 8/06/2020	Tue 9/06/2020	Wed 10/06/2020	Thu 11/06/2020	Fri 12/06/2020	Sat 13/06/2020	Sun 14/06/2020
00:00 to 00:15	6.6	16.1	10.6	9.6	10.7	11.3	0
00:15 to 00:30	1	18.2	14.6	2	12	11.5	0
00:30 to 00:45	0	18.8	18.7	10.4	11.9	10	0
00:45 to 01:00	1.7	18.1	10.6	6.3	10.1	8.5	0
01:00 to 01:15	8.3	18.2	10.4	1.9	11.8	8	11.3
01:15 to 01:30	8.3	16.5	10.9	3.3	12.2	7.6	11.2
01:30 to 01:45	5.7	14.7	10.6	5.7	12.8	7.3	9.6
01:45 to 02:00	4.6	12.7	10.4	10.8	13.8	8.6	8.8
02:00 to 02:15	8.8	15.5	10.7	12.5	14.2	6.7	10.3
02:15 to 02:30	2.1	17.8	10.6	10.6	16.1	9.7	11.9
02:30 to 02:45	4.1	15.9	12	10.6	16.1	10.4	8.3
02:45 to 03:00	1.1	14	7.4	10.8	15.2	11.2	8.8
03:00 to 03:15	5.2	13.4	2.4	10.9	15.6	10.6	7.8
03:15 to 03:30	5.7	15.6	10	9.8	15.4	10.4	8.2
03:30 to 03:45	2.2	17.1	14.9	8.2	14.2	10.8	7.2
03:45 to 04:00	2.6	14	13.2	7.1	13.1	11.2	7.8
04:00 to 04:15	0	15.7	10.1	5	14.3	11.3	11.3
04:15 to 04:30	1.9	15.7	12	2.2	14.8	8.9	11
04:30 to 04:45	7.8	14.9	10.6	6.4	13.7	10.8	12
04:45 to 05:00	9.1	14.2	8.4	5.8	14.4	13.2	10.6
05:00 to 05:15	7.7	14	8.4	1.5	16.2	10.8	11.2
05:15 to 05:30	7.2	14.9	8.4	7.8	16.6	10.4	16
05:30 to 05:45	4.2	18	6.4	7.6	15.4	11.4	14.4
05:45 to 06:00	5.2	14.3	7.7	9.5	15	9.1	14.2
06:00 to 06:15	1.6	14.5	6.5	9.1	12.5	8	16.3
06:15 to 06:30	0	15.6	5.2	6.9	10.6	11.3	18.2
06:30 to 06:45	9	17.6	5.7	6.6	9.4	11.9	21.4
06:45 to 07:00	9.7	19.1	8.7	5.3	7.5	11.8	20.3
07:00 to 07:15	8.9	13.2	8.4	8.7	9.4	10.7	19
07:15 to 07:30	6.6	12.2	9.2	7.2	14	7.8	18
07:30 to 07:45	13.2	13.1	8.3	12.1	15.7	5.8	19.4
07:45 to 08:00	13.9	13.4	9.2	9.8	16.7	1.2	17.4
08:00 to 08:15	14.9	14.9	9.8	7.4	16.2	0	19.5
08:15 to 08:30	17.2	15.8	8.3	7.9	18.1	3.7	17.7
08:30 to 08:45	15.7	14.9	13.7	4.5	19	6	18
08:45 to 09:00	12.7	15.6	11.3	6.7	20.5	5.3	16.3
09:00 to 09:15	13.2	14.9	8.6	6.7	18.1	8.6	17.7
09:15 to 09:30	16.5	18	7.4	5.6	15.5	12.5	19.3
09:30 to 09:45	16.7	15.6	9.5	9.6	16.8	12.8	19.8
09:45 to 10:00	19.6	15.4	10.4	9.2	17.8	10.7	20.3
10:00 to 10:15	19	17.1	10.3	10	18.2	11.2	22.8
10:15 to 10:30	19.5	18.3	11.5	8.9	19.9	12.1	26.6
10:30 to 10:45	20.3	17.2	21.6	9.7	18.1	11.5	30.3
10:45 to 11:00	18	21.1	29.4	10.7	19.5	11.3	30.7
11:00 to 11:15	18.2	25.2	22.6	9.8	18.9	11	32.4
11:15 to 11:30	21.4	23.3	19.1	10.8	21.3	10.6	34.2
11:30 to 11:45	17.3	24.1	13.8	10.9	21.5	9.1	33.3
11:45 to 12:00	15.7	20.7	9.2	12	20.6	3.8	32.7
12:00 to 12:15	14.4	26.6	6.6	9.8	19.5	5.2	28.7
12:15 to 12:30	13.4	18.9	8.4	10.8	21.2	9.2	27.2
12:30 to 12:45	22.3	21.5	9	12.4	23.6	11.5	21.3
12:45 to 13:00	20.4	21.4	9.4	11.6	18.7	12.7	20.4
13:00 to 13:15	22.5	24	16.5	13	21	11.6	18.2
13:15 to 13:30	20.2	25.7	22.2	15.7	20	12.4	14.8
13:30 to 13:45	15.6	23.4	21.9	16.8	21.3	12.5	12.4
13:45 to 14:00	16.7	22.9	20.7	17.9	19.5	12.5	11.3
14:00 to 14:15	26.4	24.2	18.8	18.2	19.7	13.7	11.6
14:15 to 14:30	27.4	24.7	13.2	17.5	17.8	13.8	13.9
14:30 to 14:45	19.6	25.1	20	19.3	20	14.5	16.5
14:45 to 15:00	19.3	24	17.4	20.6	18.7	14.3	13.4
15:00 to 15:15	14.3	26.2	15.7	21	16	11.8	9.2
15:15 to 15:30	16.5	21.4	15.8	15.1	14.8	11	8.8
15:30 to 15:45	16.7	22	16.9	17.6	14.5	12.4	4.5
15:45 to 16:00	18.7	17.2	17.2	18.2	15.9	13.1	8.9
16:00 to 16:15	13.9	16.8	20.7	17.7	14.4	13.3	7.5
16:15 to 16:30	15	19.8	21.5	18.4	13.7	13	8.9
16:30 to 16:45	16.7	18.9	13.3	18	12.8	10.9	8.3
16:45 to 17:00	15.8	20.7	4.3	18	11.5	10.2	7.1
17:00 to 17:15	17.9	19.5	10	17.7	10	8.9	3.5
17:15 to 17:30	15	17	15.6	17	10.4	7.1	11.5
17:30 to 17:45	15.8	14.4	15.4	13.3	10.4	7	9.4
17:45 to 18:00	13.7	15	11.6	15.4	12.5	4.1	5.6
18:00 to 18:15	12.8	13.9	9.3	14.3	10.7	5.8	7.9
18:15 to 18:30	14.7	13	9.2	13	10.2	7.7	12.6
18:30 to 18:45	19	13.6	6.7	12.4	10.4	7.7	2.2
18:45 to 19:00	21	13.2	14.2	12.2	11	10.7	4.4
19:00 to 19:15	20.5	12.8	12.1	13.7	11.9	11.6	0
19:15 to 19:30	17.3	12.5	8.4	14.5	10.4	7.9	0
19:30 to 19:45	16.8	10	13.6	12.5	10.4	4.2	3.3
19:45 to 20:00	16.5	14	11.4	10.9	10.1	4.3	6.1
20:00 to 20:15	16.2	14.3	9	11	9.8	5.4	5.4
20:15 to 20:30	13	12.2	12.4	12.1	10.1	5.2	6.6
20:30 to 20:45	13.6	12.5	11.3	14	9.1	2.3	12
20:45 to 21:00	11.8	15.5	12.2	15.2	9.4	3.4	10.7
21:00 to 21:15	13.4	10.2	13.7	14.2	9.5	7.5	6.9
21:15 to 21:30	12.5	16	10.1	13.7	8	3	7.4
21:30 to 21:45	13.1	12.1	9.2	11.8	9.6	6.9	13.3
21:45 to 22:00	14.6	13.7	10.3	11.8	9	3.7	11.2
22:00 to 22:15	16.1	12.7	12.4	10.7	10.1	5.3	7.7
22:15 to 22:30	14.6	11.2	12.4	10.2	9.1	3.2	9.8
22:30 to 22:45	15.7	17.6	13.4	12.1	11.2	3.4	9
22:45 to 23:00	14.8	15	15.3	10.3	10.7	4.1	3.3
23:00 to 23:15	15.9	12.4	14.4	9.6	10.7	1.9	4.8
23:15 to 23:30	17.6	11.8	12.8	8.5	7.1	0	8.5
23:30 to 23:45	17.4	11.9	2.3	6.3	8.7	0.8	6.5
23:45 to 00:00	17.9	11.3	8	8.2	10.2	4	4.6

WIND

	Mon 15/06/2020	Tue 16/06/2020	Wed 17/06/2020	Thu 18/06/2020	Fri 19/06/2020	Sat 20/06/2020	Sun 21/06/2020
00:00 to 00:15	1.2	14.5	5.7	14.3	16.8	5.3	5.7
00:15 to 00:30	4.5	15.2	1	12.6	16.4	9.6	5.7
00:30 to 00:45	9.4	13.7	6.1	14.5	13.1	12.4	4.8
00:45 to 01:00	4.1	14	0.7	13.9	13.4	11.8	0.6
01:00 to 01:15	0	12.8	4.2	13.7	16.7	11.2	4.6
01:15 to 01:30	1.4	13.1	5.2	11.5	17.5	12.8	4.6
01:30 to 01:45	6.6	11.3	1.9	11.9	15.4	16.2	6.9
01:45 to 02:00	2.7	12.8	7.9	12.1	18	15.1	5.7
02:00 to 02:15	0	12.7	6.3	14	18.9	14.2	5.7
02:15 to 02:30	0	10.9	7	15.4	17.6	9.8	4.9
02:30 to 02:45	1.9	12.6	7.6	17.1	14.4	7.3	1.9
02:45 to 03:00	1	13.4	7.6	15.6	13.7	6.1	4.1
03:00 to 03:15	6.7	13.7	8.3	15.5	16	11.2	4.3
03:15 to 03:30	5.7	11.9	5.3	16.1	16.5	11.6	4.9
03:30 to 03:45	7.9	13.1	0	16	13.2	10.3	2.6
03:45 to 04:00	7	12.1	1.2	13.4	13.3	10.8	1.1
04:00 to 04:15	6.6	12	2.6	14	15.7	10.7	0
04:15 to 04:30	9.1	10.6	3.5	15	16.3	12.1	1.9
04:30 to 04:45	6.6	11.5	0.7	13.4	16.8	13	0
04:45 to 05:00	2.3	13.2	0.6	13	15.8	12.7	4
05:00 to 05:15	0	14.9	6.7	13.7	15.7	12	1.1
05:15 to 05:30	4.5	13.4	7.3	12.5	13.3	11.8	1.3
05:30 to 05:45	7.6	10.3	5.8	12.8	10.1	12.1	0
05:45 to 06:00	6.4	12.2	5.1	12.7	10.6	12.1	0
06:00 to 06:15	7	13.1	11.3	12.6	8.8	13.9	0
06:15 to 06:30	7.4	12.6	10.4	13.6	10	13	3.6
06:30 to 06:45	7.2	12.5	11.9	12.7	10.6	12.4	0
06:45 to 07:00	6.6	14	10.1	12.8	13.2	12.4	2.7
07:00 to 07:15	6.8	14.6	8.5	13.9	15.6	13	7.8
07:15 to 07:30	8.4	14.3	2.3	12.4	14.9	12.4	2.2
07:30 to 07:45	7.7	13.2	0.2	13.7	15.1	11.3	0
07:45 to 08:00	7.3	12.4	2.6	15.1	15.4	13.2	0
08:00 to 08:15	7	12.7	0	14	15.2	14.3	0
08:15 to 08:30	7.8	14.8	7.2	14.3	14.9	13.4	0
08:30 to 08:45	7.7	13.2	12	15.5	16.3	13.7	1.9
08:45 to 09:00	5	14.1	12.7	15	14	14.4	5.4
09:00 to 09:15	8	16.1	13.9	13.8	17.6	12	6.6
09:15 to 09:30	12.2	17.9	13.7	14.5	13	11.2	0
09:30 to 09:45	14	20.4	13.3	17.5	12.1	10.7	2.4
09:45 to 10:00	13.8	19.5	13.6	18.6	18.5	11.4	8.1
10:00 to 10:15	14.3	19.8	14.9	18.2	17.8	10.2	10.6
10:15 to 10:30	13.3	19.2	16.9	18	17	12.4	10.9
10:30 to 10:45	13.4	18.6	16.6	21.6	16	16	11.6
10:45 to 11:00	14.9	18.5	18.5	20.1	14.3	16	13.2
11:00 to 11:15	17.4	18.3	20	20.7	15.1	17.5	11.6
11:15 to 11:30	20	17.6	18	17.4	12.5	15.7	13.3
11:30 to 11:45	19	15.5	21.3	22.2	14.4	16.8	16.5
11:45 to 12:00	19.9	19.8	22.5	19.1	16	15.6	18.4
12:00 to 12:15	17.8	20	23.7	20.5	20.9	15.5	17.5
12:15 to 12:30	17.8	22.2	21.7	20.2	20.1	14.6	19.3
12:30 to 12:45	16.4	22.7	20.4	28.9	18	14.3	19.4
12:45 to 13:00	14.9	19.9	21.5	29.6	15.2	13.9	19.6
13:00 to 13:15	17.1	21.5	19.3	31.2	16.5	14.2	22.2
13:15 to 13:30	20.4	21.6	18	25.7	15.4	14.8	22.3
13:30 to 13:45	19.9	21.7	18.8	25.4	17.6	13.2	22.7
13:45 to 14:00	19.5	19.8	19.4	22.4	14.4	16.1	21.7
14:00 to 14:15	21	19.9	16.6	16	17.9	14.4	21.7
14:15 to 14:30	20	21.5	18.4	19.8	18.6	14.6	22.6
14:30 to 14:45	22.1	19.3	19.6	18.6	14	13.8	23.5
14:45 to 15:00	19.7	21.4	18.6	25.2	15.6	13.8	23.3
15:00 to 15:15	20.1	17.8	22.7	29.2	11.4	14.4	22.7
15:15 to 15:30	18.4	19.5	21.6	21.3	14.3	13.8	23.9
15:30 to 15:45	18.2	19.8	20.5	23.7	12.4	12.5	23.4
15:45 to 16:00	16.4	17.4	21.4	22.7	15.6	13.7	25.1
16:00 to 16:15	19.3	17.7	22.2	21.6	16.2	11	26.4
16:15 to 16:30	17.5	16.4	18.7	21.6	13.9	10.6	24.8
16:30 to 16:45	15.4	13.8	19.5	25.6	13.6	10.2	25.9
16:45 to 17:00	15.6	12.4	17	26.2	10.3	8.8	25.6
17:00 to 17:15	14	10.7	16.8	25.1	7.7	7.4	27.5
17:15 to 17:30	12.7	9.6	16.3	25.3	9.6	8.8	24.7
17:30 to 17:45	12.6	8.6	14.9	24.5	9.2	10.4	25.9
17:45 to 18:00	10.7	10.6	16.1	25.8	10.6	11.6	25.8
18:00 to 18:15	9.7	11.3	15.6	23.4	9.8	9.7	19.1
18:15 to 18:30	11.3	11.4	15.6	23.5	10.3	9.7	11.5
18:30 to 18:45	12.1	10.4	15.9	25.4	10.3	9.4	8.8
18:45 to 19:00	12	9.4	18.3	22.2	9	9.1	8.3
19:00 to 19:15	12.8	9	17.5	20.5	1.8	9.6	7.7
19:15 to 19:30	13.1	9.2	15.5	13.3	4.3	8.9	8
19:30 to 19:45	12.5	8.5	17	13.6	10.1	9	9.5
19:45 to 20:00	13.3	7.4	16	18.1	12.8	8.5	9.6
20:00 to 20:15	12.5	8.5	16.1	15.7	12.1	5	9.1
20:15 to 20:30	12.4	7.7	14.8	15.7	12.2	3	11.8
20:30 to 20:45	13.2	7.3	15	14	14.4	6.9	12.1
20:45 to 21:00	12.2	8.3	14.4	14.4	12.8	6.7	9.6
21:00 to 21:15	14.4	8.2	17.5	17.6	9.1	8	6.6
21:15 to 21:30	14.3	8.4	15.7	13	10.8	8.9	10.4
21:30 to 21:45	13.9	7	13.4	15.4	11.3	8.5	19.5
21:45 to 22:00	12.4	7.3	11.5	17.6	11.6	8.2	13.9
22:00 to 22:15	12.6	5.6	10.3	13.7	12.4	8.8	13.2
22:15 to 22:30	12.6	4.3	11.2	13	12.1	9.7	11
22:30 to 22:45	11.8	7.1	10.9	15.1	10.9	8.3	12.2
22:45 to 23:00	11.8	6	10	14.2	8.4	11.8	12.7
23:00 to 23:15	12.4	6	12.5	14.2	11.9	7.9	14.4
23:15 to 23:30	13.3	5.9	14	13.9	11.8	9.3	14.2
23:30 to 23:45	13.7	6	13.6	14.3	10	7.6	13.8
23:45 to 00:00	13.7	5.4	13.6	15.6	6	3	11.8

WIND

	Mon 22/06/2020	Tue 23/06/2020	Wed 24/06/2020	Thu 25/06/2020	Fri 26/06/2020	Sat 27/06/2020	Sun 28/06/2020
00:00 to 00:15	10.8	5.9	9.6	9.7	7.3	12.8	14
00:15 to 00:30	11.5	2.6	8.7	7.1	8.4	12.4	14.4
00:30 to 00:45	10.9	3.1	11.6	9.3	7	13	13.3
00:45 to 01:00	7.9	8.6	10.9	13.7	4.9	12.2	15.1
01:00 to 01:15	6.6	6.2	2.9	16.2	6.7	13.2	15
01:15 to 01:30	5.4	0.7	6.2	14.6	8.1	12.5	15.3
01:30 to 01:45	6.1	5.7	9.7	14.2	13.8	13.2	14
01:45 to 02:00	8	6.8	9.1	13.2	8.3	12.7	16.5
02:00 to 02:15	7.4	6.2	10	13.3	0	13	18
02:15 to 02:30	6.3	7.1	11.9	13.1	1.2	10.4	18.9
02:30 to 02:45	6.7	9.2	11.5	12.5	6.6	6.4	14.9
02:45 to 03:00	10.3	8.8	9.6	12.5	11.4	10	14.2
03:00 to 03:15	12.2	7.6	10.1	10	12.6	11.2	15.1
03:15 to 03:30	8.4	7.7	14.6	7.8	6.1	11.3	14
03:30 to 03:45	6	7.1	12	12.2	0.4	11.4	16.8
03:45 to 04:00	11.6	9.6	13.2	12.1	3.9	15.5	17.3
04:00 to 04:15	13.7	9.4	12.1	11.8	2.4	16.8	15.6
04:15 to 04:30	14.4	10.3	9.8	9.6	4.8	17.3	12.5
04:30 to 04:45	12.2	10.7	11.5	7.2	4.8	16.9	11.9
04:45 to 05:00	9.2	8	4.5	10.7	4.1	15.8	13.6
05:00 to 05:15	9.2	0.4	10.2	12.6	5.8	15.4	12.8
05:15 to 05:30	8.9	4.3	7.2	11.6	5.9	14.6	15.6
05:30 to 05:45	9.8	12.4	7.4	10.6	3.6	15	15.7
05:45 to 06:00	11.6	13.1	9.7	10	6	15.2	16.7
06:00 to 06:15	10.6	10.2	11.5	7.6	7.3	16.1	16
06:15 to 06:30	11	10.6	8.8	8.5	6.1	13.7	14.5
06:30 to 06:45	11.3	6.5	7.1	9	5.6	15.4	13.6
06:45 to 07:00	10.2	8.3	10	8.5	0	13.7	12.6
07:00 to 07:15	10.7	8.3	9.1	5.2	2.6	12.6	13
07:15 to 07:30	10.3	10.6	7.9	5.5	5	13.4	14.3
07:30 to 07:45	10	9.2	4.8	0.5	11.3	14.6	15.7
07:45 to 08:00	9.7	9.5	3.5	0	9.4	14.5	14.8
08:00 to 08:15	9.2	11.6	1	0	6.8	16	15.1
08:15 to 08:30	11	6.3	7.9	0	1.8	15.4	14.8
08:30 to 08:45	9.2	6.1	6	0	2.8	15.8	14.6
08:45 to 09:00	13.1	9.7	2.2	0	10.6	16.7	19.3
09:00 to 09:15	11.4	15.5	5.5	6	15.6	15.6	18.1
09:15 to 09:30	10.9	15.1	8.4	7.9	13.3	16.7	16.7
09:30 to 09:45	9.5	13.3	6.7	8.8	10.4	13.7	14.8
09:45 to 10:00	3.6	11.5	8.4	13.2	12.6	16.3	15.3
10:00 to 10:15	7.6	14.3	6.3	12	14.3	13	13.8
10:15 to 10:30	7.8	13	7.2	14.7	13.6	13.3	12.4
10:30 to 10:45	8.5	14.3	10.4	14.4	18.9	12.7	11.2
10:45 to 11:00	10.9	11.6	11.2	14.3	19.8	18.1	10.9
11:00 to 11:15	14.8	9.3	10.8	13.1	19.5	21.4	13.1
11:15 to 11:30	11.9	5.7	12.5	14.3	17.4	16.3	13.8
11:30 to 11:45	9.7	12.3	12.2	13.6	16	14.5	15.3
11:45 to 12:00	12.4	12	11.2	13.2	14.2	17.6	17.1
12:00 to 12:15	11.5	12.1	11.3	12.4	16.3	15	14.3
12:15 to 12:30	12.7	10.6	13.7	14.3	17	16.7	12.5
12:30 to 12:45	12.1	9.1	13.7	14.3	16.5	18.4	12.5
12:45 to 13:00	10.8	7.6	14.2	12.5	14.6	21.4	13.8
13:00 to 13:15	5.7	6.8	14.2	10.9	15.2	17.5	13.3
13:15 to 13:30	9.5	6.9	13.1	13.4	15.1	24.8	16.2
13:30 to 13:45	15.7	8.6	12.6	13.8	14.4	29.1	12.4
13:45 to 14:00	16.7	11.5	13.7	13.6	14.4	25.9	9.5
14:00 to 14:15	16.4	13.4	14.6	13.3	15.7	20.9	11
14:15 to 14:30	14.4	14	13.4	13	15.7	18.6	13
14:30 to 14:45	12.6	15.2	14.3	13	15.7	19.9	10.2
14:45 to 15:00	11.3	12.7	14.2	15.7	16.2	19.8	12.5
15:00 to 15:15	11.4	11.4	13.6	17.7	16.3	19.1	12.6
15:15 to 15:30	7.8	11.4	12.5	20	15.5	17.1	12.6
15:30 to 15:45	10	15.1	11	19	15.1	16.2	11.5
15:45 to 16:00	8.5	14.2	10.2	18.7	14.2	14.9	13.3
16:00 to 16:15	6.8	16.8	11	17.1	16.6	13.6	13.1
16:15 to 16:30	6.4	13.9	9.5	13.9	15.1	13.6	13.1
16:30 to 16:45	1.2	10	8.3	13.3	14.9	16.5	11.9
16:45 to 17:00	0	7.1	7.9	11	11.9	15.1	7.7
17:00 to 17:15	4.8	6.8	8.6	9.5	11	14.3	10.7
17:15 to 17:30	6.4	11	6.6	5.5	11	14.2	13.4
17:30 to 17:45	5.9	9.1	10.2	7.1	10.6	14.3	13.1
17:45 to 18:00	9.5	3.6	13.4	7.1	10	14.4	11.9
18:00 to 18:15	9.8	1.1	15.4	9.7	10.6	14.6	11.2
18:15 to 18:30	7.8	10.2	14.8	11.5	10.9	15.6	10.9
18:30 to 18:45	7.7	13.9	11.9	10.3	11.5	10.9	11.4
18:45 to 19:00	10.7	13.4	8.1	11.5	11.5	12.5	11.5
19:00 to 19:15	9.5	10.6	6.5	12.2	10.2	12.8	13.2
19:15 to 19:30	9.2	8.5	6.8	10.7	10.4	14.9	12.4
19:30 to 19:45	8.3	6.6	5.2	9.6	11.6	11	11.8
19:45 to 20:00	8.4	10.1	5.9	9.2	11.9	13.8	10.9
20:00 to 20:15	5.9	6.7	7.3	0.5	12.2	15.1	11.3
20:15 to 20:30	10.6	11.2	6.4	6	11.2	16.7	13.4
20:30 to 20:45	11	13.2	0.1	1.3	11.8	12.1	11.5
20:45 to 21:00	10.2	10.9	2.7	6.8	11	14.2	10.2
21:00 to 21:15	7.2	8.8	3.5	10.4	10.4	13	9.5
21:15 to 21:30	7.5	4.7	3.5	9.3	13.7	14	8
21:30 to 21:45	2.6	5.5	6.8	11.2	14.9	15.9	9.1
21:45 to 22:00	7.1	1.4	5.5	11.4	14.8	16.7	7.9
22:00 to 22:15	5.6	1.4	5.8	8.5	13.1	14.9	10
22:15 to 22:30	11	5	5.1	3.6	15	15.1	9.8
22:30 to 22:45	9.7	3.8	5.6	9.3	13.8	17.4	12.5
22:45 to 23:00	10.4	4.4	6	8.1	12.8	16.8	10
23:00 to 23:15	9.4	0	3.8	4.9	14.3	18	10.2
23:15 to 23:30	9.5	0	2.4	6.8	14.4	16	11.9
23:30 to 23:45	8.6	2.7	5.2	3.4	15.4	15.5	15.6
23:45 to 00:00	8.1	6.9	6.1	4.7	15.7	16	10.4

WIND

	Mon 29/06/2020	Tue 30/06/2020
00:00 to 00:15	8.9	10.6
00:15 to 00:30	10.1	9.7
00:30 to 00:45	7.8	10.9
00:45 to 01:00	6.5	10.3
01:00 to 01:15	9.4	8.5
01:15 to 01:30	5.4	8.6
01:30 to 01:45	1.6	7.8
01:45 to 02:00	11	7
02:00 to 02:15	8.2	7.6
02:15 to 02:30	5.5	9.7
02:30 to 02:45	10.9	8.4
02:45 to 03:00	12	7.4
03:00 to 03:15	10.7	8
03:15 to 03:30	4.6	8.2
03:30 to 03:45	7.4	5.4
03:45 to 04:00	11.6	7.2
04:00 to 04:15	12.1	12.8
04:15 to 04:30	12.1	14
04:30 to 04:45	13.2	11.6
04:45 to 05:00	14	11.3
05:00 to 05:15	13.8	13.3
05:15 to 05:30	14.5	14.8
05:30 to 05:45	13.6	13.8
05:45 to 06:00	13.7	14.3
06:00 to 06:15	13	13
06:15 to 06:30	13.4	12.5
06:30 to 06:45	14.5	13.3
06:45 to 07:00	14.9	12.2
07:00 to 07:15	13.8	12.5
07:15 to 07:30	15.7	10
07:30 to 07:45	15.8	10.7
07:45 to 08:00	16.8	11.5
08:00 to 08:15	18	12.1
08:15 to 08:30	18.5	12.8
08:30 to 08:45	18.1	12.4
08:45 to 09:00	16.4	14.4
09:00 to 09:15	15	15
09:15 to 09:30	13	14.4
09:30 to 09:45	11.8	14.4
09:45 to 10:00	18	15.2
10:00 to 10:15	19.5	14.2
10:15 to 10:30	17	14.4
10:30 to 10:45	21.9	13.9
10:45 to 11:00	19.8	12.7
11:00 to 11:15	21.1	13.8
11:15 to 11:30	19.4	13.7
11:30 to 11:45	19.1	12.1
11:45 to 12:00	16.6	12.7
12:00 to 12:15	17.6	15.5
12:15 to 12:30	17.3	15.7
12:30 to 12:45	15.5	16.5
12:45 to 13:00	14.2	16.5
13:00 to 13:15	17.1	17.2
13:15 to 13:30	19.4	19.2
13:30 to 13:45	22.2	19.4
13:45 to 14:00	21.7	17.9
14:00 to 14:15	22	17.3
14:15 to 14:30	23.3	17.8
14:30 to 14:45	20.7	17.2
14:45 to 15:00	19.6	17.3
15:00 to 15:15	23.3	18
15:15 to 15:30	22.7	16.5
15:30 to 15:45	19	17.4
15:45 to 16:00	21	15
16:00 to 16:15	19.9	14.6
16:15 to 16:30	19	16.1
16:30 to 16:45	18	11.9
16:45 to 17:00	18.9	10
17:00 to 17:15	18.3	10
17:15 to 17:30	18.2	10
17:30 to 17:45	13.5	8.8
17:45 to 18:00	12.5	7.8
18:00 to 18:15	11.5	9.1
18:15 to 18:30	9.4	9
18:30 to 18:45	10.4	7.3
18:45 to 19:00	11.2	9.2
19:00 to 19:15	10.6	11.5
19:15 to 19:30	12.5	10
19:30 to 19:45	13.1	9.4
19:45 to 20:00	13.2	10.2
20:00 to 20:15	12.2	8.9
20:15 to 20:30	10.3	7.8
20:30 to 20:45	9.6	7.9
20:45 to 21:00	9	7.7
21:00 to 21:15	9.8	8.9
21:15 to 21:30	14	9.1
21:30 to 21:45	13	8.5
21:45 to 22:00	10.4	11.9
22:00 to 22:15	12.2	11
22:15 to 22:30	13.3	8.5
22:30 to 22:45	13.3	8.8
22:45 to 23:00	13.3	8
23:00 to 23:15	13.3	7.2
23:15 to 23:30	15.1	8
23:30 to 23:45	12.6	7.6
23:45 to 00:00	11	6.9

RAIN

	Mon	Tue	Wed	Thu	Fri	Sat	Sun
	1/06/2020	2/06/2020	3/06/2020	4/06/2020	5/06/2020	6/06/2020	7/06/2020
00:00 to 00:15	0	0	0	0	0	0	0
00:15 to 00:30	0	0	0	0	0	0	0
00:30 to 00:45	0	0	0	0	0	0	0
00:45 to 01:00	0.2	0	0	0	0	0	0
01:00 to 01:15	0	0	0	0	0	0	0
01:15 to 01:30	0	0	0	0	0	0	0
01:30 to 01:45	0	0	0	0	0	0	0
01:45 to 02:00	0	0	0	0	0	0	0
02:00 to 02:15	0	0	0	0	0	0	0
02:15 to 02:30	0	0	0	0	0	0	0
02:30 to 02:45	0	0	0	0	0	0	0
02:45 to 03:00	0	0	0	0	0	0	0
03:00 to 03:15	0	0	0	0	0	0	0
03:15 to 03:30	0	0	0	0	0	0	0
03:30 to 03:45	0	0	0	0	0	0	0
03:45 to 04:00	0	0	0	0	0	0	0
04:00 to 04:15	0	0	0	0	0	0	0
04:15 to 04:30	0	0	0	0	0	0	0
04:30 to 04:45	0	0	0	0	0	0	0
04:45 to 05:00	0	0	0	0	0	0	0
05:00 to 05:15	0	0	0	0	0	0	0
05:15 to 05:30	0	0	0	0	0	0	0
05:30 to 05:45	0	0	0	0	0	0	0
05:45 to 06:00	0	0	0	0	0	0	0
06:00 to 06:15	0	0	0	0	0	0	0
06:15 to 06:30	0	0	0	0	0	0	0
06:30 to 06:45	0	0	0	0	0	0	0
06:45 to 07:00	0	0	0	0	0	0	0
07:00 to 07:15	0	0	0	0	0	0	0
07:15 to 07:30	0	0	0	0	0	0	0
07:30 to 07:45	0	0	0	0	0	0	0
07:45 to 08:00	0	0	0	0	0	0	0
08:00 to 08:15	0	0	0	0	0	0	0
08:15 to 08:30	0	0	0	0	0	0	0
08:30 to 08:45	0	0	0	0	0	0	0
08:45 to 09:00	0	0	0	0	0	0	0
09:00 to 09:15	0	0	0	0	0	0	0
09:15 to 09:30	0	0	0	0	0	0	0
09:30 to 09:45	0	0	0	0	0	0	0
09:45 to 10:00	0	0	0	0	0	0	0
10:00 to 10:15	0	0	0	0	0	0	0
10:15 to 10:30	0	0	0	0	0	0	0
10:30 to 10:45	0	0	0	0	0	0	0
10:45 to 11:00	0	0	0	0	0	0	0
11:00 to 11:15	0	0	0	0	0	0	0
11:15 to 11:30	0	0	0	0	0	0	0
11:30 to 11:45	0	0	0	0	0	0	0
11:45 to 12:00	0	0	0	0	0	0	0
12:00 to 12:15	0	0	0	0	0	0	0
12:15 to 12:30	0	0	0	0	0	0	0
12:30 to 12:45	0	0	0	0	0	0	0
12:45 to 13:00	0	0	0	0	0	0	0
13:00 to 13:15	0	0	0	0	0	0	0
13:15 to 13:30	0	0	0	0	0	0	0
13:30 to 13:45	0	0	0	0	0	0	0
13:45 to 14:00	0	0	0	0	0	0	0
14:00 to 14:15	0	0	0	0	0	0	0
14:15 to 14:30	0	0	0	0	0	0	0
14:30 to 14:45	0	0	0	0	0	0	0
14:45 to 15:00	0	0	0	0	0	0	0
15:00 to 15:15	0	0	0	0	0	0	0
15:15 to 15:30	0	0	0	0	0	0	0
15:30 to 15:45	0	0	0	0	0	0	0
15:45 to 16:00	0	0	0	0	0	0	0
16:00 to 16:15	0	0	0	0	0	0	0
16:15 to 16:30	0	0	0	0	0	0	0
16:30 to 16:45	0	0	0	0	0	0	0
16:45 to 17:00	0	0	0	0	0	0	0
17:00 to 17:15	0	0	0	0	0	0	0
17:15 to 17:30	0	0	0	0	0	0	0
17:30 to 17:45	0	0	0	0	0	0	0
17:45 to 18:00	0	0	0	0	0	0	0
18:00 to 18:15	0	0	0	0	0	0	0
18:15 to 18:30	0	0	0	0	0	0	0
18:30 to 18:45	0	0	0	0	0	0	0
18:45 to 19:00	0	0	0	0	0	0	0
19:00 to 19:15	0	0	0	0	0	0	0
19:15 to 19:30	0	0	0	0	0	0	0
19:30 to 19:45	0	0	0	0	0	0	0.4
19:45 to 20:00	0	0	0	0	0	0	0
20:00 to 20:15	0	0	0	0	0	0	0
20:15 to 20:30	0	0	0	0	0	0	0
20:30 to 20:45	0	0	0	0	0	0	0
20:45 to 21:00	0	0	0	0	0	0	0
21:00 to 21:15	0	0	0	0	0	0	0
21:15 to 21:30	0	0	0	0	0	0	0
21:30 to 21:45	0	0	0	0	0	0	0
21:45 to 22:00	0	0	0	0	0	0	0
22:00 to 22:15	0	0	0	0	0	0	0
22:15 to 22:30	0	0	0	0	0	0	0
22:30 to 22:45	0	0	0	0	0	0	0
22:45 to 23:00	0	0	0	0	0	0	0
23:00 to 23:15	0	0	0	0	0	0	0
23:15 to 23:30	0	0	0	0	0	0	0
23:30 to 23:45	0	0	0	0	0	0	0
23:45 to 00:00	0	0	0	0	0	0	0

RAIN

	Mon	Tue	Wed	Thu	Fri	Sat	Sun
	8/06/2020	9/06/2020	10/06/2020	11/06/2020	12/06/2020	13/06/2020	14/06/2020
00:00 to 00:15	0	0	0	0	0	0	0
00:15 to 00:30	0	0	1.6	0	0	0	0
00:30 to 00:45	0	0	0	0	0	0	0
00:45 to 01:00	0	0	0	0	0	0	0
01:00 to 01:15	0	0	0.4	3.2	0	0	0.2
01:15 to 01:30	0	0	0	0.2	0	0	0
01:30 to 01:45	0	0	0	0	0	0	0
01:45 to 02:00	0	0	0	0	0	0	0
02:00 to 02:15	0	0	0	0	0	0	0
02:15 to 02:30	0	0	0	0	0	0	0
02:30 to 02:45	0	0	0.2	0	0	0	0.2
02:45 to 03:00	0	0	0	0	0	0	0
03:00 to 03:15	0	0	0	0	0	0	0
03:15 to 03:30	0	0	0	0	0	0	0
03:30 to 03:45	0	0	0	0	0	0	0.2
03:45 to 04:00	0	0	0	0	0	0	0.4
04:00 to 04:15	0	0	0.2	0	0	0	1.8
04:15 to 04:30	0.2	0	0	0	0	0	2.4
04:30 to 04:45	0	0	0	0	0	0	0.4
04:45 to 05:00	0	0	0	0	0	0	0
05:00 to 05:15	0	0	0	0	0	0	0
05:15 to 05:30	0	0	0	0	0	0	0
05:30 to 05:45	0	0	1.2	0	0	0	0
05:45 to 06:00	0	0	0	0.2	0	0	0
06:00 to 06:15	0	0	0	0	0	0	0
06:15 to 06:30	0	0	0	0	0	0	0
06:30 to 06:45	0	0	0	0	0	0	0
06:45 to 07:00	0	0	0	0	0	0	0
07:00 to 07:15	0	0	0	0	0	0	0
07:15 to 07:30	0	0	0	0	0	0	0
07:30 to 07:45	0	0	0.2	0	0	0	0
07:45 to 08:00	0	0	0	0	0	0	0
08:00 to 08:15	0	0	0	0	0	0	1.2
08:15 to 08:30	0	0	0.4	0	0	0	0.6
08:30 to 08:45	0	0	3	0	0	0	0
08:45 to 09:00	0	0	0.2	0	0	0	0
09:00 to 09:15	0	0	0	0	0	0	0
09:15 to 09:30	0	0	0	0	0	0	0
09:30 to 09:45	0	0	0	0	0	0	0
09:45 to 10:00	0	0	0	0	0	0	0.2
10:00 to 10:15	0	0	0	0	0	0	0
10:15 to 10:30	0	0	2.6	0	0	0	0
10:30 to 10:45	0	0	0.4	0	0	0	0
10:45 to 11:00	0	0	0	0.2	0	0	0
11:00 to 11:15	0	0	0.2	0	0	0	0
11:15 to 11:30	0	0	0.4	0	0	0	0
11:30 to 11:45	0	0	0.2	0	0	0	0
11:45 to 12:00	0	0	0	0	0	0	0
12:00 to 12:15	0	0	0	0	0	0	0
12:15 to 12:30	0	0	0	0	0	0	0.6
12:30 to 12:45	0	0	0	0	0	0	0
12:45 to 13:00	0	0	3.4	0	0	0	0
13:00 to 13:15	0	0	3	0	0	0	0
13:15 to 13:30	0	0	0.2	0	0	0	0
13:30 to 13:45	0	0	0	0	0	0	0.4
13:45 to 14:00	0	0	0	0	0	0	1.6
14:00 to 14:15	0	0	0	0	0	0	1
14:15 to 14:30	0	0	0.2	0	0	0	0.8
14:30 to 14:45	0	0	0	0	0	0	1
14:45 to 15:00	0	0	0	0	0	0	0.2
15:00 to 15:15	0	0	0	0	0	0	0
15:15 to 15:30	0	0	0	0	0	0	0
15:30 to 15:45	0	0	0	0	0	0	0
15:45 to 16:00	0	0	0	0	0	0	0
16:00 to 16:15	0	0	0	0	0	0	0
16:15 to 16:30	0	0	2.2	0	0	0	0
16:30 to 16:45	0	0	0.2	0	0	0	0
16:45 to 17:00	0	0	0	0	0	0	0
17:00 to 17:15	0	0	0	0	0	0	0
17:15 to 17:30	0	0	2.4	0	0	0	0
17:30 to 17:45	0	0	1.4	0	0	0	0
17:45 to 18:00	0	0	0	0	0	0	0
18:00 to 18:15	0	0	0	0	0	0	0
18:15 to 18:30	0	0	0	0	0	0	0
18:30 to 18:45	0	0	0	0	0	0	0
18:45 to 19:00	0	0	0	0	0	0	0
19:00 to 19:15	0	0	1.8	0	0	0	0
19:15 to 19:30	0	0	0	0	0	0	0
19:30 to 19:45	0	0	0	0	0	0	0
19:45 to 20:00	0	0	0	0	0	0	0
20:00 to 20:15	0	0.2	0	0	0	0	0
20:15 to 20:30	0	0	0	0	0	0	0
20:30 to 20:45	0	0.4	0	0	0	0	0
20:45 to 21:00	0	0	2	0	0	0	0.4
21:00 to 21:15	0	3	1.4	0	0	0	0
21:15 to 21:30	0	1.4	0.4	0	0	0	0.2
21:30 to 21:45	0	0	0.2	0	0	0	0
21:45 to 22:00	0	0	0	0	0	0	0
22:00 to 22:15	0	0	0	0	0	0	0
22:15 to 22:30	0	0	3.6	0	0	0	0
22:30 to 22:45	0	0	0	0	0	0	0
22:45 to 23:00	0	0	0.8	0	0	0	0
23:00 to 23:15	0	0	0	0	0	0	0
23:15 to 23:30	0	0	0	0	0	0	0
23:30 to 23:45	0	0	0.2	0	0	0	0
23:45 to 00:00	0	0	0.6	0	0	0	0.2

RAIN

	Mon	Tue	Wed	Thu	Fri	Sat	Sun
	15/06/2020	16/06/2020	17/06/2020	18/06/2020	19/06/2020	20/06/2020	21/06/2020
00:00 to 00:15	0	0	0	0	0	0.4	0
00:15 to 00:30	0	0	0	0	0	0	0
00:30 to 00:45	0	0	0	0	0	0	0
00:45 to 01:00	0	0	0	0	0	0	0
01:00 to 01:15	0	0	0	0	0	0	0
01:15 to 01:30	0	0	0	0	0	0	0
01:30 to 01:45	0	0	0	0	0	0	0
01:45 to 02:00	0	0	0	0	0	0	0
02:00 to 02:15	0	0	0	0	0.2	0	0
02:15 to 02:30	0	0	0	0	0	0	0
02:30 to 02:45	0	0	0	0	0	0	0
02:45 to 03:00	0	0	0	0	0	0	0
03:00 to 03:15	0	0	0	0	0	0	0
03:15 to 03:30	0	0	0	0	0	0	0
03:30 to 03:45	0	0	0	0	0.2	0	0
03:45 to 04:00	0	0	0	0	0	0	0
04:00 to 04:15	0	0	0	0	0	0	0
04:15 to 04:30	0	0	0	0	0	0.2	0
04:30 to 04:45	0	0	0	0	0	0	0
04:45 to 05:00	0	0	0	0	0	0	0
05:00 to 05:15	0	0	0	0	0.6	0.4	0
05:15 to 05:30	0	0	0	0	0	0	0
05:30 to 05:45	0	0	0	0	0	0	0
05:45 to 06:00	0	0	0	0	0.2	0	0
06:00 to 06:15	0	0	0	0	0	0	0
06:15 to 06:30	0	0	0	0	0.2	0	0
06:30 to 06:45	0	0	0.2	0	0	0.2	0
06:45 to 07:00	0	0	0	0	0	0	0
07:00 to 07:15	0	0	0	0	0	0	0
07:15 to 07:30	0	0	0	0	0	0	0
07:30 to 07:45	0	0	0	0	0	0	0
07:45 to 08:00	0	0	0	0	0	0	0
08:00 to 08:15	0	0	0	0	0	0	0
08:15 to 08:30	0	0	0	0	0.2	0	0
08:30 to 08:45	0	0	0	0	0.2	0	0
08:45 to 09:00	0	0	0	0	0	0	0
09:00 to 09:15	0	0	0	0	0	0	0
09:15 to 09:30	0	0	0	0	0	0	0
09:30 to 09:45	0	0	0	0	0	0	0
09:45 to 10:00	0	0	0	0	0.4	0	0
10:00 to 10:15	0	0	0	0	0	0	0
10:15 to 10:30	0	0	0	0	0	0	0
10:30 to 10:45	0	0	0	0	0	0	0
10:45 to 11:00	0	0	0	0	0	0	0
11:00 to 11:15	0	0	0	0	0	0	0
11:15 to 11:30	0	0	0	0	0.2	0	0
11:30 to 11:45	0.2	0	0	0	0	0	0
11:45 to 12:00	0	0	0	0	0	0	0
12:00 to 12:15	0	0	0	0.2	0	0	0
12:15 to 12:30	0	0	0	0	0	0	0
12:30 to 12:45	0	0	0	0	0	0	0
12:45 to 13:00	0	0	0	0	0	0	0
13:00 to 13:15	0	0	0	0	0	0	0
13:15 to 13:30	0	0	0	0	0	0	0
13:30 to 13:45	0	0	0	0.2	0	0	0
13:45 to 14:00	0	0	0	0	0	0	0
14:00 to 14:15	0	0	0	0.4	0	0	0
14:15 to 14:30	0	0	0	0.6	0	0	0.2
14:30 to 14:45	0	0	0	3.2	0	0	0
14:45 to 15:00	0	0	0	1.2	0	0	0
15:00 to 15:15	0	0	0	2.8	0	0	0
15:15 to 15:30	0	0	0	0	0	0	0
15:30 to 15:45	0	0	0	0	0	0	0
15:45 to 16:00	0	0	0	0	0	0	0
16:00 to 16:15	0	0	0	0	0	0	0
16:15 to 16:30	0	0	0	0	0	0	0
16:30 to 16:45	0	0	0	0	0	0	0
16:45 to 17:00	0	0	0	0	0	0	0
17:00 to 17:15	0	0	0	0.2	0	0	0
17:15 to 17:30	0	0	0	0	0	0	0
17:30 to 17:45	0	0	0	0	0	0	0
17:45 to 18:00	0	0	0	0	0	0	0
18:00 to 18:15	0	0	0	0	0	0	0
18:15 to 18:30	0	0	0	0	0	0	0
18:30 to 18:45	0	0	0	0	0	0	0
18:45 to 19:00	0	0	0	0	0	0	0
19:00 to 19:15	0	0	0	0	0	0	0
19:15 to 19:30	0	0	0	0	0	0	0
19:30 to 19:45	0	0	0	0	0	0	0
19:45 to 20:00	0	0	0	0	0	0	0
20:00 to 20:15	0	0	0	0.2	0	0	0
20:15 to 20:30	0	0	0	0	0	0	0
20:30 to 20:45	0	0	0	0	0	0	0
20:45 to 21:00	0	0	0	0	0.2	0	0
21:00 to 21:15	0	0	0	0	0.2	0	0
21:15 to 21:30	0	0	0	0.2	0.4	0	0
21:30 to 21:45	0	0	0	0	0	0	0.8
21:45 to 22:00	0	0	0	0	0	0	0.4
22:00 to 22:15	0	0	0	0.4	0	0	0.2
22:15 to 22:30	0	0	0	0	0	0	0
22:30 to 22:45	0	0	0	0	0	0	0
22:45 to 23:00	0	0	0	0	0	0	0
23:00 to 23:15	0	0	0	0	0	0	0
23:15 to 23:30	0	0	0	0	0	0	0
23:30 to 23:45	0	0	0	0	0	0	0
23:45 to 00:00	0	0	0	0	0	0	0

RAIN

	Mon	Tue	Wed	Thu	Fri	Sat	Sun
	22/06/2020	23/06/2020	24/06/2020	25/06/2020	26/06/2020	27/06/2020	28/06/2020
00:00 to 00:15	0	0	0	0	0	0	0
00:15 to 00:30	0	0	0	0	0	0	0
00:30 to 00:45	0	0	0	0	0	0	0
00:45 to 01:00	0	0	0	0	0	0	0
01:00 to 01:15	0	0	0	0	0	0	0
01:15 to 01:30	0	0	0	0	0	0	0
01:30 to 01:45	0	0	0	0	0	0	0
01:45 to 02:00	0	0	0	0	0	0	0
02:00 to 02:15	0	0	0	0	0	0	0
02:15 to 02:30	0	0	0	0	0	0	0
02:30 to 02:45	0	0	0	0	0	0	0
02:45 to 03:00	0	0	0	0	0	0	0
03:00 to 03:15	0	0	0	0	0	0	0
03:15 to 03:30	0	0	0	0	0	0	0
03:30 to 03:45	0	0	0	0	0	0	0
03:45 to 04:00	0	0	0	0	0	0	0
04:00 to 04:15	0	0	0	0	0	0	0
04:15 to 04:30	0	0	0	0	0	0	0
04:30 to 04:45	0	0	0	0	0	0	0
04:45 to 05:00	0	0	0	0	0	0	0
05:00 to 05:15	0	0	0	0	0.2	0	0
05:15 to 05:30	0	0	0	0	0	0	0
05:30 to 05:45	0	0	0	0	0	0	0
05:45 to 06:00	0	0	0	0	0	0	0
06:00 to 06:15	0	0	0	0	0	0	0
06:15 to 06:30	0	0	0	0	0	0	0
06:30 to 06:45	0	0	0	0	0	0	0
06:45 to 07:00	0	0	0	0	0	0	0
07:00 to 07:15	0	0	0	0	0	0	0
07:15 to 07:30	0	0	0	0	0	0	0
07:30 to 07:45	0	0	0	0	0	0	0
07:45 to 08:00	0	0	0	0	0	0	0
08:00 to 08:15	0	0	0	0	0	0	0
08:15 to 08:30	0	0	0	0	0	0	0
08:30 to 08:45	0	0	0	0	0	0	0
08:45 to 09:00	0	0	0	0	0	0	0
09:00 to 09:15	0	0	0	0	0	0	0
09:15 to 09:30	0	0	0	0	0	0	0
09:30 to 09:45	0	0	0	0	0	0	0.2
09:45 to 10:00	0	0	0	0	0	0	0
10:00 to 10:15	0	0	0	0	0	0	0
10:15 to 10:30	0	0	0	0	0	0	0
10:30 to 10:45	0	0	0	0	0	0	0
10:45 to 11:00	0	0	0	0	0	0	0
11:00 to 11:15	0	0	0	0	0	0	0
11:15 to 11:30	0	0	0	0	0	0	0
11:30 to 11:45	0	0	0	0	0	0	0
11:45 to 12:00	0.2	0	0	0	0	0	0.2
12:00 to 12:15	0	0	0	0	0	0	0.2
12:15 to 12:30	0	0	0	0	0	0	0.2
12:30 to 12:45	0	0	0	0	0	0	0
12:45 to 13:00	0	0	0	0	0	0	0
13:00 to 13:15	0	0	0	0	0	0	0
13:15 to 13:30	0	0	0	0	0	0	0
13:30 to 13:45	0	0.2	0	0	0	0	0
13:45 to 14:00	0	0	0	0	0	0	0
14:00 to 14:15	0	0	0	0	0	0	0.2
14:15 to 14:30	0	0	0	0	0	0	0
14:30 to 14:45	0	0	0	0	0	0	0
14:45 to 15:00	0	0	0	0	0	0	0
15:00 to 15:15	0	0	0	0	0	0	0
15:15 to 15:30	0	0	0	0	0	0	0
15:30 to 15:45	0	0	0	0	0	0	0
15:45 to 16:00	0	0	0	0	0	0	0
16:00 to 16:15	0	0	0	0	0	0	0.2
16:15 to 16:30	0	0	0	0	0	0	0
16:30 to 16:45	0	0	0	0	0	0	0
16:45 to 17:00	0	0	0	0	0	0	0.2
17:00 to 17:15	0	0	0	0	0	0	0
17:15 to 17:30	0	0	0	0	0	0	0
17:30 to 17:45	0	0	0	0	0	0	0
17:45 to 18:00	0	0	0	0	0	0	0
18:00 to 18:15	0	0	0	0	0	0	0
18:15 to 18:30	0	0	0	0	0	0	0
18:30 to 18:45	0	0	0	0	0	0	0
18:45 to 19:00	0	0	0	0	0	0	0
19:00 to 19:15	0	0	0	0	0	0	0
19:15 to 19:30	0	0	0	0	0	0	0
19:30 to 19:45	0	0	0	0	0	0	0
19:45 to 20:00	0	0	0	0	0	0	0
20:00 to 20:15	0	0	0	0	0	0	0
20:15 to 20:30	0	0	0	0	0	0	0
20:30 to 20:45	0	0	0	0	0	0	0
20:45 to 21:00	0	0	0	0	0	0	0
21:00 to 21:15	0	0	0	0	0	0	0
21:15 to 21:30	0	0	0	0	0	0	0
21:30 to 21:45	0	0	0	0	0	0	0
21:45 to 22:00	0	0	0	0	0	0	0
22:00 to 22:15	0	0	0	0	0	0	0
22:15 to 22:30	0	0	0	0	0	0	0
22:30 to 22:45	0	0	0	0	0	0	0
22:45 to 23:00	0	0	0	0	0	0	0
23:00 to 23:15	0	0	0	0	0	0	0
23:15 to 23:30	0	0	0	0	0	0	0
23:30 to 23:45	0	0	0	0	0	0	0
23:45 to 00:00	0	0	0	0	0	0	0

RAIN

	Mon	Tue
	29/06/2020	30/06/2020
00:00 to 00:15	0	0
00:15 to 00:30	0	0
00:30 to 00:45	0	0
00:45 to 01:00	0	0
01:00 to 01:15	0	0
01:15 to 01:30	0	0
01:30 to 01:45	0	0
01:45 to 02:00	0	0
02:00 to 02:15	0	0
02:15 to 02:30	0	0
02:30 to 02:45	0	0
02:45 to 03:00	0	0
03:00 to 03:15	0	0
03:15 to 03:30	0	0
03:30 to 03:45	0	0
03:45 to 04:00	0	0
04:00 to 04:15	0	0
04:15 to 04:30	0	0
04:30 to 04:45	0	0
04:45 to 05:00	0	0
05:00 to 05:15	0	0
05:15 to 05:30	0	0
05:30 to 05:45	0	0
05:45 to 06:00	0	0
06:00 to 06:15	0	0
06:15 to 06:30	0	0
06:30 to 06:45	0	0
06:45 to 07:00	0	0
07:00 to 07:15	0	0
07:15 to 07:30	0	0
07:30 to 07:45	0	0
07:45 to 08:00	0	0
08:00 to 08:15	0	0
08:15 to 08:30	0	0
08:30 to 08:45	0	0
08:45 to 09:00	0	0
09:00 to 09:15	0	0
09:15 to 09:30	0	0
09:30 to 09:45	0	0
09:45 to 10:00	0	0
10:00 to 10:15	0	0
10:15 to 10:30	0	0
10:30 to 10:45	0	0
10:45 to 11:00	0	0
11:00 to 11:15	0	0
11:15 to 11:30	0	0
11:30 to 11:45	0	0
11:45 to 12:00	0	0
12:00 to 12:15	0	0
12:15 to 12:30	0	0
12:30 to 12:45	0	0
12:45 to 13:00	0.2	0
13:00 to 13:15	0	0
13:15 to 13:30	0	0
13:30 to 13:45	0	0
13:45 to 14:00	0	0
14:00 to 14:15	0	0
14:15 to 14:30	0	0
14:30 to 14:45	0	0
14:45 to 15:00	0	0
15:00 to 15:15	0	0
15:15 to 15:30	0	0
15:30 to 15:45	0	0
15:45 to 16:00	0	0
16:00 to 16:15	0	0
16:15 to 16:30	0	0
16:30 to 16:45	0	0
16:45 to 17:00	0	0
17:00 to 17:15	0	0
17:15 to 17:30	0	0
17:30 to 17:45	0	0
17:45 to 18:00	0	0
18:00 to 18:15	0	0
18:15 to 18:30	0	0
18:30 to 18:45	0	0
18:45 to 19:00	0	0
19:00 to 19:15	0	0
19:15 to 19:30	0	0
19:30 to 19:45	0	0
19:45 to 20:00	0	0
20:00 to 20:15	0	0
20:15 to 20:30	0	0
20:30 to 20:45	0	0
20:45 to 21:00	0	0
21:00 to 21:15	0	0
21:15 to 21:30	0	0
21:30 to 21:45	0	0
21:45 to 22:00	0	0
22:00 to 22:15	0	0
22:15 to 22:30	0	0
22:30 to 22:45	0	0
22:45 to 23:00	0	0
23:00 to 23:15	0	0
23:15 to 23:30	0	0
23:30 to 23:45	0	0
23:45 to 00:00	0	0

Appendix IV

ADE Site Time Summary

Sydney Office:

ADE Consulting Group Pty Ltd
Unit 6 / 7 Millennium Court
Silverwater, NSW 2128

Melbourne Office:

ADE Consulting Group Pty Ltd
Unit 4 / 95 Salmon Street
Port Melbourne, VIC 3207

Newcastle Office:

ADE Consulting Group Pty Ltd
Unit 9 / 103 Glenwood Drive
Thornton, NSW 2322

Brisbane Office:

ADE Consulting Group Pty Ltd
Unit 3 / 22 Palmer Place
Murarrie QLD 4172

Contact Us:

Site: www.ADE.Group
Email: info@ade.group
Phone: 1300 976 922

Date of site visit	Time of site visit
01.06.2020	1030 to 1315
04.06.2020	1030 to 1400
10.06.2020	0830 to 1400
12.06.2020	1115 to 1445
15.06.2020	1000 to 1400
18.06.2020	1015 to 1300
29.06.2020	1045 to 1330

Sydney Office:
 ADE Consulting Group Pty Ltd
 Unit 6 / 7 Millennium Court
 Silverwater, NSW 2128

Melbourne Office:
 ADE Consulting Group Pty Ltd
 Unit 4 / 95 Salmon Street
 Port Melbourne, VIC 3207

Newcastle Office:
 ADE Consulting Group Pty Ltd
 Unit 9 / 103 Glenwood Drive
 Thornton, NSW 2322

Brisbane Office:
 ADE Consulting Group Pty Ltd
 Unit 3 / 22 Palmer Place
 Murarrie QLD 4172

Contact Us:
 Site: www.ADE.Group
 Email: info@ade.group
 Phone: 1300 976 922

Appendix V

A-weighted equivalent continuous noise level over a 15-minute period for each monitoring location

Sydney Office:
ADE Consulting Group Pty Ltd
Unit 6 / 7 Millennium Court
Silverwater, NSW 2128

Melbourne Office:
ADE Consulting Group Pty Ltd
Unit 4 / 95 Salmon Street
Port Melbourne, VIC 3207

Newcastle Office:
ADE Consulting Group Pty Ltd
Unit 9 / 103 Glenwood Drive
Thornton, NSW 2322

Brisbane Office:
ADE Consulting Group Pty Ltd
Unit 3 / 22 Palmer Place
Murarrie QLD 4172

Contact Us:
Site: www.ADE.Group
Email: info@ade.group
Phone: 1300 976 922

001 Adjacent to carpark – NGARA2

001 - Adjacent Carpark

	Limit 168m= 73 High Noise 168m= 75	Limit 56m= 79 High noise 56= 81	Limit 18m= 85 High Noise 18m= 87	Limit 5m=			
	Mon	Tue	Wed	Thu	Fri	Sat	Sun
	1/06/2020	2/06/2020	3/06/2020	4/06/2020	5/06/2020	6/06/2020	7/06/2020
00:00 to 00:15	51.8	51.3	49.4	46.8	54.2	57.3	57
00:15 to 00:30	49.1	53.3	36.6	49.1	51.7	58.9	58
00:30 to 00:45	51.2	51.3	34.2	46.6	51.5	57.5	55.4
00:45 to 01:00	Wind/Rain	45.6	35.5	52.6	39.3	53.3	53.7
01:00 to 01:15	40.5	38.8	50.7	48.5	39.7	54.1	55.7
01:15 to 01:30	40.5	45.1	50.6	40.7	53.6	53.7	57.6
01:30 to 01:45	45.1	50.8	51.7	51.3	46.9	54.7	54.1
01:45 to 02:00	48.7	52.1	49.6	52.3	45.5	54.5	54.3
02:00 to 02:15	48.1	43.7	50.8	48.8	51.3	45	51
02:15 to 02:30	47.7	37.6	45.2	46	52.4	50.1	55.6
02:30 to 02:45	50.6	35	34.6	45.6	45.4	54.5	56.5
02:45 to 03:00	45.8	47.7	42.5	49.7	49.1	45.6	55
03:00 to 03:15	52.9	46.4	34.4	41.7	40.7	51.2	51.7
03:15 to 03:30	52.2	52	45.8	51.5	50	50.6	51.8
03:30 to 03:45	49	36.9	52	42.6	49.3	52.9	50.7
03:45 to 04:00	51.2	47.8	48.9	47	55	43.1	52.8
04:00 to 04:15	51.4	47.6	54	54.4	52.6	49.3	52.1
04:15 to 04:30	50.5	53.7	48.1	54.5	52.8	50.6	53
04:30 to 04:45	57.6	54.3	56.6	56.7	58.7	55.7	51.4
04:45 to 05:00	55.2	57.6	56.2	56.8	56.3	54.8	52.8
05:00 to 05:15	59	59.8	58.9	58.4	58.3	55.9	54.4
05:15 to 05:30	59.7	57.6	57.5	59.5	57.5	54.2	52.6
05:30 to 05:45	60.3	60.1	61.7	60	61.2	58.8	56.6
05:45 to 06:00	61.9	61.1	61	62	63.3	61.2	58.7
06:00 to 06:15	62.9	63	62.7	63.9	62.9	60.6	58.9
06:15 to 06:30	63	63.8	63.6	Wind/Rain	62.5	60.9	57.5
06:30 to 06:45	63.8	64.9	64.9	Wind/Rain	64.4	61.9	59.7
06:45 to 07:00	64.5	65.6	65.5	Wind/Rain	64.5	62.6	60.2
07:00 to 07:15	65.6	67	67.1	Wind/Rain	66.2	64.4	62.7
07:15 to 07:30	66	67.3	66.7	Wind/Rain	65	64.2	61.6
07:30 to 07:45	66.4	68.3	67.3	Wind/Rain	68.7	65.2	64
07:45 to 08:00	68.9	70.7	68.4	Wind/Rain	68.5	65.8	64.7
08:00 to 08:15	70.3	71.4	70.4	Wind/Rain	70.6	66.1	65.8
08:15 to 08:30	70.4	71.1	70.7	Wind/Rain	71.3	65.9	65.4
08:30 to 08:45	70.6	71.7	71.3	Wind/Rain	72.7	66.9	66.2
08:45 to 09:00	70.8	71.6	71.1	Wind/Rain	Wind/Rain	67.5	66.5
09:00 to 09:15	69.6	70	69.9	Wind/Rain	Wind/Rain	67.6	66.9
09:15 to 09:30	68.1	Wind/Rain	69.2	Wind/Rain	71.4	67.4	66.8
09:30 to 09:45	68	Wind/Rain	68.5	Wind/Rain	71.1	67.5	66.9
09:45 to 10:00	68.1	67.7	68.5	Wind/Rain	69.7	68.5	66.6
10:00 to 10:15	Wind/Rain	68.2	68.1	Wind/Rain	70	68	68.3
10:15 to 10:30	Wind/Rain	68.2	67.1	Wind/Rain	Wind/Rain	68.3	67.5
10:30 to 10:45	Wind/Rain	68.5	67.9	Wind/Rain	69.6	69.1	68.3
10:45 to 11:00	68	69.1	68	Wind/Rain	Wind/Rain	68.6	68.2
11:00 to 11:15	68	Wind/Rain	68.8	69.5	70.9	67.9	67.7
11:15 to 11:30	68.2	67.4	68.8	Wind/Rain	70.9	68.2	67.4
11:30 to 11:45	Wind/Rain	67.2	Wind/Rain	Wind/Rain	72.5	67.7	67.5
11:45 to 12:00	Wind/Rain	67.4	67.3	Wind/Rain	Wind/Rain	68.6	67.9
12:00 to 12:15	Wind/Rain	Wind/Rain	68.1	Wind/Rain	Wind/Rain	68.5	67.9
12:15 to 12:30	Wind/Rain	68.5	68.2	Wind/Rain	Wind/Rain	Wind/Rain	67.7
12:30 to 12:45	Wind/Rain	68.3	68.1	Wind/Rain	Wind/Rain	Wind/Rain	67.1
12:45 to 13:00	68.8	68.4	66.9	Wind/Rain	69	Wind/Rain	67
13:00 to 13:15	68.8	Wind/Rain	68.7	Wind/Rain	Wind/Rain	Wind/Rain	67.7
13:15 to 13:30	Wind/Rain	67.7	67.8	Wind/Rain	Wind/Rain	Wind/Rain	66.8
13:30 to 13:45	Wind/Rain	67.3	68.1	Wind/Rain	Wind/Rain	Wind/Rain	67.9
13:45 to 14:00	Wind/Rain	68.4	68.9	Wind/Rain	Wind/Rain	Wind/Rain	66.9
14:00 to 14:15	Wind/Rain	67.3	67.6	Wind/Rain	Wind/Rain	Wind/Rain	69.8
14:15 to 14:30	Wind/Rain	68.5	68.3	Wind/Rain	Wind/Rain	Wind/Rain	Wind/Rain
14:30 to 14:45	Wind/Rain	68.4	68.7	Wind/Rain	Wind/Rain	Wind/Rain	Wind/Rain
14:45 to 15:00	Wind/Rain	69	69.1	Wind/Rain	74.2	Wind/Rain	Wind/Rain
15:00 to 15:15	Wind/Rain	68.6	69.7	Wind/Rain	Wind/Rain	68	67.3
15:15 to 15:30	Wind/Rain	69.8	Wind/Rain	Wind/Rain	Wind/Rain	67.5	Wind/Rain
15:30 to 15:45	Wind/Rain	70.1	Wind/Rain	70.3	Wind/Rain	67.3	67.2
15:45 to 16:00	Wind/Rain	69.4	70.4	Wind/Rain	Wind/Rain	68.1	67.1
16:00 to 16:15	Wind/Rain	69.4	69.9	Wind/Rain	Wind/Rain	68.1	67.5
16:15 to 16:30	Wind/Rain	69	Wind/Rain	Wind/Rain	Wind/Rain	67.6	67.1
16:30 to 16:45	Wind/Rain	68.9	69.9	68.5	Wind/Rain	67.3	67.3
16:45 to 17:00	Wind/Rain	68.1	69.8	68.6	Wind/Rain	67.9	66
17:00 to 17:15	Wind/Rain	67.4	68.9	68.8	Wind/Rain	67.4	66.1
17:15 to 17:30	Wind/Rain	67.9	68.5	68.8	69	67.1	Wind/Rain
17:30 to 17:45	Wind/Rain	67.3	68.7	67.8	69	66.7	Wind/Rain
17:45 to 18:00	Wind/Rain	67.1	68.5	Wind/Rain	Wind/Rain	66.8	64.5
18:00 to 18:15	65.6	65.9	67.9	67	68	66.1	64.7
18:15 to 18:30	64.3	65.8	66.5	66.4	67.3	65	64
18:30 to 18:45	63.5	64.6	65.4	66	66.2	65.5	64
18:45 to 19:00	63.3	63	64.2	64.9	65.7	64.5	62.1
19:00 to 19:15	62.4	62.7	63.4	63.2	64.5	63.8	62.9
19:15 to 19:30	61.2	62.3	62.9	64	63.2	63.9	61.9
19:30 to 19:45	60.5	59.9	61.7	62.6	63.5	62.7	Wind/Rain
19:45 to 20:00	60.7	60.5	62.9	62.7	62.3	62.5	59.3
20:00 to 20:15	59.6	61.2	61.3	62	62.6	61.5	61.8
20:15 to 20:30	Wind/Rain	62.1	61.1	63.4	62.6	62.5	60
20:30 to 20:45	59.5	61.8	59.9	62	61.2	62.2	61.6
20:45 to 21:00	58.8	60.3	60.8	63.4	61.4	61.8	60.4
21:00 to 21:15	57	59.6	58.8	61.8	60.2	60.8	60.9
21:15 to 21:30	57.8	58.6	59.5	61.4	62.3	60.8	60.7
21:30 to 21:45	57.5	58.7	58.7	58.7	61.1	59.2	60.6
21:45 to 22:00	57.4	57.7	58.4	59.6	60.6	61.1	59
22:00 to 22:15	57.7	56.8	63	61.9	61.8	59.3	57.6
22:15 to 22:30	55.3	57.3	57.4	59.2	60	60.1	59.1
22:30 to 22:45	56.1	58.1	58.2	56.6	59.3	57.4	58.9
22:45 to 23:00	54.9	55	56.8	57.5	58.4	61.3	55.5
23:00 to 23:15	54.4	52.3	55	55.7	60	60.3	55.7
23:15 to 23:30	51.9	56	54.7	56.7	56.5	60.2	52.9
23:30 to 23:45	53.4	53.1	51.8	55.2	59.8	59.6	51.5
23:45 to 00:00	52.3	53.2	56	55.2	57.6	58.8	52

001 Adjacent to carpark – NGARA2

001 - Adjacent Car

	91						
H	93						
	Mon	Tue	Wed	Thu	Fri	Sat	Sun
	8/06/2020	9/06/2020	10/06/2020	11/06/2020	12/06/2020	13/06/2020	14/06/2020
00:00 to 00:15	52.5	52.2	52.1	52.2	52.3	55.7	58.6
00:15 to 00:30	50.3	Wind/Rain	Wind/Rain	44.2	50.1	58.7	57.4
00:30 to 00:45	51.5	Wind/Rain	Wind/Rain	49.7	53.2	56.9	55.4
00:45 to 01:00	49.8	Wind/Rain	55.9	49.6	51.6	58.9	58.3
01:00 to 01:15	48.3	Wind/Rain	Wind/Rain	Wind/Rain	47.9	49.9	Wind/Rain
01:15 to 01:30	46.2	39.2	49.3	Wind/Rain	48.6	53.1	59.2
01:30 to 01:45	47.3	48.6	49.8	51.8	49.4	54.1	56.3
01:45 to 02:00	51.6	50.9	52.4	49.4	52.5	57.4	57
02:00 to 02:15	45.6	40.6	52.1	38.1	52.2	52.7	52.8
02:15 to 02:30	50.4	47	37.8	48.6	42.3	44.6	53.2
02:30 to 02:45	48.9	40.1	Wind/Rain	48.2	47.9	55.1	Wind/Rain
02:45 to 03:00	50.2	45.5	48.8	50.4	42.7	53.1	53.5
03:00 to 03:15	51.4	40.2	43.9	50.5	52.7	53.8	54.7
03:15 to 03:30	46.5	39.9	51.4	47.7	52.5	49.8	49.4
03:30 to 03:45	51	52.9	41.3	51.2	52.9	49.2	Wind/Rain
03:45 to 04:00	50.5	48.4	53.2	52.1	53.5	53.3	Wind/Rain
04:00 to 04:15	53.5	58.1	Wind/Rain	54.7	57.5	56.1	Wind/Rain
04:15 to 04:30	Wind/Rain	54.5	55	52.9	54.6	56.4	Wind/Rain
04:30 to 04:45	54.5	57.1	56.9	59.1	60	52.6	Wind/Rain
04:45 to 05:00	53.7	56.9	58.8	59.3	60.8	58.6	52.4
05:00 to 05:15	56.1	59.1	57.5	55.4	58.9	58.1	53.8
05:15 to 05:30	56.2	59.9	59	60.2	62.1	59	54.2
05:30 to 05:45	56.4	60.3	Wind/Rain	62.6	63	61.6	57.3
05:45 to 06:00	61.3	61.7	62.1	Wind/Rain	65.7	63	60.6
06:00 to 06:15	58.1	64.3	61.9	62.5	64.2	60	59.1
06:15 to 06:30	60.5	63.6	63.4	64.9	66.5	63.2	Wind/Rain
06:30 to 06:45	61.6	65.4	62.9	65.7	66.7	65.4	Wind/Rain
06:45 to 07:00	62.3	Wind/Rain	64.7	66.7	67.3	64.2	Wind/Rain
07:00 to 07:15	62.8	66.5	65.9	65.8	69.3	64.8	Wind/Rain
07:15 to 07:30	63.1	66.3	66.2	68.2	70.4	66.7	64
07:30 to 07:45	63.2	67.7	Wind/Rain	68.8	71.9	67.1	Wind/Rain
07:45 to 08:00	64.3	68.7	68.4	71	72.8	67.4	63.7
08:00 to 08:15	63.6	70.1	69.6	71.9	72.4	67.1	Wind/Rain
08:15 to 08:30	64.9	70.4	Wind/Rain	72.9	Wind/Rain	67.5	Wind/Rain
08:30 to 08:45	64.7	70.8	Wind/Rain	72.7	Wind/Rain	68.8	67.4
08:45 to 09:00	66.3	71.2	Wind/Rain	72.3	Wind/Rain	68.5	66
09:00 to 09:15	66.7	69.9	68.2	73.6	Wind/Rain	67.6	65.9
09:15 to 09:30	66.7	68	ND	70.8	69.4	67.5	Wind/Rain
09:30 to 09:45	66.8	68	ND	70	70.1	69.2	Wind/Rain
09:45 to 10:00	Wind/Rain	67.5	ND	71.1	69.8	69.1	Wind/Rain
10:00 to 10:15	Wind/Rain	68.1	ND	69.7	Wind/Rain	68.6	Wind/Rain
10:15 to 10:30	Wind/Rain	Wind/Rain	Wind/Rain	70	Wind/Rain	69.3	Wind/Rain
10:30 to 10:45	Wind/Rain	68.4	Wind/Rain	70	Wind/Rain	68.8	Wind/Rain
10:45 to 11:00	68.4	Wind/Rain	Wind/Rain	Wind/Rain	Wind/Rain	69.3	Wind/Rain
11:00 to 11:15	Wind/Rain	Wind/Rain	Wind/Rain	70.6	Wind/Rain	70.3	Wind/Rain
11:15 to 11:30	Wind/Rain	Wind/Rain	Wind/Rain	70.4	Wind/Rain	69.1	Wind/Rain
11:30 to 11:45	68	Wind/Rain	Wind/Rain	70.4	Wind/Rain	73.7	Wind/Rain
11:45 to 12:00	67.9	Wind/Rain	69.7	70	Wind/Rain	68.8	Wind/Rain
12:00 to 12:15	67.7	Wind/Rain	69.9	70.6	Wind/Rain	69	Wind/Rain
12:15 to 12:30	67.4	Wind/Rain	69.5	70.1	Wind/Rain	69	Wind/Rain
12:30 to 12:45	Wind/Rain	Wind/Rain	69.6	70.5	Wind/Rain	69	Wind/Rain
12:45 to 13:00	Wind/Rain	Wind/Rain	Wind/Rain	70.9	Wind/Rain	68.8	Wind/Rain
13:00 to 13:15	Wind/Rain	Wind/Rain	Wind/Rain	70.9	Wind/Rain	68.3	Wind/Rain
13:15 to 13:30	Wind/Rain	Wind/Rain	Wind/Rain	70.3	Wind/Rain	68.5	68.5
13:30 to 13:45	66.9	Wind/Rain	Wind/Rain	72.2	Wind/Rain	67.8	Wind/Rain
13:45 to 14:00	67.6	Wind/Rain	Wind/Rain	68.8	Wind/Rain	68.1	Wind/Rain
14:00 to 14:15	Wind/Rain	Wind/Rain	Wind/Rain	Wind/Rain	Wind/Rain	68.8	Wind/Rain
14:15 to 14:30	Wind/Rain	Wind/Rain	Wind/Rain	71.8	70.7	67.6	Wind/Rain
14:30 to 14:45	Wind/Rain	Wind/Rain	Wind/Rain	Wind/Rain	Wind/Rain	67.9	Wind/Rain
14:45 to 15:00	Wind/Rain	Wind/Rain	71.3	Wind/Rain	Wind/Rain	68.3	Wind/Rain
15:00 to 15:15	67.2	Wind/Rain	71.5	Wind/Rain	71.2	68.5	65.7
15:15 to 15:30	67.5	Wind/Rain	70.8	71.3	71.9	68.2	65.9
15:30 to 15:45	68	Wind/Rain	70.9	71.6	70.9	68.2	66.5
15:45 to 16:00	Wind/Rain	70.3	70.1	Wind/Rain	70.2	68.2	66
16:00 to 16:15	67.1	69.9	Wind/Rain	70.8	71	68.2	66.5
16:15 to 16:30	67.1	Wind/Rain	Wind/Rain	Wind/Rain	69.8	67.9	65.7
16:30 to 16:45	67.3	Wind/Rain	Wind/Rain	69.6	69.3	68.4	66.9
16:45 to 17:00	67.1	Wind/Rain	69.8	69.6	70.2	68.2	66.3
17:00 to 17:15	66.1	Wind/Rain	69.5	69.8	70	67.7	65.9
17:15 to 17:30	66.1	68.4	Wind/Rain	69.7	69.1	67.2	66.6
17:30 to 17:45	66.5	68.2	Wind/Rain	68.6	68.9	67.3	64.8
17:45 to 18:00	65.9	68.3	67.4	68.5	68.7	65.8	65.5
18:00 to 18:15	63.8	66.6	67	67	67.7	66	64.8
18:15 to 18:30	63.7	67	66.9	66.9	67.5	66.3	63.4
18:30 to 18:45	Wind/Rain	67	65.1	65.9	66.5	65.3	63.4
18:45 to 19:00	Wind/Rain	64.8	63.4	65.6	65.8	65.3	62.1
19:00 to 19:15	Wind/Rain	64	Wind/Rain	64.4	64	63.7	61.7
19:15 to 19:30	61.9	62.7	62.5	62.3	65.8	63.9	60
19:30 to 19:45	62.1	62.4	62.1	63.8	64.7	64.2	62.9
19:45 to 20:00	59.6	61.4	63.5	62.8	62.1	64.4	61.1
20:00 to 20:15	59.5	Wind/Rain	63.9	63.4	64.6	63.7	61.6
20:15 to 20:30	59.6	61.3	63.2	62.1	62.3	62.9	62.5
20:30 to 20:45	59.1	Wind/Rain	62.1	62.9	63.1	64.6	60.4
20:45 to 21:00	58.7	61.3	Wind/Rain	60.5	63.9	62.4	Wind/Rain
21:00 to 21:15	57.8	Wind/Rain	Wind/Rain	Wind/Rain	68.3	63.1	58.8
21:15 to 21:30	58.4	Wind/Rain	Wind/Rain	61.9	63.1	62.3	Wind/Rain
21:30 to 21:45	56.6	58	Wind/Rain	60.7	63.2	63.1	60.6
21:45 to 22:00	57.9	58.9	62.5	60	63.1	62.7	52.2
22:00 to 22:15	56.7	56.9	58.4	60.9	61.1	62.4	59.2
22:15 to 22:30	58.1	58.1	Wind/Rain	60.5	60.8	60.4	54.9
22:30 to 22:45	53.9	54.2	55.8	57.9	62	61	58
22:45 to 23:00	54.8	55	Wind/Rain	56.8	61.1	60.4	56.2
23:00 to 23:15	53.7	57.6	53	56.7	59.4	59.6	51.3
23:15 to 23:30	50.6	56.6	62	52.9	60.2	58.3	54.1
23:30 to 23:45	54.6	51.4	Wind/Rain	56.2	59.3	58.9	55.8
23:45 to 00:00	49.4	55.4	Wind/Rain	54	57.8	58.1	Wind/Rain

001 Adjacent to carpark – NGARA2

001 - Adjacent Car

	Mon	Tue	Wed	Thu	Fri	Sat	Sun
	15/06/2020	16/06/2020	17/06/2020	18/06/2020	19/06/2020	20/06/2020	21/06/2020
00:00 to 00:15	52	55.4	49.4	51.5	51.6	Wind/Rain	59.1
00:15 to 00:30	47	53.1	55.1	52.9	56.8		60.4
00:30 to 00:45	53.7	52.1	53	58.7	47.2	57.6	56.8
00:45 to 01:00	43.9	51.3	48.2	54.8	53.8	54	56.9
01:00 to 01:15	41.4	47	50.3	56.2	53.5	56.6	55.4
01:15 to 01:30	49.5	46.2	53.7	54.8	49.5	52.6	55.3
01:30 to 01:45	53.5	52.5	52.7	52.1	55.6	55.4	54.1
01:45 to 02:00	49.5	53.8	47.5	50.5	50.9	56.3	57.4
02:00 to 02:15	52.1	49.5	49.5	51.5	Wind/Rain	40.4	56.2
02:15 to 02:30	41.9	49	55.5	43.8	53.7	53	51.1
02:30 to 02:45	51.6	51.1	49.2	50.7	41.9	56	56.2
02:45 to 03:00	46.8	50.7	50.6	44.3	43	55.9	53
03:00 to 03:15	51.9	46.5	52.6	48	52.1	56	57.6
03:15 to 03:30	53.9	55	51.7	53.9	54	51	46.4
03:30 to 03:45	54.6	52.9	54.8	53.7	Wind/Rain	54.3	53.1
03:45 to 04:00	58.6	56.8	54.6	53.3	57.5	54	52.6
04:00 to 04:15	58	57.4	57.1	51.8	54.5	53.8	53.4
04:15 to 04:30	57.2	58.7	57	60.3	60.1	Wind/Rain	57.4
04:30 to 04:45	60.9	58.3	60.6	59	62.3	56.7	54.9
04:45 to 05:00	61	60.8	60.7	61.9	60.5	57.8	58.6
05:00 to 05:15	60.4	59.9	59	59.3	Wind/Rain	Wind/Rain	55.4
05:15 to 05:30	62.5	62.1	63	62.1	63.3	60.4	59.1
05:30 to 05:45	63.9	64.6	62.5	63.8	65.4	62.1	59.4
05:45 to 06:00	63.4	64.6	65.1	65.1	Wind/Rain	63.5	61
06:00 to 06:15	64.5	65.8	65.1	65.3	65.7	62	60.9
06:15 to 06:30	65.1	65.6	64.8	66	Wind/Rain	62.6	59.1
06:30 to 06:45	66.6	67.7	Wind/Rain	67	67.6	Wind/Rain	62.1
06:45 to 07:00	68	69.8	68.3	68.5	68.3	64.6	63.1
07:00 to 07:15	69.4	70.9	68.6	68.5	68.4	65.5	62.8
07:15 to 07:30	69.9	71.5	68.9	69.3	69.9	67.1	65.2
07:30 to 07:45	70.2	71.9	71	70.5	70.3	67.3	65.9
07:45 to 08:00	71.3	72.3	71.7	71.1	72.4	67.1	65.6
08:00 to 08:15	71.1	72.4	71.9	71.1	72.9	67.9	63.9
08:15 to 08:30	72.6	72.7	72.2	72.2	Wind/Rain	67.7	67.1
08:30 to 08:45	72.5	72.3	71.7	72.2	Wind/Rain	68.4	67.2
08:45 to 09:00	71.3	77	71.1	71.1	71.3	68.9	67
09:00 to 09:15	70.2	74.3	70.3	69.8	69.8	69.5	67.4
09:15 to 09:30	70	74.1	68.8	70.5	66.1	70.9	67.5
09:30 to 09:45	70.8	Wind/Rain	68.5	69.2	67.6	70.5	67.9
09:45 to 10:00	70.1	Wind/Rain	69.5	Wind/Rain	Wind/Rain	69.1	68.5
10:00 to 10:15	69.1	Wind/Rain	68.1	Wind/Rain	71.3	69.6	68.4
10:15 to 10:30	69.5	Wind/Rain	68	68.9	65.9	69.9	68.5
10:30 to 10:45	70.2	Wind/Rain	68.6	Wind/Rain	66.1	70.1	68.9
10:45 to 11:00	70.1	Wind/Rain	Wind/Rain	Wind/Rain	67.8	70.6	68
11:00 to 11:15	68.8	Wind/Rain	Wind/Rain	Wind/Rain	68.9	69.4	69
11:15 to 11:30	Wind/Rain	68.8	69.1	69.6	Wind/Rain	69.5	69
11:30 to 11:45	Wind/Rain	69.3	Wind/Rain	Wind/Rain	71.3	69.7	68.1
11:45 to 12:00	Wind/Rain	Wind/Rain	Wind/Rain	Wind/Rain	71.7	69.6	Wind/Rain
12:00 to 12:15	68.8	Wind/Rain	Wind/Rain	Wind/Rain	Wind/Rain	69.2	68.7
12:15 to 12:30	68.5	Wind/Rain	Wind/Rain	Wind/Rain	Wind/Rain	69	Wind/Rain
12:30 to 12:45	70.6	Wind/Rain	Wind/Rain	Wind/Rain	71.3	69.5	Wind/Rain
12:45 to 13:00	69.9	Wind/Rain	Wind/Rain	Wind/Rain	70.5	68.9	Wind/Rain
13:00 to 13:15	72.6	Wind/Rain	Wind/Rain	Wind/Rain	71.9	68.4	Wind/Rain
13:15 to 13:30	Wind/Rain	Wind/Rain	69.9	Wind/Rain	70.4	69	Wind/Rain
13:30 to 13:45	Wind/Rain	Wind/Rain	Wind/Rain	Wind/Rain	70.9	68.1	Wind/Rain
13:45 to 14:00	Wind/Rain	Wind/Rain	Wind/Rain	Wind/Rain	71.2	71.1	Wind/Rain
14:00 to 14:15	Wind/Rain	Wind/Rain	69.5	Wind/Rain	71.3	68.6	Wind/Rain
14:15 to 14:30	Wind/Rain	Wind/Rain	Wind/Rain	Wind/Rain	Wind/Rain	68.7	Wind/Rain
14:30 to 14:45	Wind/Rain	Wind/Rain	Wind/Rain	Wind/Rain	72	68.7	Wind/Rain
14:45 to 15:00	Wind/Rain	Wind/Rain	Wind/Rain	Wind/Rain	71.4	68.5	Wind/Rain
15:00 to 15:15	Wind/Rain	71.6	Wind/Rain	Wind/Rain	72	68.6	Wind/Rain
15:15 to 15:30	Wind/Rain	Wind/Rain	Wind/Rain	Wind/Rain	71.1	69.1	Wind/Rain
15:30 to 15:45	Wind/Rain	Wind/Rain	Wind/Rain	Wind/Rain	71.6	69.5	Wind/Rain
15:45 to 16:00	72.3	72.1	Wind/Rain	Wind/Rain	70.8	68.7	Wind/Rain
16:00 to 16:15	Wind/Rain	71.7	Wind/Rain	Wind/Rain	70.2	67.8	Wind/Rain
16:15 to 16:30	69.8	70.8	Wind/Rain	Wind/Rain	70.6	68.5	Wind/Rain
16:30 to 16:45	69.6	69.7	Wind/Rain	Wind/Rain	69.5	68.8	Wind/Rain
16:45 to 17:00	69.7	69.3	70.4	Wind/Rain	69.8	68.3	Wind/Rain
17:00 to 17:15	69.8	69.6	69.6	Wind/Rain	70.5	68	Wind/Rain
17:15 to 17:30	69.1	68.6	70.1	Wind/Rain	70	68.2	Wind/Rain
17:30 to 17:45	68.8	68.7	69.1	Wind/Rain	70.3	67.4	Wind/Rain
17:45 to 18:00	67.8	67.8	67.1	Wind/Rain	68.8	67.3	Wind/Rain
18:00 to 18:15	66.4	67.5	67.2	Wind/Rain	67.4	66	Wind/Rain
18:15 to 18:30	66.6	66.7	67.4	Wind/Rain	67.3	65.6	63.9
18:30 to 18:45	65.6	66.2	65.9	Wind/Rain	65.7	67.1	64.1
18:45 to 19:00	64	64.1	Wind/Rain	Wind/Rain	66.4	66	62.4
19:00 to 19:15	64.4	63.4	64.4	Wind/Rain	66	65.4	61.4
19:15 to 19:30	63.1	62.9	64.7	64.8	65.6	64.3	63.6
19:30 to 19:45	63.4	62.7	63.5	64.2	64.9	64.5	63.4
19:45 to 20:00	62.3	63.9	63	Wind/Rain	64.7	63.4	63.5
20:00 to 20:15	63	63.3	62.5	Wind/Rain	64	63.1	63.2
20:15 to 20:30	61.9	62.7	62	63.6	64	63.9	62.4
20:30 to 20:45	60.8	60.9	62.5	64.9	63.1	64.5	60.7
20:45 to 21:00	58.9	61.8	62.2	61.7	Wind/Rain	63	60.4
21:00 to 21:15	60.5	59.8	60.5	62.5	Wind/Rain	63.4	61.2
21:15 to 21:30	58.8	61.1	61.2	Wind/Rain	Wind/Rain	63.5	59.9
21:30 to 21:45	60.3	61.9	61.9	60.3	63.4	62.7	Wind/Rain
21:45 to 22:00	59	56.9	62.4	60.4	63.4	63.5	Wind/Rain
22:00 to 22:15	56.6	57.8	59.6	Wind/Rain	62	63	Wind/Rain
22:15 to 22:30	57.6	59.7	60.8	58.4	61.4	61.7	58.1
22:30 to 22:45	57.8	58.5	68	57.5	61.9	62.9	57.4
22:45 to 23:00	57.9	56.3	54.7	58.6	61.6	60.9	56.9
23:00 to 23:15	50.5	56.3	58	58.1	59.7	60.1	52.4
23:15 to 23:30	55.3	55.1	56.6	55.7	58.2	59.6	53.3
23:30 to 23:45	58.3	54.4	52.6	57.6	57.8	60.1	54.7
23:45 to 00:00	57.4	53	53.6	56.3	60.5	59.3	53.4

001 Adjacent to carpark – NGARA2

001 - Adjacent Car

	Mon	Tue	Wed	Thu	Fri	Sat
	22/06/2020	23/06/2020	24/06/2020	25/06/2020	26/06/2020	27/06/2020
00:00 to 00:15	52.1	52.6	39.4	53.2	54.6	58.1
00:15 to 00:30	55.2	54.9	53.8	56.1	50.6	57.8
00:30 to 00:45	59.6	46.6	56.2	36.3	53.6	56.4
00:45 to 01:00	41.7	35.2	52.3	37.5	45.5	55.2
01:00 to 01:15	54.5	45.6	52.7	36.7	51.4	56
01:15 to 01:30	37.8	44.2	47.5	48.4	39.2	56
01:30 to 01:45	49.6	49.7	53	48.7	49.5	52.4
01:45 to 02:00	48.5	37.4	48.9	51.5	50.7	51
02:00 to 02:15	52.9	36.5	50.6	42.3	45.6	55.1
02:15 to 02:30	53.8	36	47.5	47.2	53.7	53.4
02:30 to 02:45	51.3	53.4	49.1	39.1	45.1	54.7
02:45 to 03:00	55.7	44.3	51.9	51.9	50.4	52.4
03:00 to 03:15	50.7	36.4	40.1	51.6	49	53.1
03:15 to 03:30	46.5	58.3	52.4	51.6	49.9	52.8
03:30 to 03:45	54.8	55.3	51.3	49.5	53.4	50.1
03:45 to 04:00	57.6	55.8	57.6	55.7	52.7	54.3
04:00 to 04:15	56.6	55.5	57.4	55.6	58.4	55.3
04:15 to 04:30	60.5	57.3	58.8	57.3	56.7	55.1
04:30 to 04:45	58.3	58.2	58.9	59.8	58.9	55.8
04:45 to 05:00	60.3	59.6	59.7	59.1	59.1	56.2
05:00 to 05:15	62.5	59.5	60.1	62.1	Wind/Rain	58.7
05:15 to 05:30	63.6	63.4	62.8	62.5	62.5	60.4
05:30 to 05:45	64.1	63.6	63.4	64.5	63.7	62.6
05:45 to 06:00	63.9	63.8	63.8	63.3	65.1	63.1
06:00 to 06:15	64.5	64.9	64.9	64.2	65.2	62.1
06:15 to 06:30	65.6	64.3	64.9	65.6	65.9	64
06:30 to 06:45	66.8	65.4	66.2	65.9	66.7	65.6
06:45 to 07:00	67.1	67.5	67.2	67.5	67	66.3
07:00 to 07:15	67.9	68	68	67.6	67.7	66.1
07:15 to 07:30	69.5	69.5	69.5	68.5	69.4	67.6
07:30 to 07:45	70.1	70.2	69	69.7	69.2	67
07:45 to 08:00	71.4	71.7	70.8	71.4	71.6	67.7
08:00 to 08:15	71.8	70.7	71	71.3	70.8	67.9
08:15 to 08:30	72	71.9	72.3	72.5	72.1	67.9
08:30 to 08:45	71.6	71.3	72.9	71.6	71.5	68.7
08:45 to 09:00	70.8	70.5	71.4	70.3	71.1	68.8
09:00 to 09:15	69.8	69.3	69.6	70.2	69.9	68.5
09:15 to 09:30	69.1	68.8	70.2	70.2	70.3	69.3
09:30 to 09:45	68.9	68.2	70.1	70	70	69.4
09:45 to 10:00	68.5	68.6	69.7	68.8	70.3	69.3
10:00 to 10:15	68.7	69.4	69	68.1	70.6	69.8
10:15 to 10:30	69.6	69.6	69.6	69.6	70.5	69.9
10:30 to 10:45	69.5	69	69.3	69.2	Wind/Rain	69.1
10:45 to 11:00	68.4	68.4	69.4	70.7	Wind/Rain	Wind/Rain
11:00 to 11:15	69	68.1	69.8	69.1	Wind/Rain	Wind/Rain
11:15 to 11:30	69	69.4	70.3	69.3	69.2	69.7
11:30 to 11:45	68.6	68.7	70.4	69.7	69.1	69.9
11:45 to 12:00	Wind/Rain	69.1	70.8	69.4	71.9	69.8
12:00 to 12:15	68.6	69.3	69.2	69.1	69.9	69.7
12:15 to 12:30	69	69.2	69.8	69.7	69.8	68.9
12:30 to 12:45	69	68.9	68.3	69.1	70.6	Wind/Rain
12:45 to 13:00	68.6	68.7	70	Wind/Rain	71.5	Wind/Rain
13:00 to 13:15	68.6	68.5	68.3	68.9	70	69.7
13:15 to 13:30	69.1	69.3	69.2	69.2	69.8	Wind/Rain
13:30 to 13:45	68.1	Wind/Rain	69.5	69.5	70	Wind/Rain
13:45 to 14:00	69	68.6	69.5	68.8	69.3	Wind/Rain
14:00 to 14:15	68.8	68.8	69.4	69.6	70.7	Wind/Rain
14:15 to 14:30	69.3	69.4	68.7	69.4	70.3	Wind/Rain
14:30 to 14:45	71	70.7	69.2	70.8	75.8	Wind/Rain
14:45 to 15:00	70.2	69.8	70.2	70.1	70.5	Wind/Rain
15:00 to 15:15	70.5	71.4	71.2	71.6	72.4	Wind/Rain
15:15 to 15:30	69.7	70.9	70.8	Wind/Rain	71.4	69
15:30 to 15:45	70.2	71.1	69.8	Wind/Rain	71.1	68.4
15:45 to 16:00	69.8	70.3	70.4	Wind/Rain	70.3	68.8
16:00 to 16:15	69.4	70.3	69.8	70.6	70.1	68.2
16:15 to 16:30	70	69.8	69.7	70	70.1	68.8
16:30 to 16:45	69.5	69.1	68.7	69.9	70.2	69.2
16:45 to 17:00	69.4	69.5	69.1	70.2	69.1	68.7
17:00 to 17:15	69	68.9	68.9	68.7	69.9	68.5
17:15 to 17:30	68.6	68.8	68.7	69.2	69.6	68.4
17:30 to 17:45	67.9	68.6	68.3	68.7	69	67.7
17:45 to 18:00	67.4	67.5	68.4	68.2	69	66.4
18:00 to 18:15	66	66.3	66.8	67.9	68.4	66.5
18:15 to 18:30	66.9	65.9	66.6	66.3	67.9	66
18:30 to 18:45	64.3	66	65.4	66	67	66
18:45 to 19:00	64.1	64	65.8	65.7	66.9	65.2
19:00 to 19:15	63.3	64.5	64.9	65	66.2	64.6
19:15 to 19:30	62.6	64	63.4	65.6	64.4	63.6
19:30 to 19:45	62.6	62.7	64	64	64.9	63.6
19:45 to 20:00	62.9	61.6	63.8	63.4	64.2	63.4
20:00 to 20:15	62.5	61.4	64.7	64.2	65.2	65
20:15 to 20:30	62.3	63.2	63.6	62.5	64	63.6
20:30 to 20:45	62.3	62.5	61.2	64.5	63.2	64.1
20:45 to 21:00	59.5	61.3	61.1	62.1	64.8	62.6
21:00 to 21:15	59.9	62.4	60.9	63.5	63.6	62.5
21:15 to 21:30	61.9	61.3	60.4	59.6	62.6	62.2
21:30 to 21:45	60.2	60.3	61.2	61.6	61.6	61.9
21:45 to 22:00	56.9	54.8	56.9	58	62.8	60.9
22:00 to 22:15	56.1	56.7	58.1	59.4	62.7	61.8
22:15 to 22:30	57	55.3	57.2	61.1	62.3	60.4
22:30 to 22:45	52.6	58.4	58	56.3	62.1	62.3
22:45 to 23:00	56.7	55.4	58.2	57.9	60	60.8
23:00 to 23:15	54	52.1	58.4	58.3	58	58.7
23:15 to 23:30	54.7	58.2	58.3	59	60	61.2
23:30 to 23:45	56	53.6	53.5	54.8	57.4	58.6
23:45 to 00:00	53.1	52.9	55.5	56.9	56.4	62.1

001 Adjacent to carpark – NGARA2

001 - Adjacent Car

H	Sun	Mon	Tue
	28/06/2020	29/06/2020	30/06/2020
00:00 to 00:15	59.8	53.8	52.6
00:15 to 00:30	58.6	54.6	51.2
00:30 to 00:45	54.3	54.3	54.3
00:45 to 01:00	57.9	54	50.4
01:00 to 01:15	53.8	52.8	51.4
01:15 to 01:30	52.1	56.8	42.9
01:30 to 01:45	56.6	50.8	51.1
01:45 to 02:00	57.2	48.9	47.7
02:00 to 02:15	55.8	46.1	52.7
02:15 to 02:30	Wind/Rain	40.2	43.4
02:30 to 02:45	48.4	49.9	49.6
02:45 to 03:00	47.1	50.5	53.7
03:00 to 03:15	57.8	50.5	43.5
03:15 to 03:30	51.3	55.6	47.9
03:30 to 03:45	58.1	50.8	54.5
03:45 to 04:00	54.1	54.6	55.9
04:00 to 04:15	51.8	57.4	55.8
04:15 to 04:30	56	62.4	58.1
04:30 to 04:45	56.5	60	59.1
04:45 to 05:00	54.4	61.8	60.7
05:00 to 05:15	56.7	59.6	59.9
05:15 to 05:30	57.7	63.2	62.2
05:30 to 05:45	61.5	63	63.9
05:45 to 06:00	59.2	64.2	64.2
06:00 to 06:15	60.2	63.6	64.6
06:15 to 06:30	60.5	65.4	65.9
06:30 to 06:45	62.6	66.7	66.6
06:45 to 07:00	62.7	67.6	67.9
07:00 to 07:15	60.8	68.8	69
07:15 to 07:30	64.7	69.7	69.4
07:30 to 07:45	65.2	71.2	70.1
07:45 to 08:00	65	71.9	72.5
08:00 to 08:15	65.4	72.4	72.5
08:15 to 08:30	66.1	Wind/Rain	73.3
08:30 to 08:45	67.9	Wind/Rain	74
08:45 to 09:00	Wind/Rain	71.7	73
09:00 to 09:15	Wind/Rain	70.1	72.4
09:15 to 09:30	68.9	69.8	71.2
09:30 to 09:45	Wind/Rain	69.8	70.2
09:45 to 10:00	69.2	70.9	70.2
10:00 to 10:15	68.8	Wind/Rain	69.2
10:15 to 10:30	68.8	69.9	70.2
10:30 to 10:45	69.5	Wind/Rain	71.7
10:45 to 11:00	70.1	Wind/Rain	71.1
11:00 to 11:15	71.6	Wind/Rain	69.9
11:15 to 11:30	70.6	Wind/Rain	69.5
11:30 to 11:45	69.4	Wind/Rain	69.1
11:45 to 12:00	Wind/Rain	71.2	69.7
12:00 to 12:15	Wind/Rain	70.3	69.5
12:15 to 12:30	Wind/Rain	70.1	69.9
12:30 to 12:45	69.2	70.7	70.5
12:45 to 13:00	70.1	Wind/Rain	70.9
13:00 to 13:15	69.6	69.5	69.6
13:15 to 13:30	68.4	Wind/Rain	Wind/Rain
13:30 to 13:45	68.2	Wind/Rain	Wind/Rain
13:45 to 14:00	69.2	Wind/Rain	69.6
14:00 to 14:15	Wind/Rain	Wind/Rain	70.6
14:15 to 14:30	68.7	Wind/Rain	69.7
14:30 to 14:45	69	Wind/Rain	70.7
14:45 to 15:00	69.8	Wind/Rain	70.5
15:00 to 15:15	68.8	Wind/Rain	77.2
15:15 to 15:30	70.4	Wind/Rain	72.3
15:30 to 15:45	70	Wind/Rain	72.1
15:45 to 16:00	68.6	Wind/Rain	71.5
16:00 to 16:15	Wind/Rain	Wind/Rain	70.2
16:15 to 16:30	67.6	Wind/Rain	70.2
16:30 to 16:45	67.4	70.1	70.1
16:45 to 17:00	Wind/Rain	Wind/Rain	69.4
17:00 to 17:15	67	Wind/Rain	69.4
17:15 to 17:30	66.7	Wind/Rain	69.7
17:30 to 17:45	65.3	68.4	69.5
17:45 to 18:00	64.9	68	68.2
18:00 to 18:15	65.8	67.1	68.2
18:15 to 18:30	63.2	66.1	67.4
18:30 to 18:45	64.5	64.8	66.7
18:45 to 19:00	62.6	62.9	64.8
19:00 to 19:15	60.9	63.8	64.6
19:15 to 19:30	61.5	63.7	64.4
19:30 to 19:45	61.7	63	63.3
19:45 to 20:00	63.3	63	63.6
20:00 to 20:15	62.2	62.4	64
20:15 to 20:30	61.1	62.8	63.1
20:30 to 20:45	60.4	63.2	64.1
20:45 to 21:00	61.2	61.9	62.7
21:00 to 21:15	61	61.6	61.9
21:15 to 21:30	60.5	59.9	61.3
21:30 to 21:45	58.9	60.8	61.8
21:45 to 22:00	57.4	60.2	57.5
22:00 to 22:15	58.2	58.4	59.2
22:15 to 22:30	58.7	58.5	58
22:30 to 22:45	56.9	52.6	58.2
22:45 to 23:00	58.7	56.6	55.8
23:00 to 23:15	55.9	57.2	57.3
23:15 to 23:30	57.1	56.4	54
23:30 to 23:45	51.3	53.3	58
23:45 to 00:00	54	49.6	57

002 Central location –NGARA1

002 - Central Location

Limit Standard= Limit outside Standard=	Limit 168m= 73 High Noise 168m= 75		Limit 56m= 79 High noise 56= 81		Limit 18m= 85 High Noise 18m= 87		Limit 8m=
	Mon	Tue	Wed	Thu	Fri	Sat	Sun
	1/06/2020	2/06/2020	3/06/2020	4/06/2020	5/06/2020	6/06/2020	7/06/2020
00:00 to 00:15	51.1	51.6	46.4	47.8	50.3	55.6	55.6
00:15 to 00:30	44.8	51.2	37.8	45.8	47.4	56.6	53.8
00:30 to 00:45	51.2	46	38.2	46.6	48.4	52.6	52.1
00:45 to 01:00	Wind/Rain	40.9	48.2	50.5	42.3	52.4	52.6
01:00 to 01:15	46.9	44.5	50.5	43.3	49.7	51.5	57
01:15 to 01:30	42.5	49.5	50.3	49.6	50.3	54.6	52
01:30 to 01:45	45.2	49.9	44.9	50	45	52	51.8
01:45 to 02:00	48.5	43.5	51.6	49.1	49.9	48.7	52.9
02:00 to 02:15	47.9	41.6	44.9	46.4	40.9	49.7	52.3
02:15 to 02:30	47.8	40	37.6	46.8	50.9	52.2	55.7
02:30 to 02:45	48.7	47.1	43.1	48.6	46.1	48.3	53.5
02:45 to 03:00	45.5	45.7	37.2	44.3	47.2	48.4	51.2
03:00 to 03:15	51.6	51	45.5	48.9	49.2	49.4	51.7
03:15 to 03:30	49.4	40.7	50.1	48.5	49.5	52	50.4
03:30 to 03:45	49.7	44.5	47.6	46.7	53.1	46.6	51.5
03:45 to 04:00	45.5	47.4	52.6	51.1	51.2	47.9	50.9
04:00 to 04:15	51.2	50	38.8	51.7	50.4	50	50.6
04:15 to 04:30	49.7	53	52.6	53.5	55.3	52.8	50.8
04:30 to 04:45	53.7	54.6	56.2	55.9	55.8	54.6	51
04:45 to 05:00	55.9	58.1	57.6	55.6	56.4	53.8	52.1
05:00 to 05:15	55.5	56.8	55.2	56.5	55.4	54.3	52.2
05:15 to 05:30	59.1	57.8	59.7	56.6	58.3	55.8	54.3
05:30 to 05:45	58	59.9	60.4	60.3	61.8	59.2	56.3
05:45 to 06:00	61.1	61.5	60.9	61.4	61.2	59.8	56.5
06:00 to 06:15	60.7	62	62.8	60.3	62.2	59.4	57.1
06:15 to 06:30	62	67.3	68.3	Wind/Rain	64.1	59.8	63.1
06:30 to 06:45	62.8	67.5	68.4	Wind/Rain	63.8	61.2	60.6
06:45 to 07:00	62.8	66.4	68.9	Wind/Rain	65	62.6	61
07:00 to 07:15	64.6	66.8	67.5	Wind/Rain	61.4	62.2	60.9
07:15 to 07:30	64.9	65.5	65.4	Wind/Rain	65.2	63.5	61.3
07:30 to 07:45	64.6	67	66.2	Wind/Rain	65.9	63.8	62.8
07:45 to 08:00	66.8	68.5	68.2	Wind/Rain	67	63	63.6
08:00 to 08:15	68.6	68.7	68.5	Wind/Rain	67.4	59.8	62.6
08:15 to 08:30	68.8	68.9	68.8	Wind/Rain	68.1	63.5	63.1
08:30 to 08:45	69	69.5	69	Wind/Rain	68.1	64.3	63.8
08:45 to 09:00	69	68.6	68.2	Wind/Rain	Wind/Rain	64.9	64.5
09:00 to 09:15	67.9	66.7	67.2	Wind/Rain	Wind/Rain	64.2	64.7
09:15 to 09:30	67.5	Wind/Rain	65.9	Wind/Rain	67.5	64.9	64.3
09:30 to 09:45	65.5	Wind/Rain	66	Wind/Rain	66.1	65.3	64.4
09:45 to 10:00	66.1	66.9	66.2	Wind/Rain	66.7	64.7	64.9
10:00 to 10:15	Wind/Rain	67.7	64.3	Wind/Rain	66.2	65	64.9
10:15 to 10:30	Wind/Rain	67.9	64.6	Wind/Rain	Wind/Rain	65.8	64.6
10:30 to 10:45	Wind/Rain	66.2	65.3	Wind/Rain	66.7	65.8	65.8
10:45 to 11:00	66.6	67.4	66.3	Wind/Rain	Wind/Rain	65.3	65
11:00 to 11:15	65.9	Wind/Rain	65.9	65.7	67.3	65.4	64.5
11:15 to 11:30	69	65	65.6	Wind/Rain	66.1	65	65
11:30 to 11:45	Wind/Rain	65.7	Wind/Rain	Wind/Rain	66.9	65.7	64.9
11:45 to 12:00	Wind/Rain	65	65.6	Wind/Rain	Wind/Rain	65.8	65.2
12:00 to 12:15	Wind/Rain	Wind/Rain	65.4	Wind/Rain	Wind/Rain	65.6	64.9
12:15 to 12:30	Wind/Rain	67.2	65.9	Wind/Rain	Wind/Rain	Wind/Rain	64.7
12:30 to 12:45	Wind/Rain	66.8	64.6	Wind/Rain	Wind/Rain	Wind/Rain	64.5
12:45 to 13:00	66	67	66.4	Wind/Rain	65.6	Wind/Rain	64.4
13:00 to 13:15	66	Wind/Rain	64.8	Wind/Rain	Wind/Rain	Wind/Rain	64.4
13:15 to 13:30	Wind/Rain	65.2	65.7	Wind/Rain	Wind/Rain	Wind/Rain	65
13:30 to 13:45	Wind/Rain	66.4	67.6	Wind/Rain	Wind/Rain	Wind/Rain	64.2
13:45 to 14:00	Wind/Rain	65.6	65.6	Wind/Rain	Wind/Rain	Wind/Rain	65.8
14:00 to 14:15	Wind/Rain	66.9	65.8	Wind/Rain	Wind/Rain	Wind/Rain	64.7
14:15 to 14:30	Wind/Rain	66.6	66.6	Wind/Rain	Wind/Rain	Wind/Rain	Wind/Rain
14:30 to 14:45	Wind/Rain	66.7	66.4	Wind/Rain	Wind/Rain	Wind/Rain	Wind/Rain
14:45 to 15:00	Wind/Rain	66.5	67.2	Wind/Rain	64.8	Wind/Rain	Wind/Rain
15:00 to 15:15	Wind/Rain	68.1	67.5	Wind/Rain	Wind/Rain	64.9	64.1
15:15 to 15:30	Wind/Rain	68.3	Wind/Rain	Wind/Rain	Wind/Rain	65.1	Wind/Rain
15:30 to 15:45	Wind/Rain	68.1	Wind/Rain	68.5	Wind/Rain	65.1	64.1
15:45 to 16:00	Wind/Rain	68.1	68.3	Wind/Rain	Wind/Rain	66.3	65.2
16:00 to 16:15	Wind/Rain	67.7	67.9	Wind/Rain	Wind/Rain	64.7	64.6
16:15 to 16:30	Wind/Rain	67.4	Wind/Rain	Wind/Rain	Wind/Rain	65.1	64.2
16:30 to 16:45	Wind/Rain	66.4	67.1	67.1	Wind/Rain	64.8	63
16:45 to 17:00	Wind/Rain	65.5	66.6	66.4	Wind/Rain	64.8	63.8
17:00 to 17:15	Wind/Rain	65.7	65.9	66.6	Wind/Rain	64.8	64.7
17:15 to 17:30	Wind/Rain	65.4	66.1	65.9	66.2	64	Wind/Rain
17:30 to 17:45	Wind/Rain	65.6	66.1	65.4	65.9	63.7	Wind/Rain
17:45 to 18:00	Wind/Rain	64.1	65.4	Wind/Rain	Wind/Rain	64.2	62.3
18:00 to 18:15	63	64.1	64.5	63.7	64.4	62.4	61.9
18:15 to 18:30	62.8	63.2	62.8	63.9	64.2	62.6	61.3
18:30 to 18:45	61.4	61.4	62.4	63.2	62.9	62.2	60.6
18:45 to 19:00	61.2	60.7	61.2	61.6	62.6	61.5	60.5
19:00 to 19:15	60	60.2	60.5	61.8	61.5	60.7	59.1
19:15 to 19:30	59.1	59.6	59	60.7	60.8	60.7	58.2
19:30 to 19:45	58.5	59.7	60.9	59.8	61	60	Wind/Rain
19:45 to 20:00	57.7	58.8	59.4	59.3	60.5	60.2	59.4
20:00 to 20:15	58.1	60.5	59	60.8	60.2	60.6	57.4
20:15 to 20:30	Wind/Rain	59.1	57.2	59.8	59.8	60.5	59.4
20:30 to 20:45	57.5	59.8	59.2	61.3	59.3	59.6	57.7
20:45 to 21:00	56.2	58.1	57.2	59.7	58.2	59.1	59
21:00 to 21:15	55.9	57.7	58.2	60	60.7	58.8	57.9
21:15 to 21:30	55.8	56.8	56.3	57.2	59.8	58.2	58.3
21:30 to 21:45	55.7	54.7	56.4	57	57.6	58.6	57.2
21:45 to 22:00	56.3	58.2	60.7	60.1	59	58.4	55.6
22:00 to 22:15	54.7	56	57.2	57.6	59.5	57	56.4
22:15 to 22:30	54.8	57.4	56.5	55	57.8	56.7	56.8
22:30 to 22:45	53.8	54	54.2	55.6	56.9	59.3	54.9
22:45 to 23:00	55.2	50.2	53.8	53.2	57.5	58.4	51.2
23:00 to 23:15	52.5	54.7	52.5	53.9	56.1	58.1	52.2
23:15 to 23:30	51.4	51.2	52.8	55	56.7	59	51
23:30 to 23:45	53.1	53.7	53.9	52.3	54.5	56.7	49.6
23:45 to 00:00	52.3	45.1	46.6	53.9	57.7	55.4	49.6

002 Central location –NGARA1

002 - Central Local

Limit Standard= 91
Limit outside Standard= 93

	Mon	Tue	Wed	Thu	Fri	Sat	Sun
	8/06/2020	9/06/2020	10/06/2020	11/06/2020	12/06/2020	13/06/2020	14/06/2020
00:00 to 00:15	49.4	51	54.5	47	52.3	54.2	54.3
00:15 to 00:30	49.8	Wind/Rain	Wind/Rain	50.1	51.7	54.8	55.1
00:30 to 00:45	49.5	Wind/Rain	Wind/Rain	42	45.3	53.7	52.4
00:45 to 01:00	49	Wind/Rain	49.8	44	49.6	54.1	55
01:00 to 01:15	46.5	Wind/Rain	Wind/Rain	Wind/Rain	50.9	55.7	Wind/Rain
01:15 to 01:30	48.5	46.9	48.5	Wind/Rain	45.8	49.1	54.6
01:30 to 01:45	49.9	48.4	50	44.7	47.2	47.4	54.6
01:45 to 02:00	43	46.6	50.6	46	48.1	51	53.6
02:00 to 02:15	51	42.5	40.6	48.2	49.3	53.7	52.3
02:15 to 02:30	47.8	46.3	49.6	39	49.7	51.4	51.9
02:30 to 02:45	45	45.5	Wind/Rain	45.3	46.5	44.6	Wind/Rain
02:45 to 03:00	50.3	42.6	45.9	45.7	43.1	46.2	48.9
03:00 to 03:15	48.7	42.3	48.6	46.4	45.7	52.7	49.8
03:15 to 03:30	50.5	48.9	43.4	47.1	49.4	50.8	48.9
03:30 to 03:45	46.9	49.8	50	40.6	43.7	48.2	Wind/Rain
03:45 to 04:00	52.6	55.2	57.4	47.7	50.4	41.7	Wind/Rain
04:00 to 04:15	47.5	53.1	Wind/Rain	48.7	51.5	51.3	Wind/Rain
04:15 to 04:30	Wind/Rain	54.3	55.2	45.3	51.7	51.5	Wind/Rain
04:30 to 04:45	53.7	55.5	56.3	51.1	53.2	50.8	Wind/Rain
04:45 to 05:00	54.5	56.5	54.5	53.1	52.5	53.4	52.2
05:00 to 05:15	53.4	57	56.4	54.2	57.9	51.3	48.7
05:15 to 05:30	55.1	58.7	57	54.7	56.8	54.7	50.2
05:30 to 05:45	58.2	59.7	Wind/Rain	52.6	57.3	55	51
05:45 to 06:00	57.8	62	60.7	Wind/Rain	58.2	56.6	52.3
06:00 to 06:15	58.9	61.9	61.2	58.8	61.2	59	53.6
06:15 to 06:30	59.7	63	62.2	59.1	61.4	58.8	Wind/Rain
06:30 to 06:45	60.1	63.3	63.1	60.9	61.8	57.5	Wind/Rain
06:45 to 07:00	61.9	Wind/Rain	63.5	61.2	62.6	59.7	Wind/Rain
07:00 to 07:15	60.1	64.1	64.4	62.1	66.6	62.3	Wind/Rain
07:15 to 07:30	61.4	65.1	65.9	62.5	65.2	60.6	57
07:30 to 07:45	63.2	66.1	Wind/Rain	65.2	65.3	61.7	Wind/Rain
07:45 to 08:00	63.4	67.7	68.8	64.1	66.6	62.3	61.6
08:00 to 08:15	62.4	67.7	68.4	66.7	67.4	63.7	Wind/Rain
08:15 to 08:30	62.7	67.7	Wind/Rain	68	Wind/Rain	60.8	Wind/Rain
08:30 to 08:45	63.5	68.6	Wind/Rain	69	Wind/Rain	61.3	62
08:45 to 09:00	63.8	67.7	Wind/Rain	69.5	Wind/Rain	63.9	63.1
09:00 to 09:15	63.9	65.9	67.4	68.5	Wind/Rain	64.8	63.5
09:15 to 09:30	64.1	65.6	67	69.4	67.7	63.7	Wind/Rain
09:30 to 09:45	62.8	65.1	65.3	72.5	66.3	63.4	Wind/Rain
09:45 to 10:00	Wind/Rain	65.7	67.8	67.5	66.7	65	Wind/Rain
10:00 to 10:15	Wind/Rain	65.1	66.7	65.6	Wind/Rain	65.2	Wind/Rain
10:15 to 10:30	Wind/Rain	Wind/Rain	Wind/Rain	67.2	Wind/Rain	64.8	Wind/Rain
10:30 to 10:45	Wind/Rain	65.5	Wind/Rain	65.7	Wind/Rain	64.9	Wind/Rain
10:45 to 11:00	65.3	Wind/Rain	Wind/Rain	Wind/Rain	Wind/Rain	64.9	Wind/Rain
11:00 to 11:15	Wind/Rain	Wind/Rain	Wind/Rain	65.9	Wind/Rain	65.2	Wind/Rain
11:15 to 11:30	Wind/Rain	Wind/Rain	Wind/Rain	66.5	Wind/Rain	66.6	Wind/Rain
11:30 to 11:45	65.1	Wind/Rain	Wind/Rain	67.7	Wind/Rain	66.7	Wind/Rain
11:45 to 12:00	64.6	Wind/Rain	78.4	66.1	Wind/Rain	67.6	Wind/Rain
12:00 to 12:15	64.3	Wind/Rain	72.8	66.2	Wind/Rain	64.9	Wind/Rain
12:15 to 12:30	64.8	Wind/Rain	66.1	65.6	Wind/Rain	65.3	Wind/Rain
12:30 to 12:45	Wind/Rain	Wind/Rain	69.8	65.5	Wind/Rain	65.3	Wind/Rain
12:45 to 13:00	Wind/Rain	Wind/Rain	Wind/Rain	66.1	Wind/Rain	64.9	Wind/Rain
13:00 to 13:15	Wind/Rain	Wind/Rain	Wind/Rain	66.4	Wind/Rain	64.8	Wind/Rain
13:15 to 13:30	Wind/Rain	Wind/Rain	Wind/Rain	67	Wind/Rain	64.4	63.1
13:30 to 13:45	64.8	Wind/Rain	Wind/Rain	66.2	Wind/Rain	64.9	Wind/Rain
13:45 to 14:00	65.1	Wind/Rain	Wind/Rain	65.5	Wind/Rain	64.1	Wind/Rain
14:00 to 14:15	Wind/Rain	Wind/Rain	Wind/Rain	Wind/Rain	Wind/Rain	63.9	Wind/Rain
14:15 to 14:30	Wind/Rain	Wind/Rain	Wind/Rain	66.9	66.3	64.6	Wind/Rain
14:30 to 14:45	Wind/Rain	Wind/Rain	Wind/Rain	Wind/Rain	Wind/Rain	63.9	Wind/Rain
14:45 to 15:00	Wind/Rain	Wind/Rain	67	Wind/Rain	Wind/Rain	63.9	Wind/Rain
15:00 to 15:15	64.4	Wind/Rain	68.1	Wind/Rain	68	64.1	63.5
15:15 to 15:30	65.5	Wind/Rain	69.8	67.3	68.1	64	62.1
15:30 to 15:45	64.4	Wind/Rain	69.1	66.6	68.1	64.8	62.4
15:45 to 16:00	Wind/Rain	68	68.8	Wind/Rain	68.1	64.3	62.2
16:00 to 16:15	63.8	67.4	Wind/Rain	69.9	66.5	64.3	63.3
16:15 to 16:30	65.2	Wind/Rain	Wind/Rain	Wind/Rain	66.4	64.3	63.5
16:30 to 16:45	64.2	Wind/Rain	Wind/Rain	66.9	66.3	64.1	62.9
16:45 to 17:00	64.1	Wind/Rain	67	66.2	65.8	64.2	62.9
17:00 to 17:15	64	Wind/Rain	66.9	66.4	66.4	64.2	63.4
17:15 to 17:30	64	65.8	Wind/Rain	66.5	65.9	64	62.4
17:30 to 17:45	64	65.7	Wind/Rain	66.4	65.2	62.8	63.4
17:45 to 18:00	61.6	64.5	65.9	65.6	65.3	63.5	62.7
18:00 to 18:15	61.9	64.6	64	65	64.7	62.6	61.3
18:15 to 18:30	61.6	64.5	64.1	64.1	64.3	61.7	61.7
18:30 to 18:45	Wind/Rain	62.6	63.5	63.2	63.6	62.3	61
18:45 to 19:00	Wind/Rain	61.7	63.3	62	63	62.4	60.3
19:00 to 19:15	Wind/Rain	60.3	Wind/Rain	62.3	62.5	60.7	59.1
19:15 to 19:30	60.1	60.4	59.6	61.5	60	59.7	59.8
19:30 to 19:45	57.3	58	59.1	59.6	61.2	60	55.6
19:45 to 20:00	57.4	59	58.8	59.1	60.8	60.2	58.5
20:00 to 20:15	57.3	Wind/Rain	60.4	60.4	60.7	60.4	59.1
20:15 to 20:30	58.4	58.3	60.1	59.4	59.4	59.5	57.9
20:30 to 20:45	56	Wind/Rain	59.7	58.2	58.9	59.2	58.1
20:45 to 21:00	56.8	58.7	Wind/Rain	60.1	58.9	59.7	Wind/Rain
21:00 to 21:15	55.2	Wind/Rain	Wind/Rain	Wind/Rain	60.4	59.7	57.1
21:15 to 21:30	55.1	Wind/Rain	Wind/Rain	58.4	63.3	58.4	Wind/Rain
21:30 to 21:45	55.1	54.6	Wind/Rain	58.9	57.9	58.9	54
21:45 to 22:00	55.8	54.7	61.7	57.2	59.5	58.3	56.8
22:00 to 22:15	55.9	57.2	62.6	57.1	59.3	58.4	53.6
22:15 to 22:30	52.8	51.7	Wind/Rain	56.4	57.2	59.4	55.3
22:30 to 22:45	50.7	53.6	55.8	58.2	57.3	56.2	54
22:45 to 23:00	54.1	55.2	Wind/Rain	54	58.5	57.9	53.9
23:00 to 23:15	47.2	54.3	51.1	54.1	56.8	55.6	51.4
23:15 to 23:30	51.7	49.3	46.7	53.8	56.6	57.1	50.3
23:30 to 23:45	51	53	Wind/Rain	52.4	57.2	54.6	46.3
23:45 to 00:00	51.3	50.4	Wind/Rain	52	54.3	54.2	Wind/Rain

002 Central location –NGARA1

002 - Central Local

Limit Standard=
Limit outside Standard=

	Mon 15/06/2020	Tue 16/06/2020	Wed 17/06/2020	Thu 18/06/2020	Fri 19/06/2020	Sat 20/06/2020	Sun 21/06/2020
00:00 to 00:15	52.4	53.7	49	51.3	53.4	Wind/Rain	57.4
00:15 to 00:30	48.4	52.9	48.9	49.3	52.9	55.1	53.6
00:30 to 00:45	49.6	49.6	50.1	48.2	51.1	56	57.4
00:45 to 01:00	50	50.2	51.9	51.3	50.9	53.1	54.7
01:00 to 01:15	47.8	49.1	47.8	53.4	50.3	53.8	54.8
01:15 to 01:30	42.5	45.6	47.1	52.2	47.5	51.1	51
01:30 to 01:45	46.6	46	50.4	47.4	50.2	52.9	51.4
01:45 to 02:00	49.2	49.3	48.7	50.1	51.9	51.7	54.1
02:00 to 02:15	49.5	49.9	48.9	50.3	Wind/Rain	49.3	52.2
02:15 to 02:30	50.1	49.3	48.8	46.7	47.3	52.9	51.6
02:30 to 02:45	42.3	47.1	47.2	48.6	52.2	41.6	52.9
02:45 to 03:00	46.3	47.5	52.1	47.8	42.6	54.9	51.8
03:00 to 03:15	48.2	49.1	48.8	44.4	43.4	52.9	51.2
03:15 to 03:30	44	48.3	49.4	44.8	44.2	51.4	50
03:30 to 03:45	51.7	51.2	47.8	46.7	Wind/Rain	50.2	53.2
03:45 to 04:00	48	50.1	49.6	52.2	52.5	48.7	44.4
04:00 to 04:15	54.2	50.6	52.9	49.2	53	52.4	50.5
04:15 to 04:30	55.5	54.9	51.9	49.4	51	Wind/Rain	48.6
04:30 to 04:45	54	54.5	54.3	53.1	53.3	51.7	53.6
04:45 to 05:00	56.9	53.4	55.3	56.3	60	53.1	52.9
05:00 to 05:15	56.4	56.5	58.4	56	Wind/Rain	Wind/Rain	53.4
05:15 to 05:30	57.7	56.8	55.5	57.5	57.4	52.9	54.9
05:30 to 05:45	58.1	56.4	57.1	55.8	58.7	54.7	53.5
05:45 to 06:00	60.1	60.2	59.6	60	Wind/Rain	58.5	55.3
06:00 to 06:15	60.9	61.3	61.8	61.1	63.2	59.1	57.8
06:15 to 06:30	61.6	61.9	61.7	63.1	Wind/Rain	59.1	56.9
06:30 to 06:45	61.9	64.4	Wind/Rain	64.5	63.5	Wind/Rain	55.8
06:45 to 07:00	62.8	65.3	61.2	64.6	64	60.9	57.1
07:00 to 07:15	65.4	66.1	64.7	65.5	64.9	62.4	60.3
07:15 to 07:30	64.3	65.2	66.1	67.4	65.3	61.9	59.6
07:30 to 07:45	67.3	65.8	64.5	65.4	65.7	63.6	60.7
07:45 to 08:00	66.5	66.3	66	66.4	67.6	64.2	62.8
08:00 to 08:15	67.4	67.9	67.4	67.5	67.9	64.2	62.4
08:15 to 08:30	67.5	68.6	67.7	67.4	Wind/Rain	64	60.5
08:30 to 08:45	68.8	68.8	67.6	67.7	Wind/Rain	64.6	62.2
08:45 to 09:00	69	68	68.7	68.3	69.6	64.3	64.1
09:00 to 09:15	71.9	69.3	67.1	67.8	69.3	65.2	63.8
09:15 to 09:30	68.8	65.9	67.4	66.6	66.8	65.4	63.6
09:30 to 09:45	69.8	Wind/Rain	65.1	66	65	65.5	64.1
09:45 to 10:00	70.4	Wind/Rain	64.9	Wind/Rain	Wind/Rain	68.9	64.1
10:00 to 10:15	67.1	Wind/Rain	64.5	Wind/Rain	68.4	65.5	65.7
10:15 to 10:30	65.6	Wind/Rain	65.5	65.1	64.4	65.3	64.4
10:30 to 10:45	64.4	Wind/Rain	64.3	Wind/Rain	64.2	65.9	64.8
10:45 to 11:00	66.4	Wind/Rain	Wind/Rain	Wind/Rain	62.3	66.1	64.6
11:00 to 11:15	67	Wind/Rain	Wind/Rain	Wind/Rain	64.7	66.7	64.9
11:15 to 11:30	Wind/Rain	64.6	65.5	65.2	Wind/Rain	65.8	64.3
11:30 to 11:45	Wind/Rain	64.6	Wind/Rain	Wind/Rain	66.9	65.6	65.3
11:45 to 12:00	Wind/Rain	Wind/Rain	Wind/Rain	Wind/Rain	68.2	65.5	Wind/Rain
12:00 to 12:15	71.3	Wind/Rain	Wind/Rain	Wind/Rain	Wind/Rain	66	64.7
12:15 to 12:30	66.6	Wind/Rain	Wind/Rain	Wind/Rain	Wind/Rain	65.6	Wind/Rain
12:30 to 12:45	65.6	Wind/Rain	Wind/Rain	Wind/Rain	70.1	65.3	Wind/Rain
12:45 to 13:00	66	Wind/Rain	Wind/Rain	Wind/Rain	69.2	64.9	Wind/Rain
13:00 to 13:15	66.3	Wind/Rain	Wind/Rain	Wind/Rain	68	65.5	Wind/Rain
13:15 to 13:30	Wind/Rain	Wind/Rain	65	Wind/Rain	67.1	65.2	Wind/Rain
13:30 to 13:45	Wind/Rain	Wind/Rain	Wind/Rain	Wind/Rain	67.5	64.5	Wind/Rain
13:45 to 14:00	Wind/Rain	Wind/Rain	Wind/Rain	Wind/Rain	66.7	65.2	Wind/Rain
14:00 to 14:15	Wind/Rain	Wind/Rain	64.8	Wind/Rain	67	68.5	Wind/Rain
14:15 to 14:30	Wind/Rain	Wind/Rain	Wind/Rain	Wind/Rain	Wind/Rain	65.1	Wind/Rain
14:30 to 14:45	Wind/Rain	Wind/Rain	Wind/Rain	Wind/Rain	67.5	65	Wind/Rain
14:45 to 15:00	Wind/Rain	Wind/Rain	Wind/Rain	Wind/Rain	68.3	65.2	Wind/Rain
15:00 to 15:15	Wind/Rain	66.2	Wind/Rain	Wind/Rain	67.5	64.9	Wind/Rain
15:15 to 15:30	Wind/Rain	Wind/Rain	Wind/Rain	Wind/Rain	68.2	64.5	Wind/Rain
15:30 to 15:45	Wind/Rain	Wind/Rain	Wind/Rain	Wind/Rain	68.4	65.4	Wind/Rain
15:45 to 16:00	67.6	67.8	Wind/Rain	Wind/Rain	68.4	65.2	Wind/Rain
16:00 to 16:15	Wind/Rain	67.6	Wind/Rain	Wind/Rain	68.2	65.5	Wind/Rain
16:15 to 16:30	67.2	68.9	Wind/Rain	Wind/Rain	67.2	65	Wind/Rain
16:30 to 16:45	66.5	67.7	Wind/Rain	Wind/Rain	67.4	64.7	Wind/Rain
16:45 to 17:00	65.9	65.9	65.3	Wind/Rain	66.6	65	Wind/Rain
17:00 to 17:15	65.8	65.9	66.5	Wind/Rain	66.8	65	Wind/Rain
17:15 to 17:30	66.4	66.2	68.6	Wind/Rain	67.1	64.5	Wind/Rain
17:30 to 17:45	65.3	64.9	66.6	Wind/Rain	66.8	64.5	Wind/Rain
17:45 to 18:00	64.6	64.8	65.1	Wind/Rain	66.8	64	Wind/Rain
18:00 to 18:15	64.6	64.4	65.4	Wind/Rain	66.6	63.6	Wind/Rain
18:15 to 18:30	62.6	63.8	62.9	Wind/Rain	64.5	63.4	61
18:30 to 18:45	62.5	62.8	62.8	Wind/Rain	64	61.9	60.2
18:45 to 19:00	62.2	62.3	Wind/Rain	Wind/Rain	63	63	60.9
19:00 to 19:15	61.2	61.5	61.1	Wind/Rain	63.3	62.5	59.2
19:15 to 19:30	59.6	58.6	60.8	62.6	62.9	61.6	58.6
19:30 to 19:45	59.4	59.6	60.2	61.5	61.7	61.5	59.1
19:45 to 20:00	59.8	58.5	59.6	Wind/Rain	62.6	60.4	60.6
20:00 to 20:15	58.9	60.3	59.1	Wind/Rain	61.1	61.2	59
20:15 to 20:30	59.3	59.2	58	60.2	60.6	58.8	60.3
20:30 to 20:45	58	59.6	58.4	59.9	59.6	60.8	58.7
20:45 to 21:00	56	58.7	59.8	60.8	Wind/Rain	59.8	58.9
21:00 to 21:15	57.4	56.7	60.8	60.8	Wind/Rain	60.8	58.5
21:15 to 21:30	54.7	57.8	57.5	Wind/Rain	Wind/Rain	59.5	55.9
21:30 to 21:45	55.4	57.3	57.5	58.1	61.5	59.9	Wind/Rain
21:45 to 22:00	56.3	57.8	57.4	56.6	60.8	59.5	Wind/Rain
22:00 to 22:15	55.7	56.1	58.1	Wind/Rain	59.9	60.2	Wind/Rain
22:15 to 22:30	54.2	54.3	57.5	57	59.3	59.4	55.2
22:30 to 22:45	55.3	54.6	57	55.5	57.7	58.8	55.6
22:45 to 23:00	53.2	53.6	55.4	54.9	58.1	59.5	53.6
23:00 to 23:15	52.7	55	55.4	55.9	57.3	58.5	54.1
23:15 to 23:30	52.5	53.6	51.9	55.2	57.7	55.5	51.3
23:30 to 23:45	52.6	50.5	53.4	52.8	55.8	57.1	49.8
23:45 to 00:00	55.9	52.4	51.6	53.2	52.4	56.9	48.9

002 Central location –NGARA1

002 - Central Local

Limit Standard=
Limit outside Standard=

	Mon 22/06/2020	Tue 23/06/2020	Wed 24/06/2020	Thu 25/06/2020	Fri 26/06/2020	Sat 27/06/2020	Sun 28/06/2020
00:00 to 00:15	51.4	51.9	47.2	50	52.5	54	ND
00:15 to 00:30	50	49.3	50.1	51.5	54.2	52.4	ND
00:30 to 00:45	53.3	51.8	50.4	53	49.6	55.5	ND
00:45 to 01:00	39.7	48.4	51	45.4	49.6	53.4	ND
01:00 to 01:15	50.4	36.4	52.2	38.1	47.3	50.7	ND
01:15 to 01:30	44.8	43.1	49.2	37.7	45.5	52.6	ND
01:30 to 01:45	50.4	41	48.2	37.8	45.5	51.2	ND
01:45 to 02:00	41.3	44	45	47.1	43.6	51.3	ND
02:00 to 02:15	47.9	44.7	50.8	49.9	49.6	49.9	ND
02:15 to 02:30	45.8	37.2	44.9	42.7	40.6	51.8	Wind/Rain
02:30 to 02:45	50.8	36.9	43.7	43.4	50.6	48.1	ND
02:45 to 03:00	51.9	47.4	45.1	40.1	44.5	51.6	ND
03:00 to 03:15	49.1	48.1	46.8	48.6	43.5	50.3	ND
03:15 to 03:30	50.9	41.7	49	38.9	49.2	48.8	ND
03:30 to 03:45	45.4	54.7	47.7	50.8	41.2	49.4	ND
03:45 to 04:00	49.2	50.7	46.3	46.2	47.3	44.5	ND
04:00 to 04:15	52.8	51	49.1	51	50.9	49.1	ND
04:15 to 04:30	55.1	53	56.1	51.9	53.1	52.1	ND
04:30 to 04:45	56.7	53.5	53.8	52.4	55	51	ND
04:45 to 05:00	55.6	54.5	55.1	56.1	52.1	51.5	ND
05:00 to 05:15	57.2	56.2	56.5	56.9	Wind/Rain	53.6	ND
05:15 to 05:30	57.9	56.7	56.8	57.8	56.8	51.5	ND
05:30 to 05:45	59.2	57.8	56.4	59	58.2	55.8	ND
05:45 to 06:00	61	60.4	60.4	60.9	58.5	58.2	ND
06:00 to 06:15	61.6	61	61.2	61.5	62.5	ND	ND
06:15 to 06:30	60.6	60.8	61.4	60.6	62.4	ND	ND
06:30 to 06:45	62.5	62.9	62.5	62.5	61.8	ND	ND
06:45 to 07:00	63.5	61.7	62.4	61.8	63.2	ND	ND
07:00 to 07:15	64.3	65	64.3	64.8	63.1	ND	ND
07:15 to 07:30	65.4	65.8	64.8	64.3	65.6	ND	ND
07:30 to 07:45	66.2	65.4	66.4	65.5	66.2	ND	ND
07:45 to 08:00	66.9	66.2	66.6	63.7	66.3	ND	ND
08:00 to 08:15	67.4	66.9	66.2	64.8	67.4	ND	ND
08:15 to 08:30	69.8	68.2	67.8	65	67.2	ND	ND
08:30 to 08:45	68.5	67.8	67.8	68.5	68.1	ND	ND
08:45 to 09:00	68.4	67.4	68.6	68.2	68.7	ND	Wind/Rain
09:00 to 09:15	67.7	67	68.3	67.3	68.1	ND	Wind/Rain
09:15 to 09:30	66.3	65.9	66.9	66.6	66.4	ND	ND
09:30 to 09:45	65.7	65.6	66.4	65.2	66.6	ND	Wind/Rain
09:45 to 10:00	65.3	65	65.5	65.9	66.6	ND	ND
10:00 to 10:15	64.7	64.5	66.8	65.9	66.8	ND	ND
10:15 to 10:30	65.2	64.6	64.3	63.6	67.2	ND	ND
10:30 to 10:45	65.2	66.9	65.7	65.7	Wind/Rain	ND	ND
10:45 to 11:00	65.4	65.9	65.3	65.8	Wind/Rain	Wind/Rain	ND
11:00 to 11:15	64.9	66.9	65.8	66	Wind/Rain	Wind/Rain	ND
11:15 to 11:30	64.3	68.8	65.7	65.8	65.3	ND	ND
11:30 to 11:45	65.1	65.5	66.1	64.8	65.2	ND	ND
11:45 to 12:00	Wind/Rain	65.4	66.4	65.7	65.1	ND	Wind/Rain
12:00 to 12:15	64.8	65.2	66.6	66.2	67.9	ND	Wind/Rain
12:15 to 12:30	65	65.5	66.4	65.2	67.1	ND	Wind/Rain
12:30 to 12:45	65.1	64.7	65.7	66.3	66.1	Wind/Rain	ND
12:45 to 13:00	65.3	65.4	64.9	Wind/Rain	67.4	Wind/Rain	ND
13:00 to 13:15	64.2	65.6	64.3	65	66.6	ND	ND
13:15 to 13:30	64.8	63.9	65.3	64.6	67.8	Wind/Rain	ND
13:30 to 13:45	65	Wind/Rain	64.6	65.5	65.8	Wind/Rain	ND
13:45 to 14:00	64.8	65.2	66.1	65.2	66.8	Wind/Rain	ND
14:00 to 14:15	64.9	64.5	64.6	64.8	65.5	Wind/Rain	Wind/Rain
14:15 to 14:30	65	65.1	65.4	65.8	67.2	Wind/Rain	ND
14:30 to 14:45	66.1	65.7	65.5	65.4	71.1	Wind/Rain	ND
14:45 to 15:00	66.5	66.8	65.5	66.6	66.9	Wind/Rain	ND
15:00 to 15:15	68.7	66.6	65.3	65.6	66.2	Wind/Rain	ND
15:15 to 15:30	66.7	67.6	66.9	Wind/Rain	67.4	ND	ND
15:30 to 15:45	66.6	67.2	67.2	Wind/Rain	68.5	ND	ND
15:45 to 16:00	68.4	67.8	67.7	Wind/Rain	67.5	ND	ND
16:00 to 16:15	67.5	67.6	66.9	69.1	66.7	ND	Wind/Rain
16:15 to 16:30	66.4	67.1	66.2	67.4	66	ND	ND
16:30 to 16:45	66.7	66.2	66.2	66.8	65.9	ND	ND
16:45 to 17:00	66.3	65.8	66.3	66.1	66.3	ND	Wind/Rain
17:00 to 17:15	66.7	66.2	66.3	66.4	64.9	ND	ND
17:15 to 17:30	65.7	65.4	65.3	65.5	65.7	ND	ND
17:30 to 17:45	65.6	65.3	65.4	65.4	65.6	ND	ND
17:45 to 18:00	65.2	65	64.7	64.8	64.7	ND	ND
18:00 to 18:15	64.6	64.9	64.6	65	65.2	ND	ND
18:15 to 18:30	63.1	63.1	63.9	64	64.3	ND	ND
18:30 to 18:45	63.1	62.6	63.1	63.3	63.8	ND	ND
18:45 to 19:00	62	62.5	62.3	62.5	63.1	ND	ND
19:00 to 19:15	61	61.8	62.1	61.9	62.8	ND	ND
19:15 to 19:30	60.1	60.2	61.3	60.6	62.6	ND	ND
19:30 to 19:45	60	60.5	60.7	62.4	61.5	ND	ND
19:45 to 20:00	58.8	60.1	60.4	59.5	59.9	ND	ND
20:00 to 20:15	59.7	58.6	60.7	60.4	60.7	ND	ND
20:15 to 20:30	58.8	58.9	61.6	60.9	60.4	ND	ND
20:30 to 20:45	59.1	57.7	60.5	58.7	60.9	ND	ND
20:45 to 21:00	59.6	60.1	59.3	60.6	59.4	ND	ND
21:00 to 21:15	57.6	58.3	58.3	59.7	60.2	ND	ND
21:15 to 21:30	56.2	57.6	57.1	58.3	59.9	ND	ND
21:30 to 21:45	57.2	59.6	58	58.5	59.4	ND	ND
21:45 to 22:00	58.4	56.7	58.2	57	58.1	ND	ND
22:00 to 22:15	56.3	54.5	54.1	57.9	57.1	ND	ND
22:15 to 22:30	50.8	53.7	56.3	55.1	59.2	ND	ND
22:30 to 22:45	54.2	51.2	53.8	56.8	58.9	ND	ND
22:45 to 23:00	51.3	53.1	54.5	55.7	58.1	ND	ND
23:00 to 23:15	51.5	55.5	54.9	54.4	57.8	ND	ND
23:15 to 23:30	53.5	46	55	54.5	53.8	ND	ND
23:30 to 23:45	49.7	54.7	55.1	56.9	56.2	ND	ND
23:45 to 00:00	52.5	50.7	51.7	50.7	53.7	ND	ND

002 Central location –NGARA1

002 - Central Local

Limit Standard=
Limit outside Standard=

	Mon 29/06/2020	Tue 30/06/2020
00:00 to 00:15	ND	42.9
00:15 to 00:30	ND	50.9
00:30 to 00:45	ND	46.9
00:45 to 01:00	ND	48.4
01:00 to 01:15	ND	52
01:15 to 01:30	ND	50.3
01:30 to 01:45	ND	45.1
01:45 to 02:00	ND	46.4
02:00 to 02:15	ND	49.7
02:15 to 02:30	ND	49.9
02:30 to 02:45	ND	44.6
02:45 to 03:00	ND	47.7
03:00 to 03:15	ND	51.6
03:15 to 03:30	ND	44.7
03:30 to 03:45	ND	45.9
03:45 to 04:00	ND	48.5
04:00 to 04:15	ND	52.9
04:15 to 04:30	ND	53.3
04:30 to 04:45	ND	55.9
04:45 to 05:00	ND	55.6
05:00 to 05:15	ND	58.5
05:15 to 05:30	ND	56.9
05:30 to 05:45	ND	58
05:45 to 06:00	ND	60.6
06:00 to 06:15	ND	62.3
06:15 to 06:30	ND	62
06:30 to 06:45	ND	63.6
06:45 to 07:00	ND	63.2
07:00 to 07:15	ND	66.3
07:15 to 07:30	ND	68.4
07:30 to 07:45	ND	66.7
07:45 to 08:00	ND	67.5
08:00 to 08:15	ND	68.6
08:15 to 08:30	Wind/Rain	69.4
08:30 to 08:45	Wind/Rain	69.3
08:45 to 09:00	ND	69.6
09:00 to 09:15	ND	69.3
09:15 to 09:30	ND	69
09:30 to 09:45	ND	67.3
09:45 to 10:00	ND	67.2
10:00 to 10:15	Wind/Rain	68.8
10:15 to 10:30	ND	66.2
10:30 to 10:45	Wind/Rain	65.7
10:45 to 11:00	Wind/Rain	66.1
11:00 to 11:15	Wind/Rain	67.5
11:15 to 11:30	Wind/Rain	67.4
11:30 to 11:45	Wind/Rain	67
11:45 to 12:00	70	66.6
12:00 to 12:15	69.1	66.9
12:15 to 12:30	69	66.8
12:30 to 12:45	69.8	67.5
12:45 to 13:00	Wind/Rain	66.6
13:00 to 13:15	68.5	66.8
13:15 to 13:30	Wind/Rain	Wind/Rain
13:30 to 13:45	Wind/Rain	Wind/Rain
13:45 to 14:00	Wind/Rain	66.1
14:00 to 14:15	Wind/Rain	66
14:15 to 14:30	Wind/Rain	66.5
14:30 to 14:45	Wind/Rain	67.5
14:45 to 15:00	Wind/Rain	67.4
15:00 to 15:15	Wind/Rain	67.5
15:15 to 15:30	Wind/Rain	68
15:30 to 15:45	Wind/Rain	68.2
15:45 to 16:00	Wind/Rain	68.7
16:00 to 16:15	Wind/Rain	67.5
16:15 to 16:30	Wind/Rain	67.5
16:30 to 16:45	67.1	66.7
16:45 to 17:00	Wind/Rain	67.1
17:00 to 17:15	Wind/Rain	66.4
17:15 to 17:30	Wind/Rain	65.8
17:30 to 17:45	66	66
17:45 to 18:00	65.6	65.9
18:00 to 18:15	65.5	65
18:15 to 18:30	64.1	64.7
18:30 to 18:45	63.2	63.9
18:45 to 19:00	63	63.5
19:00 to 19:15	61.3	62.1
19:15 to 19:30	60.6	61.3
19:30 to 19:45	60.8	60.7
19:45 to 20:00	59.6	61.2
20:00 to 20:15	60.7	59.1
20:15 to 20:30	60.5	60.9
20:30 to 20:45	57.4	59.9
20:45 to 21:00	61.1	59.6
21:00 to 21:15	60.4	61.3
21:15 to 21:30	57.1	58.2
21:30 to 21:45	59.6	58.9
21:45 to 22:00	56.2	56.7
22:00 to 22:15	57.8	56.7
22:15 to 22:30	57	55
22:30 to 22:45	56.4	56
22:45 to 23:00	52.5	53
23:00 to 23:15	52.5	53.9
23:15 to 23:30	53.3	54.6
23:30 to 23:45	53.7	52.8
23:45 to 00:00	54.2	51.8

003 Eastern section – NGARA3

003 - Eastern section of site

	Limit 47m= 69 High Noise 56m= 75	Limit 15m= 75 High noise 178= 81	Limit 7m= 81 High Noise 8m= 87	Limit 7m=	High Noise 7m=		
	Mon	Tue	Wed	Thu	Fri	Sat	Sun
	1/06/2020	2/06/2020	3/06/2020	4/06/2020	5/06/2020	6/06/2020	7/06/2020
00:00 to 00:15	45.5	48.4	39.1	43.3	51.2	52.1	52.5
00:15 to 00:30	44.4	46.4	41.6	43.6	46.6	51.3	50.2
00:30 to 00:45	44.8	47.1	35.2	43.2	46.9	51.6	49.3
00:45 to 01:00	Wind/Rain	43.6	35.5	43.2	40.9	46.3	49.4
01:00 to 01:15	42	40.8	44.2	46.4	40.6	46.8	49
01:15 to 01:30	42.2	43	42.7	42.2	50.4	47.2	51.1
01:30 to 01:45	41.8	45.7	44.5	44.8	42.8	48.6	48.3
01:45 to 02:00	43.2	44.9	44.2	47.5	40.8	48.2	46.3
02:00 to 02:15	45.4	40.7	43.6	46.9	43.3	43.6	48.2
02:15 to 02:30	45.3	40	41	46.4	44.3	46.9	48.7
02:30 to 02:45	43.8	37.6	35.4	46.5	46.1	46.5	49
02:45 to 03:00	42.4	42.1	39.3	45.9	43.9	43.4	49.8
03:00 to 03:15	46.1	42.1	35.3	43.9	41.9	45.7	47.7
03:15 to 03:30	43.7	44.8	39.5	46.9	46.2	44.7	46.3
03:30 to 03:45	44.6	36.5	46.7	43.5	45.5	47.1	46.1
03:45 to 04:00	42.6	39.5	40.8	43.7	47.4	43.6	45.5
04:00 to 04:15	45.9	42.3	45.8	46.3	44.8	44.7	46.7
04:15 to 04:30	45.7	45.3	42.4	47	46	46.7	46.3
04:30 to 04:45	48	46.7	47.2	48.9	48.8	48.8	45.1
04:45 to 05:00	50.6	50.4	52.8	49.5	50.8	51.9	48
05:00 to 05:15	50.4	52.3	51.6	50.7	51.2	49.4	48.5
05:15 to 05:30	53.4	50.4	50.8	51.2	50.4	48.5	47.2
05:30 to 05:45	54.4	54.1	53.8	52.1	55.6	51.3	48.6
05:45 to 06:00	56.3	55.3	55.9	55.6	56.8	54.3	50.9
06:00 to 06:15	55.9	61.1	55.3	56.2	55.9	55.5	50.8
06:15 to 06:30	57.3	58.4	58.1	Wind/Rain	58.1	53.2	53.1
06:30 to 06:45	59	59.1	60.2	Wind/Rain	57.8	56.5	55
06:45 to 07:00	58.9	59.7	58.7	Wind/Rain	59.9	58	57.2
07:00 to 07:15	59.8	59.9	60.7	Wind/Rain	60	57.7	54.8
07:15 to 07:30	58.9	64.6	71.6	Wind/Rain	61	63.3	55.8
07:30 to 07:45	63.7	63.5	69.6	Wind/Rain	65.5	58.1	55.6
07:45 to 08:00	66.2	64	71.6	Wind/Rain	66.7	58.3	57.1
08:00 to 08:15	66	68.4	70.6	Wind/Rain	69	58.2	59.2
08:15 to 08:30	65.7	69.1	71.8	Wind/Rain	72.1	56.8	57
08:30 to 08:45	65	77.7	67.3	Wind/Rain	71.4	57.8	57.6
08:45 to 09:00	65.7	70.1	71.7	Wind/Rain	Wind/Rain	58.3	58.7
09:00 to 09:15	68.8	66.1	70.8	Wind/Rain	Wind/Rain	59.1	60
09:15 to 09:30	68.1	Wind/Rain	71.4	Wind/Rain	69.8	59.7	59.6
09:30 to 09:45	67.5	Wind/Rain	71.5	Wind/Rain	67.2	58.7	59.9
09:45 to 10:00	65.7	68.3	66.8	Wind/Rain	64.9	61.2	58.8
10:00 to 10:15	Wind/Rain	71.1	70.3	Wind/Rain	68	60.7	59.1
10:15 to 10:30	Wind/Rain	66.5	69.3	Wind/Rain	Wind/Rain	59.4	58.9
10:30 to 10:45	Wind/Rain	65.9	59.8	Wind/Rain	70.2	60.8	61.5
10:45 to 11:00	67.1	67.5	62.8	Wind/Rain	Wind/Rain	59.3	60.5
11:00 to 11:15	69.1	Wind/Rain	67.1	69	65	59.4	59.6
11:15 to 11:30	69.3	60.6	67	Wind/Rain	61.8	59.4	58.8
11:30 to 11:45	Wind/Rain	59.9	Wind/Rain	Wind/Rain	63.3	59.7	59.5
11:45 to 12:00	Wind/Rain	60.8	68.8	Wind/Rain	Wind/Rain	60.2	60
12:00 to 12:15	Wind/Rain	Wind/Rain	65.2	Wind/Rain	Wind/Rain	60.3	60.7
12:15 to 12:30	Wind/Rain	63	68.5	Wind/Rain	Wind/Rain	Wind/Rain	61.4
12:30 to 12:45	Wind/Rain	73.9	69.8	Wind/Rain	Wind/Rain	Wind/Rain	59
12:45 to 13:00	67.5	72.2	70.1	Wind/Rain	65.8	Wind/Rain	58.3
13:00 to 13:15	69.6	Wind/Rain	69.5	Wind/Rain	Wind/Rain	Wind/Rain	59.1
13:15 to 13:30	Wind/Rain	65.5	69	Wind/Rain	Wind/Rain	Wind/Rain	59.1
13:30 to 13:45	Wind/Rain	63.7	66.9	Wind/Rain	Wind/Rain	Wind/Rain	60.3
13:45 to 14:00	Wind/Rain	67.8	61	Wind/Rain	Wind/Rain	Wind/Rain	58.5
14:00 to 14:15	Wind/Rain	67.6	64.3	Wind/Rain	Wind/Rain	Wind/Rain	65.5
14:15 to 14:30	Wind/Rain	64.7	66	Wind/Rain	Wind/Rain	Wind/Rain	Wind/Rain
14:30 to 14:45	Wind/Rain	65.4	67	Wind/Rain	Wind/Rain	Wind/Rain	Wind/Rain
14:45 to 15:00	Wind/Rain	70.2	69.1	Wind/Rain	63	Wind/Rain	Wind/Rain
15:00 to 15:15	Wind/Rain	71.3	66.6	Wind/Rain	Wind/Rain	59.7	58.7
15:15 to 15:30	Wind/Rain	70.6	Wind/Rain	Wind/Rain	Wind/Rain	58.8	Wind/Rain
15:30 to 15:45	Wind/Rain	69.8	Wind/Rain	64.3	Wind/Rain	59.6	59.6
15:45 to 16:00	Wind/Rain	71.3	63.7	Wind/Rain	Wind/Rain	61.1	58.6
16:00 to 16:15	Wind/Rain	70.8	65.4	Wind/Rain	Wind/Rain	67.3	59.3
16:15 to 16:30	Wind/Rain	62.6	Wind/Rain	Wind/Rain	Wind/Rain	59.1	58.5
16:30 to 16:45	Wind/Rain	61.4	63.1	62	Wind/Rain	59.7	57.5
16:45 to 17:00	Wind/Rain	60.8	63.6	61.4	Wind/Rain	60	58.3
17:00 to 17:15	Wind/Rain	59.8	61.1	60.6	Wind/Rain	60.2	58.2
17:15 to 17:30	Wind/Rain	59.8	59.7	60.6	60.9	58.8	Wind/Rain
17:30 to 17:45	Wind/Rain	59.5	60	59.8	59.9	58.1	Wind/Rain
17:45 to 18:00	Wind/Rain	59.8	61.1	Wind/Rain	Wind/Rain	57.7	57
18:00 to 18:15	58.4	58.8	59.7	59.4	60.4	58	56.1
18:15 to 18:30	57.2	57.5	58.8	59	58.7	56.7	56.2
18:30 to 18:45	57	57	56.6	57.7	58.1	58.9	55.5
18:45 to 19:00	56.9	58.5	57	57.7	58.3	56	53.9
19:00 to 19:15	55.8	56.5	55	56	57.5	55.3	54.9
19:15 to 19:30	54	53.7	54.1	56	54.5	54.8	53.3
19:30 to 19:45	53.8	55.2	53.1	54.2	55.9	53.8	Wind/Rain
19:45 to 20:00	54.9	54.9	55.1	54.3	55.5	54.1	51.7
20:00 to 20:15	51.8	53.2	55.8	55.1	56.1	54.2	52.6
20:15 to 20:30	Wind/Rain	54.4	53.9	55.3	55.4	54.8	53.5
20:30 to 20:45	52.2	53.9	51	53.9	54	53.5	52.6
20:45 to 21:00	52.5	53.3	53.9	55.5	54.1	53.8	52.2
21:00 to 21:15	53	53.1	54.8	53.7	52.8	53.9	52.7
21:15 to 21:30	50.7	52.9	52.6	54.8	56.6	52.4	52.3
21:30 to 21:45	51	50.7	50.6	51.7	54.3	52.6	55.1
21:45 to 22:00	51.1	49.2	52.3	52	54.9	54.4	52.9
22:00 to 22:15	54.2	53.4	58.2	57.1	54.9	52.4	48.9
22:15 to 22:30	48.7	50.7	50.4	52.5	53.5	51.9	49.1
22:30 to 22:45	51	51.3	51	50	52.4	50.9	50.1
22:45 to 23:00	49.2	46.9	49.4	50.5	51.4	53.6	54.5
23:00 to 23:15	49.9	43.7	48.6	49.1	53.2	52.1	51.8
23:15 to 23:30	50.3	48.8	47.5	48.3	49.8	55	44.3
23:30 to 23:45	50.7	44.3	45.5	48	51.9	53.9	45.6
23:45 to 00:00	48.7	48.3	51.3	47.4	48.5	51.4	44.7

003 Eastern section – NGA3

003 - Eastern secti

87
93

	Mon 8/06/2020	Tue 9/06/2020	Wed 10/06/2020	Thu 11/06/2020	Fri 12/06/2020	Sat 13/06/2020	Sun 14/06/2020
00:00 to 00:15	43.3	48.6	47.2	45	48.7	48.8	49.2
00:15 to 00:30	44.7	Wind/Rain	Wind/Rain	43.6	46	48	50.1
00:30 to 00:45	44.7	Wind/Rain	Wind/Rain	39.8	44.4	49	48.6
00:45 to 01:00	44.1	Wind/Rain	49.8	42.9	43.8	48.3	48.5
01:00 to 01:15	44.3	Wind/Rain	Wind/Rain	Wind/Rain	46.4	50.3	Wind/Rain
01:15 to 01:30	40.2	40.8	45.4	Wind/Rain	44.9	46.1	48.7
01:30 to 01:45	42.3	42.6	46.3	44.5	46.7	42.9	54.5
01:45 to 02:00	43.8	45.4	46.5	42.4	46.9	46.7	49.7
02:00 to 02:15	44	43.3	48.1	45.4	46.1	49.1	47.5
02:15 to 02:30	46.2	43.4	45	38.5	46.5	47.4	47.4
02:30 to 02:45	43.8	41.4	Wind/Rain	42.8	43.8	42.6	Wind/Rain
02:45 to 03:00	44.3	42.6	42.9	42.2	41.3	45	47.2
03:00 to 03:15	42.2	41.6	42.5	42.4	43.9	47.8	46.9
03:15 to 03:30	42.1	41.2	45	43.8	46.3	46.6	45.8
03:30 to 03:45	45.6	45.3	45.8	44.7	44	45.2	Wind/Rain
03:45 to 04:00	44.1	44.9	48	43.8	46.2	40.7	Wind/Rain
04:00 to 04:15	48.3	50.6	Wind/Rain	44.5	47.2	45.7	Wind/Rain
04:15 to 04:30	Wind/Rain	47.7	54.3	46.2	46.9	49	Wind/Rain
04:30 to 04:45	49.6	51.6	51.6	45.4	48	47.9	Wind/Rain
04:45 to 05:00	49.7	51.5	51.6	48.9	49.9	46.7	49.8
05:00 to 05:15	48.7	52	51	50.3	52	46.9	47
05:15 to 05:30	53.3	51.4	51.2	50.4	53.6	51	48.5
05:30 to 05:45	50.2	53.3	Wind/Rain	49.9	52.7	49.9	48.6
05:45 to 06:00	56	55.2	56.3	Wind/Rain	55	52.4	50
06:00 to 06:15	52.1	57.5	56.8	55.7	56.5	54.3	49.6
06:15 to 06:30	53.5	57.3	56.4	56.2	56.5	53.5	Wind/Rain
06:30 to 06:45	56.3	58.5	59.2	58	59	56.3	Wind/Rain
06:45 to 07:00	56.2	Wind/Rain	59.4	58.4	57.7	58.3	Wind/Rain
07:00 to 07:15	58.2	59.9	59.1	59.3	59.9	56	Wind/Rain
07:15 to 07:30	55.5	59.2	59.5	58.5	60.9	55.8	55.2
07:30 to 07:45	56.6	59.8	Wind/Rain	62.6	70.6	57.1	Wind/Rain
07:45 to 08:00	57.6	61.2	61.1	64.6	70.7	58.6	55.8
08:00 to 08:15	57.9	62.4	62.3	63.2	68.4	58.9	Wind/Rain
0815 to 0830	57.3	62.2	Wind/Rain	64.1	Wind/Rain	58.2	Wind/Rain
08:30 to 08:45	56.9	62.1	Wind/Rain	64.3	Wind/Rain	58.4	56.7
08:45 to 09:00	58.2	62.4	Wind/Rain	65	Wind/Rain	59.9	59.7
09:00 to 09:15	58.7	61.9	63.1	63.5	Wind/Rain	59.5	59.9
09:15 to 09:30	58.9	60.3	62.2	62.5	62.5	59	Wind/Rain
09:30 to 09:45	59.2	61.2	60.9	61.2	65.7	58.6	Wind/Rain
09:45 to 10:00	Wind/Rain	59.8	60.8	62.8	63.5	60.8	Wind/Rain
10:00 to 10:15	Wind/Rain	60.4	64.2	63.1	Wind/Rain	59.4	Wind/Rain
10:15 to 10:30	Wind/Rain	Wind/Rain	Wind/Rain	62.4	Wind/Rain	60.1	Wind/Rain
10:30 to 10:45	Wind/Rain	61.4	Wind/Rain	64	Wind/Rain	60.2	Wind/Rain
10:45 to 11:00	60.6	Wind/Rain	Wind/Rain	Wind/Rain	Wind/Rain	61.3	Wind/Rain
11:00 to 11:15	Wind/Rain	Wind/Rain	Wind/Rain	60	Wind/Rain	61	Wind/Rain
11:15 to 11:30	Wind/Rain	Wind/Rain	Wind/Rain	61.5	Wind/Rain	63.9	Wind/Rain
11:30 to 11:45	59.6	Wind/Rain	Wind/Rain	63.5	Wind/Rain	63.8	Wind/Rain
11:45 to 12:00	60.1	Wind/Rain	62.4	61.3	Wind/Rain	66.7	Wind/Rain
12:00 to 12:15	58.7	Wind/Rain	62.5	62.1	Wind/Rain	60	Wind/Rain
12:15 to 12:30	59.4	Wind/Rain	61.3	62.2	Wind/Rain	61.4	Wind/Rain
12:30 to 12:45	Wind/Rain	Wind/Rain	64.2	72.9	Wind/Rain	60.1	Wind/Rain
12:45 to 13:00	Wind/Rain	Wind/Rain	Wind/Rain	62.9	Wind/Rain	59.6	Wind/Rain
13:00 to 13:15	Wind/Rain	Wind/Rain	Wind/Rain	63	Wind/Rain	60.5	Wind/Rain
13:15 to 13:30	Wind/Rain	Wind/Rain	Wind/Rain	63.9	Wind/Rain	59.4	58.5
13:30 to 13:45	59.9	Wind/Rain	Wind/Rain	62.3	Wind/Rain	61.9	Wind/Rain
13:45 to 14:00	60.4	Wind/Rain	Wind/Rain	61.5	Wind/Rain	64.5	Wind/Rain
14:00 to 14:15	Wind/Rain	Wind/Rain	Wind/Rain	Wind/Rain	Wind/Rain	58.8	Wind/Rain
14:15 to 14:30	Wind/Rain	Wind/Rain	Wind/Rain	66.5	59.6	63.8	Wind/Rain
14:30 to 14:45	Wind/Rain	Wind/Rain	Wind/Rain	Wind/Rain	Wind/Rain	58.6	Wind/Rain
14:45 to 15:00	Wind/Rain	Wind/Rain	60.9	Wind/Rain	Wind/Rain	59.8	Wind/Rain
15:00 to 15:15	58.8	Wind/Rain	63.5	Wind/Rain	61.6	61	58.8
15:15 to 15:30	60	Wind/Rain	65	63.5	64.7	59.5	56.3
15:30 to 15:45	59.3	Wind/Rain	64.2	62.1	64.9	59.2	56.1
15:45 to 16:00	Wind/Rain	63.7	63.9	Wind/Rain	63.8	59.2	58.2
16:00 to 16:15	58.5	63.2	Wind/Rain	63.4	62.7	59.6	56.4
16:15 to 16:30	58.8	Wind/Rain	Wind/Rain	Wind/Rain	61.4	59.6	56.7
16:30 to 16:45	60.2	Wind/Rain	Wind/Rain	61.1	62.9	59.2	56.2
16:45 to 17:00	59	Wind/Rain	62	60.7	62	59.1	57.6
17:00 to 17:15	57.8	Wind/Rain	61.4	60.7	62.1	58.9	55.4
17:15 to 17:30	58.4	60.8	Wind/Rain	60.6	62	60.2	55.7
17:30 to 17:45	57.7	59.4	Wind/Rain	61	59.6	57	56.1
17:45 to 18:00	58	60.2	59.9	60.2	60.5	57.6	56.2
18:00 to 18:15	55.8	58.9	60.2	59.5	59.9	56.5	54.7
18:15 to 18:30	56.2	58.7	57.8	58.8	58.5	57.7	56.1
18:30 to 18:45	Wind/Rain	58.5	59.8	57.8	57.6	57.1	54.2
18:45 to 19:00	Wind/Rain	56.8	57.4	57.2	58.4	56.5	54.7
19:00 to 19:15	Wind/Rain	57.8	Wind/Rain	56.8	56.8	56.8	52.8
19:15 to 19:30	54.4	55.6	54.2	54.6	54.2	54	52.7
19:30 to 19:45	54	55.9	55.9	55.2	56	55.3	48.4
19:45 to 20:00	51.7	53	53.6	54.3	55.6	56.1	53.3
20:00 to 20:15	52.1	Wind/Rain	54.5	55.6	54.6	56.1	52.5
20:15 to 20:30	51.6	53.6	54.4	53.4	57.7	54.3	52.2
20:30 to 20:45	51.3	Wind/Rain	53.9	53.6	53.6	53.8	51.3
20:45 to 21:00	50.6	53.1	Wind/Rain	55	54.4	55.5	Wind/Rain
21:00 to 21:15	50.6	Wind/Rain	Wind/Rain	Wind/Rain	57.2	53.5	52.8
21:15 to 21:30	48.9	Wind/Rain	Wind/Rain	52.3	57	54	Wind/Rain
21:30 to 21:45	49.4	52	Wind/Rain	52.8	52.5	54.2	50.3
21:45 to 22:00	49.6	52.1	61.6	52.5	54.7	54.4	50.3
22:00 to 22:15	50.3	50.5	59.8	54.6	54.4	53.9	46
22:15 to 22:30	49.5	53.7	Wind/Rain	51.6	51.8	53.2	50.5
22:30 to 22:45	46.3	47.9	53.6	51.9	56.1	50.7	48.5
22:45 to 23:00	45.5	49.1	Wind/Rain	50.8	53.3	52.8	48.7
23:00 to 23:15	47.9	49.7	41.3	48.1	53.3	55.8	46.1
23:15 to 23:30	45.7	48.4	46.8	50	50.9	51.4	42.2
23:30 to 23:45	48.1	44.1	Wind/Rain	48.4	50.5	50.1	41.7
23:45 to 00:00	45.4	46.7	Wind/Rain	47.8	51.5	48.6	Wind/Rain

003 Eastern section – NGARA3

003 - Eastern secti

	Mon 15/06/2020	Tue 16/06/2020	Wed 17/06/2020	Thu 18/06/2020	Fri 19/06/2020	Sat 20/06/2020	Sun 21/06/2020
00:00 to 00:15	45.6	48	45.8	45.1	50.6	Wind/Rain	52
00:15 to 00:30	45	47	46.2	45.5	47.4		50.4
00:30 to 00:45	41.7	46.9	46.8	44.4	47.1	51.1	50.3
00:45 to 01:00	47.1	45.9	49.1	46.6	48.9	49.3	49
01:00 to 01:15	43.6	44.7	42.4	45.8	45.2	47.7	47.9
01:15 to 01:30	40.2	44	43.7	55.4	44.7	45.6	45.5
01:30 to 01:45	42.2	43.7	51.8	44.9	45.9	47.1	47.8
01:45 to 02:00	44	46.1	43.5	45.2	45.9	47.3	46.6
02:00 to 02:15	45.2	45	44.9	47.6	Wind/Rain	47.1	46.4
02:15 to 02:30	49	44.9	45.5	43.8	46.3	46.6	48.1
02:30 to 02:45	40.5	44.2	44.1	44.7	47.5	42.4	45.8
02:45 to 03:00	42.6	43.6	49.9	43.7	41.2	52.6	46.3
03:00 to 03:15	43.1	44.3	47.4	42.8	41.7	47.1	45.4
03:15 to 03:30	41.2	42.1	47.3	43.3	44.6	46.8	46.6
03:30 to 03:45	46.1	46.3	46.1	45.1	Wind/Rain	46.3	47.9
03:45 to 04:00	45.9	46	48.4	47.7	46.3	46.4	44.6
04:00 to 04:15	47.6	47.4	48.7	46.7	48	46.9	46.8
04:15 to 04:30	47.6	48.1	51.3	45.9	46.2	Wind/Rain	45.7
04:30 to 04:45	48	51.8	48.9	48.7	49.2	47.5	46.7
04:45 to 05:00	51.3	48.7	52.9	51.1	54	49.6	48.6
05:00 to 05:15	51.4	50.6	54.2	51.6	Wind/Rain	Wind/Rain	50.3
05:15 to 05:30	51.3	51.6	52.1	53.7	51.7	48.4	47.4
05:30 to 05:45	53.2	53.4	54	55.2	54.5	49.6	49.6
05:45 to 06:00	54.9	55.3	55.5	52.7	Wind/Rain	53.1	48.4
06:00 to 06:15	55.8	56.1	56.5	56	58.5	52.6	51.4
06:15 to 06:30	55.7	57.4	57.8	57	Wind/Rain	55	51.6
06:30 to 06:45	57.8	58.3	Wind/Rain	59.1	59.9	Wind/Rain	52.4
06:45 to 07:00	59.3	58.9	58.9	61.2	59.6	56.9	57.2
07:00 to 07:15	59.9	60.7	61.1	58.9	59.6	57.4	55.1
07:15 to 07:30	58	61	62.4	60.9	58.7	57.5	55
07:30 to 07:45	61.5	61.2	60.6	60.5	60.4	58.8	54.3
07:45 to 08:00	60.4	68.4	61.3	60.1	60.4	59.1	57.7
08:00 to 08:15	60.9	66.1	61.9	60.7	64.1	57.9	55.9
08:15 to 08:30	61.7	62.6	62.8	61.2	Wind/Rain	58.5	55.4
08:30 to 08:45	62.6	66.3	61.9	61.6	Wind/Rain	58.4	56.5
08:45 to 09:00	63.2	64	62.5	62.9	63.5	59.2	57
09:00 to 09:15	61.3	61.4	61.6	62.4	63	58.7	56.6
09:15 to 09:30	59.9	59.4	60.9	60.5	61.8	58.9	57.5
09:30 to 09:45	60.2	Wind/Rain	60.4	60.2	60.5	59.2	57.7
09:45 to 10:00	61.1	Wind/Rain	59.8	Wind/Rain	Wind/Rain	68.1	57.6
10:00 to 10:15	60.2	Wind/Rain	60.1	Wind/Rain	60	58.9	59.8
10:15 to 10:30	59.6	Wind/Rain	63.9	59.5	63.1	59.6	58.6
10:30 to 10:45	58.5	Wind/Rain	58.8	Wind/Rain	61.2	59.7	57.8
10:45 to 11:00	61.2	Wind/Rain	Wind/Rain	Wind/Rain	59.2	60.1	58.4
11:00 to 11:15	60.6	Wind/Rain	Wind/Rain	Wind/Rain	60.4	60.4	58.6
11:15 to 11:30	Wind/Rain	59.8	60.7	60.1	Wind/Rain	58.9	57.8
11:30 to 11:45	Wind/Rain	59.8	Wind/Rain	Wind/Rain	63.1	58.8	59.2
11:45 to 12:00	Wind/Rain	Wind/Rain	Wind/Rain	Wind/Rain	63.2	60.1	Wind/Rain
12:00 to 12:15	60.6	Wind/Rain	Wind/Rain	Wind/Rain	Wind/Rain	60.3	58.7
12:15 to 12:30	61.3	Wind/Rain	Wind/Rain	Wind/Rain	Wind/Rain	59.1	Wind/Rain
12:30 to 12:45	59.8	Wind/Rain	Wind/Rain	Wind/Rain	62.6	58.9	Wind/Rain
12:45 to 13:00	60.4	Wind/Rain	Wind/Rain	Wind/Rain	62.3	59.2	Wind/Rain
13:00 to 13:15	61.1	Wind/Rain	Wind/Rain	Wind/Rain	60.7	58.9	Wind/Rain
13:15 to 13:30	Wind/Rain	Wind/Rain	59.5	Wind/Rain	59.9	58.9	Wind/Rain
13:30 to 13:45	Wind/Rain	Wind/Rain	Wind/Rain	Wind/Rain	60.7	58.6	Wind/Rain
13:45 to 14:00	Wind/Rain	Wind/Rain	Wind/Rain	Wind/Rain	60.8	60	Wind/Rain
14:00 to 14:15	Wind/Rain	Wind/Rain	60.3	Wind/Rain	60	67	Wind/Rain
14:15 to 14:30	Wind/Rain	Wind/Rain	Wind/Rain	Wind/Rain	Wind/Rain	59.1	Wind/Rain
14:30 to 14:45	Wind/Rain	Wind/Rain	Wind/Rain	Wind/Rain	61.7	58.9	Wind/Rain
14:45 to 15:00	Wind/Rain	Wind/Rain	Wind/Rain	Wind/Rain	61.7	59.4	Wind/Rain
15:00 to 15:15	Wind/Rain	62.5	Wind/Rain	Wind/Rain	61.3	57.9	Wind/Rain
15:15 to 15:30	Wind/Rain	Wind/Rain	Wind/Rain	Wind/Rain	61.8	59.1	Wind/Rain
15:30 to 15:45	Wind/Rain	Wind/Rain	Wind/Rain	Wind/Rain	62.1	60.1	Wind/Rain
15:45 to 16:00	62.6	61.9	Wind/Rain	Wind/Rain	63.3	59.8	Wind/Rain
16:00 to 16:15	Wind/Rain	62.8	Wind/Rain	Wind/Rain	62.3	58.5	Wind/Rain
16:15 to 16:30	60.9	63.1	Wind/Rain	Wind/Rain	62.3	60	Wind/Rain
16:30 to 16:45	60.9	61.5	Wind/Rain	Wind/Rain	61.3	59.9	Wind/Rain
16:45 to 17:00	64.7	60.8	59.5	Wind/Rain	59.9	59.5	Wind/Rain
17:00 to 17:15	60.1	61.3	61.6	Wind/Rain	59.5	59.1	Wind/Rain
17:15 to 17:30	67.1	59.9	60.2	Wind/Rain	60.2	57.9	Wind/Rain
17:30 to 17:45	59	58.9	60	Wind/Rain	60	59	Wind/Rain
17:45 to 18:00	58.4	58.6	58.9	Wind/Rain	61.4	57.4	Wind/Rain
18:00 to 18:15	58.1	58.8	57.4	Wind/Rain	58.8	56.8	Wind/Rain
18:15 to 18:30	56.2	57.9	57	Wind/Rain	57.3	56.2	54.4
18:30 to 18:45	56.5	60.2	57	Wind/Rain	56.8	55.9	53.9
18:45 to 19:00	55.9	57.7	Wind/Rain	Wind/Rain	56.4	56.7	53.5
19:00 to 19:15	55.9	55	55.9	Wind/Rain	57.3	56	52.5
19:15 to 19:30	54	54.9	53.5	57.7	55.3	55.7	51.4
19:30 to 19:45	53.8	53.5	54.5	56.8	56.3	54	54.6
19:45 to 20:00	56.1	53.2	54.6	Wind/Rain	55.6	54.9	55.1
20:00 to 20:15	53.2	55.2	54.8	Wind/Rain	54.4	53.7	53.9
20:15 to 20:30	53.8	52.1	52.8	55.1	54.1	52.2	54.2
20:30 to 20:45	51.2	56.8	53.9	54.9	53	54.5	55.3
20:45 to 21:00	53.4	53.1	53.3	55.6	Wind/Rain	54.7	51.4
21:00 to 21:15	50.3	51.3	55.9	53.5	Wind/Rain	53.5	52.4
21:15 to 21:30	50.3	53.4	52.1	Wind/Rain	Wind/Rain	56.8	50.8
21:30 to 21:45	49.7	53.5	51.9	51.9	54.8	54.9	Wind/Rain
21:45 to 22:00	51.1	52.4	52.1	49.8	54.2	54.6	Wind/Rain
22:00 to 22:15	51.7	50.8	51.8	Wind/Rain	53.9	54.1	Wind/Rain
22:15 to 22:30	47.7	47.5	52.1	51.4	51.5	52.6	49.2
22:30 to 22:45	51.4	49	51.7	48.8	52.1	52	52.9
22:45 to 23:00	48.8	58.1	51.8	49	51.3	53.9	47.5
23:00 to 23:15	47.4	45.4	46.3	49.1	50.7	51.2	46.9
23:15 to 23:30	47.1	47.6	44.7	48.8	50.6	50	44.9
23:30 to 23:45	49.3	44	47.5	49.7	51.3	48.5	40.4
23:45 to 00:00	54.8	47	45.8	48.2	46.6	51.9	44.4

003 Eastern section – NGARA3

003 - Eastern secti

	Mon 22/06/2020	Tue 23/06/2020	Wed 24/06/2020	Thu 25/06/2020	Fri 26/06/2020	Sat 27/06/2020	Sun 28/06/2020
00:00 to 00:15	43.8	45.7	44.2	44	46.4	50.1	51.6
00:15 to 00:30	45.2	41.8	43.2	44.2	54.9	46.9	50.4
00:30 to 00:45	45.5	50.1	43.6	47.2	44.8	49.8	50.9
00:45 to 01:00	39.4	43	50.5	40	46.6	47.3	47
01:00 to 01:15	51	34.4	44.2	36.5	41.3	46.2	46.8
01:15 to 01:30	43.2	38.2	41.3	37	42.3	47.4	45.4
01:30 to 01:45	41.6	37	41	40.9	41.5	46.5	45.6
01:45 to 02:00	39.4	37.8	38.8	38.5	39.9	45.8	46.9
02:00 to 02:15	44.1	43.1	45.4	44.8	44.2	43.7	53
02:15 to 02:30	39.4	36.6	41	40.1	38.7	44.8	Wind/Rain
02:30 to 02:45	46.1	35.9	39.5	40.5	46.7	43.9	49
02:45 to 03:00	42.6	39.8	38.9	39.5	37.7	48.3	46.2
03:00 to 03:15	43.1	42.5	44.2	42.3	40	43.8	44.3
03:15 to 03:30	44.8	37.7	40.1	38.1	43.8	44.7	49.5
03:30 to 03:45	40.5	52.9	42.6	42.8	39.5	46.6	47.9
03:45 to 04:00	43.7	53.2	39.9	41.6	43.3	41.9	49.1
04:00 to 04:15	46.7	46.2	48.7	44.5	45.3	43.9	48.9
04:15 to 04:30	47.9	44.8	44.6	46.1	46.4	46	44.9
04:30 to 04:45	51.6	49.9	51.5	45.9	48.9	45.9	45.6
04:45 to 05:00	49.6	46.9	49.2	52.6	49.5	48.6	49.6
05:00 to 05:15	51.3	50.4	50.9	51	Wind/Rain	47.7	45.7
05:15 to 05:30	53.3	50	50.9	54	51	47.4	46
05:30 to 05:45	55.4	53.6	54.4	54.8	53.6	50.5	49.2
05:45 to 06:00	55.9	58.2	55	56.6	53.4	52.4	51.3
06:00 to 06:15	56.5	55.3	56.7	55.8	63.4	53.2	49.7
06:15 to 06:30	56.4	55.5	56.9	56.9	61.2	53.5	50.3
06:30 to 06:45	57.8	58.5	59.3	59.4	57.3	53.2	53.1
06:45 to 07:00	61.2	57.6	58.3	58.4	59.3	58.6	55.5
07:00 to 07:15	59.4	59.5	58.4	59.1	57.9	56.4	53.4
07:15 to 07:30	58.4	58.4	59.2	58.8	58.7	57.8	53.1
07:30 to 07:45	61.1	60.9	60.2	60	59.9	57.8	56.2
07:45 to 08:00	61.1	59.7	60.9	60.3	61.5	58.6	55.1
08:00 to 08:15	60.8	60.5	60.8	61.3	61.9	57.7	56.1
0815 to 0830	61.7	61.2	62.6	61.2	61.8	58	54.3
08:30 to 08:45	61.7	60.9	63.4	62.8	62.5	58	56.9
08:45 to 09:00	62	62.2	63	61.9	62.9	57.2	Wind/Rain
09:00 to 09:15	61.1	60.1	63.1	61	62.8	59.1	Wind/Rain
09:15 to 09:30	60.5	59.3	61	60.4	60	58.4	58.4
09:30 to 09:45	59.3	59.4	60.9	59.4	60.7	59.5	Wind/Rain
09:45 to 10:00	59.7	59.1	59.3	62.3	61.7	59.9	60.6
10:00 to 10:15	59.6	58.7	61.5	61.3	61.2	59	59.8
10:15 to 10:30	59.4	59.4	60.2	57.6	62.3	59.7	59.6
10:30 to 10:45	60.9	60.9	59.9	60.2	Wind/Rain	59.8	59.6
10:45 to 11:00	60.2	58.2	59.7	60.1	Wind/Rain	Wind/Rain	61.2
11:00 to 11:15	59.3	59.9	60.2	60.6	Wind/Rain	Wind/Rain	61.1
11:15 to 11:30	59.1	59.1	60.7	60.2	60.4	59.1	62.7
11:30 to 11:45	59.9	60.4	59.9	59.7	59.9	59.8	64.7
11:45 to 12:00	Wind/Rain	58.8	59.9	60	59.9	61	Wind/Rain
12:00 to 12:15	58.7	60.4	61	60.5	64	59.9	Wind/Rain
12:15 to 12:30	58.6	59.9	59.9	59.2	67.9	60.5	Wind/Rain
12:30 to 12:45	59	61.3	61	60.6	68.4	Wind/Rain	60.5
12:45 to 13:00	58.7	58.6	59.9	Wind/Rain	66.3	Wind/Rain	60.6
13:00 to 13:15	57.5	59.2	59	60.4	64.7	60.1	61.1
13:15 to 13:30	60.3	58.8	59.5	59.7	64	Wind/Rain	61.3
13:30 to 13:45	58.6	Wind/Rain	59.6	61.1	62.8	Wind/Rain	60
13:45 to 14:00	58.9	61.6	60.5	59.9	64.3	Wind/Rain	59.8
14:00 to 14:15	58.4	59	58.6	59.8	64.6	Wind/Rain	Wind/Rain
14:15 to 14:30	59.3	59.9	60.2	60.9	62.3	Wind/Rain	60.6
14:30 to 14:45	60.2	60.1	60.1	60.3	62.7	Wind/Rain	60.6
14:45 to 15:00	59.8	60.2	59.8	61.4	61.6	Wind/Rain	60.4
15:00 to 15:15	62.3	62	59	59.7	61.4	Wind/Rain	61.9
15:15 to 15:30	60.7	61.6	62	Wind/Rain	62.5	62	61
15:30 to 15:45	59.7	61.1	61	Wind/Rain	64	58.4	62.3
15:45 to 16:00	61	62.4	61	Wind/Rain	62.4	58.2	62.6
16:00 to 16:15	60.3	61	61.4	62.2	60.9	59	Wind/Rain
16:15 to 16:30	60.3	62.2	59.9	61.9	61.3	61.6	59.9
16:30 to 16:45	63.2	59.8	61	60.5	60.3	58.4	58.5
16:45 to 17:00	60.2	60.3	59.7	62.6	60.7	60.2	Wind/Rain
17:00 to 17:15	60	60.1	59.6	60.7	59.7	58.3	58
17:15 to 17:30	59.9	60.8	59.2	58.8	59.7	58.1	58.5
17:30 to 17:45	58.5	60	59	59.1	59.2	59.7	57.5
17:45 to 18:00	59.3	58.5	58.7	59	58.7	57.3	57.1
18:00 to 18:15	58.1	58.6	58.6	58.2	59	56.1	56.4
18:15 to 18:30	57.1	56.3	57.8	58.5	58.5	55.9	56.3
18:30 to 18:45	60.3	56.4	56.6	57	57.4	56.1	55.1
18:45 to 19:00	54.7	56.2	56.8	57.5	57.8	55.8	55
19:00 to 19:15	54.7	56.5	57.6	55.2	57.4	54.7	55.4
19:15 to 19:30	54	55.3	55.4	55.1	55.7	54.1	50.9
19:30 to 19:45	54.4	53.5	54.1	58	56.3	53.2	51.9
19:45 to 20:00	52.7	53.6	55.5	53.5	55.4	54.7	53.4
20:00 to 20:15	52.4	52.7	54.8	55.2	55.7	53	53.7
20:15 to 20:30	53.2	53.1	59.7	54.8	54.6	53.5	54.3
20:30 to 20:45	52.2	52.6	54.8	54.3	56.4	53.9	52.9
20:45 to 21:00	53.2	54.7	53.8	55.6	54.6	53.5	50.6
21:00 to 21:15	51.4	53.3	53.2	54.5	54.5	56.1	53.4
21:15 to 21:30	49.3	54.4	53.2	52.7	54.6	52.9	52.2
21:30 to 21:45	56.8	50.4	51.5	53.3	52.9	52.7	50.7
21:45 to 22:00	53.3	50.6	52.4	52	52.7	52.9	51.1
22:00 to 22:15	50.8	50	48.5	53.1	51.3	50.3	50.2
22:15 to 22:30	44.4	47.2	51.1	49.8	54.2	52.1	48
22:30 to 22:45	48.2	44.7	47.4	49.7	54.1	51	50.7
22:45 to 23:00	44.3	48.1	48.9	50.9	53.6	52.3	47.6
23:00 to 23:15	43.8	48.9	49.6	46.9	53.5	50.9	51.9
23:15 to 23:30	46.8	40.2	47.6	49.9	49.2	49.9	49.8
23:30 to 23:45	44.5	48.7	50.1	55.5	50.1	52	46.6
23:45 to 00:00	45.6	43.5	46.5	46.4	50	49.8	45.4

003 Eastern section – NGARA3

003 - Eastern secti

	Mon	Tue
	29/06/2020	30/06/2020
00:00 to 00:15	44.4	42.8
00:15 to 00:30	47.3	44
00:30 to 00:45	47.8	40.9
00:45 to 01:00	46.6	43.4
01:00 to 01:15	46.2	45
01:15 to 01:30	47.1	45.6
01:30 to 01:45	50	42.9
01:45 to 02:00	42.5	43.1
02:00 to 02:15	44.8	45.4
02:15 to 02:30	42.6	45.3
02:30 to 02:45	41.3	42.2
02:45 to 03:00	43.5	42.6
03:00 to 03:15	42.6	45.9
03:15 to 03:30	44.3	42.4
03:30 to 03:45	44.5	43.2
03:45 to 04:00	48.1	45.6
04:00 to 04:15	46.3	46.9
04:15 to 04:30	45.1	47.5
04:30 to 04:45	53.3	52.2
04:45 to 05:00	50.5	50.8
05:00 to 05:15	53.1	51.7
05:15 to 05:30	50.5	50.9
05:30 to 05:45	54.2	54.7
05:45 to 06:00	54.7	54.8
06:00 to 06:15	55	61
06:15 to 06:30	56.9	55.9
06:30 to 06:45	57	59.5
06:45 to 07:00	59.5	60
07:00 to 07:15	59.4	60.9
07:15 to 07:30	60.5	59.4
07:30 to 07:45	62	60.1
07:45 to 08:00	62.1	61.2
08:00 to 08:15	68.9	65.4
0815 to 0830	Wind/Rain	63.3
08:30 to 08:45	Wind/Rain	64.3
08:45 to 09:00	71.9	67.4
09:00 to 09:15	72.5	63.2
09:15 to 09:30	69.4	63.6
09:30 to 09:45	64.7	61.7
09:45 to 10:00	65.2	61.3
10:00 to 10:15	Wind/Rain	61.7
10:15 to 10:30	59.8	60.2
10:30 to 10:45	Wind/Rain	60.4
10:45 to 11:00	Wind/Rain	59.2
11:00 to 11:15	Wind/Rain	61.9
11:15 to 11:30	Wind/Rain	60.4
11:30 to 11:45	Wind/Rain	60.8
11:45 to 12:00	70.5	59.9
12:00 to 12:15	67.1	59.8
12:15 to 12:30	65.7	60.6
12:30 to 12:45	64.9	61.4
12:45 to 13:00	Wind/Rain	60.4
13:00 to 13:15	63	61.9
13:15 to 13:30	Wind/Rain	Wind/Rain
13:30 to 13:45	Wind/Rain	Wind/Rain
13:45 to 14:00	Wind/Rain	63.1
14:00 to 14:15	Wind/Rain	59.8
14:15 to 14:30	Wind/Rain	61
14:30 to 14:45	Wind/Rain	61.1
14:45 to 15:00	Wind/Rain	61.4
15:00 to 15:15	Wind/Rain	64.1
15:15 to 15:30	Wind/Rain	61.6
15:30 to 15:45	Wind/Rain	61.7
15:45 to 16:00	Wind/Rain	62.5
16:00 to 16:15	Wind/Rain	61.5
16:15 to 16:30	Wind/Rain	62.5
16:30 to 16:45	59.9	59.8
16:45 to 17:00	Wind/Rain	60.7
17:00 to 17:15	Wind/Rain	59.9
17:15 to 17:30	Wind/Rain	59.6
17:30 to 17:45	58.8	59.6
17:45 to 18:00	58.5	59.2
18:00 to 18:15	58.9	58.1
18:15 to 18:30	56.7	57.9
18:30 to 18:45	56.8	58.4
18:45 to 19:00	55.8	56.6
19:00 to 19:15	55.3	55.5
19:15 to 19:30	53.8	56.1
19:30 to 19:45	55.7	54.6
19:45 to 20:00	54.4	57.1
20:00 to 20:15	54.5	53
20:15 to 20:30	53.3	54.9
20:30 to 20:45	52.2	54
20:45 to 21:00	56.1	54
21:00 to 21:15	56.1	54.6
21:15 to 21:30	52.2	52.7
21:30 to 21:45	52.9	64.9
21:45 to 22:00	49.1	51.5
22:00 to 22:15	52.5	50.8
22:15 to 22:30	50.2	49.6
22:30 to 22:45	51.1	49
22:45 to 23:00	48.5	48.5
23:00 to 23:15	47	47.5
23:15 to 23:30	45.9	49.6
23:30 to 23:45	47.1	47
23:45 to 00:00	45.5	45.8