

# Environmental Dust Assessment Report

Tweed Valley Hospital Project

Prepared for: Delta Group





**ADE**  
CONSULTING  
GROUP

Prepared for:

Delta Group

## **Environmental Dust Assessment Report**

### **Tweed Valley Hospital Project**

Version	Details	Date
v1.1f	Written by [REDACTED]	7 <sup>th</sup> February 2020

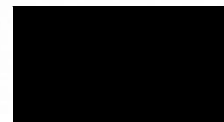
**Report No:**

DLT-01-Q1013 / EDM6 / v1.1f

**Date:**

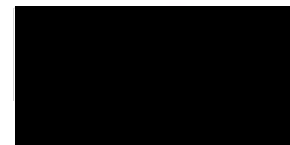
7<sup>th</sup> February 2020

**Written By:**



B. Env. Sci.  
Environmental Consultant

**Reviewed By:**



B. Sci. Hon. (Env.Sci.)  
Project Manager

This report is copyright. No part of this publication may be reproduced or transmitted in any form or by any means, electronic or mechanical, including photocopying without permission in writing from ADE

Consulting Group Pty Ltd.



**ENVIRONMENTAL DUST ASSESSMENT REPORT**  
**ADE Report No. DLT-01-Q1013 / EDM6 / v1.1f**

## **1 INTRODUCTION**

### **1.1 General**

ADE Consulting Group Pty Ltd (ADE) was commissioned by Delta Group (DLT) Pty Ltd to measure the levels of dust within the Tweed Valley Hospital Project, located at 771 Cudgen Road, Kingscliff NSW hereafter referred to as 'the Site'. At the time of the dust monitoring, Delta Group are continuing to conduct earthworks.

Real time dust monitoring was carried out to determine and quantify the levels of dust created during the days in which the contractors/employees are undertaking the earthworks.

**Table 1.** Summary of Site Information and Project Information.

<b>Site and Project Details</b>	
<b>Client:</b>	Delta Group
<b>ADE Project No.:</b>	DLT-01-Q1013
<b>Site Location:</b>	771 Cudgen Road, Kingscliff NSW
<b>Monitoring Time and Dates:</b>	Wednesday 1 <sup>st</sup> January – Friday 31 <sup>st</sup> January (continuous): <ul style="list-style-type: none"><li>- Day shift from 07:00 to 17:59</li><li>- Night Shift from 18:00 to 06:59</li></ul>
<b>Date of Report:</b>	07.02.2020
<b>Monitoring Parameters:</b>	Particulate Matter <10 micrometers (PM10); and Data recording frequency: 1 minute.
<b>Exposure Standard</b>	Australian Institute of Occupational Hygienists (AIOH) recommendation for PM10 Dust <b>5 mg/m<sup>3</sup></b> (expressed as 8-hour time weighted average)

### **1.2 Scope of Work**

The scope of work involved the following:

- Completion of a Safety, Health & Environment Work Method Statement prior to undertaking any works;
- Real time continuous monitoring of PM10 in seven locations along the eastern, southern and western boundaries of the Site; and
- Preparation of an Environmental Dust Assessment Report outlining the site data, conclusions and recommendations.

### 1.3 Whole Report

No one section or part of a section, of this report should be taken as giving an overall idea of this report. Each section must be read in conjunction with the whole of this report, including its appendices and attachments.

### 1.4 Previous Report

Refer to the previous report (DLT-01-Q1013 / EDM5 / v1 / v1f) for details from earlier monitoring periods.

### 1.5 Monitoring locations

The Site is located at 771 Cudgen Road, bounded by Tweed Coast Road to the West, Turncock Street to the East and Cudgen Road to the South at Kingscliff, NSW as per the Figure 1 below.

The DustTrak monitoring locations are indicated by the blue dots in Figure 1, all within the confines of the construction barriers in compliance with condition C29 of the consent.

Dust levels are recorded at these locations to determine the dust levels at the western, eastern and southern boundaries of the project during the alterations on site, and ensure the nearby sensitive receivers listed in the Lendlease Air Quality Management Plan remain undisturbed. Dust monitoring location 001 was installed on the 2<sup>nd</sup> of August 2019. Dust monitoring locations 002 & 003 were installed on the 31<sup>st</sup> of July 2019. Dust monitoring locations 004, 005, 006 & 007 were installed on the 16<sup>th</sup> of January 2020. All dust monitors have been operational 24 hours a day since their installation.

### 1.6 Exposure limits

ADE has adopted the recommended exposure standard for PM10 to be 5 mg/m<sup>3</sup> (8-hour time weighted average) as per the recommendation of the Australian Institute of Occupational Hygienists (AIOH) for works on-site. If this standard is exceeded, cease works immediately, and review controls and relevant practices listed in the Lendlease Air Quality Management Plan (2019). An action limit of 2.5 mg/m<sup>3</sup> (8-hour time weighted average) has been implemented to minimize the likelihood of an exceedance.

### 1.7 Bureau of Meteorology (BOM) Climate Data

Summary of climate data for Coolangatta has been included in Table 2 below.

**Table 2.** Summary of Climate Data at Coolangatta, QLD.

Date	Wind direction	Highest wind gusts (km/h)	Time of maximum wind gust	Minimum temperature (°C)	Maximum temperature (°C)	Rain (mm)
01/01/20	NNE	35	13:30	20.7	29.5	0.2
02/01/20	NNE	31	12:02	20.4	29.7	0
03/01/20	NE	31	13:58	19.3	29.9	0
04/01/20	NNE	41	12:41	20.4	29.9	0
05/01/20	N	43	12:02	21.9	29.2	0
06/01/20	SE	33	10:15	19.2	29.9	0

**Sydney Office:**  
ADE Consulting Group Pty Ltd  
Unit 6 / 7 Millennium Court  
Silverwater, NSW 2128

**Melbourne Office:**  
ADE Consulting Group Pty Ltd  
Unit 4 / 95 Salmon Street  
Port Melbourne, VIC 3207

**Newcastle Office:**  
ADE Consulting Group Pty Ltd  
Unit 9 / 103 Glenwood Drive  
Thornton, NSW 2322

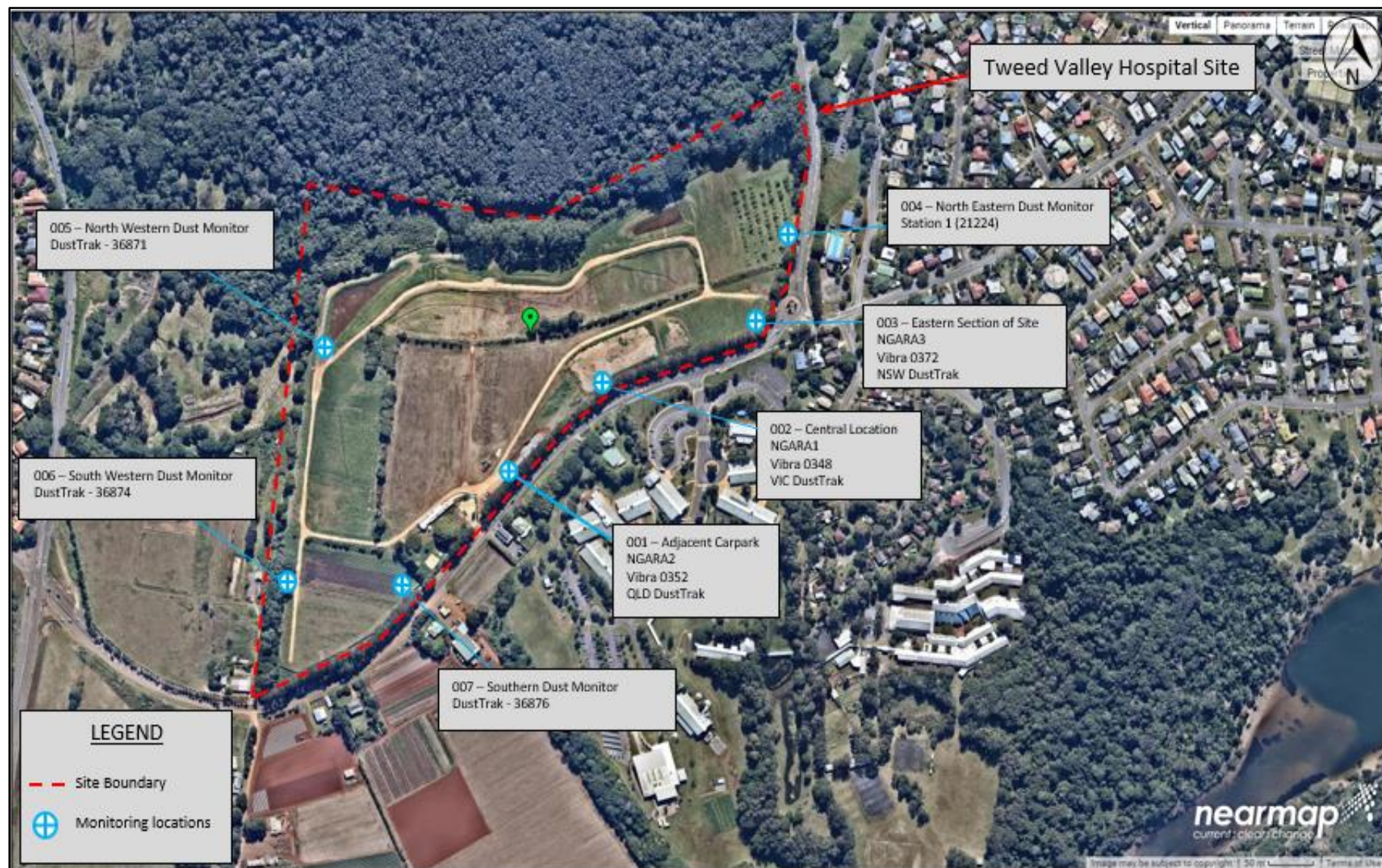
**Brisbane Office:**  
ADE Consulting Group Pty Ltd  
Unit 3 / 22 Palmer Place  
Murarrie QLD 4172

**Contact Us:**  
Site: [www.ADE.Group](http://www.ADE.Group)  
Email: [info@ade.group](mailto:info@ade.group)  
Phone: 1300 976 922

**Table 2.** Continued...

Date	Wind direction	Highest wind gusts (km/h)	Time of maximum wind gust	Minimum temperature (°C)	Maximum temperature (°C)	Rain (mm)
07/01/20	N	30	10:19	22.0	28.5	0
08/01/20	NNE	35	12:31	20.6	30.0	0
09/01/20	NNE	33	12:49	19.1	30.2	0
10/01/20	NNE	41	14:58	21.1	30.6	0
11/01/20	N	44	08:19	24.4	30.6	0
12/01/20	SW	50	13:15	21.0	25.6	20.4
13/01/20	S	46	14:17	19.8	27.7	0.2
14/01/20	S	39	15:13	21.4	29.8	0
15/01/20	ESE	28	10:06	21.1	28.5	2.8
16/01/20	NE	31	15:55	21.2	28.5	8.0
17/01/20	ESE	43	23:01	21.7	29.3	6.2
18/01/20	N	65	06:12	20.2	27.1	205.6
19/01/20	N	39	23:29	20.2	29.2	10.0
20/01/20	N	46	11:52	23.5	29.4	9.2
21/01/20	N	50	16:44	23.8	29.8	1.2
22/01/20	NNE	39	14:01	22.7	29.5	0.2
23/01/20	N	46	11:42	23.5	29.3	0
24/01/20	N	44	14:38	23.5	28.8	0
25/01/20	N	30	08:15	23.6	27.9	0
26/01/20	NE	30	13:15	22.2	28.8	1.8
27/01/20	NE	30	14:21	22.6	29.6	0.6
28/01/20	N	33	19:38	22.4	30.3	16.4
29/01/20	NNE	33	11:16	23.6	30.6	0.2
30/01/20				22.6		0
31/01/20	ENE	31	13:09		30.2	

\*Grey boxes indicate no data provided by BOM



**Figure 1.** Aerial photograph of the DLT works area at 771 Cudgen Road, Kingscliff NSW.

**Sydney Office:**  
ADE Consulting Group Pty Ltd  
Unit 6 / 7 Millennium Court  
Silverwater, NSW 2128

**Melbourne Office:**  
ADE Consulting Group Pty Ltd  
Unit 4 / 95 Salmon Street  
Port Melbourne, VIC 3207

**Newcastle Office:**  
ADE Consulting Group Pty Ltd  
Unit 9 / 103 Glenwood Drive  
Thornton, NSW 2322

**Brisbane Office:**  
ADE Consulting Group Pty Ltd  
Unit 3 / 22 Palmer Place  
Murarrie QLD 4172

**Contact Us:**  
Site: [www.ADE.Group](http://www.ADE.Group)  
Email: [info@ade.group](mailto:info@ade.group)  
Phone: 1300 976 922

## 2. SAMPLING METHODOLOGY

### 2.1 Air Monitoring Samples

The implementation of continuous dust monitoring using a light scattering instrument (Dust Trak™ DRX Aerosol Monitor) as a supplemented analysis technique for dust deposition and directional dust analysis techniques. This supplemental technique is used as a guide and first response to allow change to dust control measures to be implemented to avoid exceedances within deposition and directional dust analysis techniques.

The Dust Trak™ DRX continuous dust monitor was used to determine the concentration of the dust that has been created by the earthworks. Two (2) Dust Trak™ DRX continuous dust monitors were installed on the 31<sup>st</sup> July 2019, one (1) was installed on the 2<sup>nd</sup> August 2019 and an additional four (4) were installed on the 16<sup>th</sup> of January 2020.

### 2.2 Controls

As per Lendlease Air Quality Management Plan (2019):

*“Works must be undertaken in accordance with the Lendlease GMRs, the Project EHS Plan, this Sub Plan and the Lendlease Building WDC. These documents detail Lendlease’s approach and commitment to pro-active and responsible site management.*

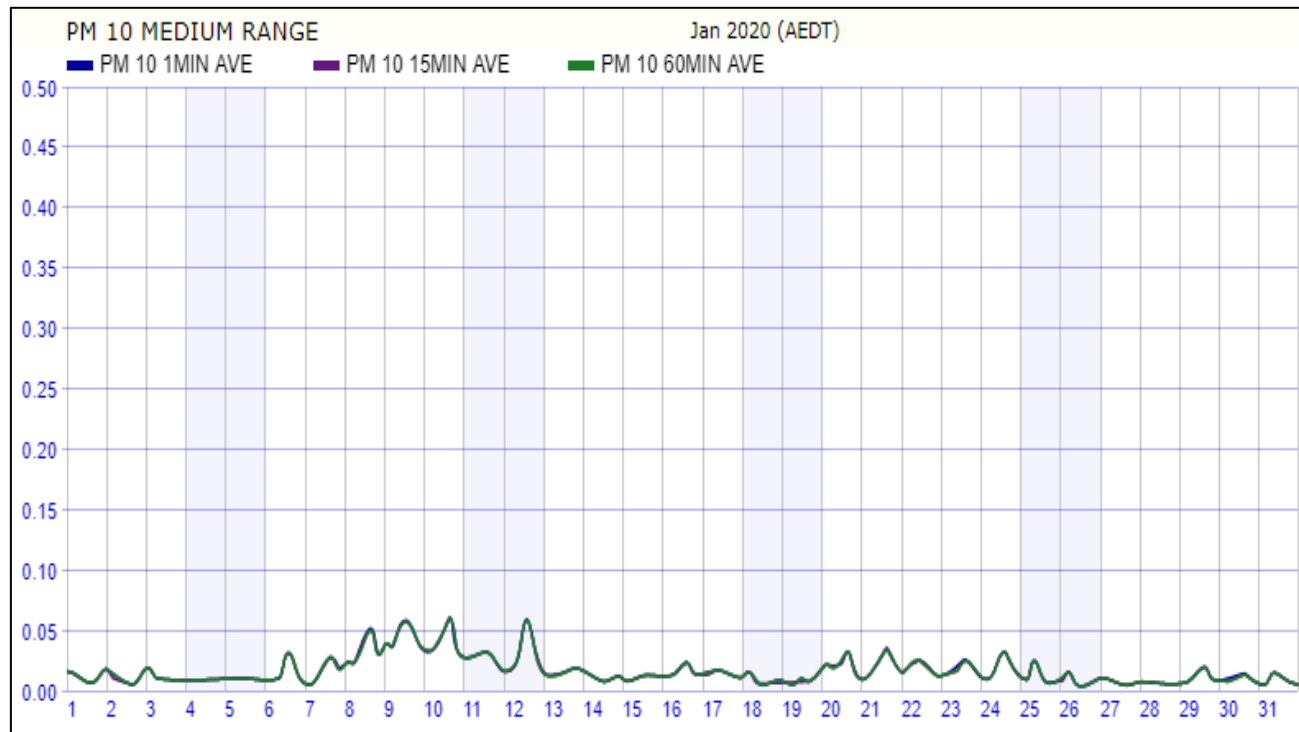
*The following site-specific controls have been implemented to prevent or minimise the impacts of construction related air emissions on the environment and community. These may include but are not limited to:*

- *Use of water cart to dampen work areas and exposed soils to prevent the emission of excessive dust;*
- *Installation of a wheel shaker grid and/or wash down facilities at the vehicle egress point;*
- *Ensuring trucks transporting materials to and from the site use covers to prevent windblown dust or spillage;*
- *Ensuring truck tailgate locking mechanisms are operational and in use;*
- *Periodic inspection of surrounding roads to ensure no construction contamination and initiation of road sweeping if required;*
- *Careful selection of materials for temporary road surfacing;*
- *Watercarts/water trucks will be in permanent use on site during excavation and civil works.*
- *Temporary stockpiles that are not required for imminent use will be stabilised with spray grass or appropriate fabric.*
- *Continuous monitoring of weather forecast to stop dust generating activities in case that high winds are expected.*
- *Before extended breaks (e.g., Easter, Christmas), areas will be treated with spray grass.*
- *Only those areas where immediate structures are to be build will be stripped. Areas will be stripped at the latest possible date to comply with the program.*
- *Construction haul roads and temporary carparking will maximise the use of permanent infrastructure. These roads/carparks will have a sacrificial seal to minimise dust generation.*
- *Subcontractors to maintain equipment / machinery to ensure exhaust emissions comply with relevant legislation and guidelines;*
- *All waste material to be sorted, collected and removed from site (for recycling where possible);*

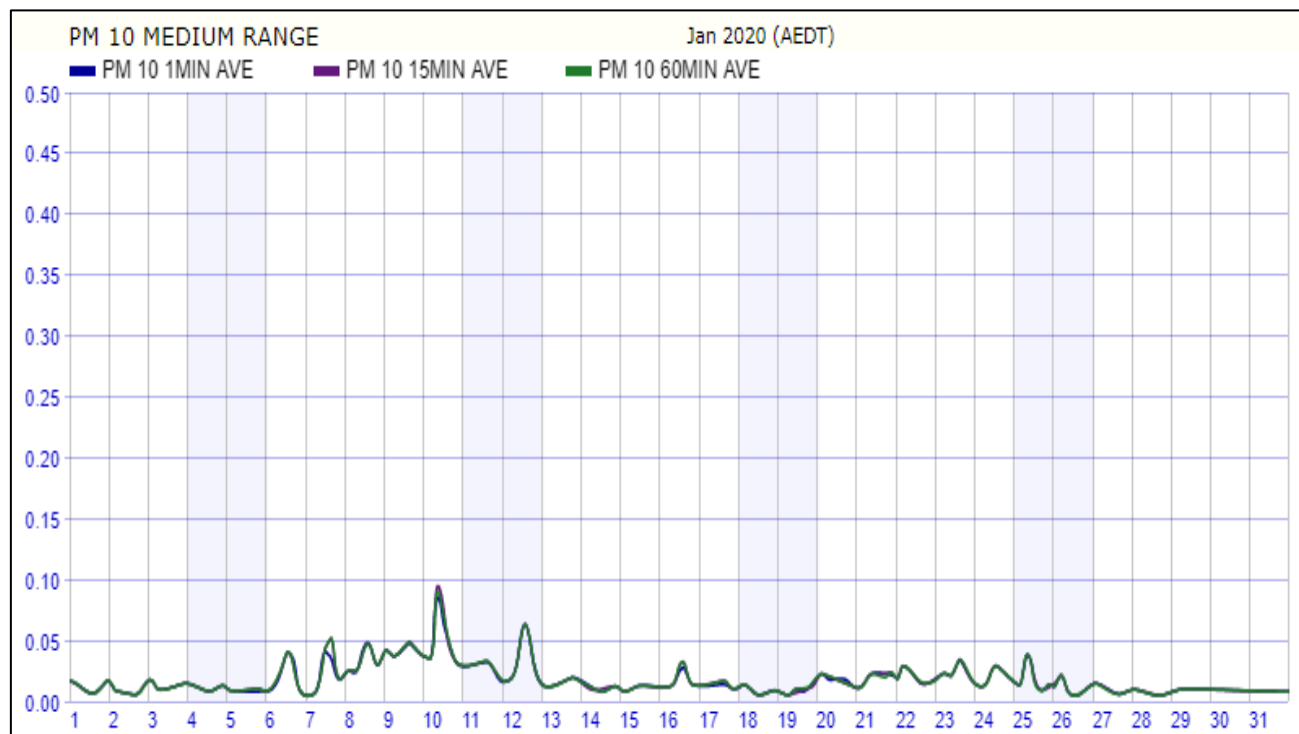
- *If rock crushing is assessed to be safe and feasible (i.e. cost effective and meets noise restrictions) the following management provisions will be in place:*
  - *rock crushers will have a water attachment for dust suppression at the source. The water is sprayed at the face of the crusher before, during and after the crushing.*
  - *Crushers will be located as far as practicable from Cudgen Road and immediate neighbours (i.e., on the north-west area of the site).*
  - *All crushed rock suitable for re-use will be recycled on site as fill, sediment control, pavements, hardstands, construction exits and pipe bedding materials.*
  - *Where possible, the oversize material from hard rock projects is also reused for vehicle entry shake downs and erosion control.*
- *Air quality monitoring;*
- *Dust screens and airlocks to be utilised with interior works;*
- *Controlling dust close to its source by installing sprays and sprinkler systems to prevent off-site migration; and*
- *Maintaining the site access to prevent dust generation and tracking off-site.*
- *No blasting will be performed as part of the proposed construction works program.”*

### 3. DATA

Note – All graphs below express dust levels as an hourly average.



**Figure 2.** Summary of PM10 from the real time monitoring at location 001 – Adjacent the carpark.



**Figure 3.** Summary of PM10 from the real time monitoring at location 002 – Central location.

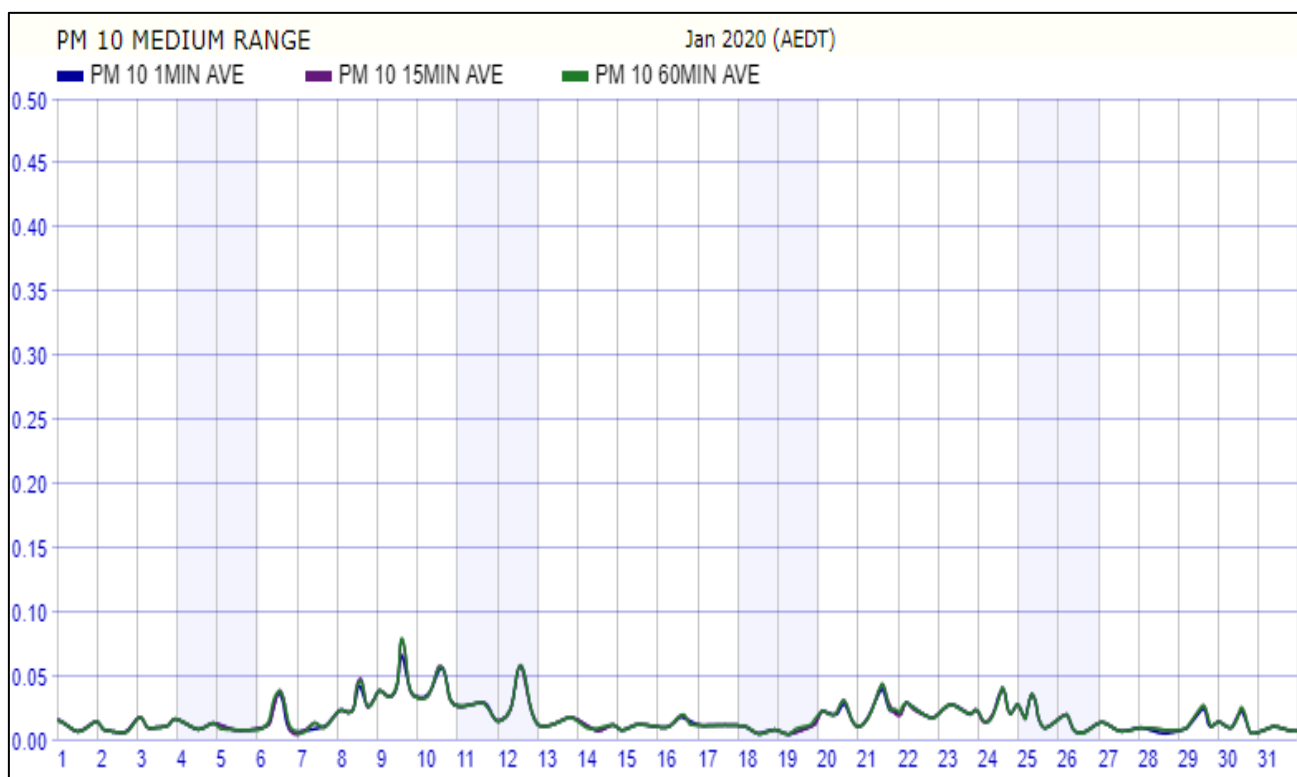
**Sydney Office:**  
ADE Consulting Group Pty Ltd  
Unit 6 / 7 Millennium Court  
Silverwater, NSW 2128

**Melbourne Office:**  
ADE Consulting Group Pty Ltd  
Unit 4 / 95 Salmon Street  
Port Melbourne, VIC 3207

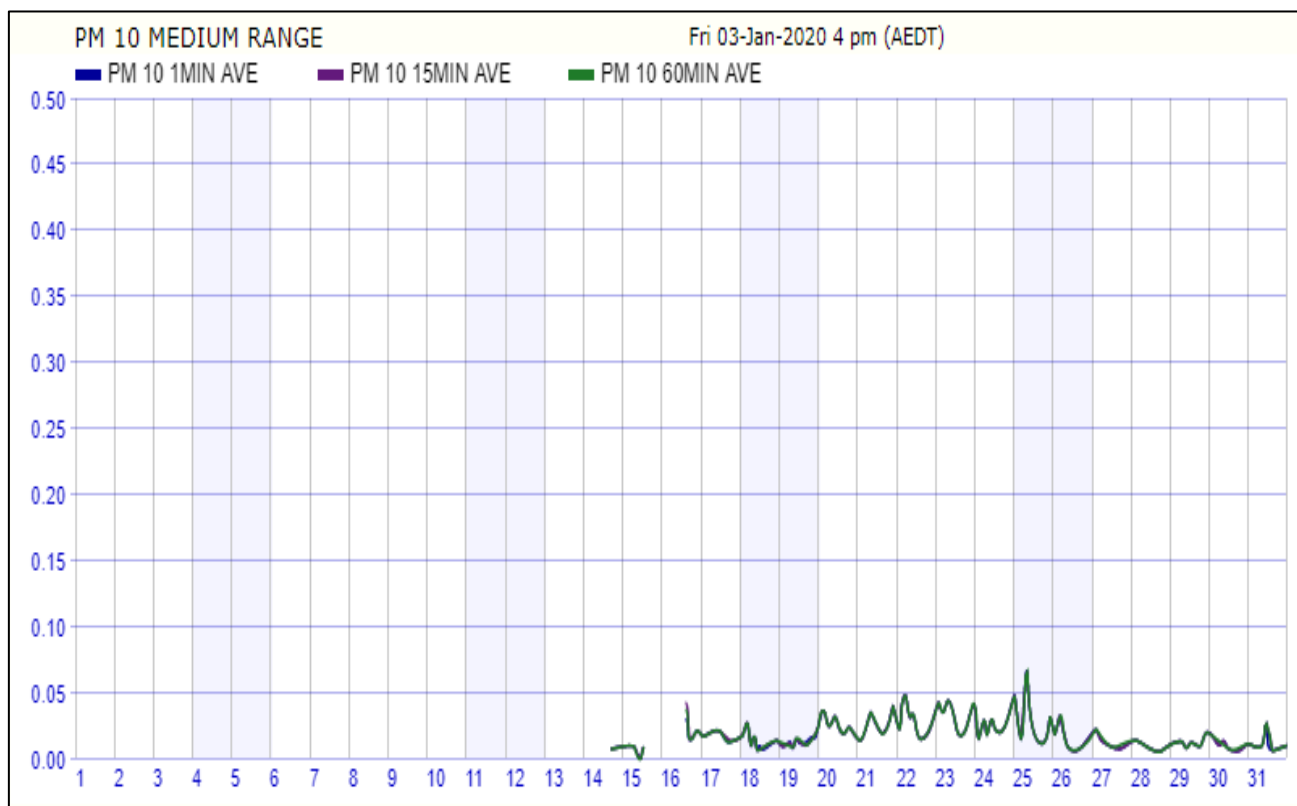
**Newcastle Office:**  
ADE Consulting Group Pty Ltd  
Unit 9 / 103 Glenwood Drive  
Thornton, NSW 2322

**Brisbane Office:**  
ADE Consulting Group Pty Ltd  
Unit 3 / 22 Palmer Place  
Murarrie QLD 4172

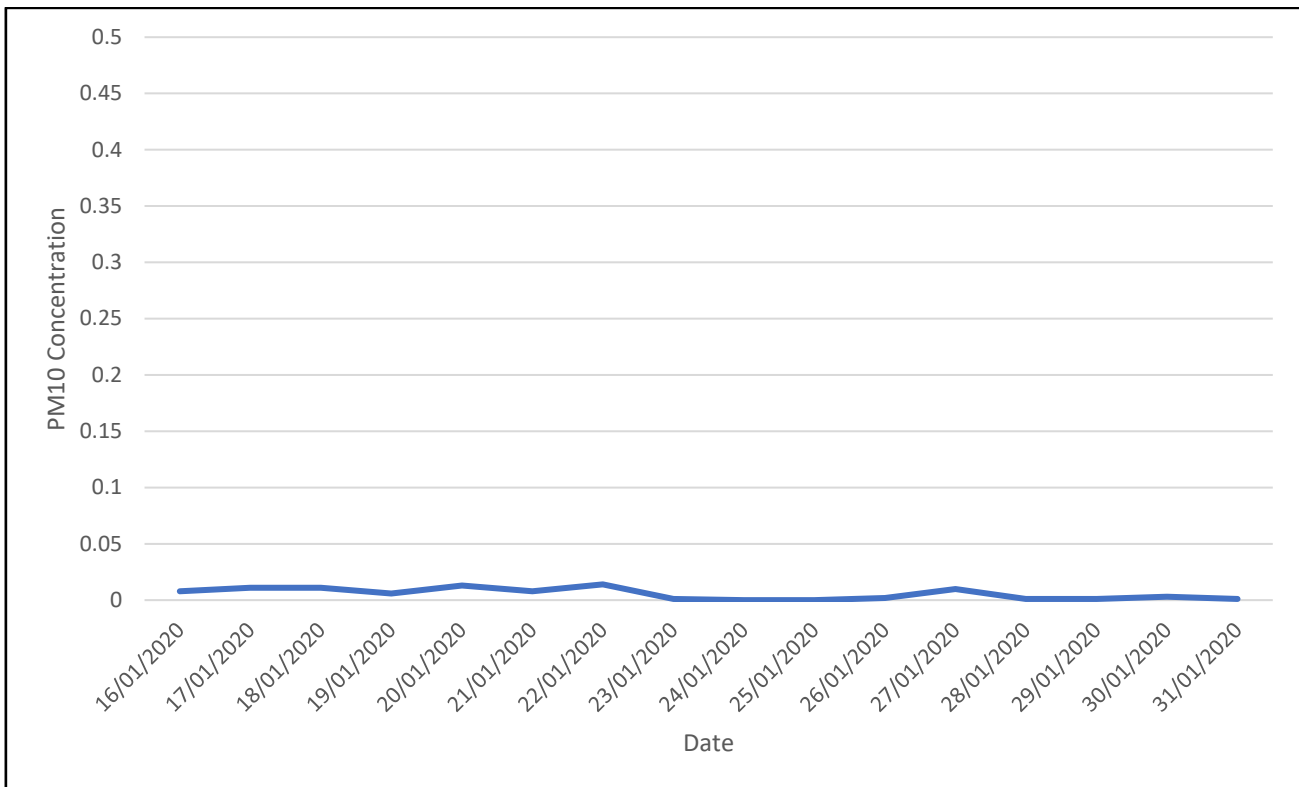
**Contact Us:**  
Site: [www.ADE.Group](http://www.ADE.Group)  
Email: [info@ade.group](mailto:info@ade.group)  
Phone: 1300 976 922



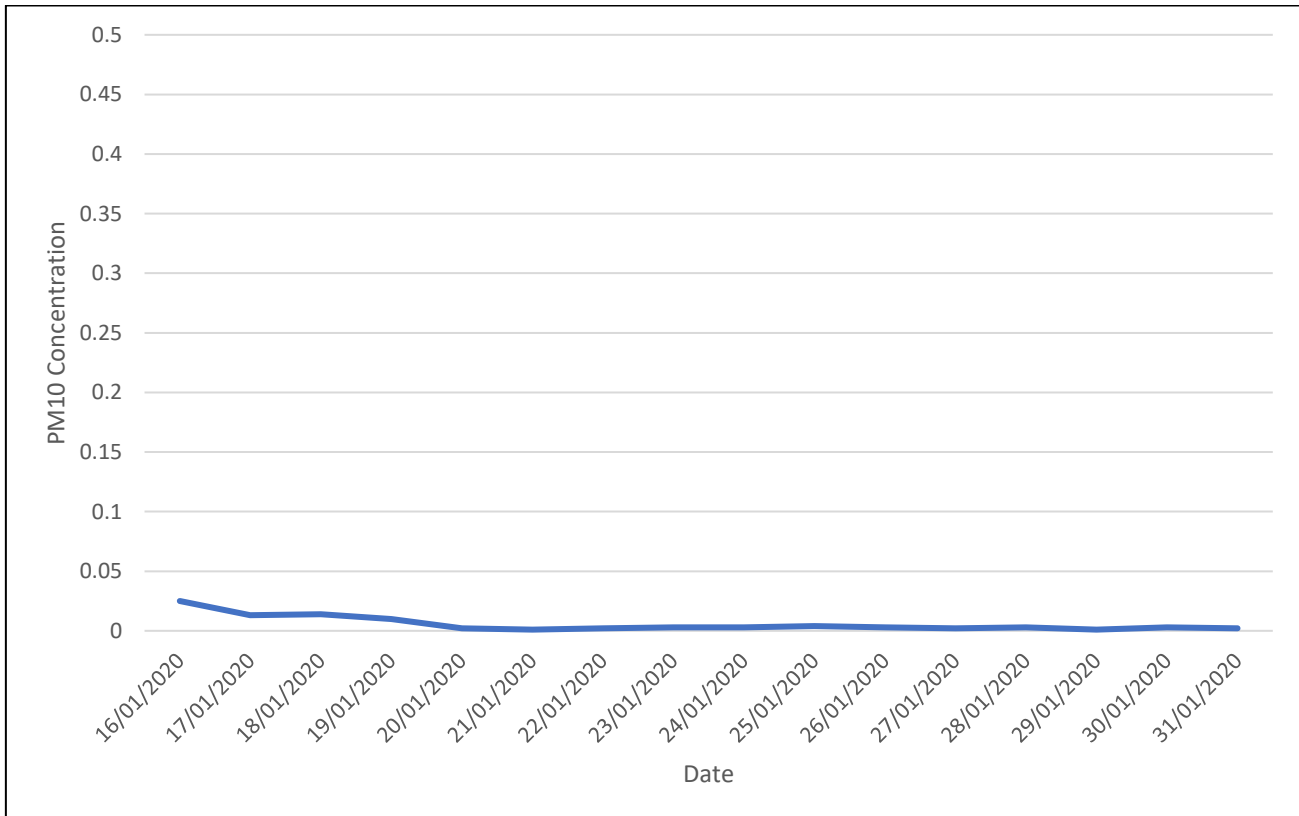
**Figure 4.** Summary of PM10 from the real time monitoring at location 003 – Eastern end of site.



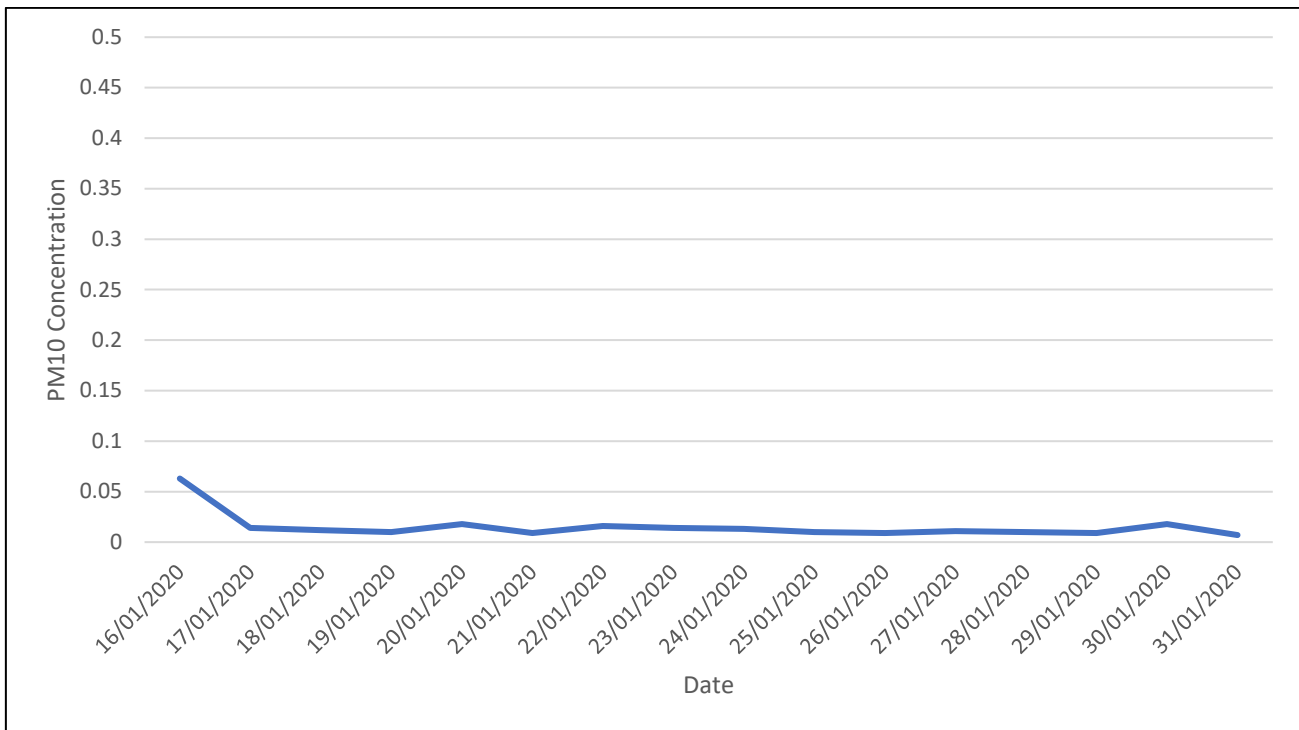
**Figure 5.** Summary of PM10 from the real time monitoring at location 004 – North Eastern Dust Monitor.



**Figure 6.** Summary of PM10 from the real time monitoring at location 005 – North Western Dust Monitor.



**Figure 7.** Summary of PM10 from the real time monitoring at location 006 – South Western Dust Monitor.



**Figure 8.** Summary of PM10 from the real time monitoring at location 007 – Southern Dust Monitor.

## 4. CONCLUSIONS

The peak dust concentration of 0.359mg/m<sup>3</sup> recorded at monitoring location 001 occurred over a one-minute period on the 9<sup>th</sup> of January at 11:01am.

The peak dust concentration of 5.95mg/m<sup>3</sup> recorded at monitoring location 002 occurred over a one-minute period on the 10<sup>th</sup> of January at 07:28am. ADE was advised that Delta Group was cutting grass in close vicinity to the monitor.

The peak dust concentration of 3.036 mg/m<sup>3</sup> recorded at monitoring location 003 occurred over a one-minute period on the 9<sup>th</sup> of January at 14:39pm. ADE was advised that C&D Excavations was loading mulch with an excavator near the monitor

The peak dust concentration of 0.149 mg/m<sup>3</sup> recorded at monitoring location 004 occurred over a one-minute period on the 16<sup>th</sup> of January at 14:22pm.

The peak dust concentration of 0.047 mg/m<sup>3</sup> recorded at monitoring location 005 occurred over a one-minute period on the 18<sup>th</sup> of January at 06:40am.

The peak dust concentration of 0.059 mg/m<sup>3</sup> recorded at monitoring location 006 occurred over a one-minute period on the 17<sup>th</sup> of January at 09:40am.

The peak dust concentration of 0.223 mg/m<sup>3</sup> recorded at monitoring location 007 occurred over a one-minute period on the 24<sup>th</sup> of January at 16:10pm.

As the above-mentioned max concentrations were over a period of <1 hour they are not shown clearly in the monthly graphs (refer to section 3. Data). As per the AIOH position paper Dust not otherwise specified (Dust NOS) and Occupational Health Issues, dust 'trigger' values are expressed as an 8-hour time weighted average.

As such dust concentrations across all monitoring location remained below the action limit of 2.5 mg/m<sup>3</sup> (refer to section 3. Data).

## 5. RECOMMENDATIONS

Ensure adequate dust control measures are being implemented as per the Lendlease Air Quality Management Plan (2018) and continued monitoring of PM10 for the duration of the project. If the action limit of 2.5 mg/m<sup>3</sup> (8-hour time weighted average) is exceeded, cease works and review and implement additional dust prevention techniques.

## 6. LIMITATIONS

This report has been prepared for use by the client who has commissioned the works in accordance with the project brief only and has been based on information provided by the client. The advice herein relates only to this project and all results, conclusions and recommendations made should be reviewed by a competent person with experience in environmental investigations, before being used for any other purpose. ADE Consulting Group Pty Ltd accepts no liability for use or interpretation by any person or body other than the client who commissioned the works. This report should not be reproduced or amended in any way without prior approval by the client or ADE and should not be relied upon by any other party, who should make their own independent enquiries.

ADE's professional opinions are based upon its professional judgment, experience, training and results from analytical data. In some cases, further testing and analysis may be required, thus producing different results and / or opinions. ADE has limited investigation to the scope agreed upon with its client.

ADE has used a degree of care and skill ordinarily exercised in similar investigations by a reputable member of the Environmental Industry within Australia. No other warranty, expressed or implied, is made or intended.

## 7. REFERENCES

- AIOH Position Paper, Dust not otherwise specified (Dust NOS) AND Occupational Health Issues, published by the Australian Institute of Occupational Hygienists (AIOH), May 2016.
- Lendlease Building Pty Ltd Tweed Valley Hospital – Management Plan – Air Quality, dated 04/02/2019.